

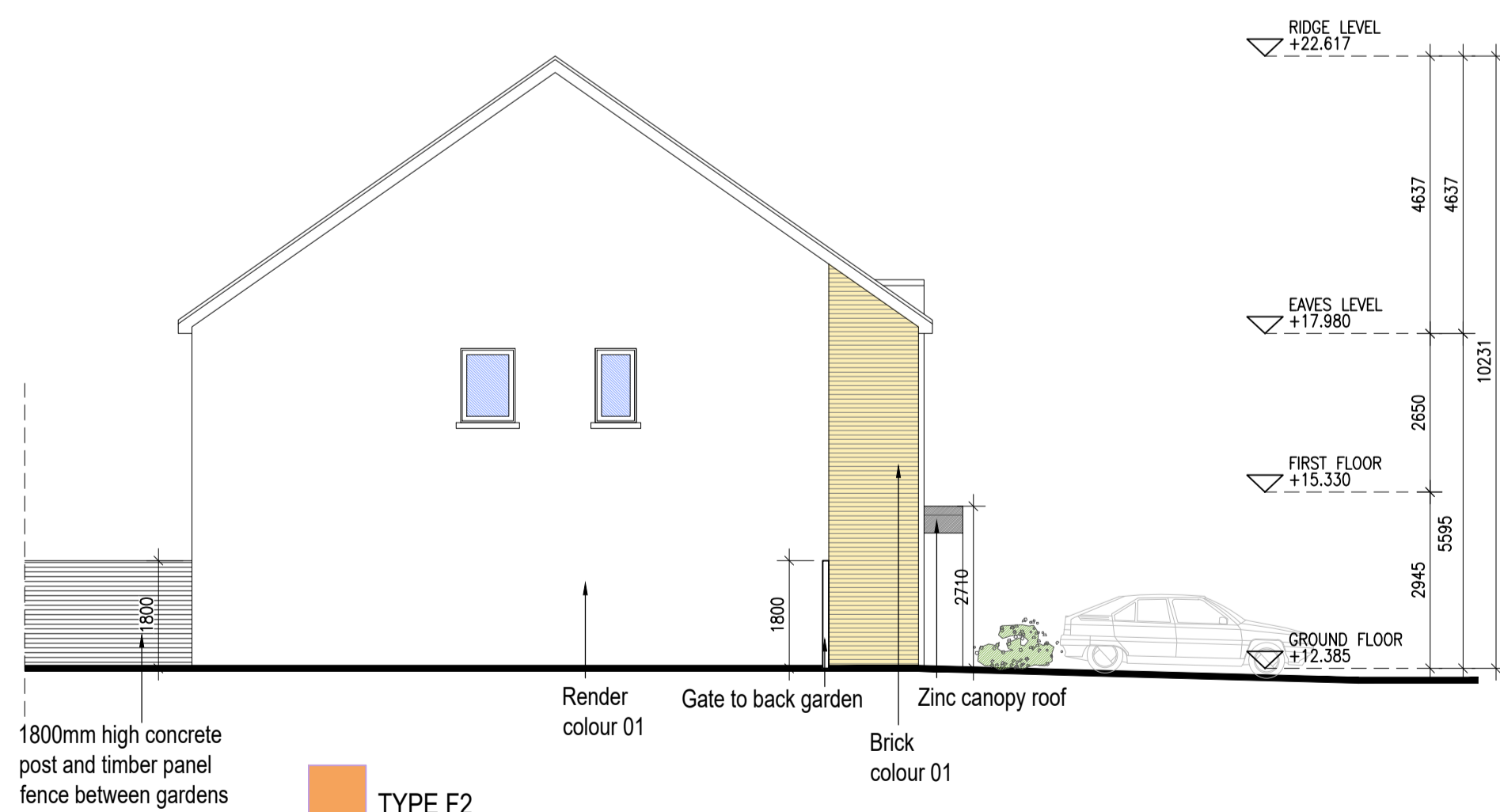


Render colour 01    Brick colour 01    Bins storage - Brick colour 01 [See drawing 6158B-P-202]    Bins storage - Brick colour 02 [See drawing 6158B-P-202]    Brick colour 01    Bins storage - Brick colour 01 [See drawing 6158B-P-202]    Brick colour 01    Render colour 01

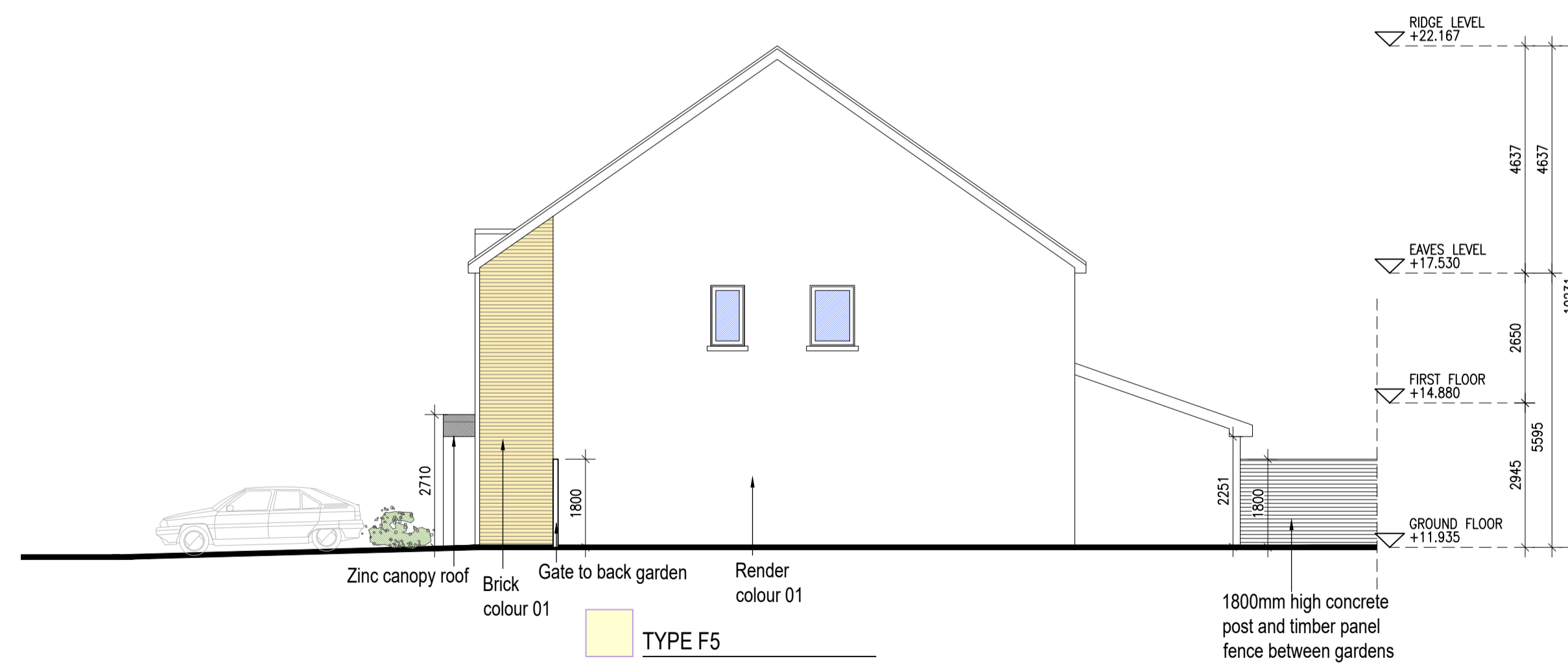
01 Type F5,F4,F1,F2 - Front Elevation Central  
1:100@A1 4 BED HOUSE



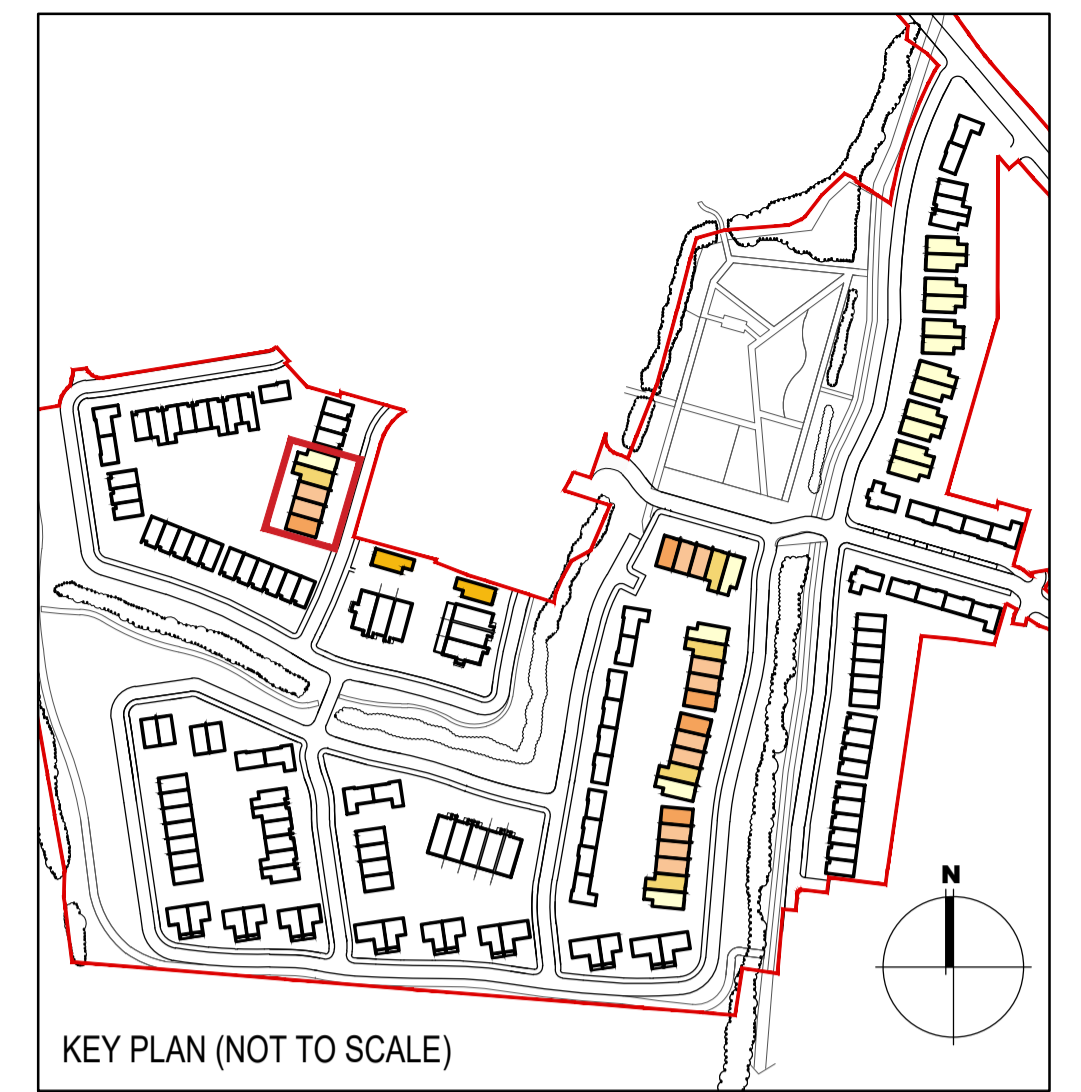
02 Type F5,F4,F1,F2 - Rear Elevation Central  
1:100@A1 4 BED HOUSE



03 Type F2 - Side Elevation Central  
1:100@A1 4 BED HOUSE



04 Type F5 - Side Elevation Central  
1:100@A1 4 BED HOUSE



KEY PLAN (NOT TO SCALE)

EXTERNAL FINISHES

- WALLS: PAINTED SAND / CEMENT RENDER OR PROPRIETARY PRECOLOURED RENDER FINISH  
SELECTED BRICKWORK WHERE INDICATED ON DRAWINGS
- WINDOWS: SELECTED PROPRIETARY DOUBLE / TRIPLE GLAZED WINDOW SYSTEM WITH FRAMES TO APPROVED COLOUR  
OBSCURED GLAZING TO BATHROOMS AND EN-SUITES.
- DOORS: SELECTED PROPRIETARY DOORS AND GLAZED SIDE SCREENS TO APPROVED COLOUR.
- RAINWATER GOODS: uPVC OR POWDER COATED METAL GUTTERS AND RAINWATER PIPES TO SELECTED COLOUR.
- MAIN ROOF: CONCRETE ROOF TILES IN SELECTED COLOUR.
- LOW LEVEL PROJECTION: ZINC CANOPY ROOF TO REAR OF UNITS
- OTHER ITEMS: uPVC OR POWDER COATED METAL FASCIAS, SOFFITS AND BARGE BOARDS  
PAINTED MILDSTEEL RAILINGS AND BALUSTRADES

HOUSES TYPES			Numbers of units
Type A1/A2/A3	3 bed [ 2st. ]	108.6 sqm	32
Type A4/A5/A6	3 bed [ 2st. ]	117.6 sqm	11
Type B1/B2/B3	3 bed [ 2st. ]	110.6 sqm	22
Type C1	3 bed [ 2st. ]	118 sqm	9
Type C2	3 bed [ 2st. ]	117.4 sqm	8
Type C3	3 bed [ 2st. ]	118.6 sqm	1
Type D1	4 bed [ 2st. ]	141 sqm	9
Type D2	4 bed [ 2st. ]	142 sqm	2
Type F1	4 bed [ 2st. ]	134.4 sqm	11
Type F2	4 bed [ 2st. ]	135.6 sqm	5
Type F3	4 bed [ 2st. ]	146.5 sqm	2
Type F4	4 bed [ 2st. ]	146.4 sqm	5
Type F5	4 bed [ 2st. ]	147.8 sqm	17
Type G	3 bed [ 1.5st. ]	114 sqm	11
Type H	4 bed [ 1.5st. ]	147 sqm	5
DUPLEXES			
Type J1/J2	2 bed Apart. [ 1st. ]	78.5 sqm	9
Type K1/K2	3bed Duplex [ 2st. ]	114.4 sqm	9
Type J3	2 bed Apart. [ 1st. ]	83.5 sqm	2
Type K3	3bed Duplex [ 2st. ]	114.4 sqm	2
Total Residential Units			172

**REFER TO LANDSCAPE ARCHITECT'S DRAWINGS FOR ALL LANDSCAPING DETAILS INCLUDING BOUNDARY TREATMENTS**

**HOUSE TYPE F1,F2,F4,F5 - CENTRAL**

Notes	Issue Status	No.	Date	Revision	Initials
1. Copyright Reserved	Progress	01	26.11.2021	SHD PLANNING APPLICATION TO ABP	RT
2. Work to signed dimensions only. Do not scale drawing	Planning Application				
3. The contractor is responsible for checking all levels and dimensions on site and shall refer all discrepancies to the Architect	Fire Cert				
4. Where appropriate, for details of r.c. structure, or mechanical and electrical details, see Engineers drawings	Disability Cert				
5. Proprietary items shall be fixed in strict accordance with manufacturers instructions.	Tender				
6. Sizes of proprietary items shall be checked with manufacturer.	Construction				
7. The contractor shall be responsible for the coordination of structure, finishes and services.	As Built				

Project	Portmarnock South Phase 1D Quintain Developments Ireland Limited
Drawing Title	House Type F1,F2,F4,F5 - Elevations - Central
Drawing No	6158B-P-077
Scale	1:100@A1
Rev	01
Drawn	RT
Date	26.11.2021

6-7 HARDCOURT TERRACE, DUBLIN 2, IRELAND  
1-353-1-6782400 1-353-1-678 7395  
www.bkd.ie

**bkdarchitects**  
BURKE-KENNEDY DOYLE