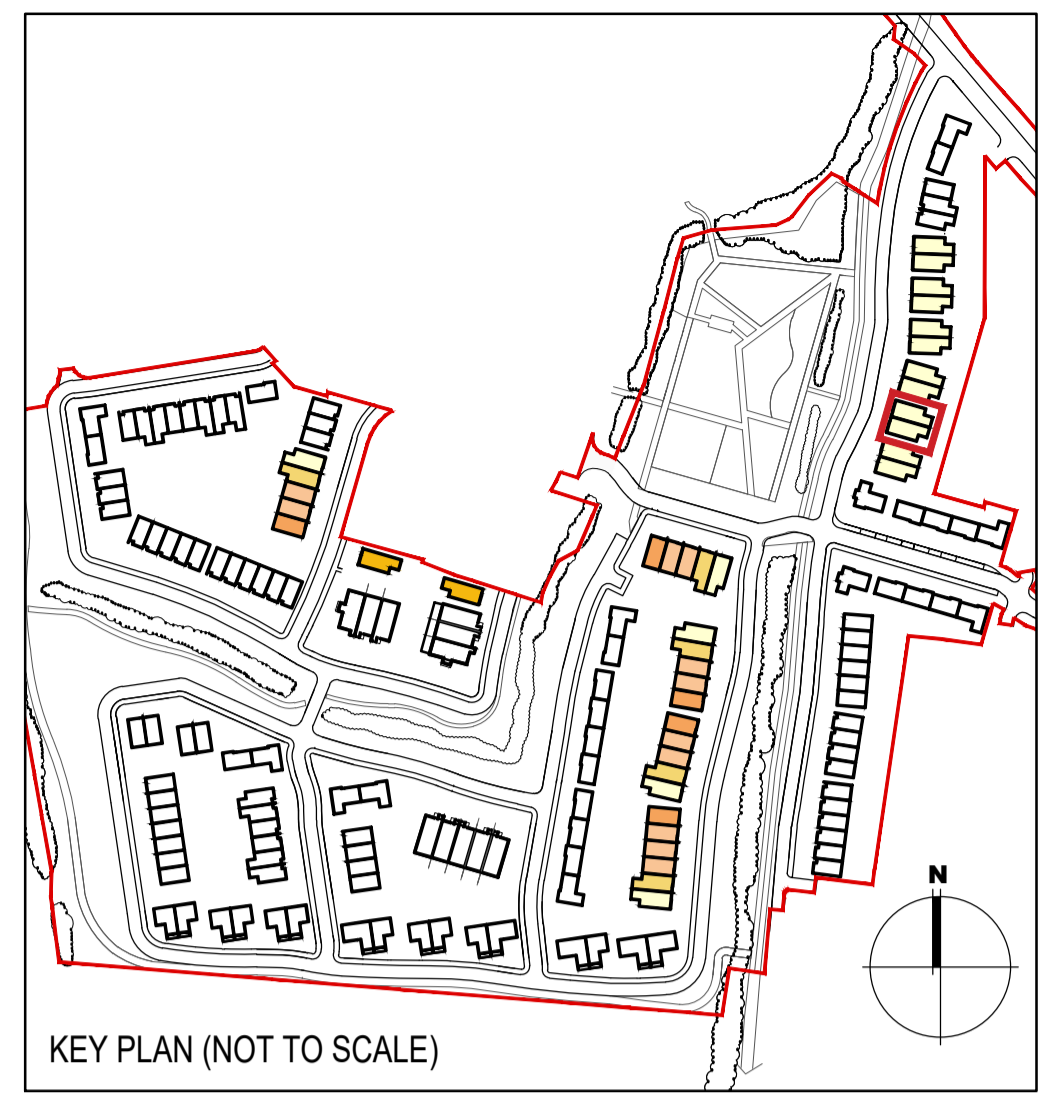
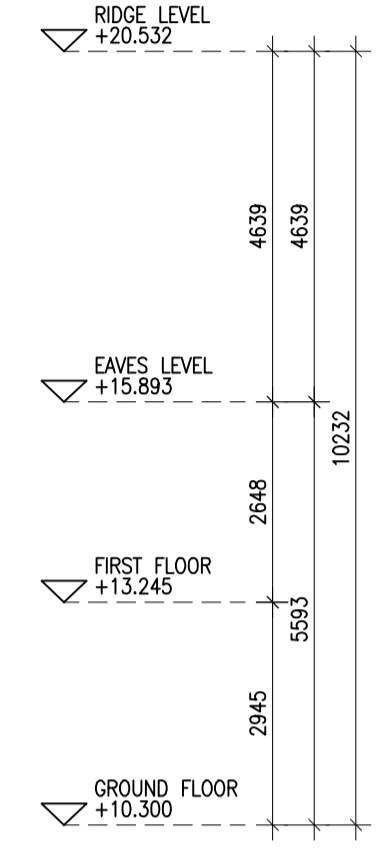


TYPE F5

HOUSE TYPE F5
 Ground floor area 80.0m²
 First floor area 67.8m²
 Total Floor Area (4-bed unit): 147.8m²



04 Type F5 - Section - Maynetown
 1:100@A1 4 BED HOUSE



EXTERNAL FINISHES

WALLS: PAINTED SAND / CEMENT RENDER OR PROPRIETARY PRECOLOURED RENDER FINISH
 SELECTED BRICKWORK WHERE INDICATED ON DRAWINGS

WINDOWS: SELECTED PROPRIETARY DOUBLE / TRIPLE GLAZED WINDOW SYSTEM WITH FRAMES TO APPROVED COLOUR
 OBSCURED GLAZING TO BATHROOMS AND EN-SUITES.

DOORS: SELECTED PROPRIETARY DOORS AND GLAZED SIDE SCREENS TO APPROVED COLOUR.

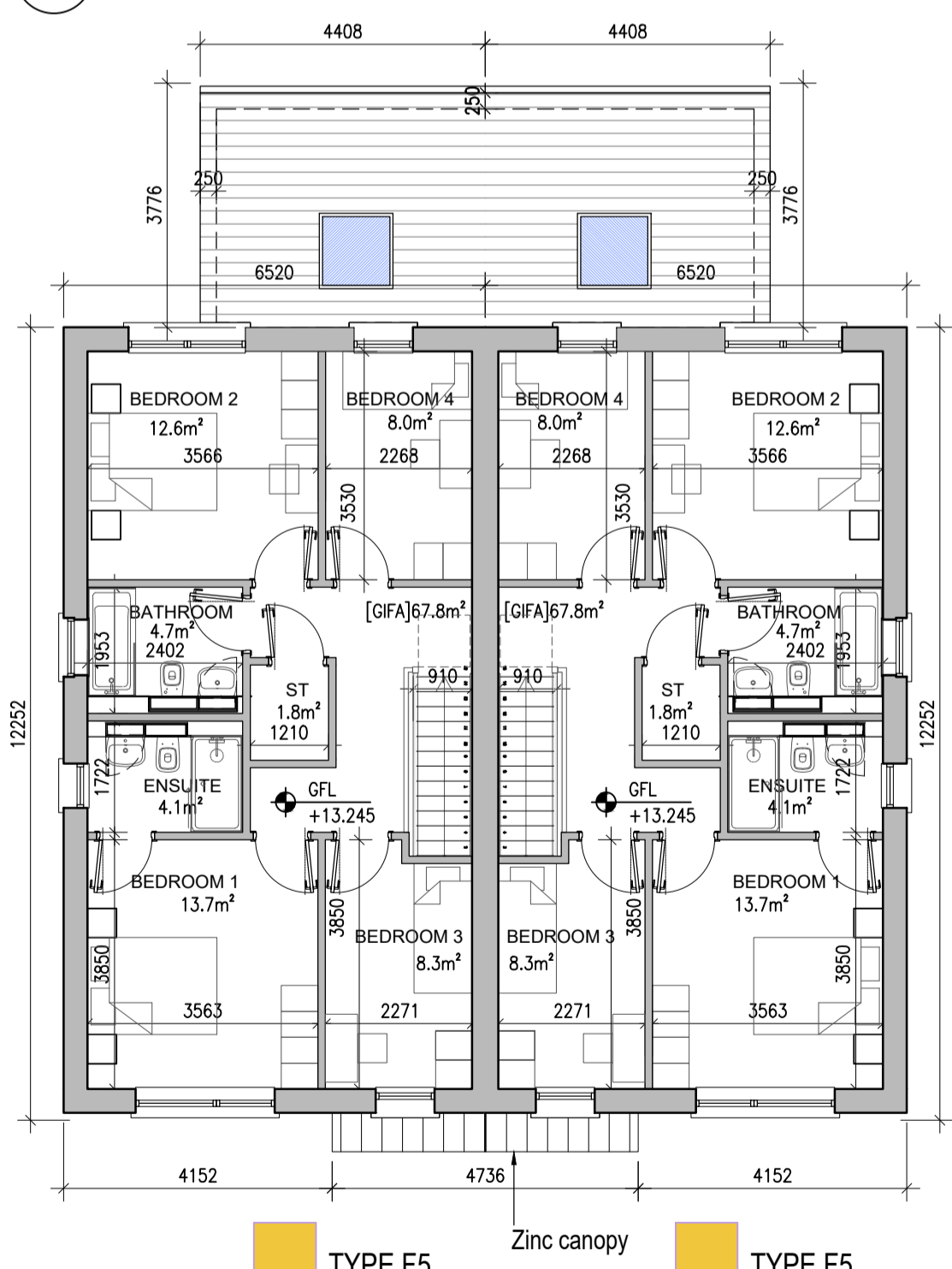
RAINWATER GOODS: uPVC OR POWDER COATED METAL GUTTERS AND RAINWATER PIPES TO SELECTED COLOUR.

MAIN ROOF: CONCRETE ROOF TILES IN SELECTED COLOUR.

LOW LEVEL PROJECTION: ZINC CANOPY ROOF TO REAR OF UNITS

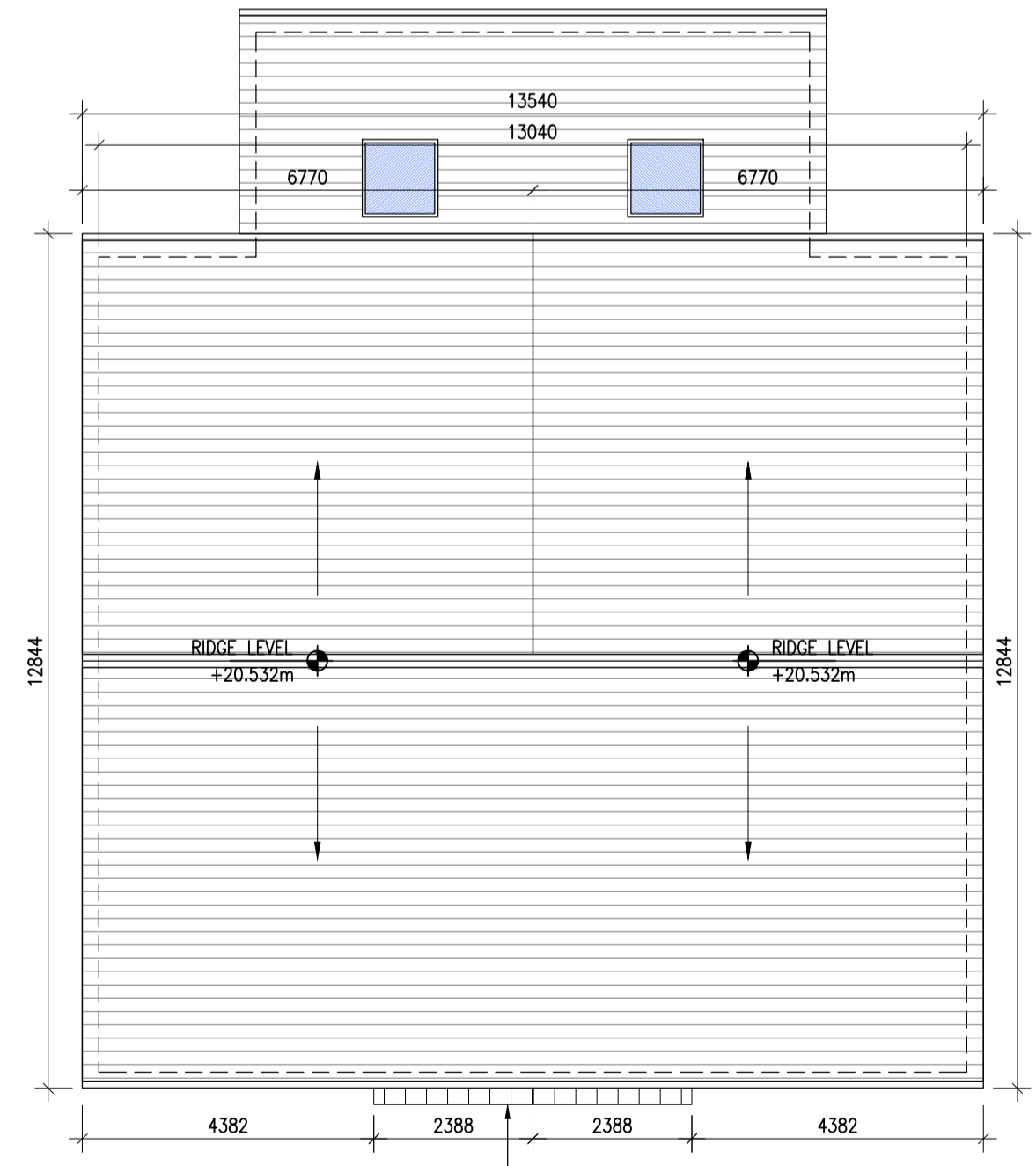
OTHER ITEMS: uPVC OR POWDER COATED METAL FASCIAS, SOFFITS AND BARGE BOARDS
 PAINTED MILDSTEEL RAILINGS AND BALUSTRADES

01 Type F5 - Ground Floor Plan - Maynetown
 1:100@A1 4 BED HOUSE



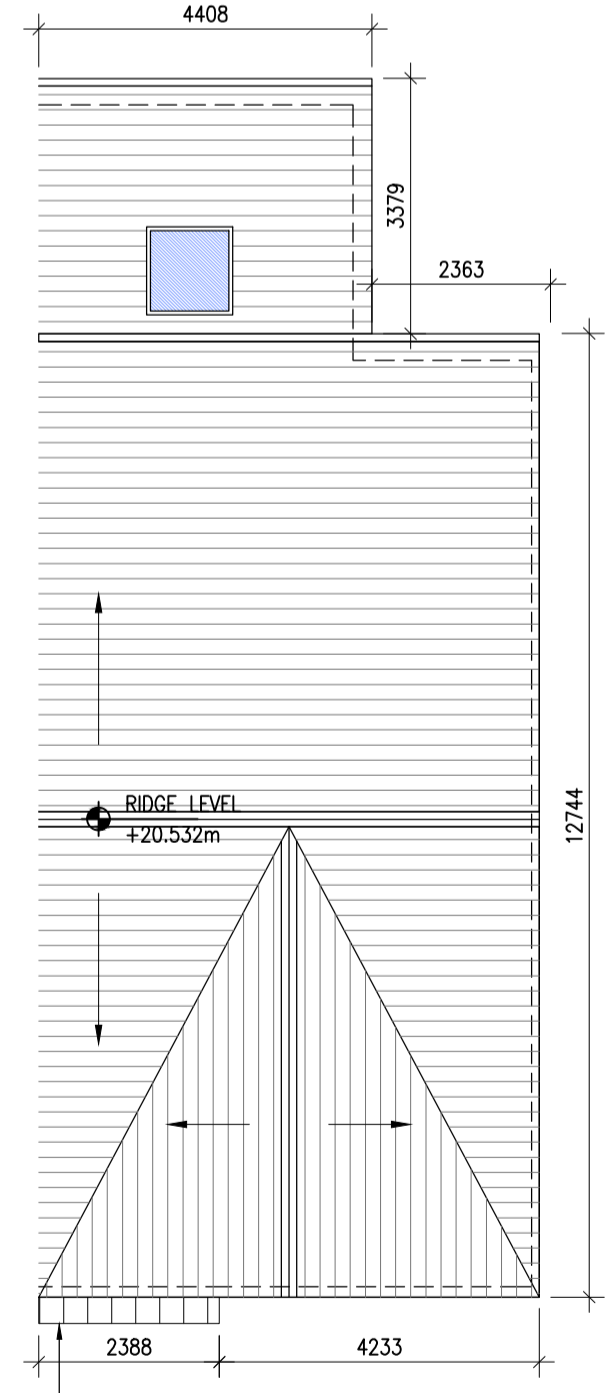
TYPE F5

02 Type F5 - First Floor Plan - Maynetown
 1:100@A1 4 BED HOUSE



TYPE F5

03 Type F5 - Roof Level - Maynetown
 1:100@A1 4 BED HOUSE



TYPE F5

03 Type F5 - Roof Level - [Maynetown] V2
 1:100@A1 4 BED HOUSE

HOUSES TYPES		Numbers of units	
Type A1/A2/A3	3 bed [2st.] 108.6 sqm	32	
Type A4/A5/A6	3 bed [2st.] 117.6 sqm	11	
Type B1/B2/B3	3 bed [2st.] 110.6 sqm	22	
Type C1	3 bed [2st.] 118 sqm	9	
Type C2	3 bed [2st.] 117.4 sqm	8	
Type C3	3 bed [2st.] 118.6 sqm	1	
Type D1	4 bed [2st.] 141 sqm	9	
Type D2	4 bed [2st.] 142 sqm	2	
Type F1	4 bed [2st.] 134.4 sqm	11	
Type F2	4 bed [2st.] 135.6 sqm	5	
Type F3	4 bed [2st.] 146.5 sqm	2	
Type F4	4 bed [2st.] 146.4 sqm	5	
Type F5	4 bed [2st.] 147.8 sqm	17	
Type G	3 bed [1.5st.] 114 sqm	11	
Type H	4 bed [1.5st.] 147 sqm	5	
DUPLEXES			
Type J1/J2	2 bed Apart. [1st.] 78.5 sqm	9	
Type K1/K2	3bed Duplex [2st.] 114.4 sqm	9	
Type J3	2 bed Apart. [1st.] 83.5 sqm	2	
Type K3	3bed Duplex [2st.] 114.4 sqm	2	
Total Residential Units		172	

REFER TO LANDSCAPE ARCHITECT'S DRAWINGS FOR ALL LANDSCAPING DETAILS INCLUDING BOUNDARY TREATMENTS

HOUSE TYPE F5 - MAYNETOWN

Notes	Issue Status	No.	Date	Revision	Initials
1. Copyright Reserved	Progress	01	26.11.2021	SHD - PLANNING APPLICATION TO ABP	RT
2. Work to signed dimensions only. Do not scale drawing	Planning Application				
3. The contractor is responsible for checking all levels and dimensions on site and shall refer all discrepancies to the Architect	Fire Cert				
4. Where appropriate, for details of r.c. structure, or mechanical and electrical details, see Engineers drawings	Disability Cert				
5. Proprietary items shall be fixed in strict accordance with manufacturers instructions.	Tender				
6. Sizes of proprietary items shall be checked with manufacturer.	Construction				
7. The contractor shall be responsible for the coordination of structure, finishes and services.	As Built				

Project	Portmarnock South Phase 1D Quintain Developments Ireland Limited	6-7 HARICOURT TERRACE, DUBLIN 2, IRELAND T: +353-1-6182400 F: +353-1-6767365 www.bkd.ie
Drawing Title	House Type F5 - Plans, Section - Maynetown	
Drawing No	6158B-P-079	
Scale	1:100@A1	Rev 01
Drawn	RT	Date 26.11.2021

Standard 6158B-P-079-Type F5 - Plans, Section - Maynetown.dwg 26/11/2021 17:07:59