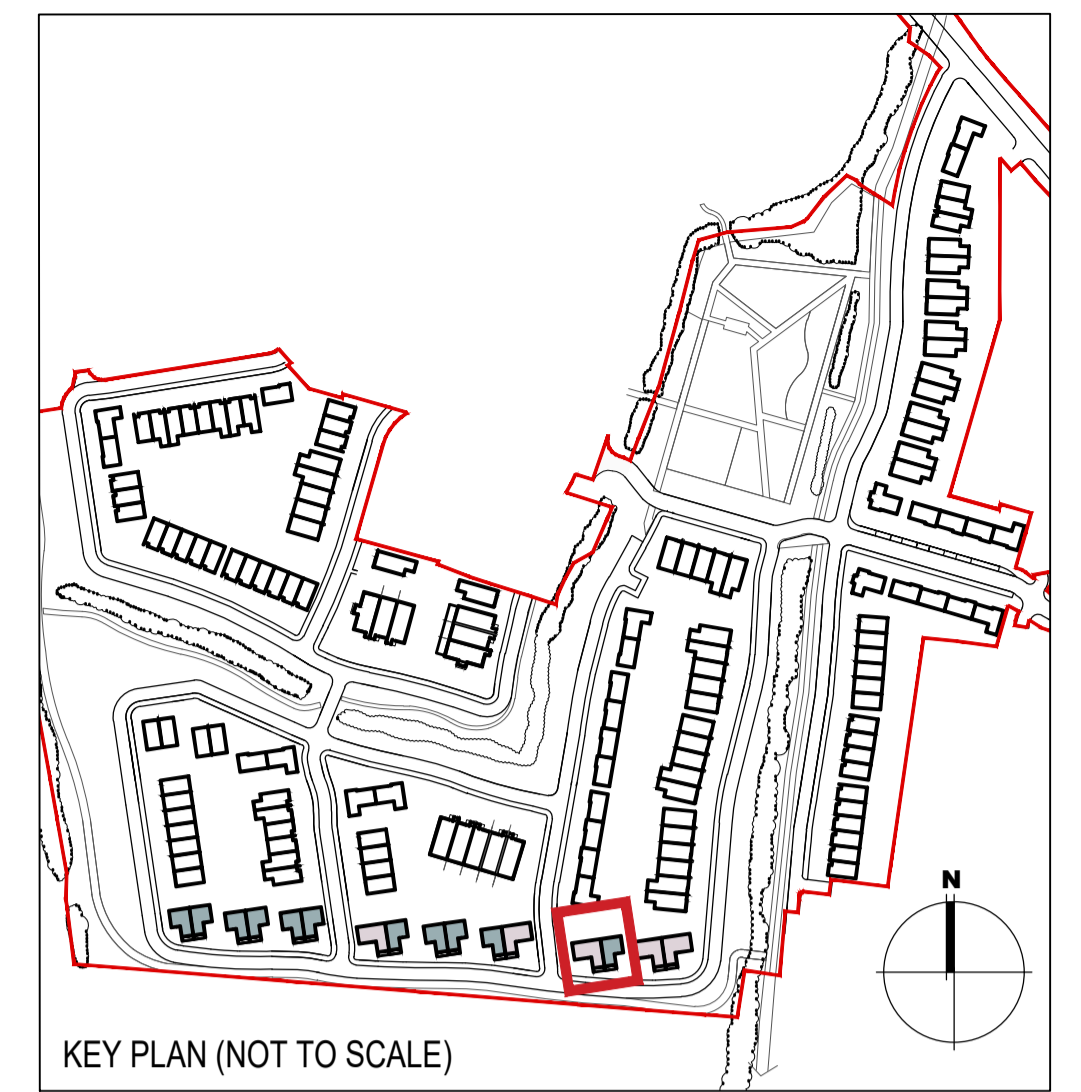


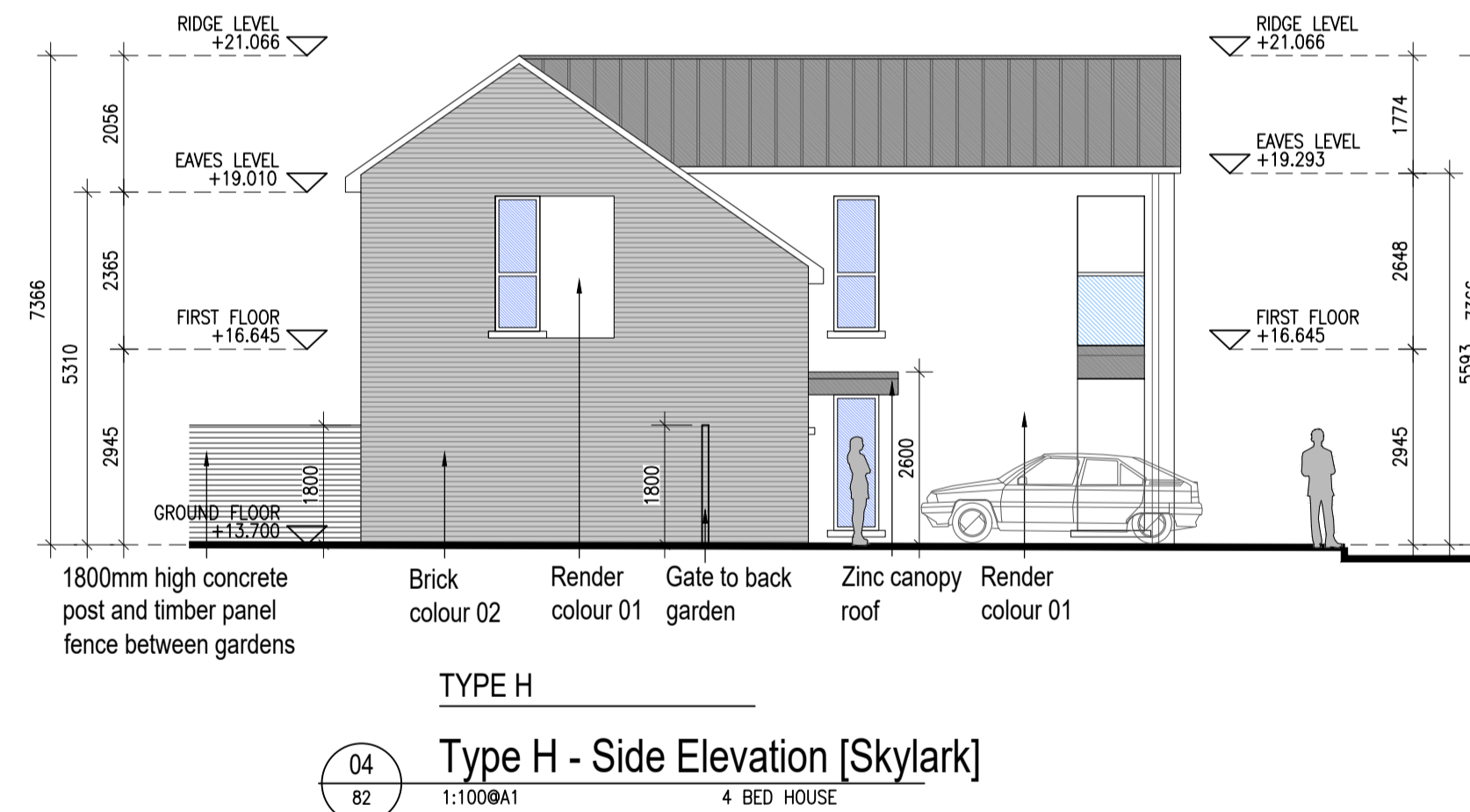
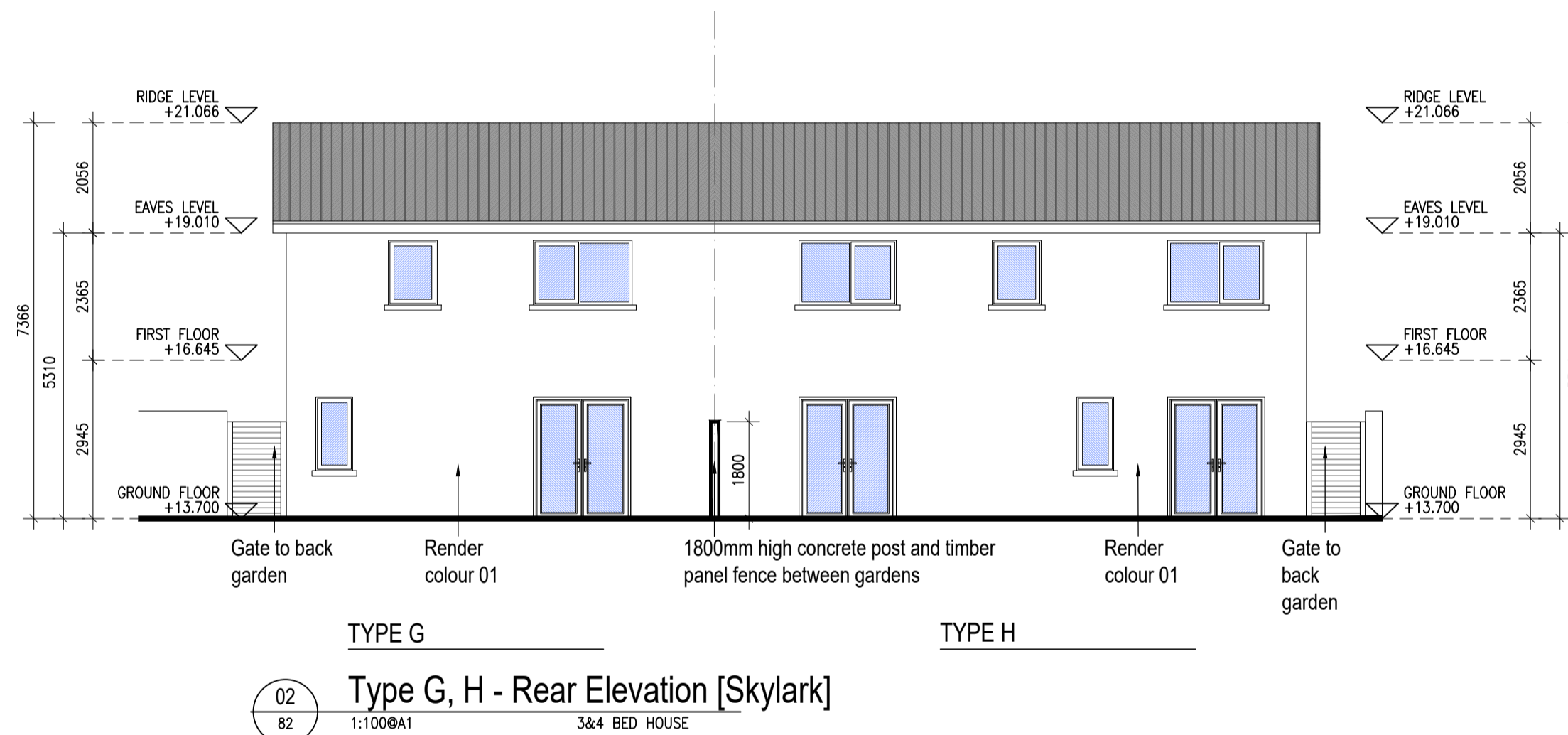
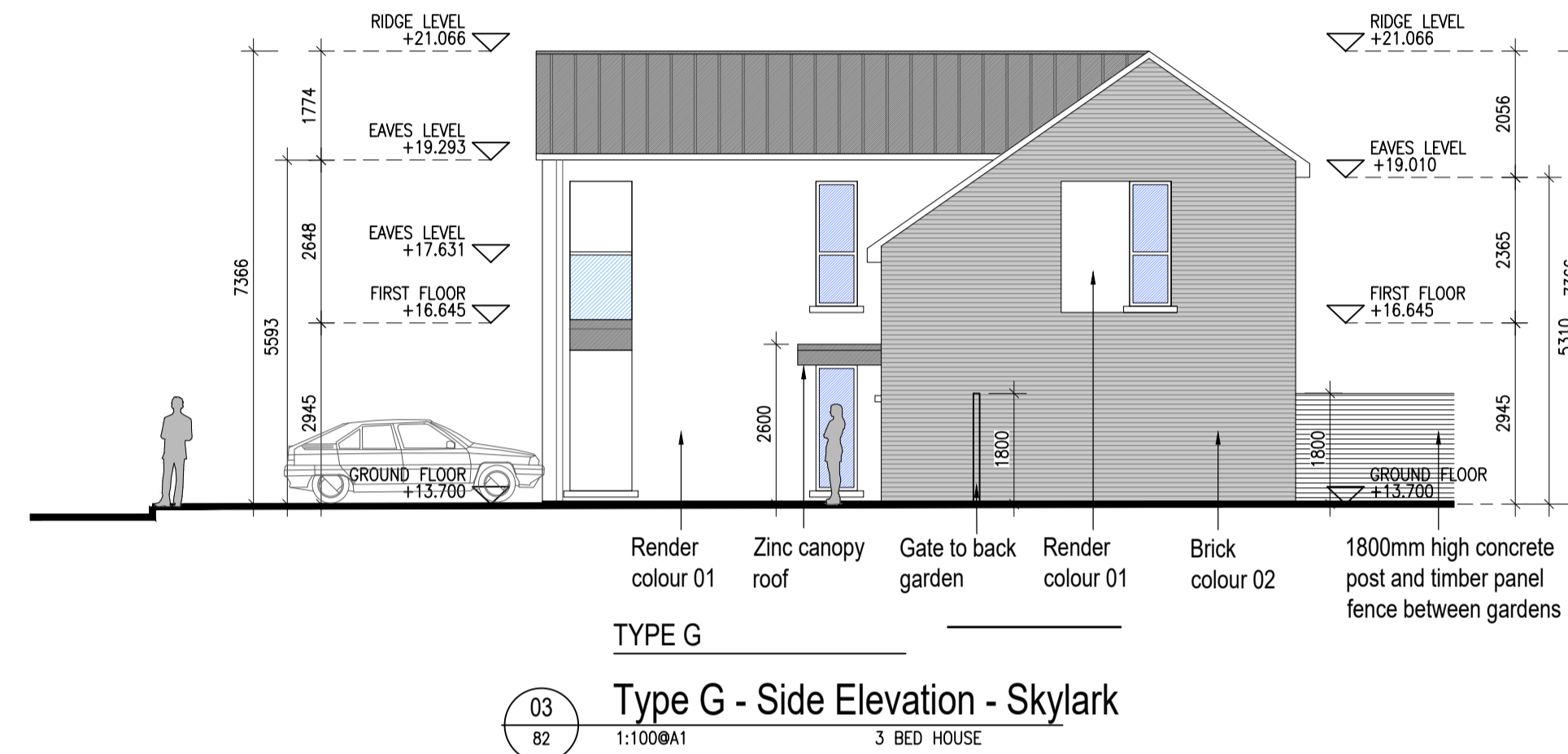
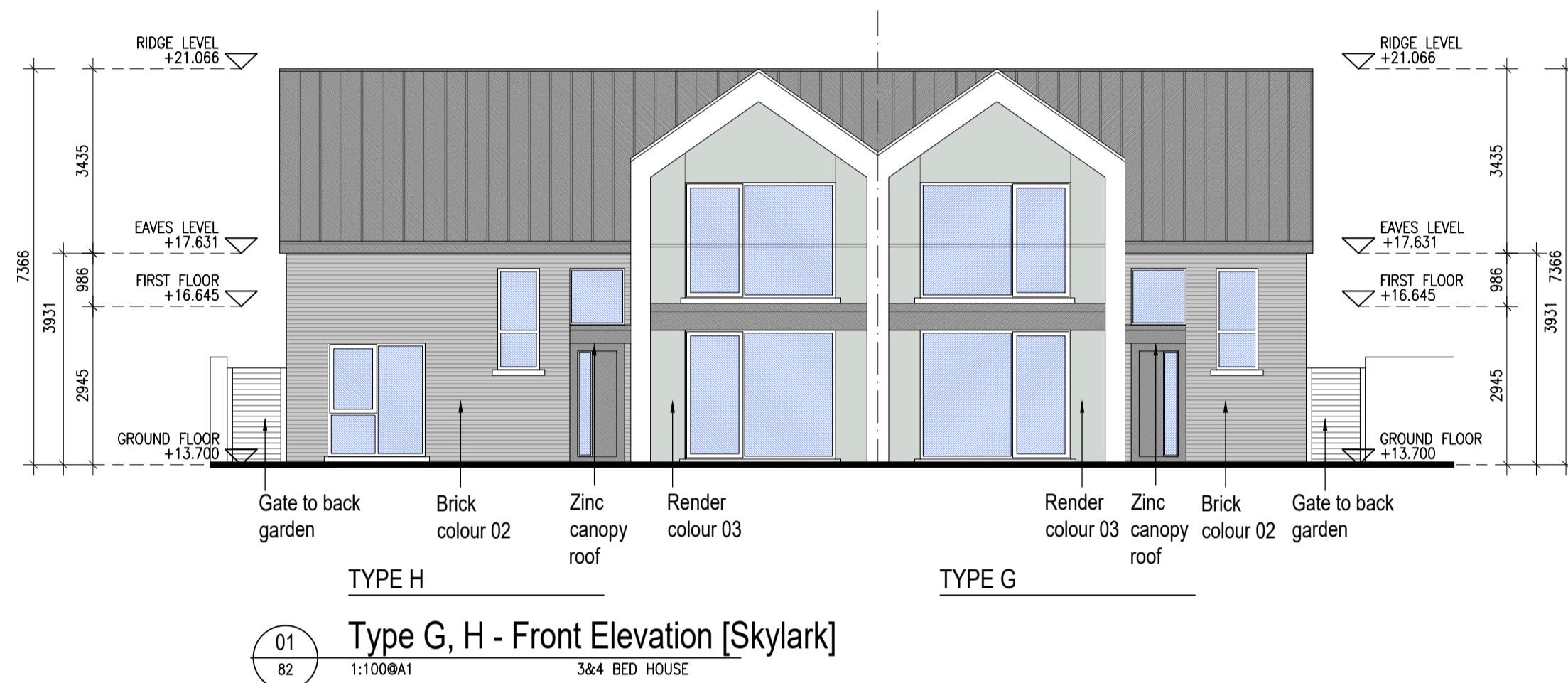
| | | | |
|--------------------------------|--------------------|---------------------|--|
| HOUSE TYPE G | | | |
| Ground floor area | 53.3m ² | | |
| First floor area | 60.7m ² | | |
| Total Floor Area (3-bed unit): | | 114.0m ² | |

| | | | |
|--------------------------------|--------------------|---------------------|--|
| HOUSE TYPE H | | | |
| Ground floor area | 79.0m ² | | |
| First floor area | 68.0m ² | | |
| Total Floor Area (4-bed unit): | | 147.0m ² | |



EXTERNAL FINISHES

- WALLS:** PAINTED SAND / CEMENT RENDER OR PROPRIETARY PRECOLOURED RENDER FINISH
SELECTED BRICKWORK WHERE INDICATED ON DRAWINGS
- WINDOWS:** SELECTED PROPRIETARY DOUBLE / TRIPLE GLAZED WINDOW SYSTEM WITH FRAMES TO APPROVED COLOUR
OBSCURED GLAZING TO BATHROOMS AND EN-SUITES.
- DOORS:** SELECTED PROPRIETARY DOORS AND GLAZED SIDE SCREENS TO APPROVED COLOUR.
- RAINWATER GOODS:** uPVC OR POWDER COATED METAL GUTTERS AND RAINWATER PIPES TO SELECTED COLOUR.
- MAIN ROOF:** CONCRETE ROOF TILES IN SELECTED COLOUR.
- LOW LEVEL PROJECTION:** ZINC CANOPY ROOF TO REAR OF UNITS
- OTHER ITEMS:** uPVC OR POWDER COATED METAL FASCIAS, SOFFITS AND BARGE BOARDS
PAINTED MILDSTEEL RAILINGS AND BALUSTRADES



| HOUSES TYPES | | Numbers of units | |
|--------------------------------|-----------------------|------------------|------------|
| Type A1/A2/A3 | 3 bed [2st.] | 108.6 sqm | 32 |
| Type A4/A5/A6 | 3 bed [2st.] | 117.6 sqm | 11 |
| Type B1/B2/B3 | 3 bed [2st.] | 110.6 sqm | 22 |
| Type C1 | 3 bed [2st.] | 118 sqm | 9 |
| Type C2 | 3 bed [2st.] | 117.4 sqm | 8 |
| Type C3 | 3 bed [2st.] | 118.6 sqm | 1 |
| Type D1 | 4 bed [2st.] | 141 sqm | 9 |
| Type D2 | 4 bed [2st.] | 142 sqm | 2 |
| Type F1 | 4 bed [2st.] | 134.4 sqm | 11 |
| Type F2 | 4 bed [2st.] | 135.6 sqm | 5 |
| Type F3 | 4 bed [2st.] | 146.5 sqm | 2 |
| Type F4 | 4 bed [2st.] | 146.4 sqm | 5 |
| Type F5 | 4 bed [2st.] | 147.8 sqm | 17 |
| Type G | 3 bed [1.5st.] | 114 sqm | 11 |
| Type H | 4 bed [1.5st.] | 147 sqm | 5 |
| DUPLEXES | | | |
| Type J1/J2 | 2 bed Apart. [1st.] | 78.5 sqm | 9 |
| Type K1/K2 | 3bed Duplex [2st.] | 114.4 sqm | 9 |
| Type J3 | 2 bed Apart. [1st.] | 83.5 sqm | 2 |
| Type K3 | 3bed Duplex [2st.] | 114.4 sqm | 2 |
| Total Residential Units | | | 172 |

REFER TO LANDSCAPE ARCHITECT'S DRAWINGS FOR ALL LANDSCAPING DETAILS INCLUDING BOUNDARY TREATMENTS

HOUSE TYPE G, H

| | | | | | | | |
|---|---|--------------|----------------------|-----|------|------------|----------|
| Notes | 1. Copyright Reserved | Issue Status | Progress | No. | Date | Revision | Initials |
| | 2. Work to agreed dimensions only. Do not scale drawing | | Planning Application | | 01 | 26.11.2021 | |
| 3. The contractor is responsible for checking all levels and dimensions on site and shall refer all discrepancies to the Architect 4. Where appropriate, for details of r.c. structure, or mechanical and electrical details, see Engineers drawings 5. Proprietary items shall be fixed in strict accordance with manufacturers instructions. 6. Sizes of proprietary items shall be checked with manufacturer. 7. The contractor shall be responsible for the coordination of structure, finishes and services. | Fire Cert | | | | | | |
| | Disability Cert | | | | | | |
| | Tender | | | | | | |
| | Construction | | | | | | |
| | As Built | | | | | | |
| | Information Only | | | | | | |
| | As Built | | | | | | |

| | | | |
|---------------|---|------|------------|
| Project | Portmarnock South Phase 1D Quintain Developments Ireland Limited | | |
| Drawing Title | House Type G,H - Elevations | | |
| Drawing No | 61588-P-082 | | |
| Scale | 1:100@A1 | Rev | 01 |
| Drawn | JN | Date | 26.11.2021 |

6-7 HARICOURT TERRACE, DUBLIN 2, IRELAND
 1-353-1-6782400 1-353-1-6787395
 architects@bkd.ie
bkdarchitects
 BURKE-KENNEDY DOYLE