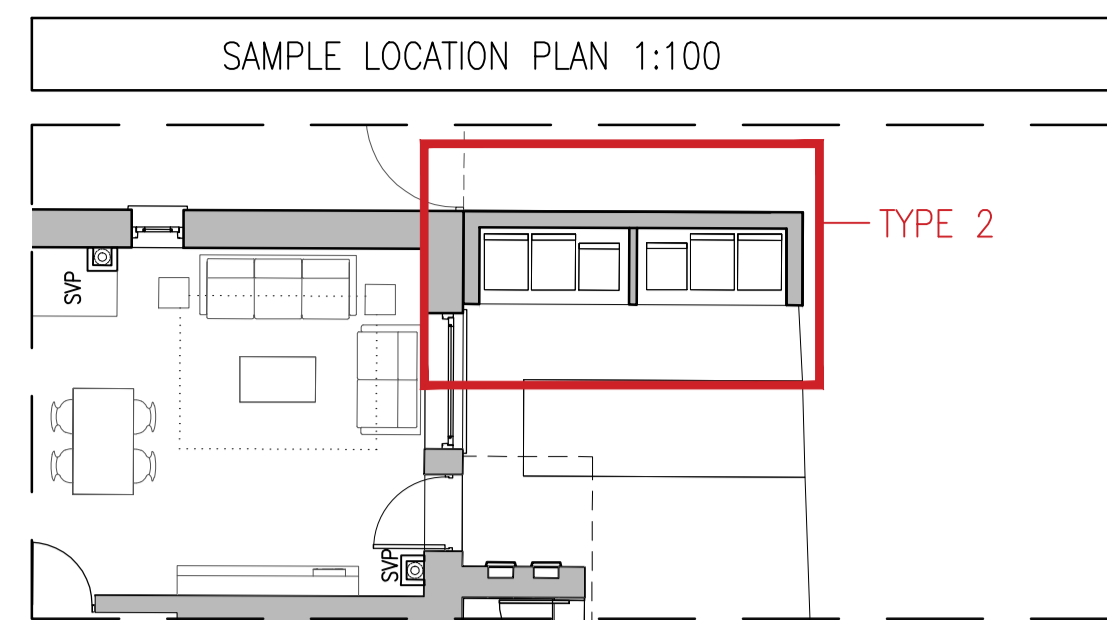


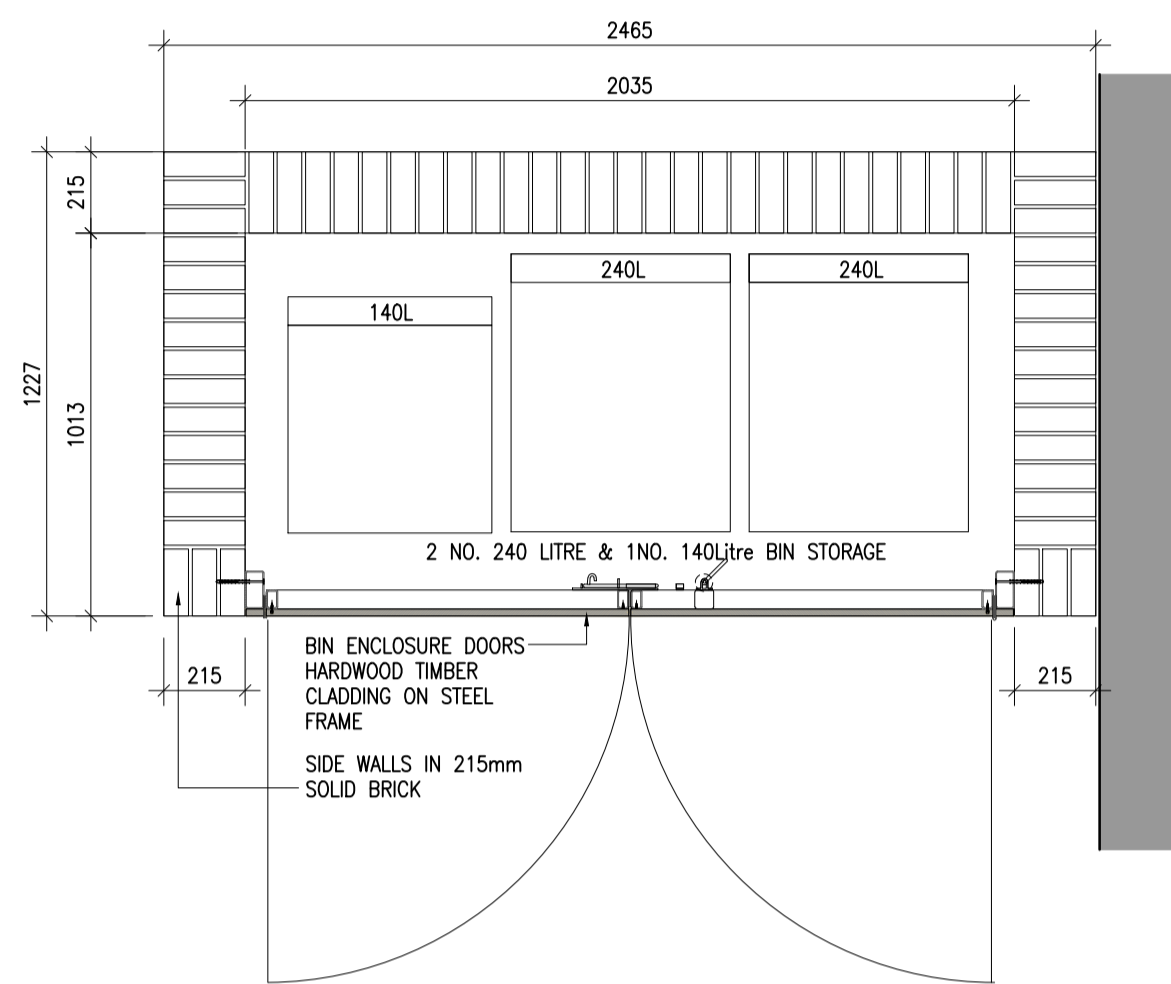
TYPE 1

House Unit Type:
A2,A4,B2

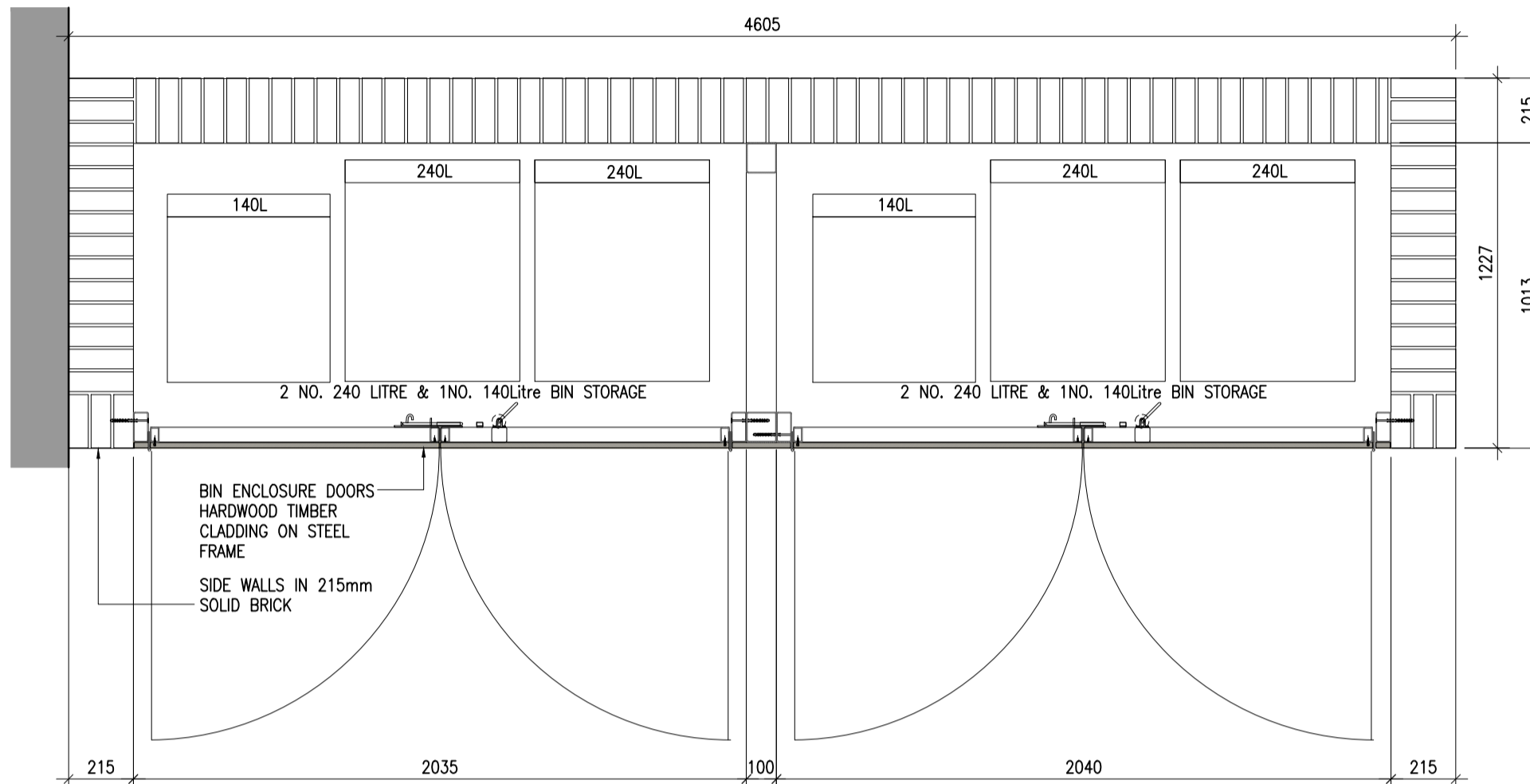


TYPE 2

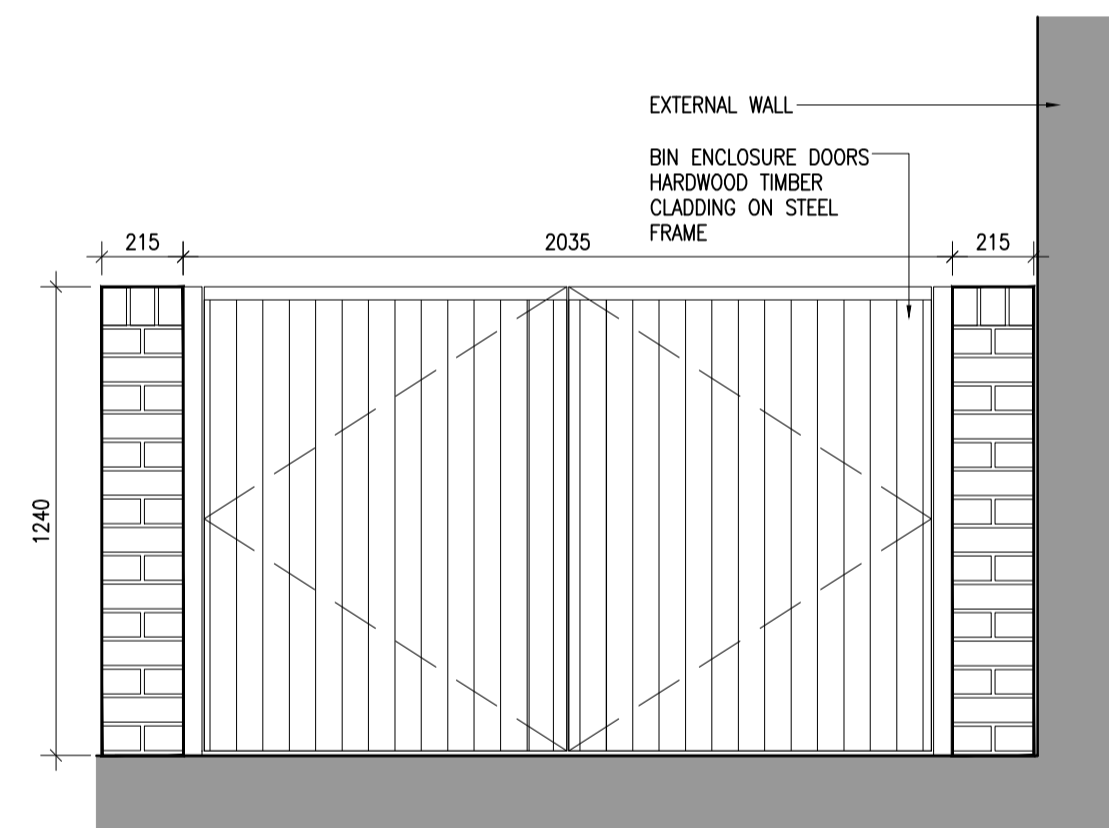
Duplex Unit Type:
J1,K1,J2,K2



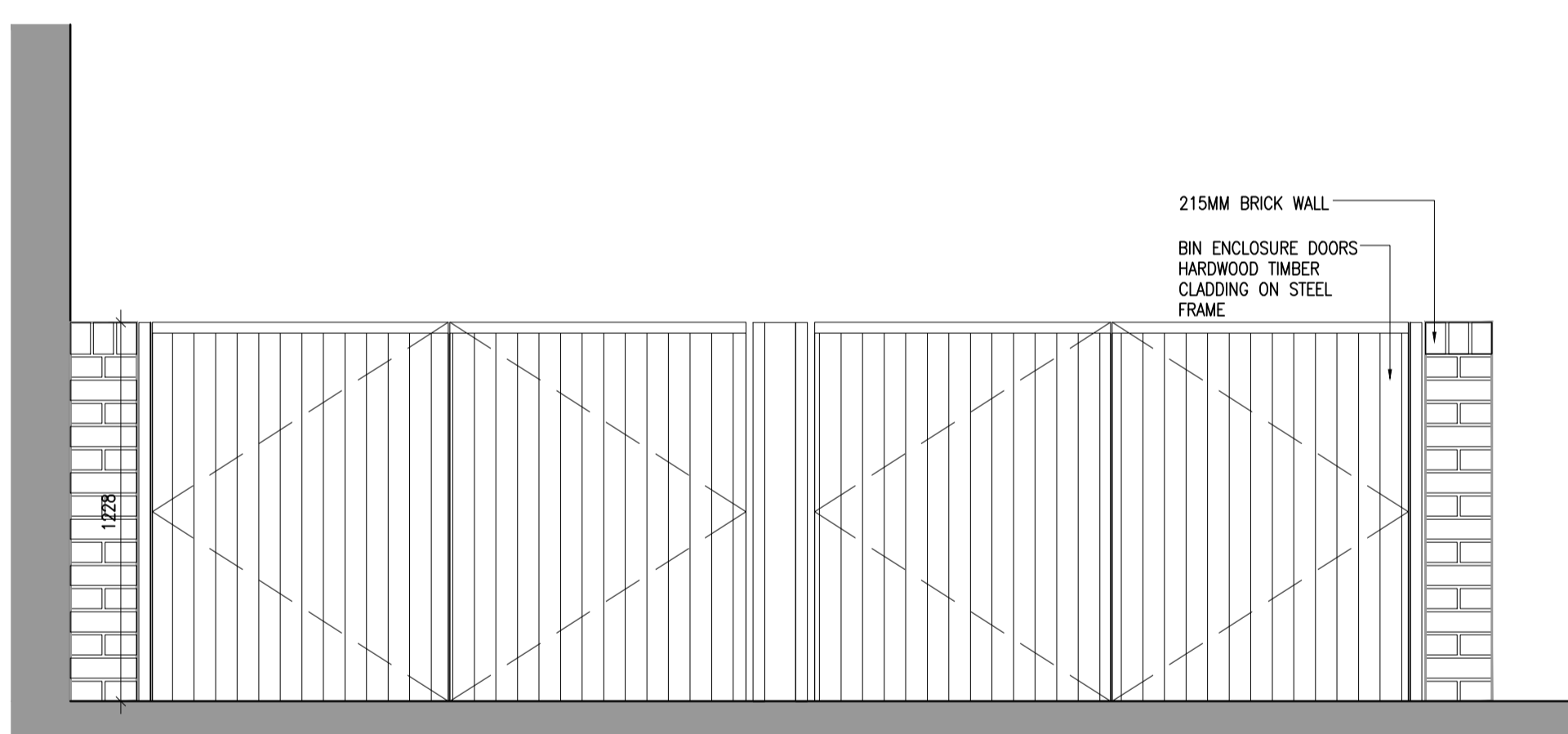
1 Bin store Type 1 Plan
Scale 1:20



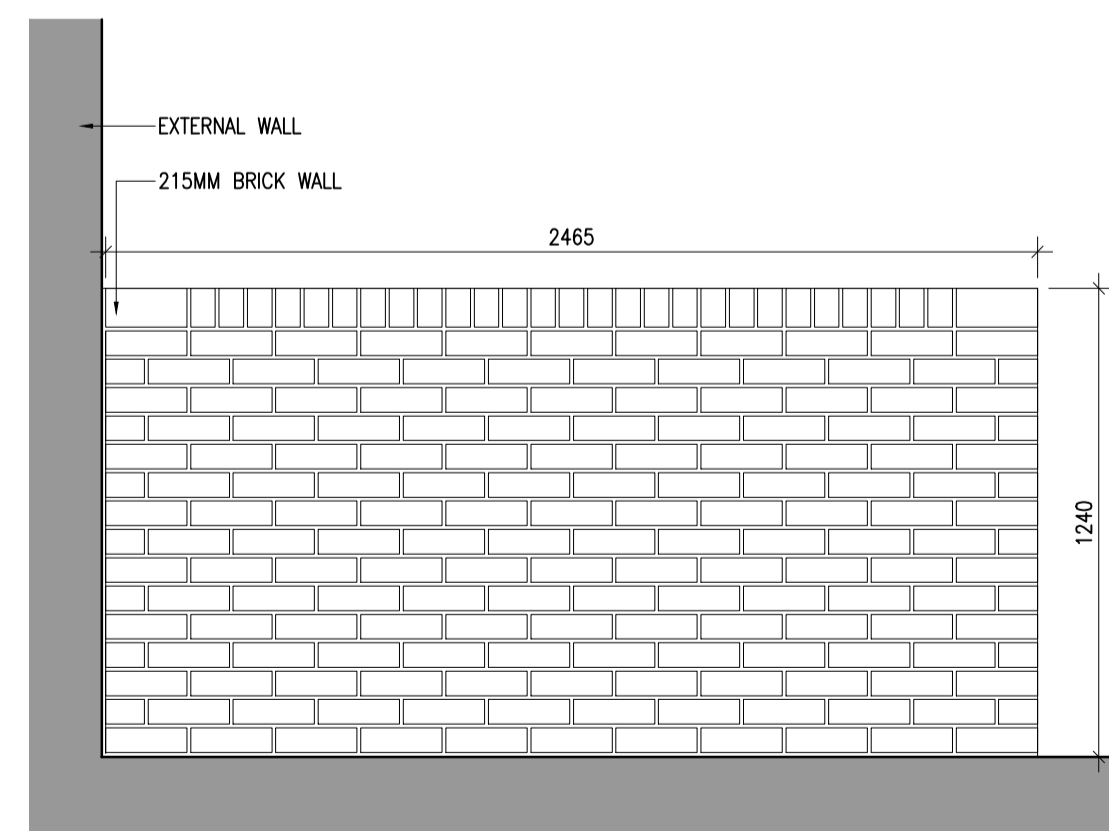
5 Bin store Type 2 Plan
Scale 1:20



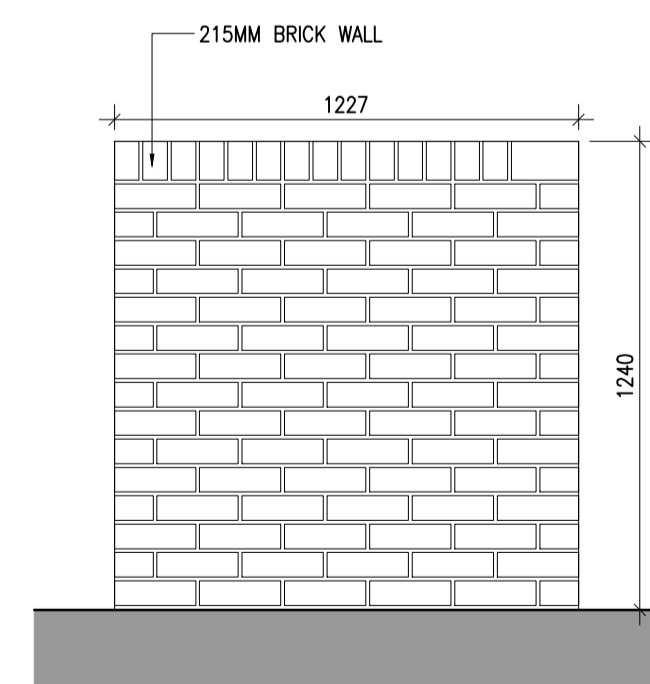
2 Bin store Type 1 Front Elevation
Scale 1:20



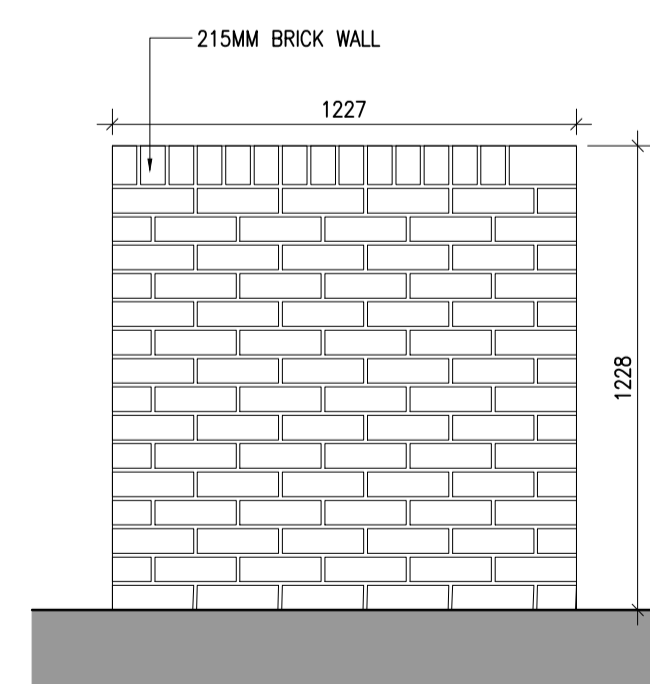
6 Bin store Type 2 Front Elevation
Scale 1:20



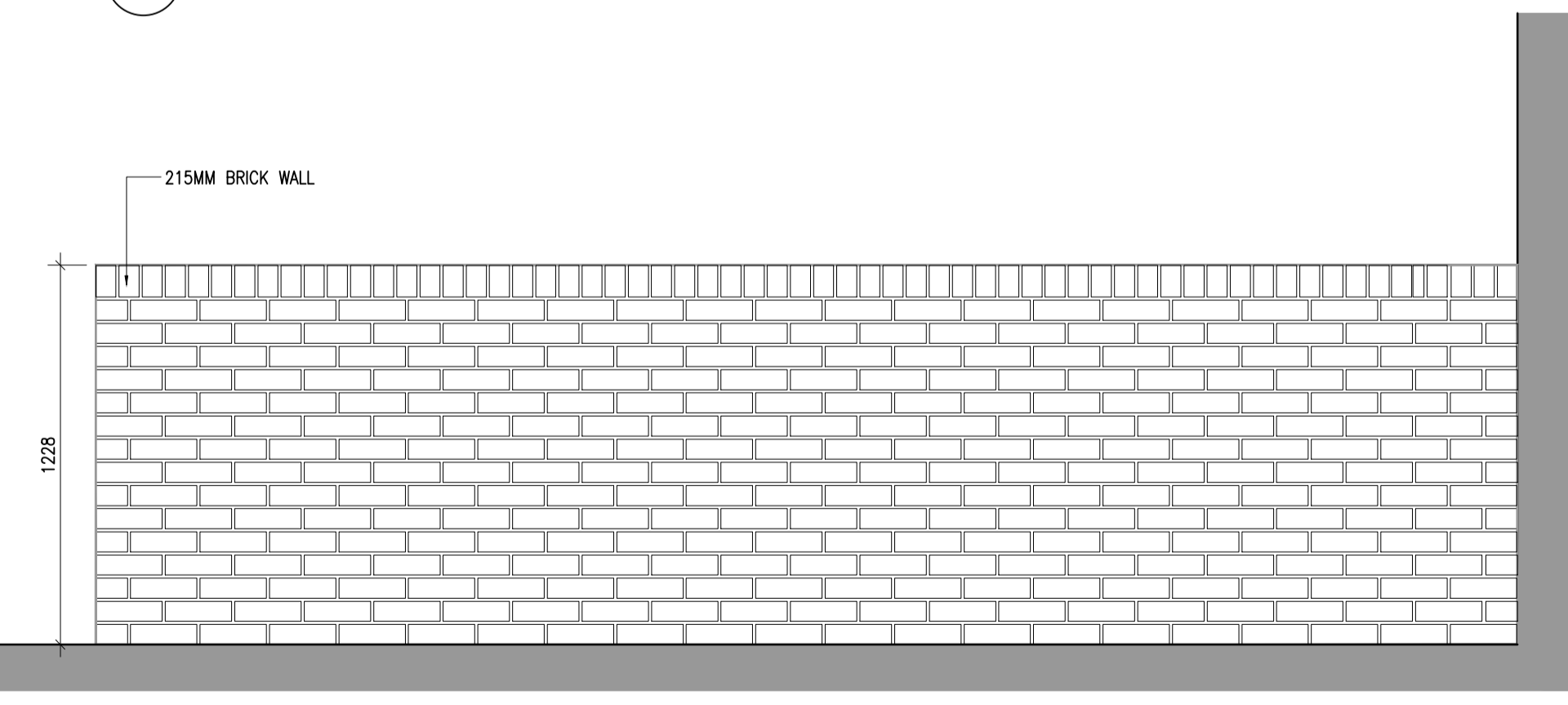
3 Bin store Type 1 Rear Elevation
Scale 1:20



4 Bin store Type 1 Side Elevation
Scale 1:20



7 Bin store Type 2 Side Elevation
Scale 1:20



8 Bin store Type 2 Rear Elevation
Scale 1:20

Notes	Issue Status
1. Copyright Reserved	
2. Work to ignore dimensions only. Do not scale drawing	
3. The contractor is responsible for checking all levels and dimensions on site and shall refer all discrepancies to the Architect	
4. Where appropriate, for details of r.c. structure, or mechanical and electrical details, see Engineers drawings	
5. Proprietary items shall be fixed in strict accordance with manufacturers instructions.	
6. Sizes of proprietary items shall be checked with manufacturer.	
7. The contractor shall be responsible for the coordination of structure, finishes and services.	
M:\Project Section - Current\61588 Phase 1D Portmarnock\CAD\Drawings\Construction\Details\61588 - Bin Store Details_rev.dwg 25/11/2021 14:14:05	

No.	Date	Revision	Initials
01	26.11.2021	SHD PLANNING APPLICATION TO ABP	AM

Project	Portmarnock South - Phase 1D Quintain Developments Ireland Limited
Drawing Title	Bin store Details Type 1, 2
Drawing No	61588-P-202
Scale	1:20@A1
Rev	01
Drawn	AM
Date	26.11.2021

6-7 HARCOURT TERRACE, DUBLIN 2, IRELAND
t +353-1-618 2400 f +353-1-676 7396
www.bkd.ie

bkdarchitects
BURKE-KENNEDY DOYLE