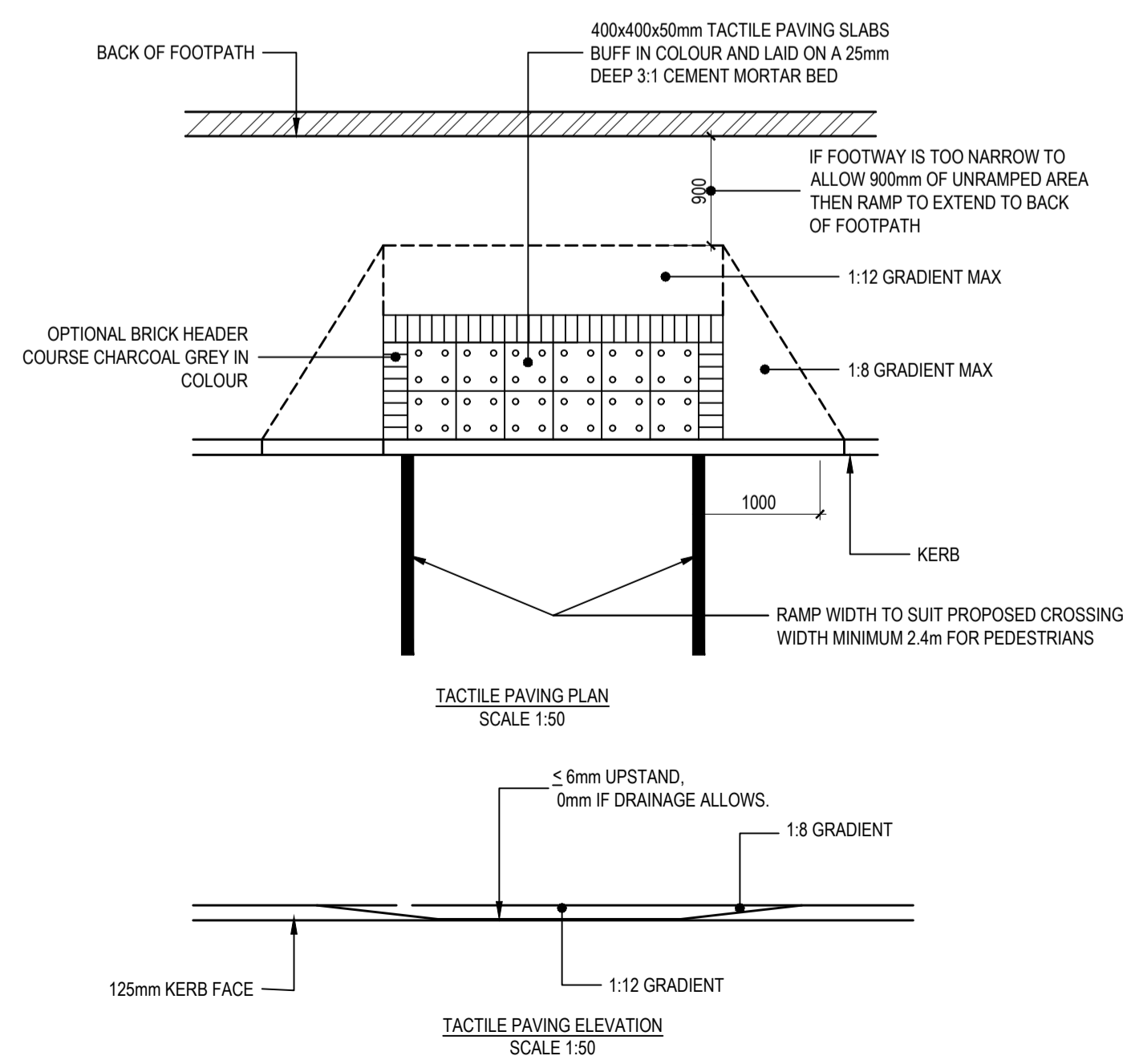
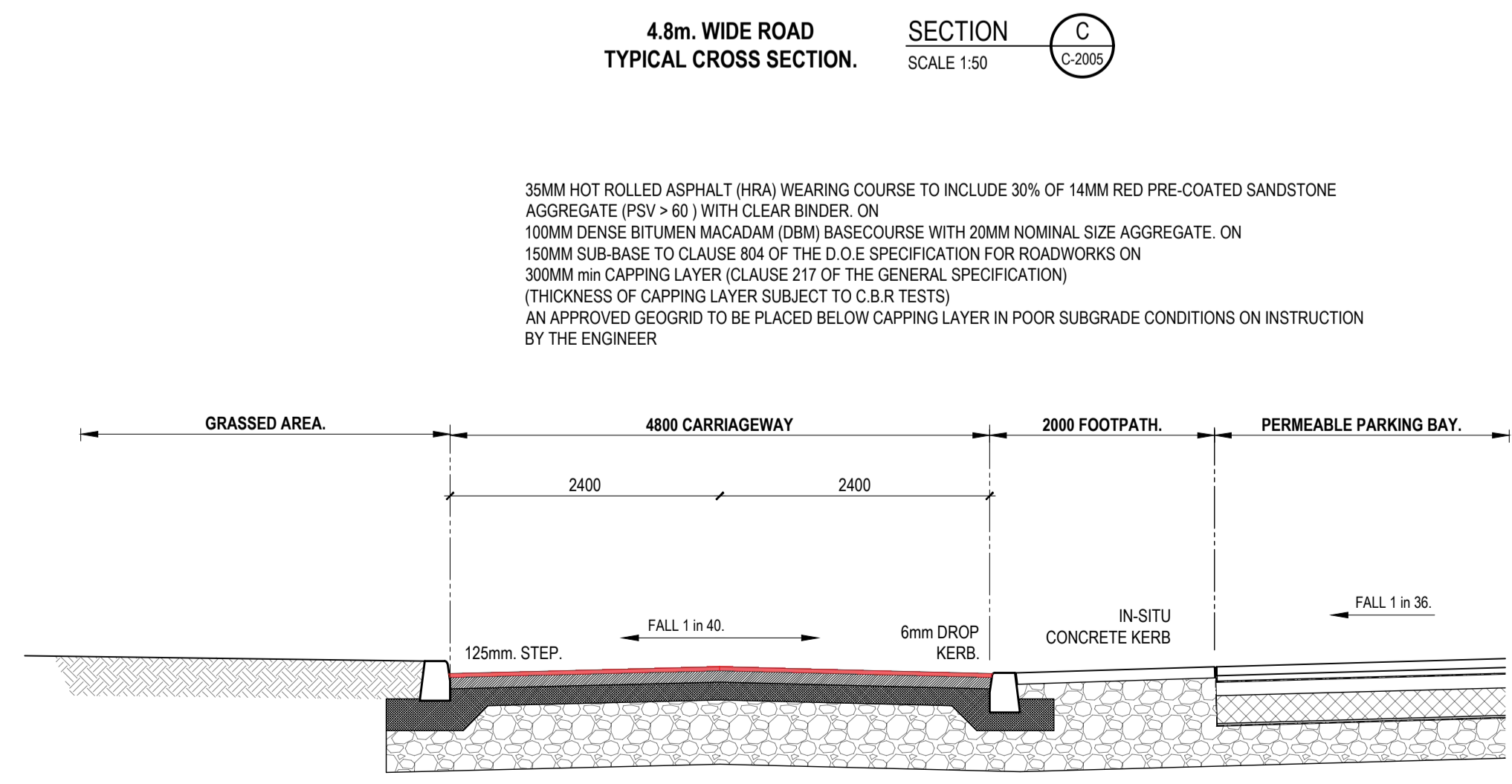
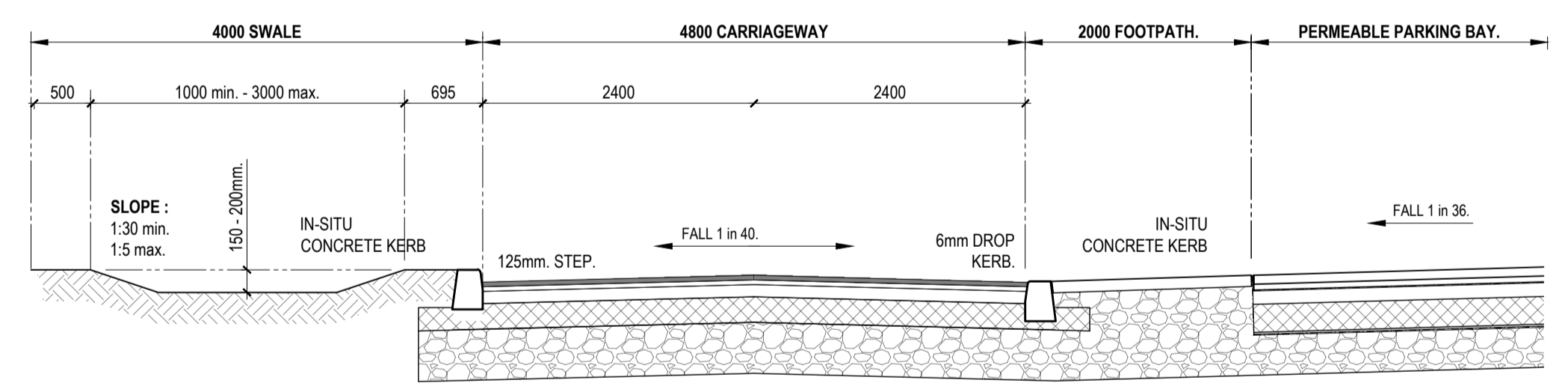
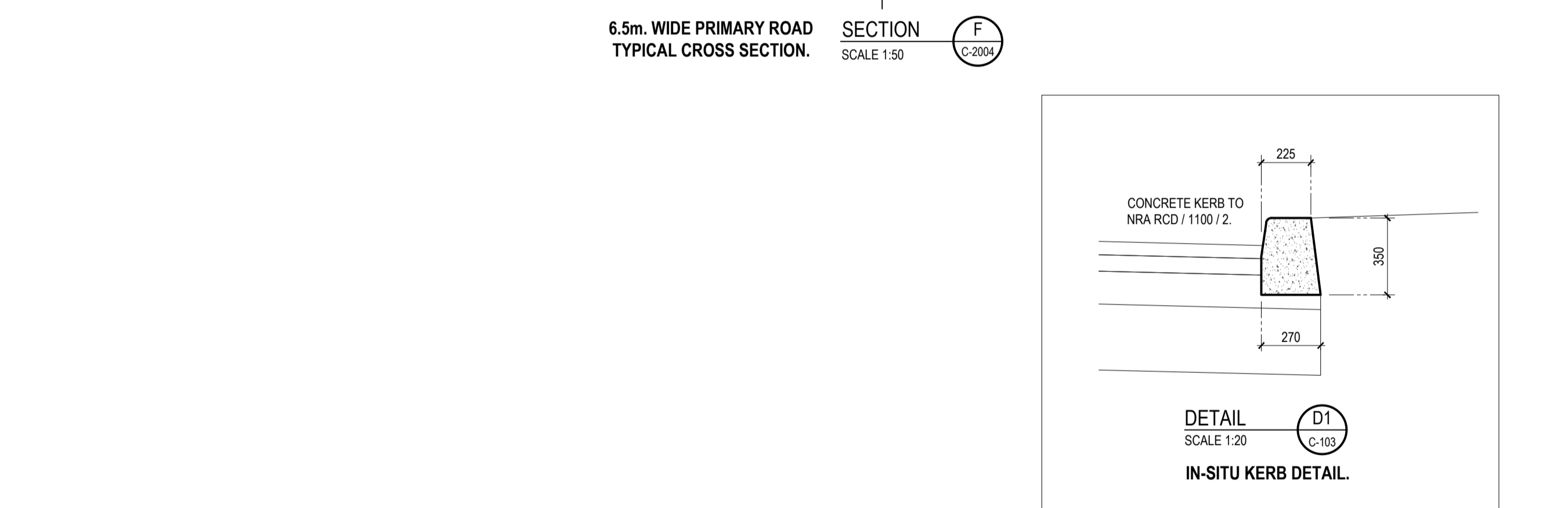
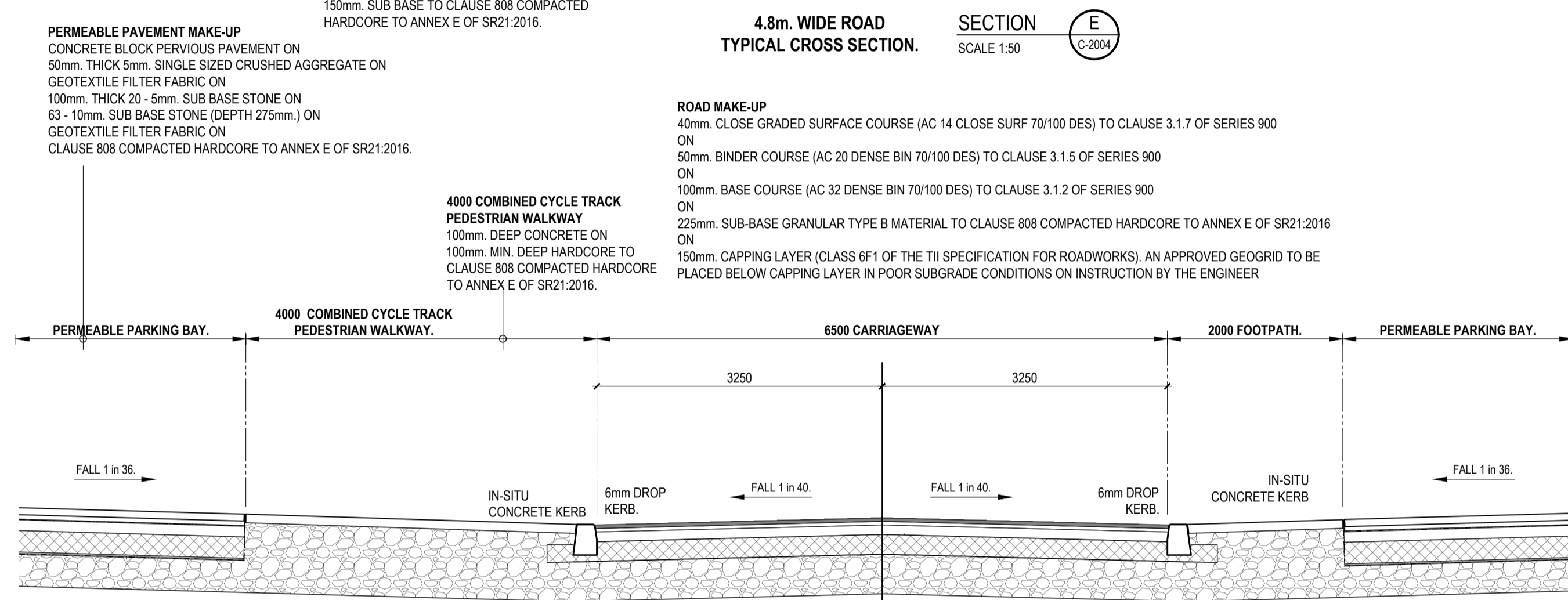
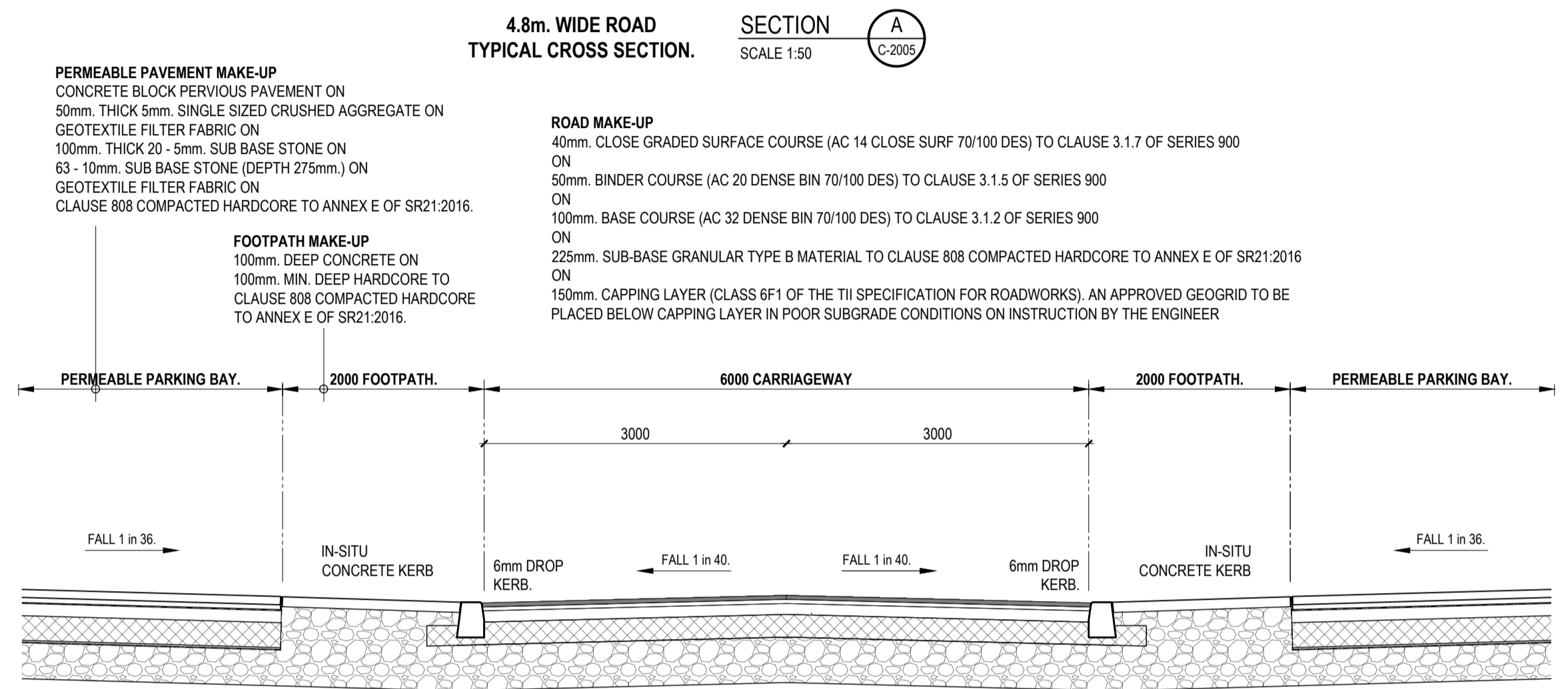
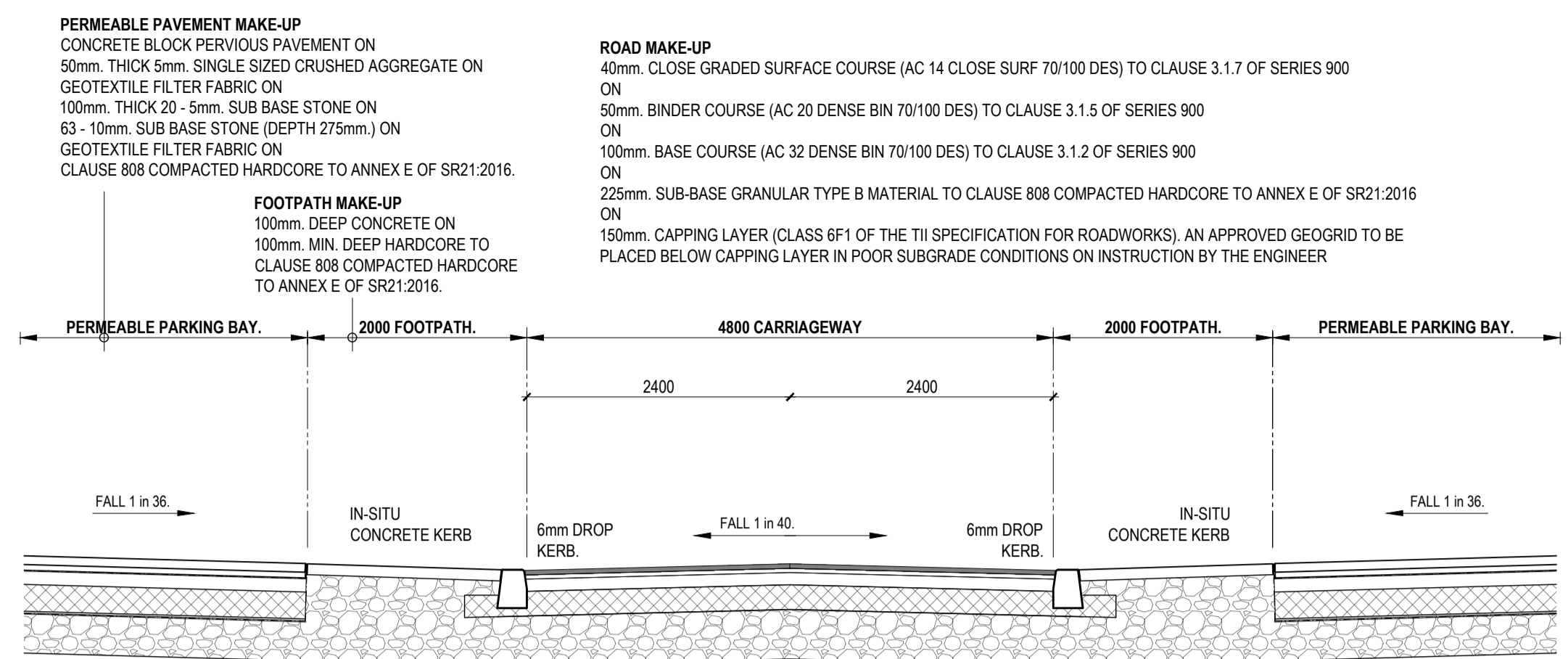
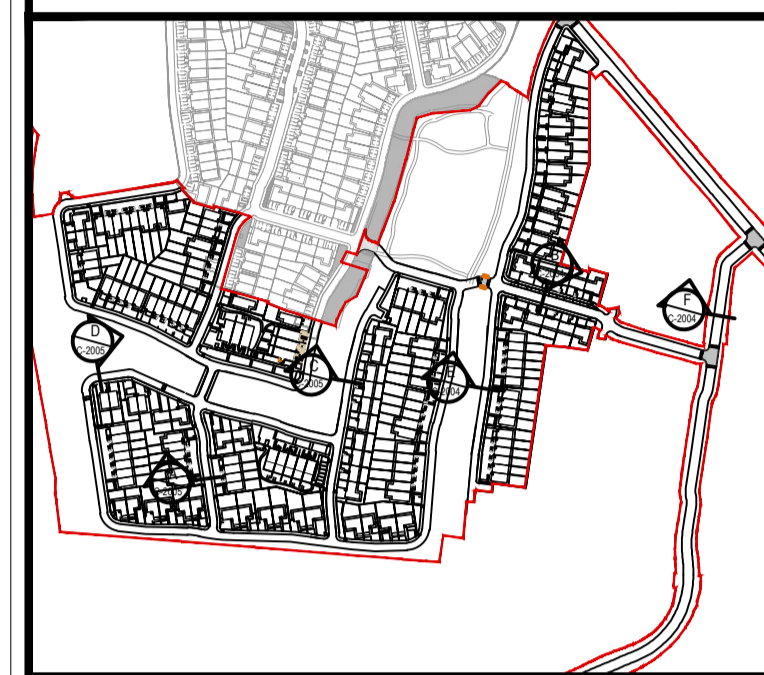
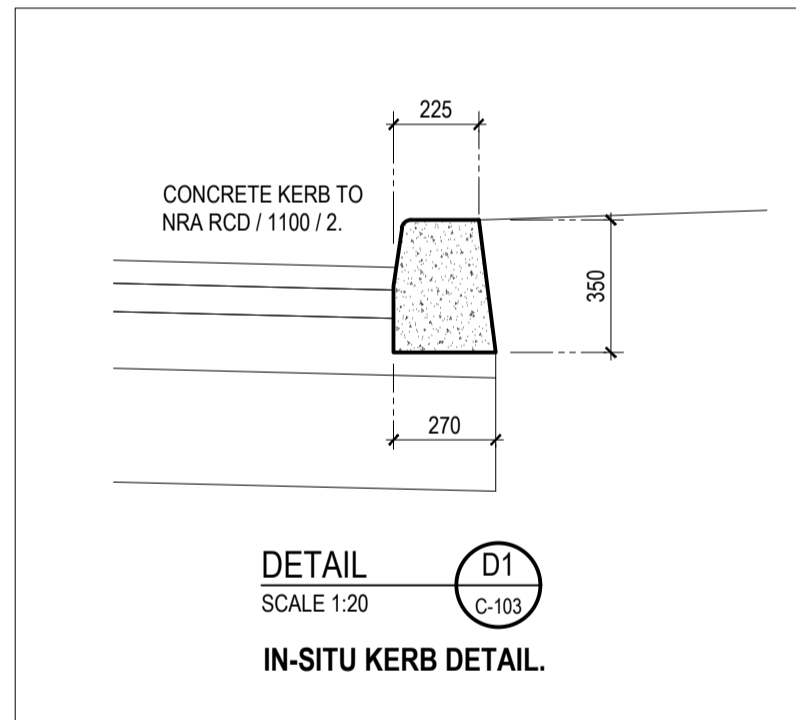


- NOTES :**
1. THIS DRAWING TO BE READ IN CONJUNCTION WITH ALL RELEVANT ARCHITECTS AND ENGINEERS DRAWINGS.
 2. FIGURED DIMENSIONS ONLY TO BE TAKEN FROM THIS DRAWING.
 3. ALL LEVELS ARE RELATIVE TO DATUM AT MALIN HEAD.
 4. THIS DRAWING IS A COPY OF AN ELECTRONIC FILE AND IS COPYRIGHT.



- NOTE:**
1. TACTILE PAVING SLABS 400x400mm BUFF IN COLOUR.
 2. CONFIGURATION TO BE 2 ROWS, OF 6 NUMBER WIDE, 400mm sq. TACTILE TILES ON BOTH SIDES OF THE ROAD.
 3. THE TACTILE DOMES ON THE TILES MUST BE LINED UP TO GIVE THE DIRECTION OF TRAVEL IN ORDER TO CROSS THE ROAD STRAIGHT.
 4. UTILITY/SERVICE BOXES SHOULD NOT BE LOCATED IN TACTILE PAVED AREAS WHERE POSSIBLE.
 5. OPTIONAL BRICK HEADER COURSE OUTLINING TACTILE PAVED AREA TO BE 215x100x65mm CHARCOAL GREY IN COLOUR.
 6. TRAFFIC BOXES AND DUCTING (INCLUDING DUCTING TO ILLUMINATED BOLLARDS AND SCATS LOOPS) TO SUIT SITE ARRANGEMENTS.
 7. ALL DIMENSION ARE IN MILLIMETRES UNLESS OTHERWISE STATED.
 8. ALL CLAUSE REFERENCES RELATE TO VOLUME 1 SPECIFICATION FOR ROAD WORKS (NRA).



CROSSING DETAIL, ISSUED FOR PLANNING	SW	24.11.21	P02
INITIAL ISSUE	LR	11.05.21	P01
Description:		Drawn:	Date:

Client:
Quintain Developments Ireland Limited

Project:
Portmarnock South Phase 1D

Clients Representative:
J. B. Barry and Partners Limited Consulting Engineers

Classon House
Dundrum Business Park
Dundrum Road
Dublin 14

Tel: +353 1 485 1400
email: info@jbbarry.ie
web: www.jbbarry.ie

Drawn By:	LR	Date:	APRIL 2021
Checked By:	SW	Date:	APRIL 2021
Approved By:	JO'B	Date:	APRIL 2021
Internal Project Ref:	21205	Stage:	PLANNING
		Suit:	S3

Drawing Title:
ROAD & CYCLE TRACKS SECTIONS & DETAILS SHEET 1

Scales:	1:50 & 1:20 @ A1.
Drawing No.:	21205-JBB-00-XX-M2-C-02007
Rev.:	P02