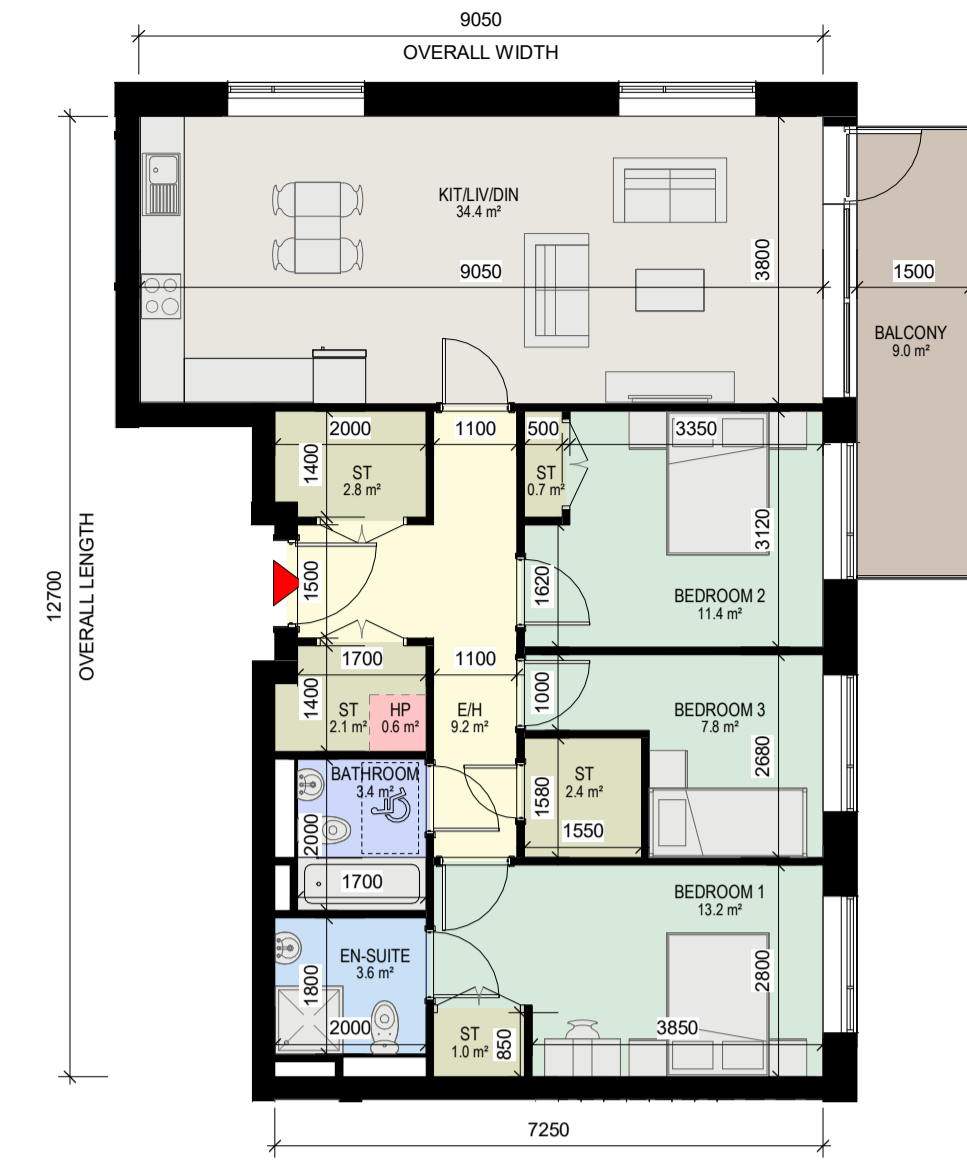
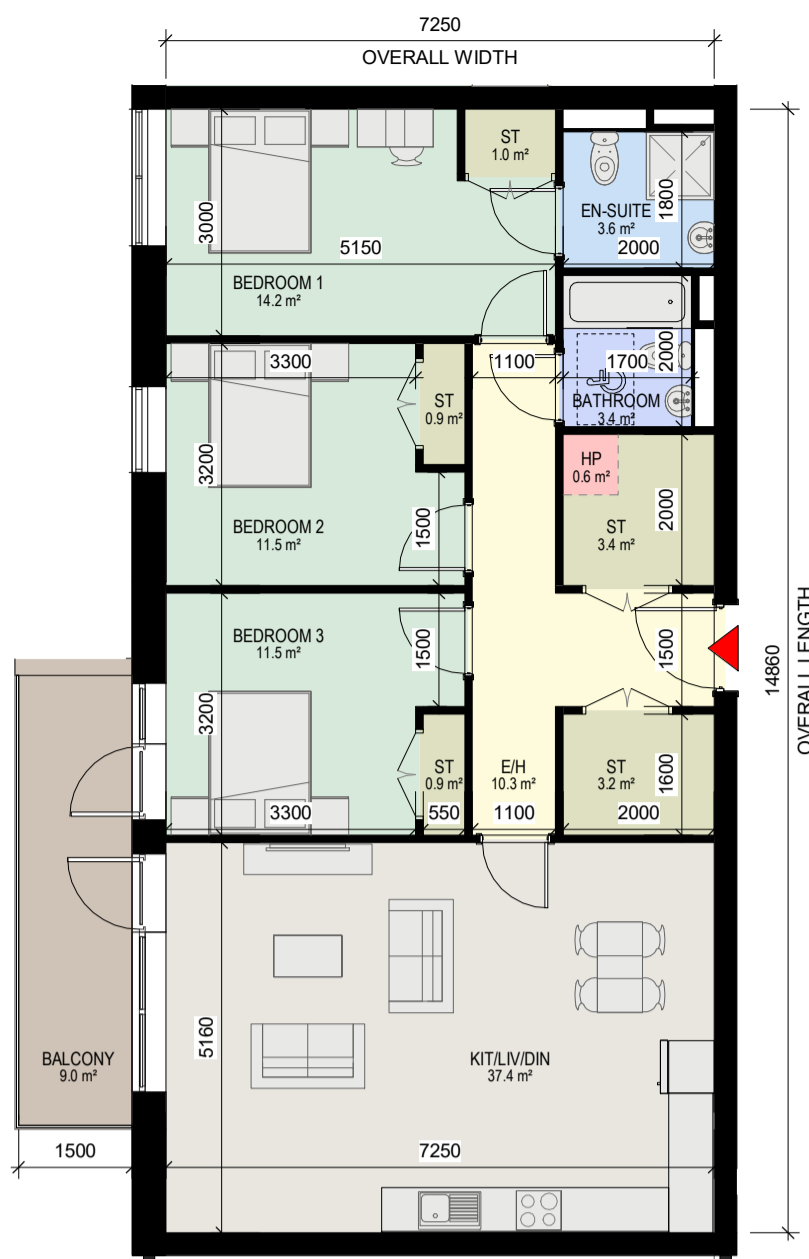


# PLANNING DRAWING



1 Apartment Type 3A

1: 100

- 3 BED, 6 PERSON APARTMENT  
- GROSS INTERNAL AREA (GIA) : 107.73 sqm

2 Apartment Type 3B

1: 100

- 3 BED, 5 PERSON APARTMENT  
- GROSS INTERNAL AREA (GIA) : 98.19 sqm

3 Apartment Type 3C

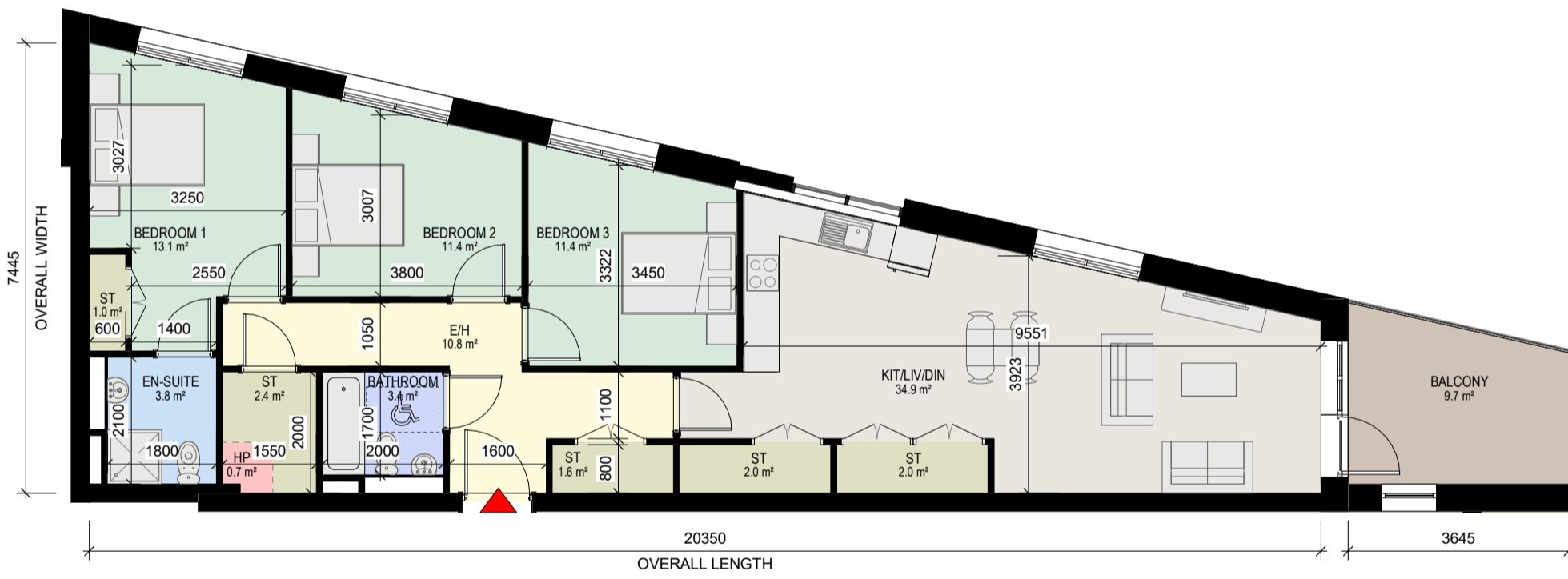
1: 100

- 3 BED, 6 PERSON APARTMENT  
- GROSS INTERNAL AREA (GIA) : 108.46 sqm

4 Apartment Type 3D

1: 100

- 3 BED, 5 PERSON APARTMENT  
- GROSS INTERNAL AREA (GIA) : 101.71 sqm



APARTMENT ROOM LEGEND	
[Green Box]	BEDROOM
[Light Green Box]	KITCHEN /DINING /LIVING
[Blue Box]	BATHROOM
[Light Blue Box]	EN-SUITE
[Yellow Box]	STORE
[Brown Box]	BALCONY
[Light Yellow Box]	ENTRANCE / HALL
[Red Box]	HP (HOT PRESS)
[Pink Box]	PAS

SYMBOL LEGEND	
[Red Triangle]	APARTMENT ENTRANCE
[Blue Square]	1200mm x750mm TURNING SPACE

Rev	Description	Date	Dr	App	by
P02	Full Application Drawings	14/03/22	VF	WP	
P01	Draft Full Application Drawings	20/01/22	VF	WP	

Project Stage

# PLANNING

Client:  
Steeplefield Limited,

Project:  
Greenhills Road, Walkinstown,  
Dublin 12

Drawing Title:  
PROPOSED APARTMENT TYPES  
3 BED TYPES

Drawn	Checked	Paper Size	Scale	Date
VF	WP	A1	1: 100@A1	12/20/21

Project No.	Drawing No.	Classification	Revision
PE18001	002196		P02

File Name:  
PE18001-CWO-ZZ-ZZ-DR-A-002196

Status:  
S3 ISSUED FOR PLANNING

5 Apartment Type 3E

1: 100

- 3 BED, 6 PERSON APARTMENT  
- GROSS INTERNAL AREA (GIA) : 104.31 sqm

6 Apartment Type 3F

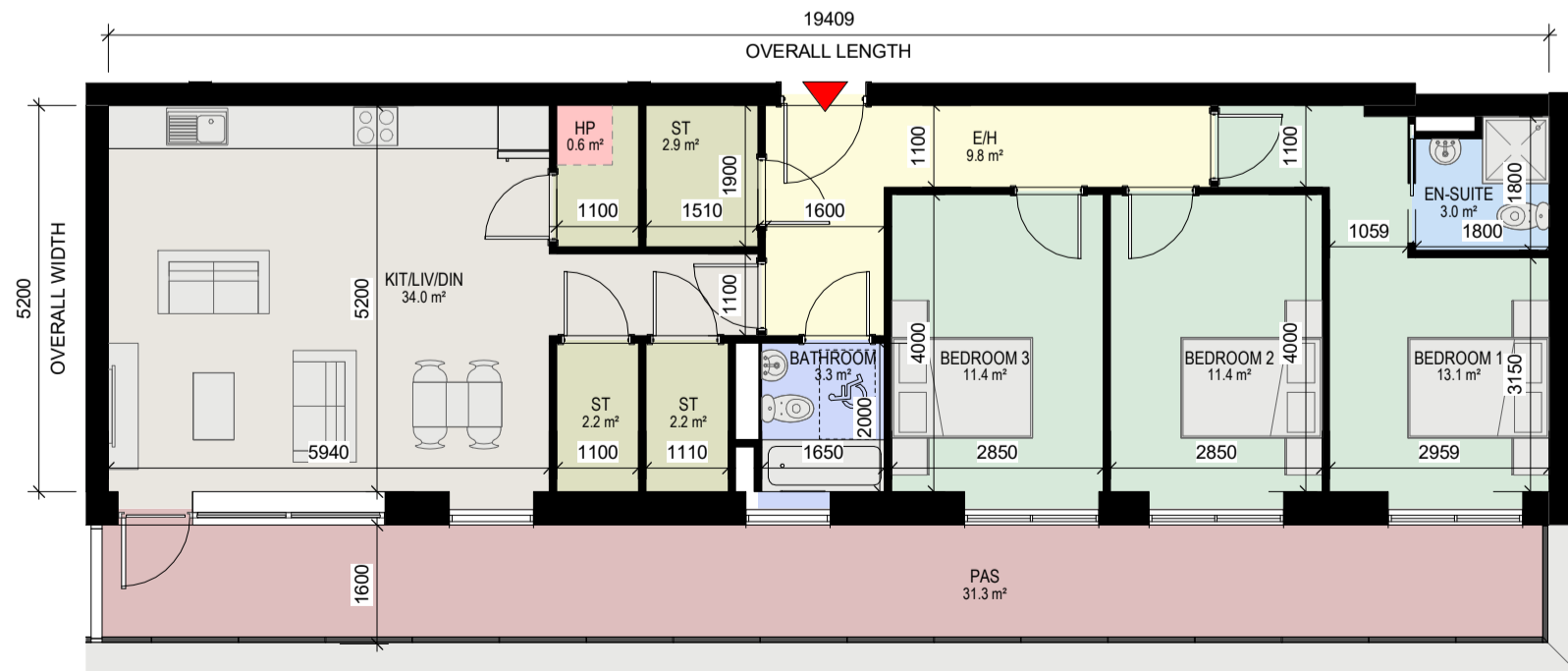
1: 100

- 3 BED, 6 PERSON APARTMENT  
- GROSS INTERNAL AREA (GIA) : 109.27 sqm

7 Apartment Type 3G

1: 100

- 3 BED, 6 PERSON APARTMENT  
- GROSS INTERNAL AREA (GIA) : 96.26 sqm



8 Apartment Type 3H

1: 100

- 3 BED, 6 PERSON APARTMENT  
- GROSS INTERNAL AREA (GIA) : 100.55 sqm

9 Apartment Type 3I

1: 100

- 3 BED, 6 PERSON APARTMENT  
- GROSS INTERNAL AREA (GIA) : 109.16 sqm