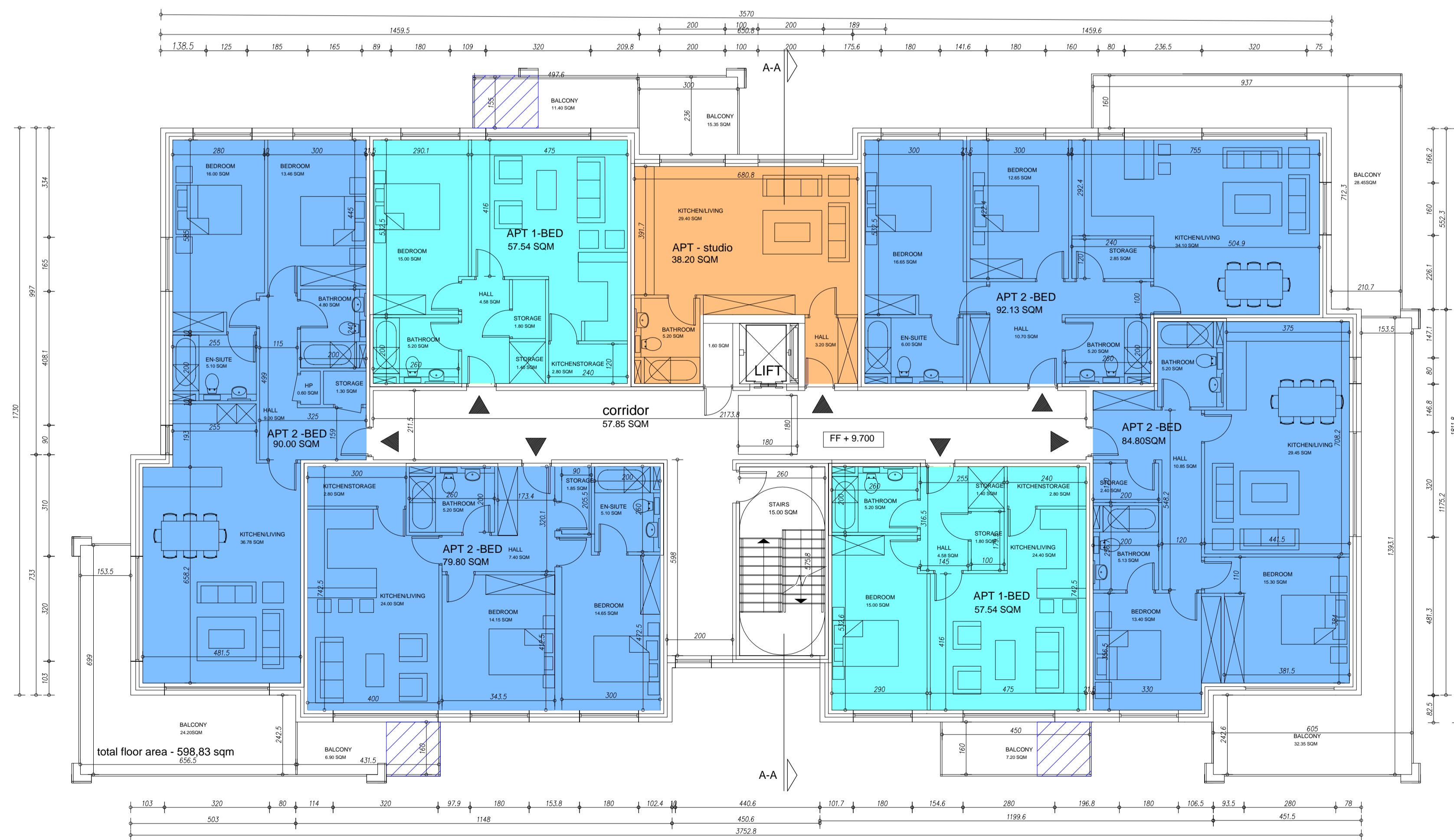


1 PROPOSED BLOCK 4 & 6 - GROUND FLOOR PLAN
1 : 100



2 PROPOSED BLOCK 4 & 6 - 1st - 5th FLOOR PLAN
1 : 100

- STUDIO
- 1 Bed Apt.
- 2 Bed Apt.

NOTE : FLOOR LEVELS TO BLOCK 6

| | | |
|--------------|--------------|---|
| GROUND FLOOR | FFL + 6.400 | ✳ |
| 1-ST FLOOR | FFL + 9.900 | ✳ |
| 2-ND FLOOR | FFL + 12.900 | ✳ |
| 3-RD FLOOR | FFL + 15.900 | ✳ |
| 4-TH FLOOR | FFL + 18.900 | ✳ |
| 5-TH FLOOR | FFL + 21.900 | ✳ |

IDENTICAL FLOOR TO THIS PLAN

| | | |
|------------|--------------|---|
| 1-ST FLOOR | FFL + 9.700 | ✳ |
| 2-ND FLOOR | FFL + 12.700 | ✳ |
| 3-RD FLOOR | FFL + 15.700 | ✳ |
| 4-TH FLOOR | FFL + 18.700 | ✳ |
| 5-TH FLOOR | FFL + 21.700 | ✳ |

NOTE: = OMIT PART BALCONY ON FIRS FLOOR + SECOND FLOOR