



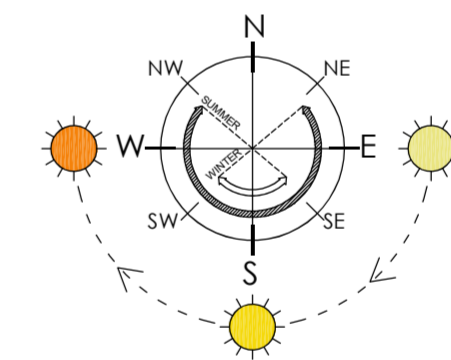
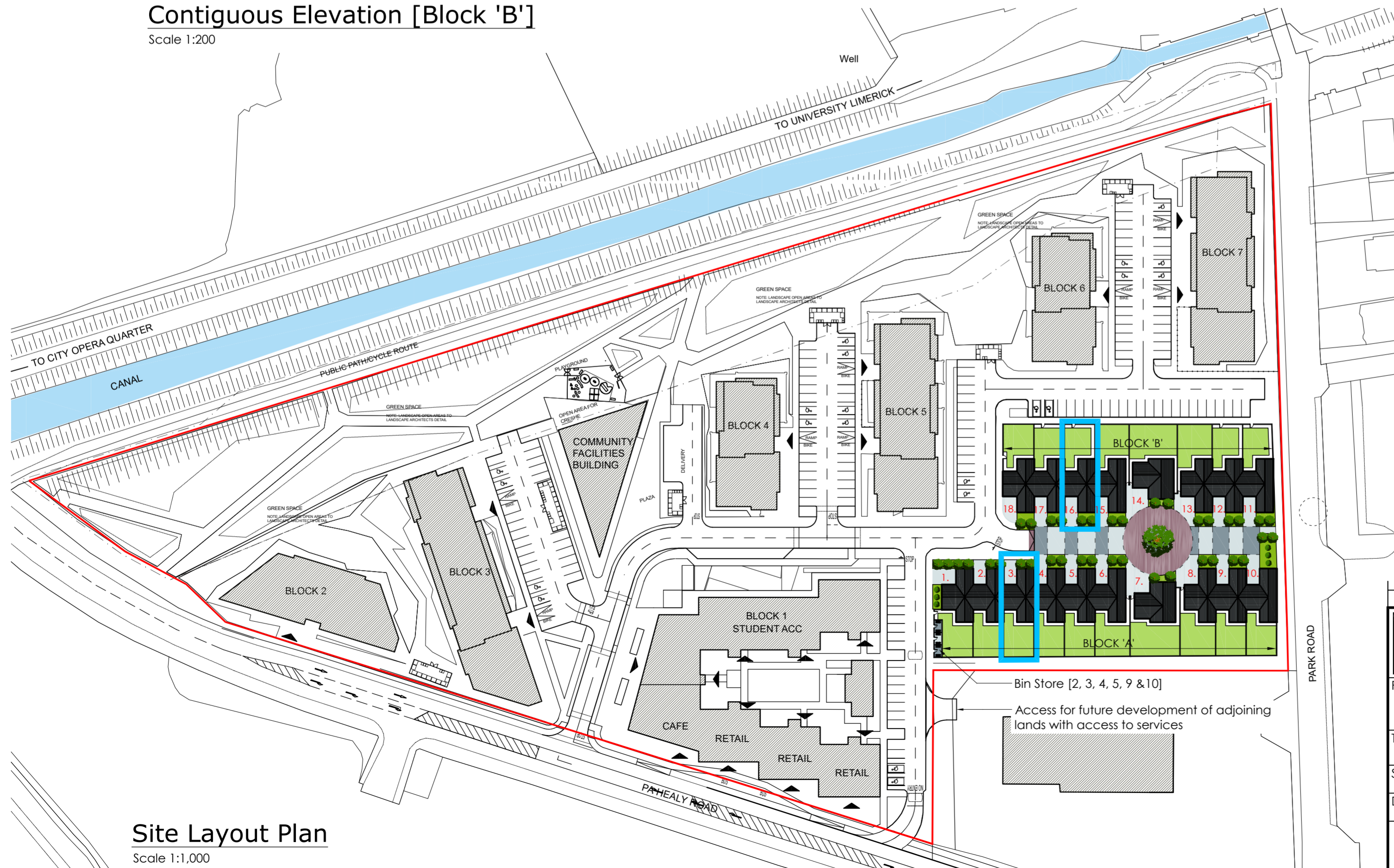
Contiguous Elevation [Block 'A']

Scale 1:200



Contiguous Elevation [Block 'B']

Scale 1:200



Part V houses outlined in **blue**:
2 no. 4 Bed Terrace [Nos. 3 & 16] - 177.82 m²

Site Layout Plan

Scale 1:1,000

Revision	Description	Date
1	Proposed development at Canal Bank, Dublin Road, Limerick. For: Revington Developments Ltd.	December 2021
GLEESON MCSWEENEY Practice Member 2021		ARCHITECTS
Project: Proposed development at Canal Bank, Dublin Road, Limerick. For: Revington Developments Ltd.		Stage: Planning
Title: Site Layout Plan & Contiguous Elevations		
Scale: As indicated @A2	Date: December 2021	Drg No. 1811-10-200
Drawn: M.M.	Rev:	99 O'Connell St., Limerick info@gleesonmcsweeney.ie
T 061 412277 E info@gleesonmcsweeney.ie		