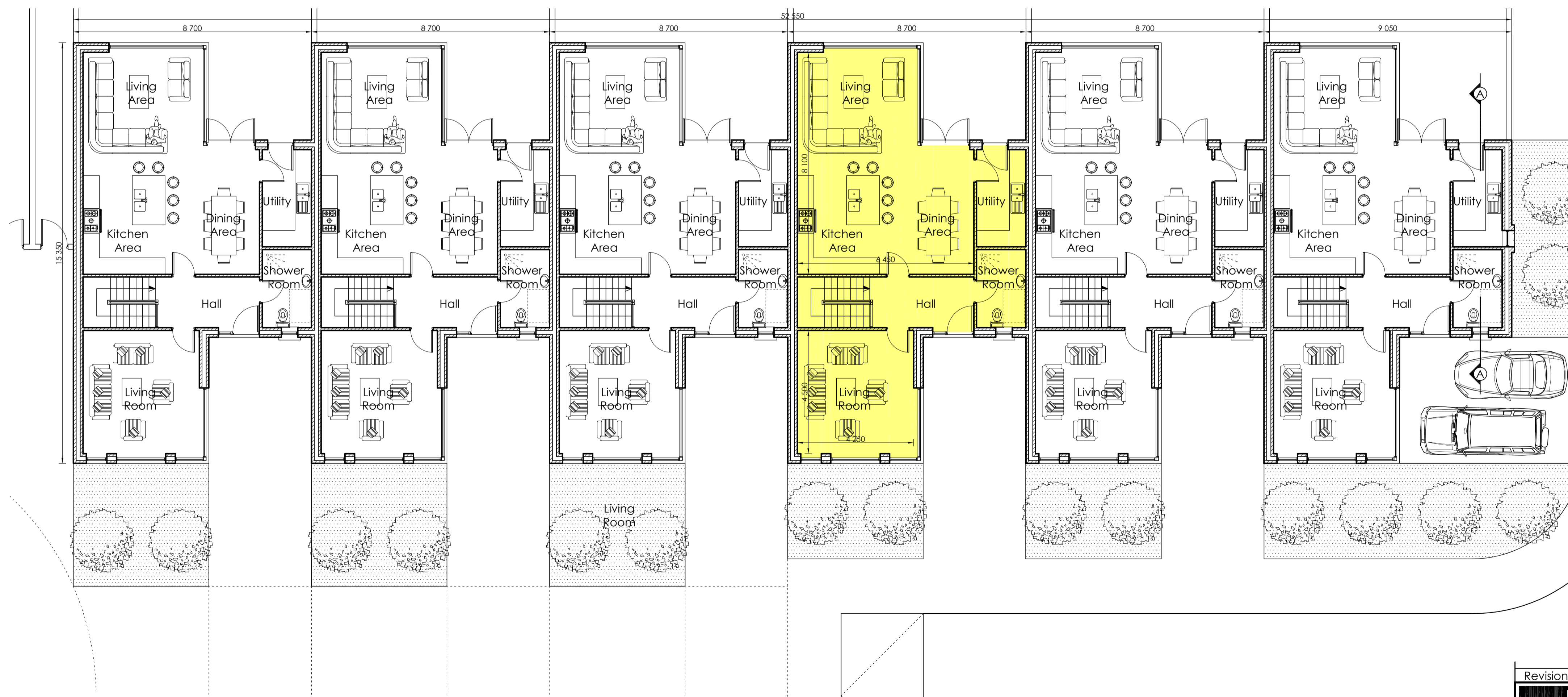


First Floor Plan

Scale 1:100



Ground Floor Plan

Scale 1:100

Part V Compliance

Revision	Description	Date
1	Proposed development at Canal Bank, Dublin Road, Limerick. For: Revington Developments Ltd.	December 2021
GLEESON MCSWEENEY <small>Practice Member 2021</small>		Stage Planning [Floor Area: 177.82 m ²]
Title Terrace of 6 (Nos. 1-6) - Floor Plans		
Scale	As indicated @A1	Rev
Drawn	M.M.	Rev
Title 1811-10-203		Drg No. 1811-10-203
99 O'Connell St., Limerick T 061 412277 E info@gleesonmcsweeney.ie		

ARCHITECTS