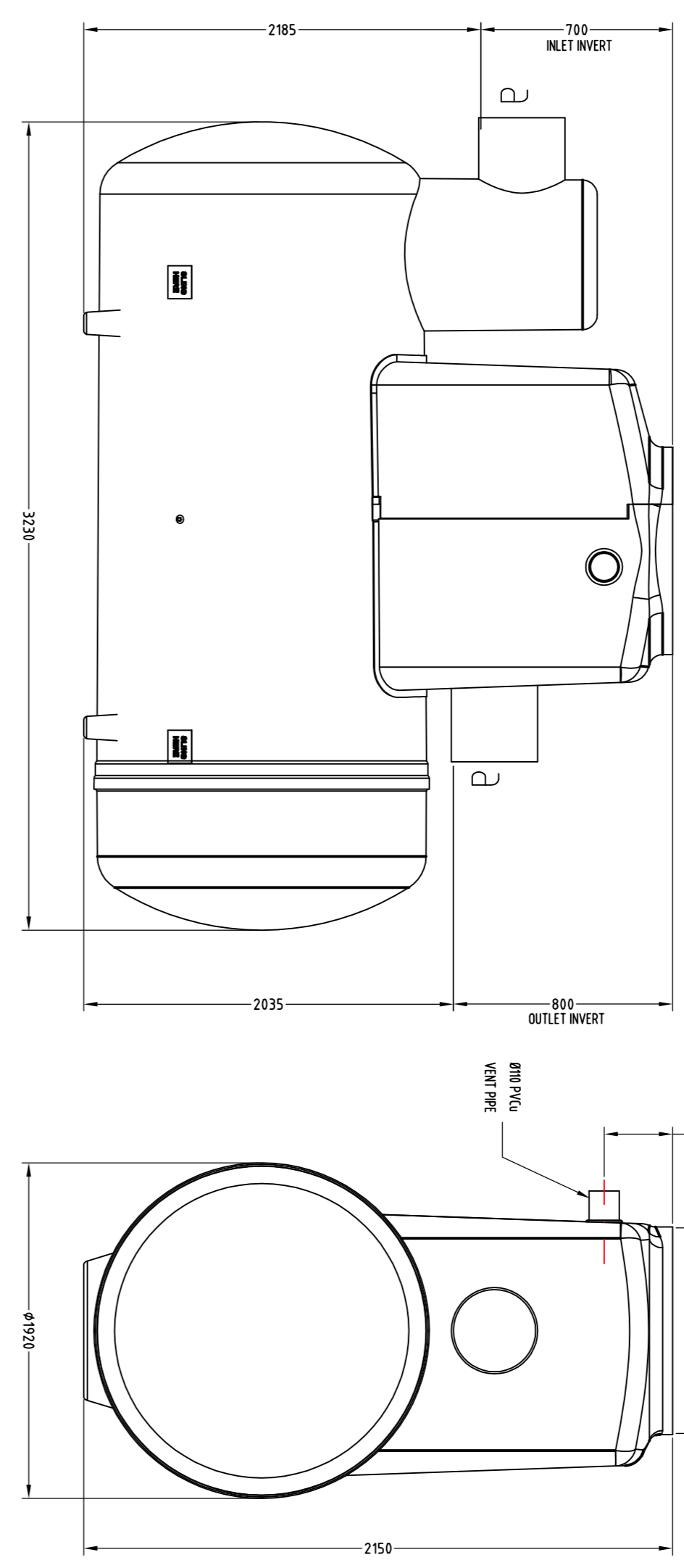
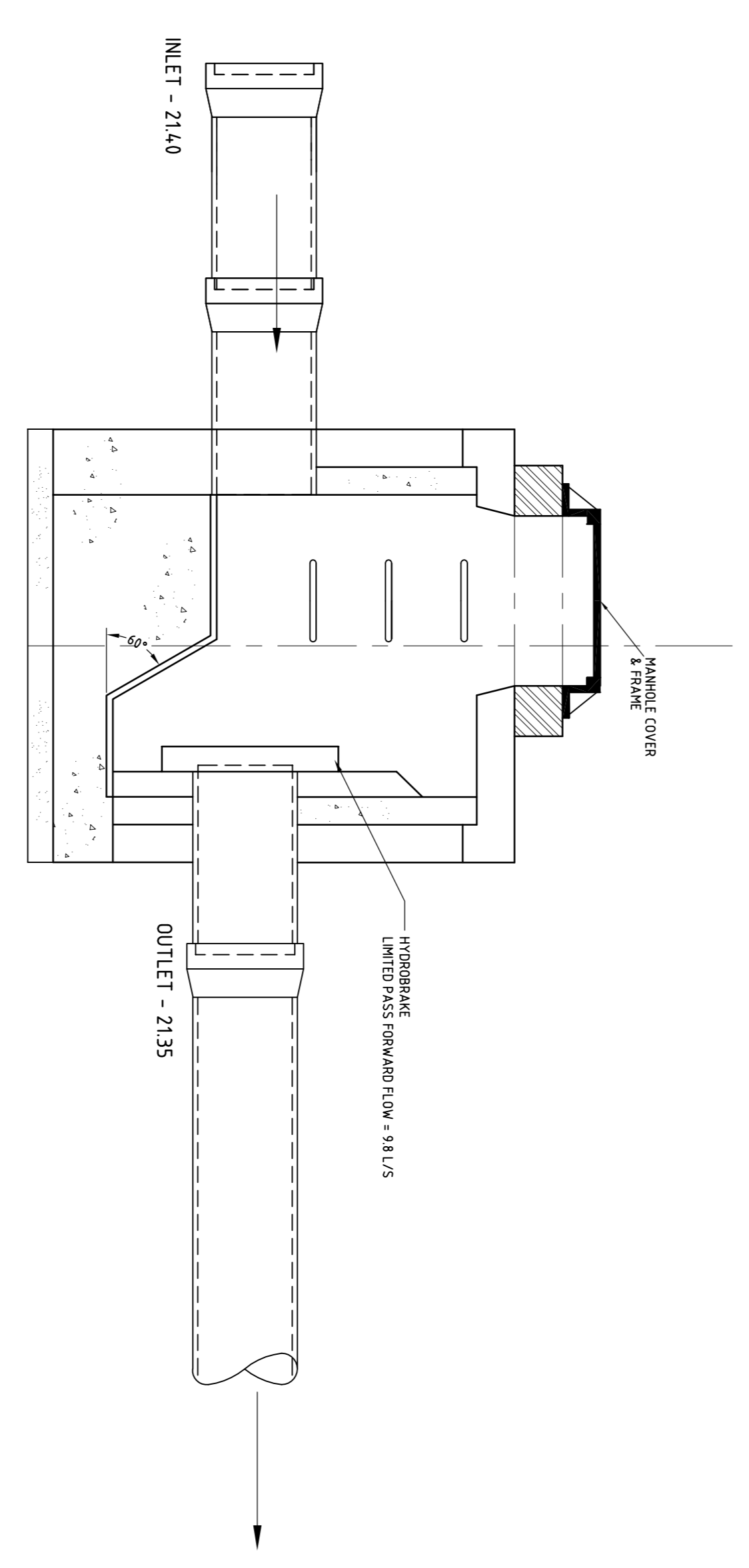


- NOTES
1. UNITS ARE SUPPLIED WITH THE STANDARD MANHOLE PRECISION SIZE, AND ORIENTATION SHOWN ON THE DRAWING. THE STANDARD ENDS 15 STATES MINIMUM CONNECTION SIZE. UNITS ORDERED WITH DIFFERENT SIZE CONNECTIONS MAY NOT BE FULLY COMPLIANT WITH THE STANDARD PLEASE CHECK OUR SALES REPRESENTATIVE FOR DETAILS OF CONNECTIONS, BUT PLEASE NOTE WE DO NOT ALTER INTERNALS.
 2. ALL UNITS SHIPPED ARE CLASS 1 AND INCLUDE A COLLASER ASSEMBLY.
 3. ALL UNITS REQUIRE APPROPRIATE CONCRETE BASE, COVER AND FRAME TO SUIT APPLIED LOADINGS.
 4. THIS DRAWING SHOULD BE USED FOR DIMENSIONAL INFORMATION ONLY.
 5. A FRAME TYPE IS SPECIFIED TO HOUSE AN OR ALUMINUM FRAME.



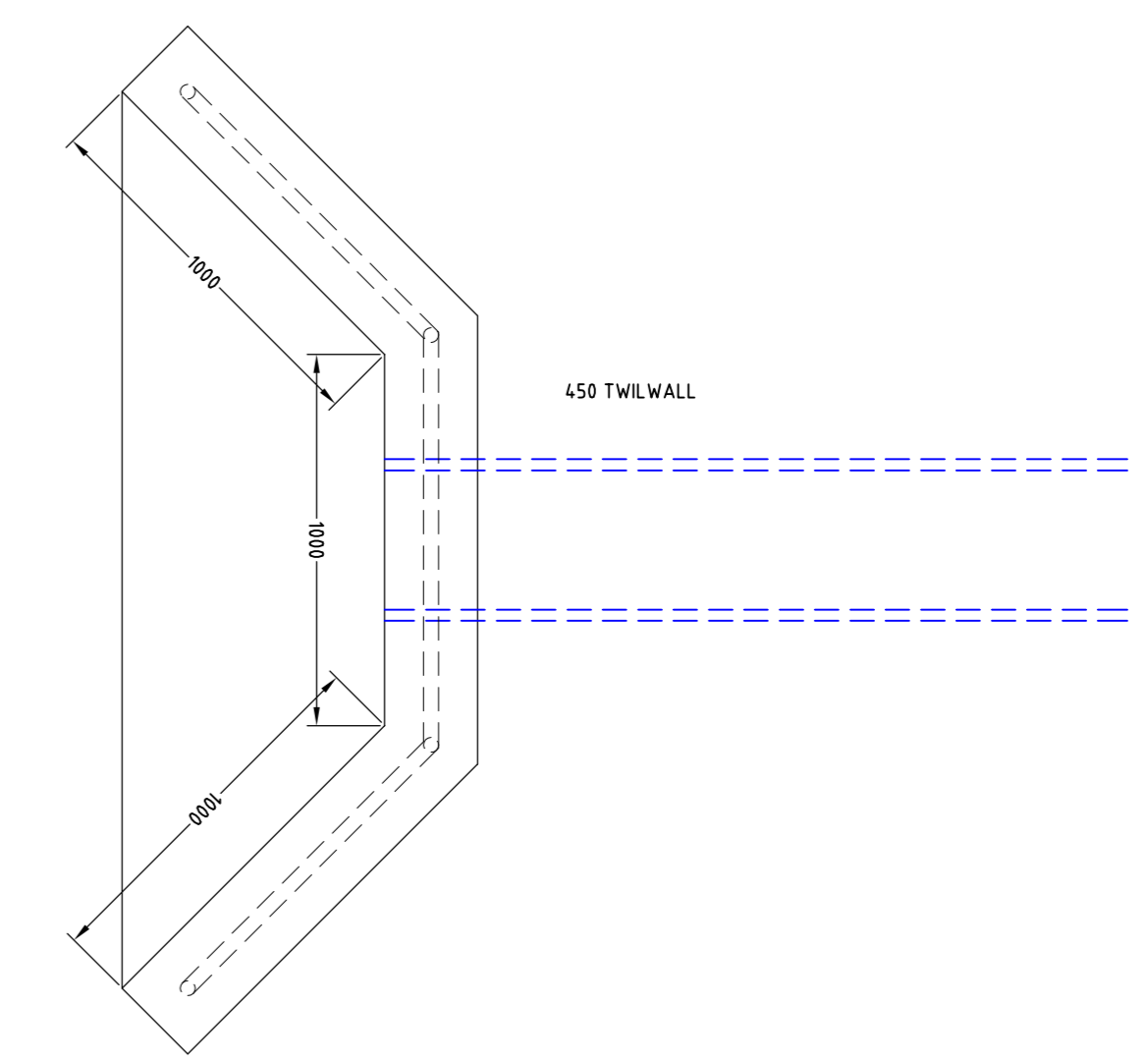
UNIT	NOMINAL RISE (MM)	STAIN RISE (MM)	BRANCHED RISE (MM)	SET STORAGE RISE (MM)	NO STORAGE RISE (MM)	UNIT LENGTH (MM)	UNIT DIAMETER (MM)	STD PIPE FALL (MM)	FALL (MM)
WATERMAN	45	400	2222	400	400	330	700	315	50

SCALE 1:10

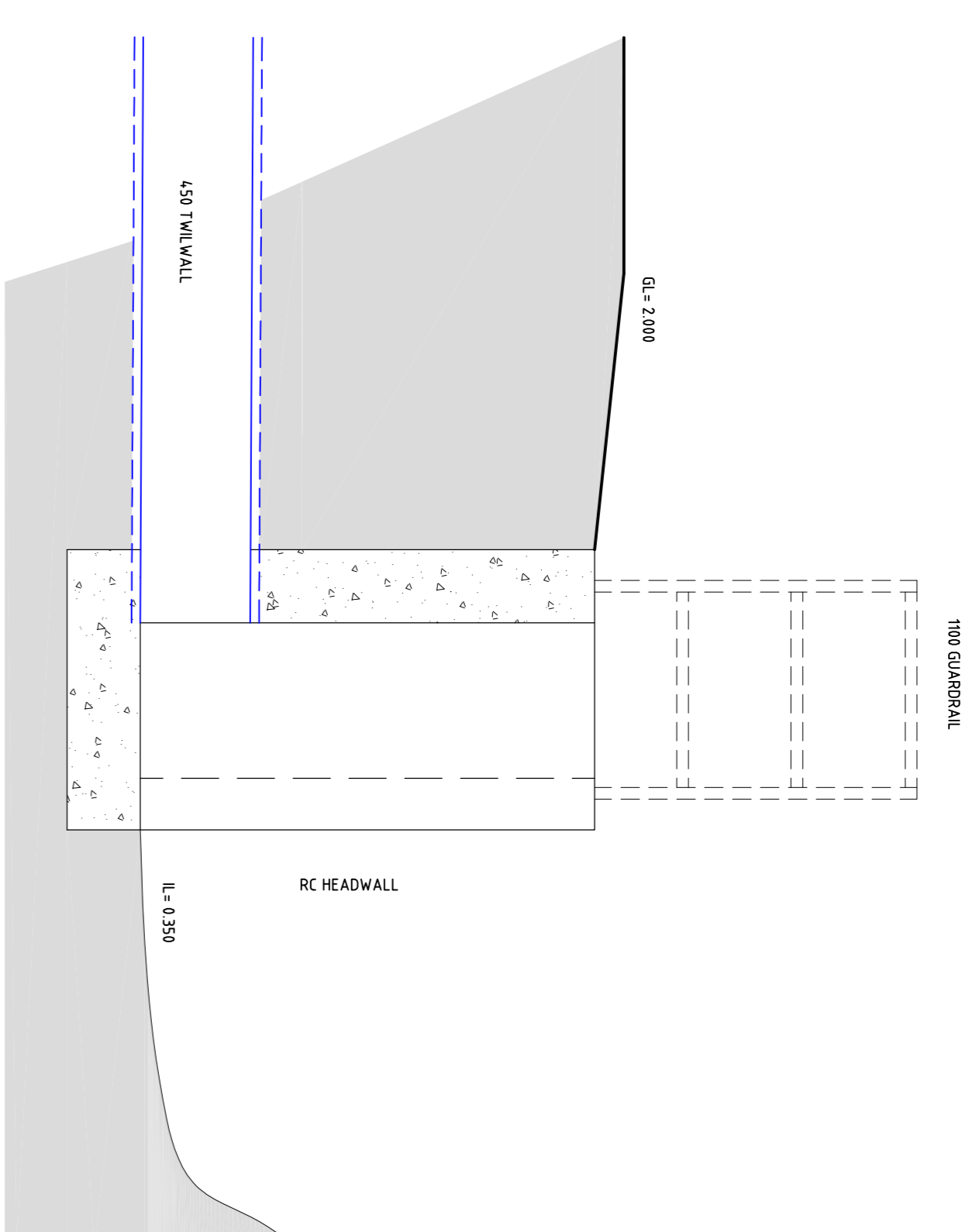


HYDROBRAKE MANHOLE
HYDROBRAKE FITTED IN PRECAST MANHOLE AS PER MANUFACTURERS SPECIFICATION.

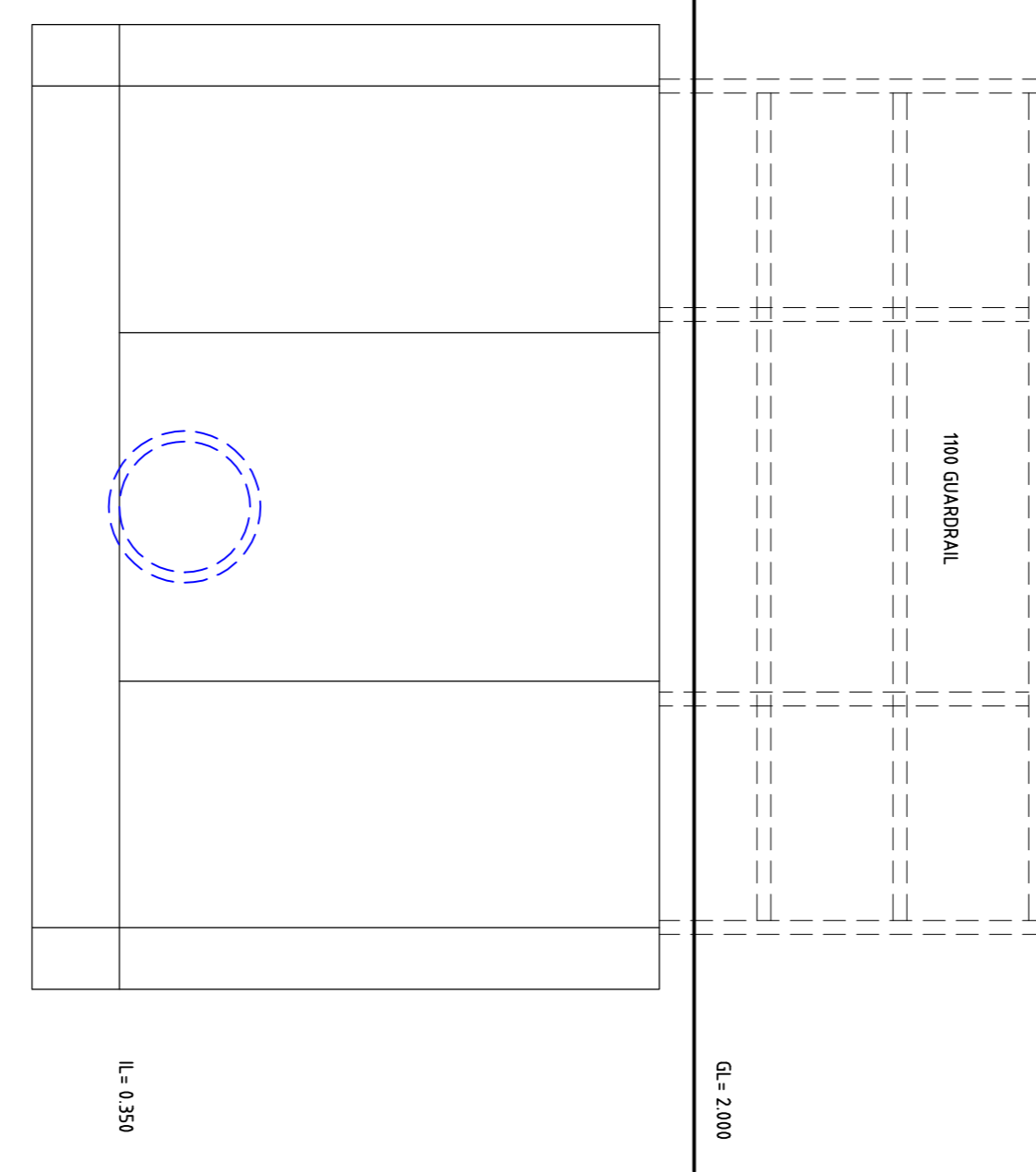
NOT TO BE USED FOR CONSTRUCTION



PLAN

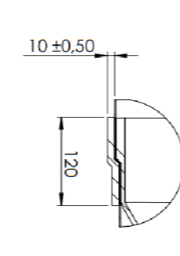
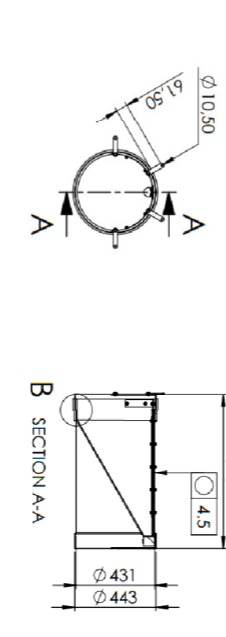


SECTION



ELEVATION

WasTop DN450 INLINE CHECK VALVE



- THIS DRAWING IS COPYRIGHT - ELECTRONIC DRAWING FILE
- NOTES:
- ROADS LEGEND**
- PROPOSED KERB LINE
 - PROPOSED CENTRE LINE
 - PROPOSED SIGHT LINE
 - PROPOSED ROAD NO
 - PROPOSED ROAD LEVEL
 - PROPOSED FINISHED FLOOR LEVEL
 - CENTRELINE CHANGING
 - DROPPED KERBS
 - TACTILE PAVING AT CROSSINGS
 - GREY OF BUFF BUSTLE
- DRAINAGE LEGEND**
- PROPOSED FOLL SEWER & MANHOLE
 - PROPOSED STORM SEWER & MANHOLE
 - PROPOSED COMBINED SEWER & MANHOLE
 - PROPOSED ROAD GULLY
 - EXISTING FOLL SEWER & MANHOLE
 - EXISTING STORM SEWER & MANHOLE
 - EXISTING COMBINED SEWER & MANHOLE
 - LAND DRAIN & CATCHPIT
 - RISING MAIN
 - PRIVATE STORM DRAIN
 - PRIVATE FOLL DRAIN
 - DIRECTION OF FOLL FLOW
 - DIRECTION OF STORM FLOW
- WATERMAIN LEGEND**
- 1200mm NOMINAL BORE PRIVATE WATERMAIN WITH A TALBOT MATRIX BOUNDARY BOX
 - 150mm NOMINAL BORE - F80 SIGHT
 - 150mm NOMINAL BORE - F80 SIGHT EXISTING WATERMAIN
 - SLUICE VALVE
 - FIRE HYDRANT
 - AIR VALVE
 - SCOUR VALVE
- LINE MARKING**
- L1 = 200MM THICK CONTINUOUS WHITE (RBM 011)
 - L2 = 100MM THICK CONTINUOUS WHITE (RBM 001)
 - L3 = 100MM THICK DOUBLE CONTINUOUS YELLOW (RBM 020)
 - STOP MARKING (M 114)
 - STOP SIGN (RUS 027)
1. ALL INLET DRAINS TO BE 100mm
 2. LOCAL DRAINS TO RUN AT A GRADIENT OF 1:40 UNLESS OTHERWISE NOTED
 3. DOUBLE GULLIES TO BE PROVIDED AT ALL ROAD SAUG CURVES & TOL DE SACS FACILITY AND ALL OTHER LOCATIONS AS SHOWN ON THIS DRAWING
 4. HOUSE BRANS SHALL NOT PASS THROUGH A PROPERTY THEY DO NOT SERVE
 5. FIRE SEWER LINE SECTIONS SEE DRAWING S 190 SERIES
 6. ALL SEWER LINES TO BE 150mm UNLESS OTHERWISE NOTED
 7. F80 DRAINAGE CONSTRUCTION DETAILS SEE DRG'S 460 SERIES
 8. F80 WATERMAIN CONSTRUCTION DETAILS SEE DRG'S 110 SERIES
- ALL MARKINGS AND SIGNS TO BE IN ACCORDANCE WITH D07 TRAFFIC SIGNS MANUALS CHAPTERS 5, 7 & 10.

PHM consulting
Civil - Structural - Environmental
11 Wilford Street Limerick Ireland N94, W91A4
Tel: +353 (0)61 572620 Email: info@phm.ie Web: www.phm.ie

Revington Developments Ltd.

REV	DATE	DESCRIPTION	BY/CHKD/APPD

Client: **Revington Developments Ltd.**

Project Number: **109-96**

Scale: **AS SHOWN**

Drawn: **FOR**

Checked: **FOR**

Issue: **FOR**

Approved: **FOR**

Date: **10/2/2021**

Drawing Number: **403**

Sheet: **PLANNING 01**

Page: **A1**

PROPOSED RESIDENTIAL DEVELOPMENT AT PA HEALY ROAD, LIMERICK DRAINAGE DETAILS SHEET 2 OF 2