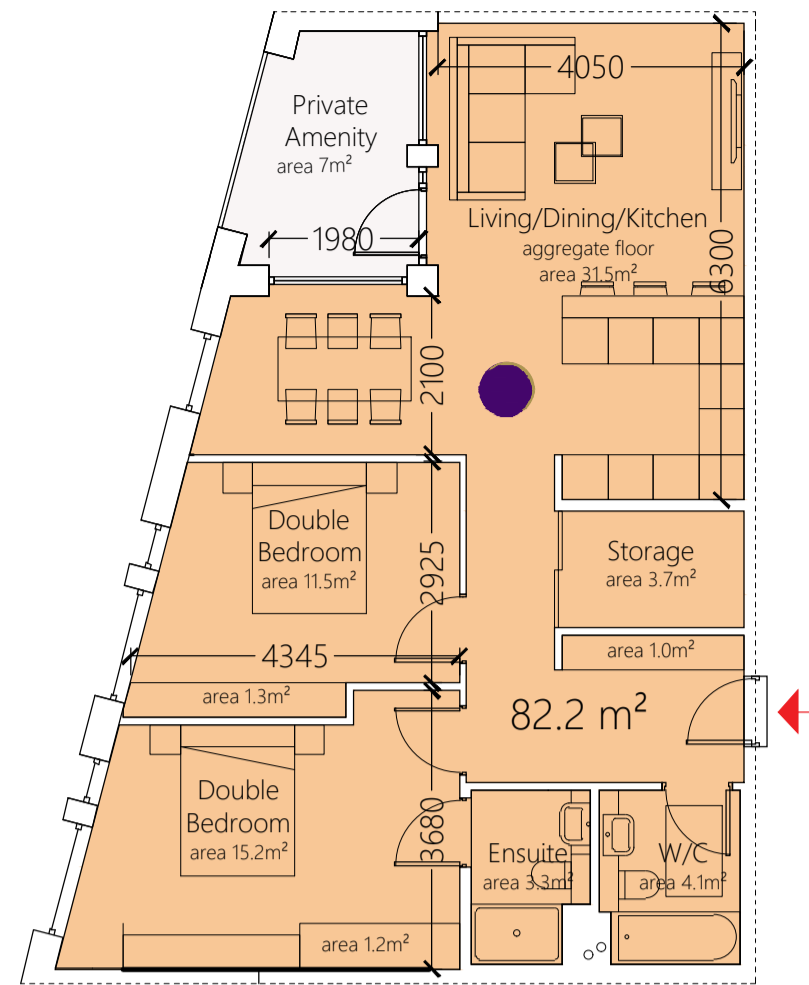
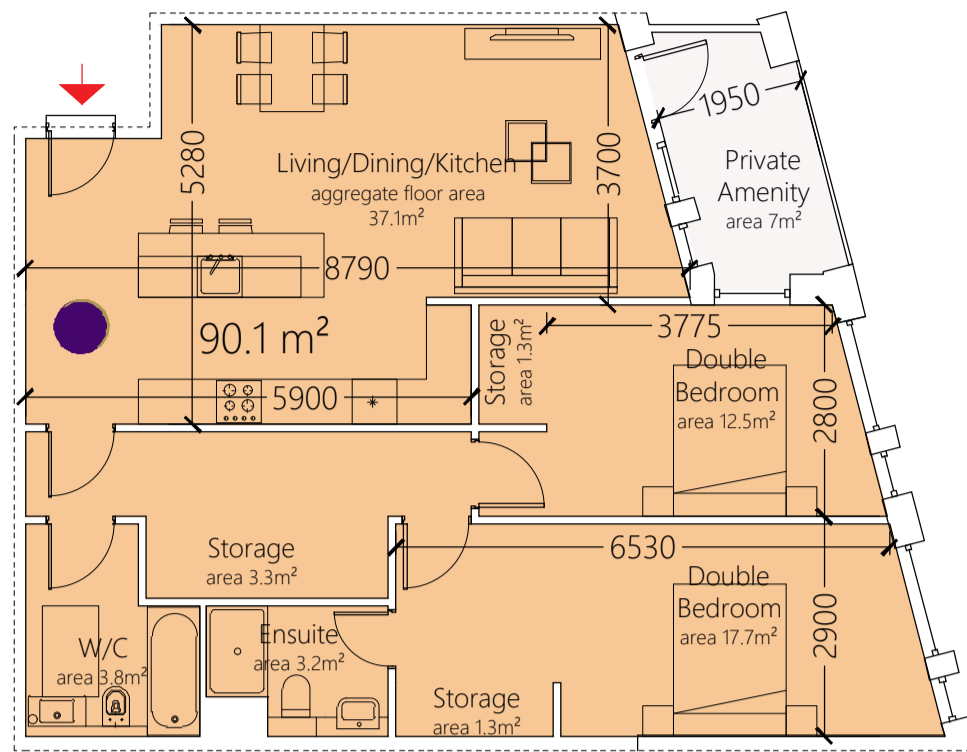


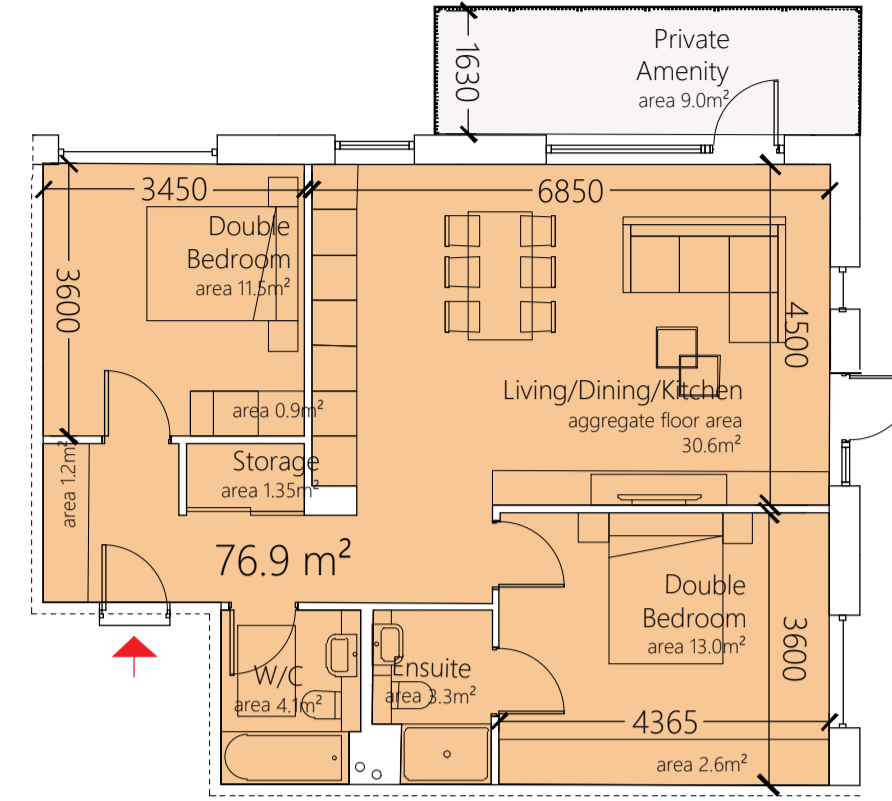
2B4P o
area: 81.5m²
number of instances: 1
example unit: A.5.52



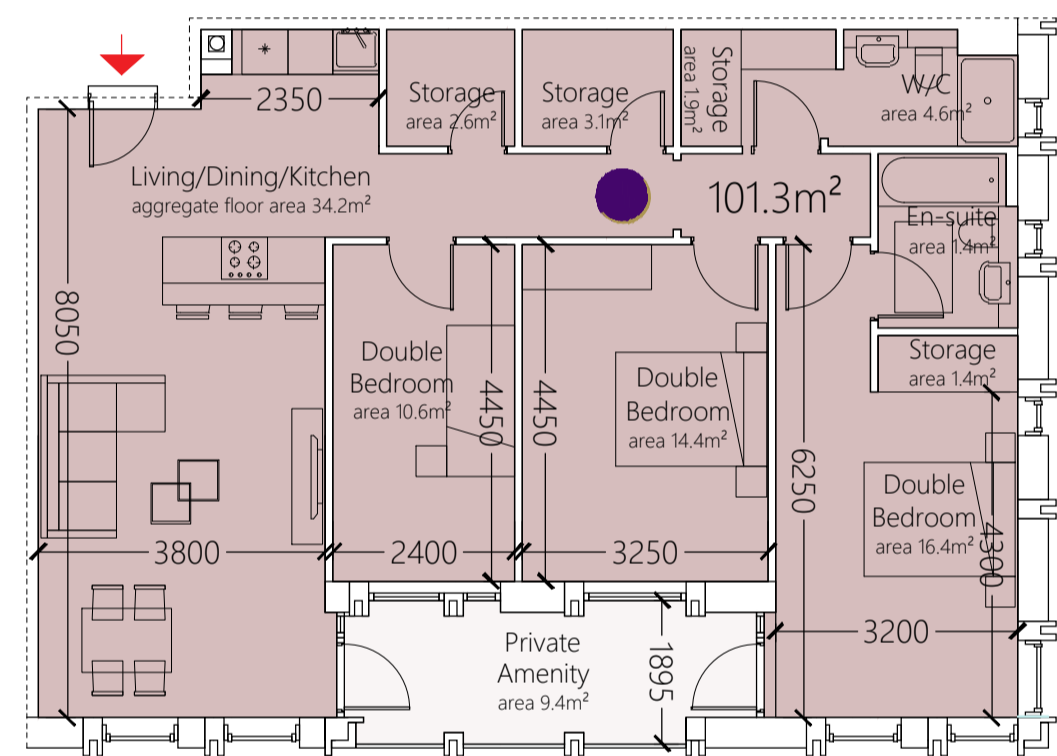
2B4P p
area: 82.2m²
number of instances: 11
example unit: C.1.4



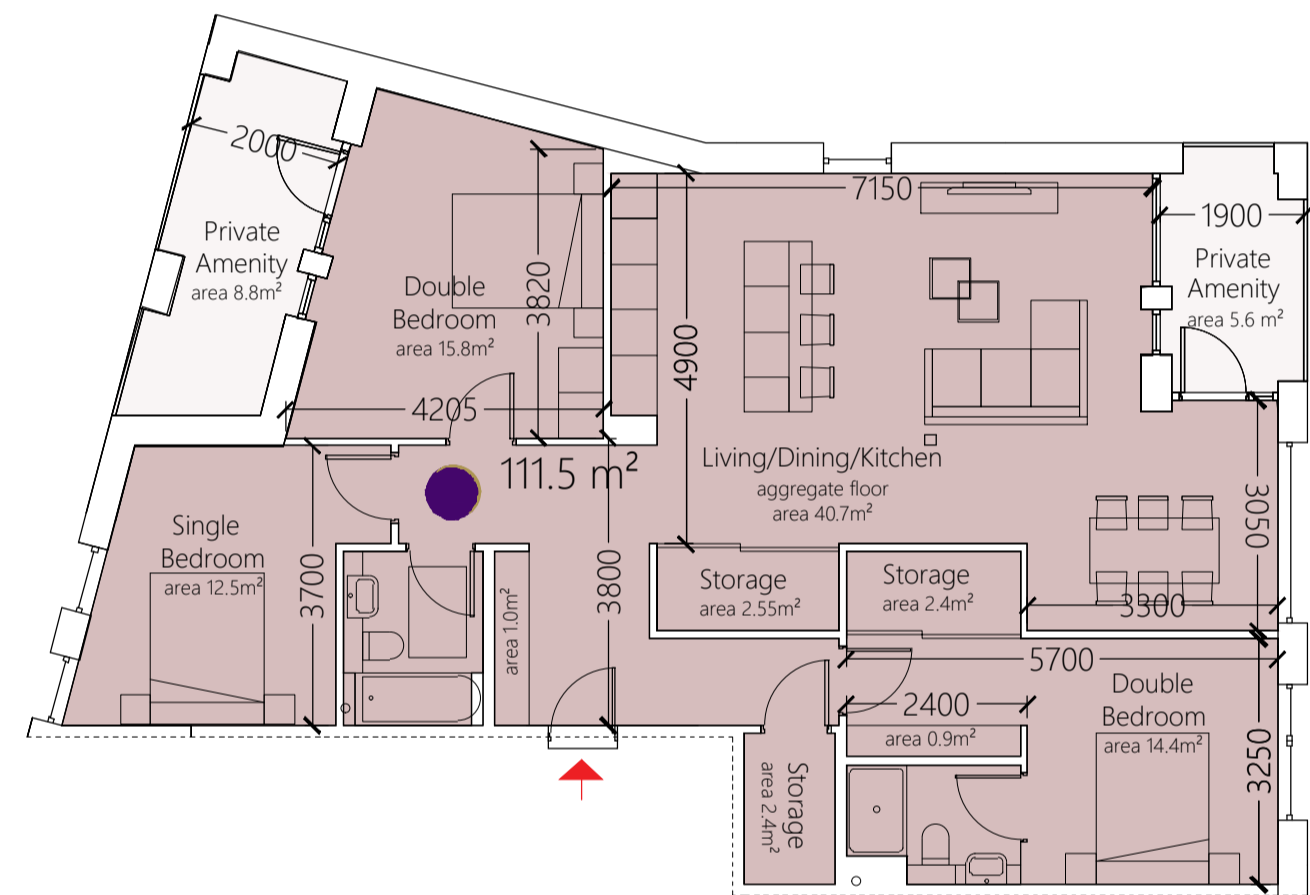
2B4P q
area: 90.1m²
number of instances: 10
example unit: B.0.6



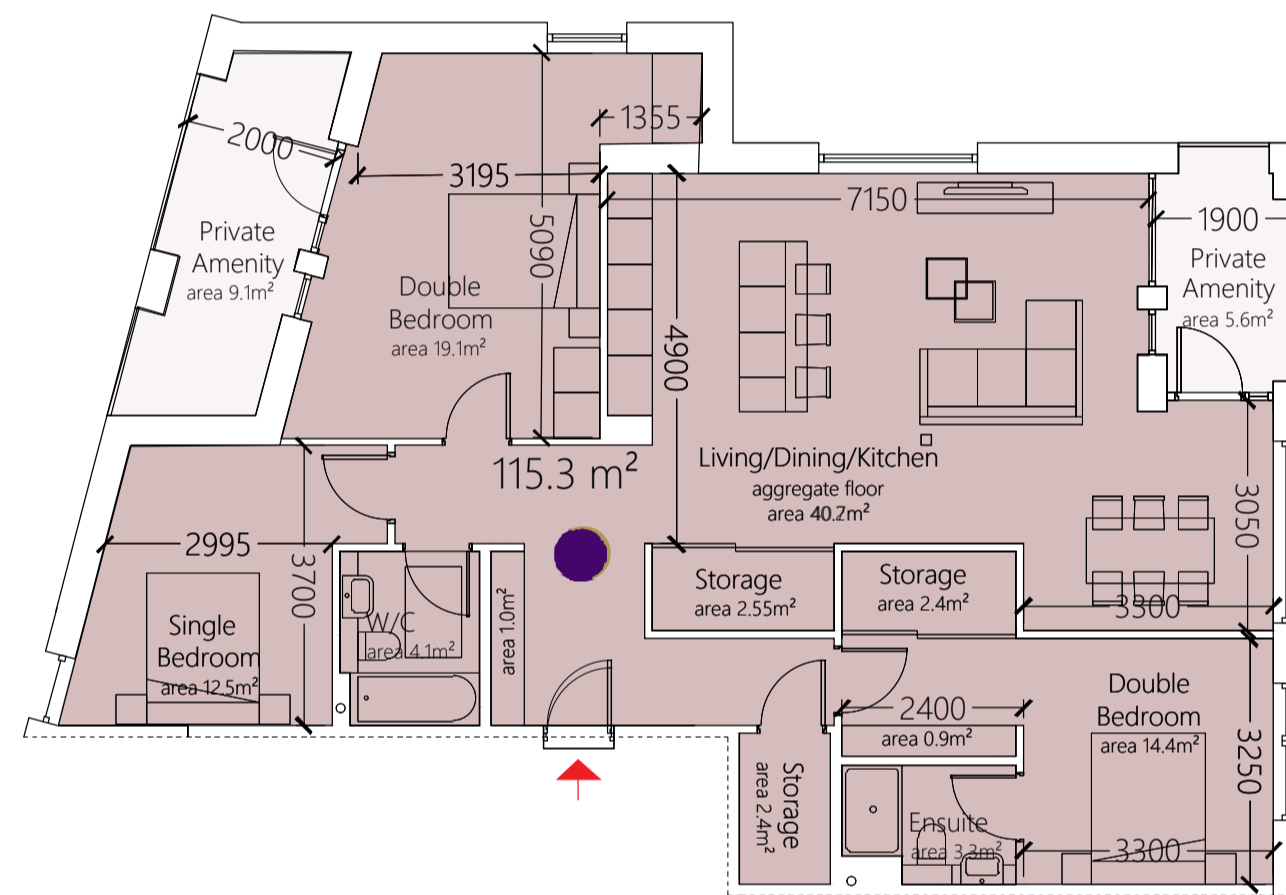
2B4P r
area: 76.9m²
number of instances: 5
example unit: B.0.6



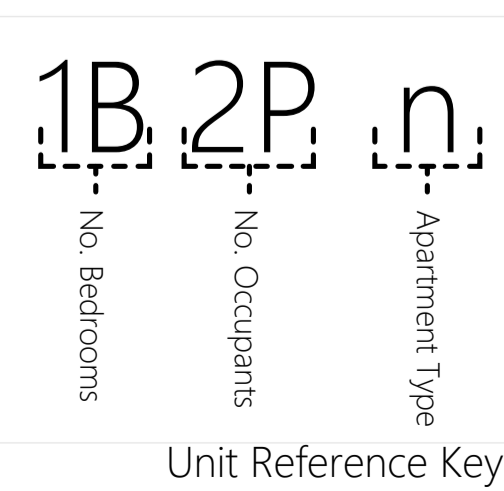
3B5P a
area: 101.3m²
number of instances: 1
example unit: A.5.51



3B5P b
area: 111.5m²
number of instances: 8
example unit: C.1.5



3B5P c
area: 115.3m²
number of instances: 3
example unit: D.0.1



- Studio Apartment
- 1 Bedroom Apartment
- 2 Bedroom Apartment
- 3 Bedroom Apartment

Apartment area 10% over minimum required area

1:100 A1