
ATTACHMENT 8.3
- PHOTO LOG -

ENVIRONMENTAL IMPACT ASSESSMENT REPORT

DAWN MEATS (SLANE), GREENHILLS, BEAUPARC, NAVAN, CO. MEATH



Plate 1: River Boyne and River Blackwater SAC and SPA



Plate 2: View towards discharge location



Plate 3: River Boyne (FW2) habitat



Plate 4: River Boyne at dusk, bats are active here

Notes:

ATTACHMENT PHOTO LOG



UNITS 3 & 4
INNOVATION
CENTRE
GREEN ROAD
CARLOW, IRELAND
R93 W248

TELEPHONE: 059 91 34222
MOBILE: 087 851 9284
EMAIL: info@pantherwms.com
WEB: www.pantherwms.com

file	location:	scale:	N/A	A4
drawing	status:	REPORT	datum:	N/A
			drawn:	PES
drawing no.	rev	checked:	MF	
EIAR_21094	A	approved:	-	
		date:	30/09/2021	

©This drawing or its contents must not be reproduced for any purpose without written permission. It is to be used only for the purpose for which it is supplied.

ENVIRONMENTAL IMPACT ASSESSMENT REPORT

DAWN MEATS (SLANE), GREENHILLS, BEAUPARC, NAVAN, CO. MEATH



Plate 5: Dollardstown Stream just before confluence with Boyne



Plate 6: Dollardstown Stream at railway bridge



Plate 7: Dollardstown Stream (FL1) habitat



Plate 8: River Boyne in flood

Notes:

ATTACHMENT PHOTO LOG



UNITS 3 & 4
INNOVATION
CENTRE
GREEN ROAD
CARLOW, IRELAND
R93 W248

TELEPHONE: 059 91 34222
MOBILE: 087 851 9284
EMAIL: info@pantherwms.com
WEB: www.pantherwms.com

file	location:	scale:	N/A	A4
drawing	status:	REPORT	datum:	N/A
			drawn:	PES
drawing no.	rev		checked:	MF
EIAR_21094	A		approved:	-
			date:	30/09/2021

©This drawing or its contents must not be reproduced for any purpose without written permission. It is to be used only for the purpose for which it is supplied.

ENVIRONMENTAL IMPACT ASSESSMENT REPORT

DAWN MEATS (SLANE), GREENHILLS, BEAUPARC, NAVAN, CO. MEATH



Plate 9: GA1 habitat at Dawn Meats



Plate 10: Dry meadows and grassy verges (GS2) habitat



Plate 11: Amenity grassland (GA2) habitat



Plate 12: GA2 and WL1 habitats

Notes:

ATTACHMENT PHOTO LOG



UNITS 3 & 4
INNOVATION
CENTRE
GREEN ROAD
CARLOW, IRELAND
R93 W248

TELEPHONE: 059 91 34222
MOBILE: 087 851 9284
EMAIL: info@pantherwms.com
WEB: www.pantherwms.com

file	location:	scale:	N/A	A4
drawing	status:	REPORT	datum:	N/A
drawing no.	rev	checked:	drawn:	PES
EIAR_21094	A	MF	approved:	-
		date:		30/09/2021

©This drawing or its contents must not be reproduced for any purpose without written permission. It is to be used only for the purpose for which it is supplied.

ENVIRONMENTAL IMPACT ASSESSMENT REPORT

DAWN MEATS (SLANE), GREENHILLS, BEAUPARC, NAVAN, CO. MEATH



Plate 13: Boyne Woods pNHA beside proposed route

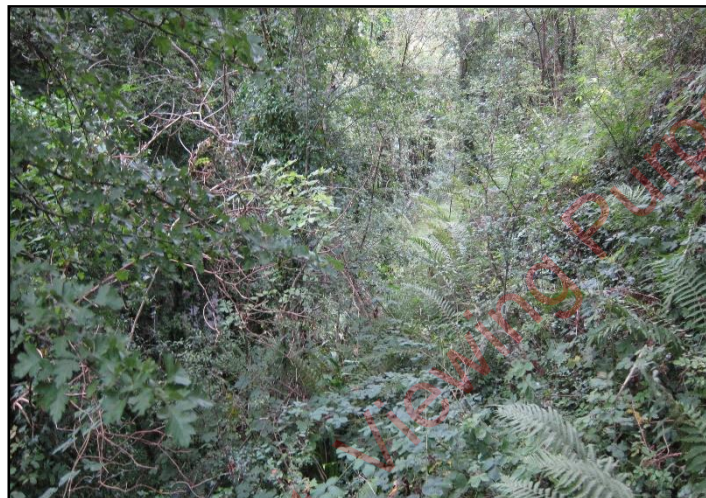


Plate 14: Mixed broadleaved/conifer (WD2) habitat



Plate 15: Yellow Furze village with (BL3) habitat



Plate 16: Drainage ditches (FW4) habitat (winter)

Notes:

ATTACHMENT PHOTO LOG



UNITS 3 & 4
INNOVATION
CENTRE
GREEN ROAD
CARLOW, IRELAND
R93 W248

TELEPHONE: 059 91 34222
MOBILE: 087 851 9284
EMAIL: info@pantherwms.com
WEB: www.pantherwms.com

file location:	scale:	N/A	A4
drawing status:	REPORT	datum:	N/A
		drawn:	PES
drawing no.	rev	checked:	MF
EIAR_21094	A	approved:	-
		date:	30/09/2021

©This drawing or its contents must not be reproduced for any purpose without written permission. It is to be used only for the purpose for which it is supplied.

ENVIRONMENTAL IMPACT ASSESSMENT REPORT

DAWN MEATS (SLANE), GREENHILLS, BEAUPARC, NAVAN, CO. MEATH



Plate 17: Hedgerows (WL1) and GA2



Plate 18: Drainage ditches (FW4) habitat (summer)



Plate 19: Hedgerows (WL1) and GA2



Plate 20: The dominant habitat is hedgerow and grassy verges

Notes:

ATTACHMENT PHOTO LOG



UNITS 3 & 4
INNOVATION
CENTRE
GREEN ROAD
CARLOW, IRELAND
R93 W248

TELEPHONE: 059 91 34222
MOBILE: 087 851 9284
EMAIL: info@pantherwms.com
WEB: www.pantherwms.com

file	location:	scale:	N/A	A4
drawing	status:	REPORT	datum:	N/A
			drawn:	PES
drawing no.	rev	checked:	MF	
EIAR_21094	A	approved:	-	
		date:	30/09/2021	

©This drawing or its contents must not be reproduced for any purpose without written permission. It is to be used only for the purpose for which it is supplied.

ENVIRONMENTAL IMPACT ASSESSMENT REPORT

DAWN MEATS (SLANE), GREENHILLS, BEAUPARC, NAVAN, CO. MEATH



Plate 21: Recolonising bare ground (ED3) habitat at Dawn Meats



Plate 22: Earth banks (BL2) habitat



Plate 23: Treelines (WL2) habitat

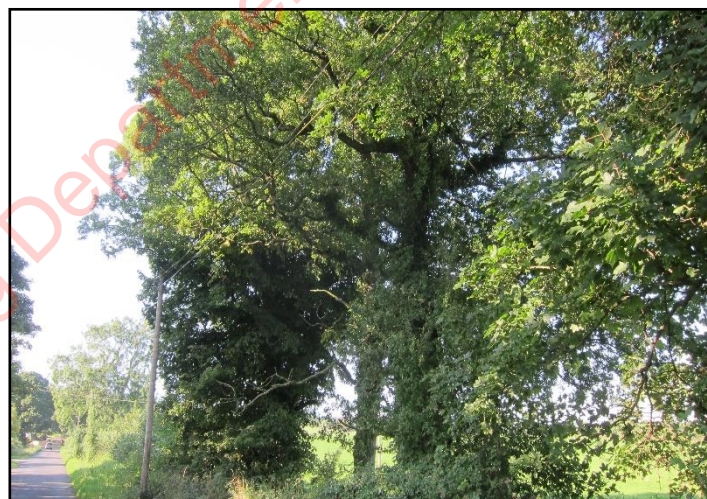


Plate 24: Treelines (WL2) habitat

Notes:

ATTACHMENT PHOTO LOG



UNITS 3 & 4
INNOVATION
CENTRE
GREEN ROAD
CARLOW, IRELAND
R93 W248

TELEPHONE: 059 91 34222
MOBILE: 087 851 9284
EMAIL: info@pantherwms.com
WEB: www.pantherwms.com

file location:	scale:	N/A	A4
drawing status:	REPORT	datum:	N/A
		drawn:	PES
drawing no.	rev	checked:	MF
EIAR_21094	A	approved:	-
		date:	30/09/2021

©This drawing or its contents must not be reproduced for any purpose without written permission. It is to be used only for the purpose for which it is supplied.

ENVIRONMENTAL IMPACT ASSESSMENT REPORT

DAWN MEATS (SLANE), GREENHILLS, BEAUPARC, NAVAN, CO. MEATH



Plate 1: Indian Balsam (*Impatiens glandulifera*) (Not at Site)



Plate 2: Indian Balsam (*Impatiens glandulifera*) (Not at Site)



Plate 3: Indian Balsam before flowers develop (Not at Site)



Plate 4: Indian Balsam in winter – plant dies completely (Not at Site)

Notes

Examples of Indian Balsam (*Impatiens glandulifera*) for Identification

PHOTO LOG INVASIVE FLORA ID



UNITS 3 & 4
INNOVATION
CENTRE
GREEN ROAD
CARLOW

TELEPHONE: 059 91 34222
EMAIL: info@pantherwms.com
WEB: www.pantherwms.com

file location:	scale:	N/A	A4
drawing status:	REPORT	datum:	N/A
drawing no.	rev	drawn:	PES
NIS_21225A	A	checked:	MF
		approved:	-
		date:	30/09/2021

©This drawing or its contents must not be reproduced for any purpose without written permission. It is to be used only for the purpose for which it is supplied.