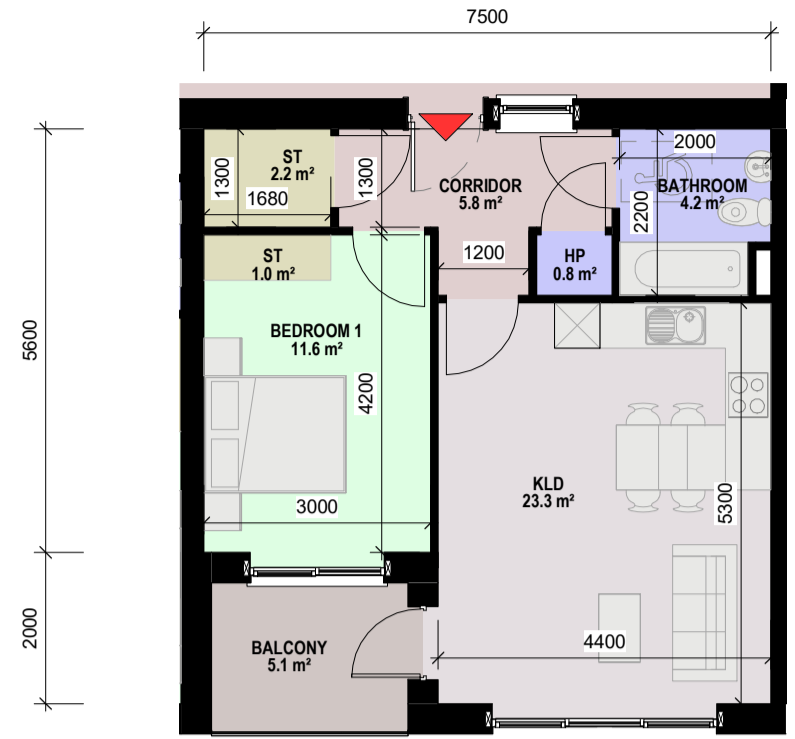


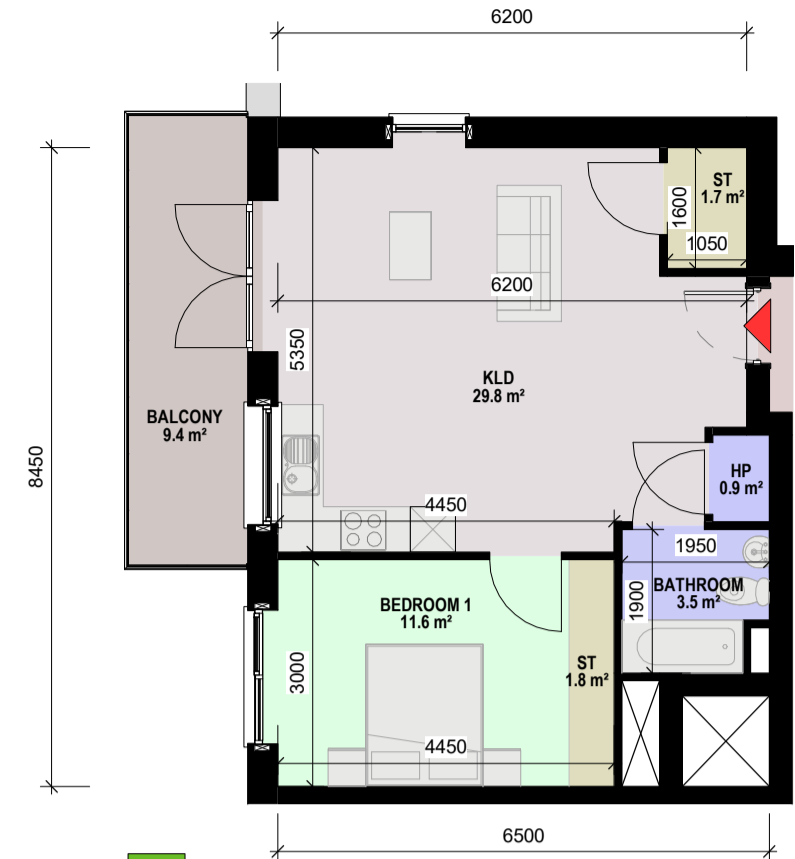
**1** APT A2-7-Floor Plan -1 BED, 2 PERSON APARTMENT  
-NET INTERNAL AREA (NIA)  
Areas Shown In Plan  
-GROSS INTERNAL AREA (GIA) = 54.5m<sup>2</sup>  
1: 100



**2** APT A2-6-Floor Plan -1 BED, 2 PERSON APARTMENT  
-NET INTERNAL AREA (NIA)  
Areas Shown In Plan  
-GROSS INTERNAL AREA (GIA) = 57m<sup>2</sup>  
1: 100



**3** APT A2-9-Floor Plan -1 BED, 2 PERSON APARTMENT  
-NET INTERNAL AREA (NIA)  
Areas Shown In Plan  
-GROSS INTERNAL AREA (GIA) = 50.8m<sup>2</sup>  
1: 100



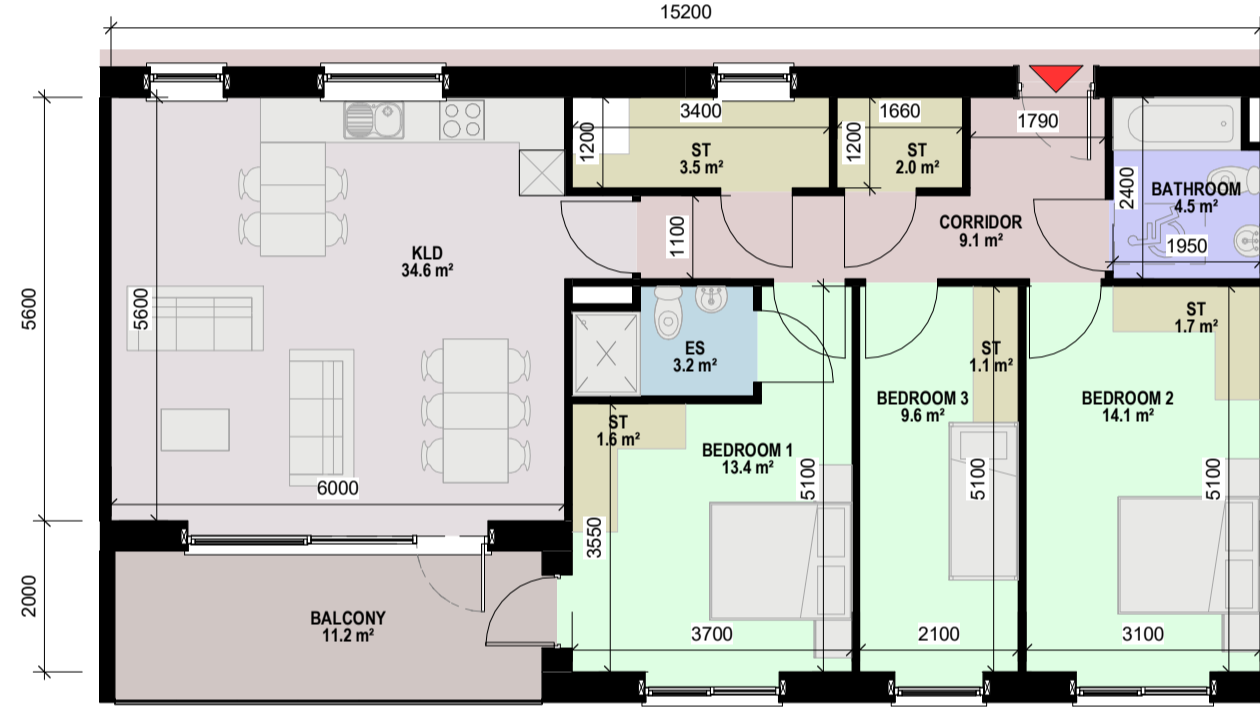
**4** APT A2-11-Floor Plan -1 BED, 2 PERSON APARTMENT  
-NET INTERNAL AREA (NIA)  
Areas Shown In Plan  
-GROSS INTERNAL AREA (GIA) = 50.7m<sup>2</sup>  
1: 100



**5** APT A2-2-Floor Plan -2 BED, 4 PERSON APARTMENT  
-NET INTERNAL AREA (NIA)  
Areas Shown In Plan  
-GROSS INTERNAL AREA (GIA) = 86.3m<sup>2</sup>  
1: 100



**6** APT A2-5-Floor Plan -2 BED, 4 PERSON APARTMENT  
-NET INTERNAL AREA (NIA)  
Areas Shown In Plan  
-GROSS INTERNAL AREA (GIA) = 80.00m<sup>2</sup>  
1: 100



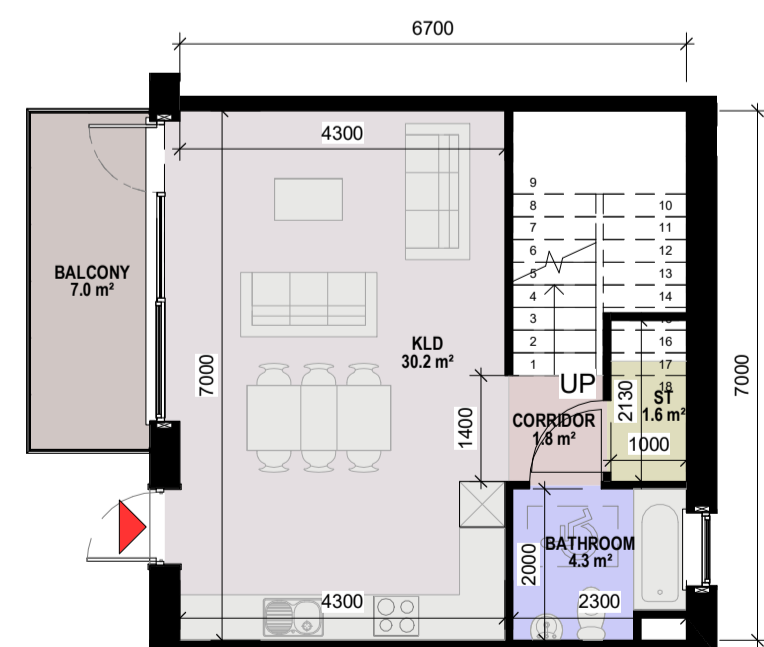
**7** APT A2-10-Floor Plan -2 BED, 4 PERSON APARTMENT  
-NET INTERNAL AREA (NIA)  
Areas Shown In Plan  
-GROSS INTERNAL AREA (GIA) = 103.3m<sup>2</sup>  
1: 100



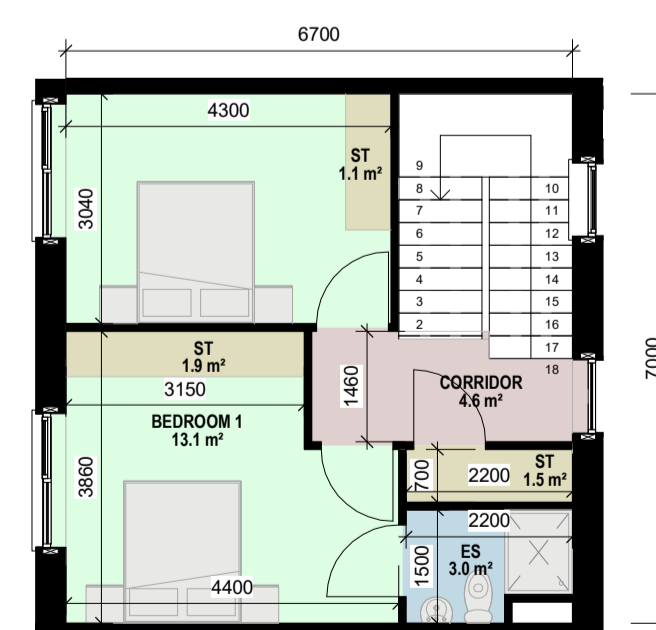
**8** APT A2-8-Floor Plan -2 BED, 4 PERSON APARTMENT  
-NET INTERNAL AREA (NIA)  
Areas Shown In Plan  
-GROSS INTERNAL AREA (GIA) = 82.8m<sup>2</sup>  
1: 100



**9** APT A2-3-Floor Plan -3 BED, 5 PERSON APARTMENT  
-NET INTERNAL AREA (NIA)  
Areas Shown In Plan  
-GROSS INTERNAL AREA (GIA) = 101.9m<sup>2</sup>  
1: 100



**10A** APT A2-1 Lower Floor Plan -2 BED, 4 PERSON DUPLEX APARTMENT  
-NET INTERNAL AREA (NIA)  
Areas Shown In Plan  
-GROSS INTERNAL AREA (GIA) = 93.80m<sup>2</sup>  
1: 100



**10B** APT A2-1 Upper Floor Plan -2 BED, 4 PERSON DUPLEX APARTMENT  
-NET INTERNAL AREA (NIA)  
Areas Shown In Plan  
-GROSS INTERNAL AREA (GIA) = 93.8m<sup>2</sup>  
1: 100



**11** APT A2-4-Floor Plan -3 BED, 5 PERSON APARTMENT  
-NET INTERNAL AREA (NIA)  
Areas Shown In Plan  
-GROSS INTERNAL AREA (GIA) = 102.5m<sup>2</sup>  
1: 100

**By Room Name Legend**

- BALCONY
- BATHROOM
- BEDROOM 1
- BEDROOM 2
- BEDROOM 3
- CORRIDOR
- ES
- KLD
- ST

**Floor Plan Key**

- ES - En suite
- ST - Storage
- KLD - Kitchen/Living/Dining
- AOV - Automatic Opening Vent
- HP - Hot Press

**GENERAL NOTES**

THIS DRAWING TO BE READ IN CONJUNCTION WITH ARCHITECT'S DRAWINGS, CONSULTANT ENGINEER'S DRAWINGS AND SPECIFICATIONS & LANDSCAPE ARCHITECTS DRAWINGS

SOLAR PANEL POSITION DEPENDS ON HOUSE ORIENTATION THE EXACT LOCATION & ORIENTATION WILL BE DEPENDENT ON FINAL BER RATING. SOLAR PANELS MAY BE OMITTED IN FAVOUR OF ALTERNATIVE RENEWABLE ENERGY SOURCE.

CHARACTER AREAS:  
A- BARNHILL STREAM  
B- BARNHILL CROSS  
C- BARNHILL CRESCENT  
D- STATION Q SOUTH

|     |                             |          |    |        |
|-----|-----------------------------|----------|----|--------|
| P03 | Planning Application        | 27/06/22 | CS | DT     |
| P02 | Pre App to An Bord Pleanála | 15/10/21 | CS | DT     |
| P01 | First Issue                 | 01/09/21 | CS | DT     |
| Rev | Description                 | Date     | Dr | App by |

Project Stage

**PLANNING**

Client:  
Alanna Homes and Alcove Ireland Four Ltd.

Project:  
Barnhill Garden Village SHD  
Barberstown, Barnhill and Passyfoycan,  
Clonsilla, Dublin 15.

Drawing Title:  
APARTMENT-2-APARTMENT TYPES

|       |         |            |              |              |
|-------|---------|------------|--------------|--------------|
| Drawn | Checked | Paper Size | Scale        | Date         |
| CS    | AM      | A1         | As indicated | @A1 04/04/22 |

|             |             |          |
|-------------|-------------|----------|
| Project No. | Drawing No. | Revision |
| PE18119     | 03002       | P03      |

File Name  
PE18119-CWO-A2-ZZ-DR-A-03002

Status:  
PLANNING STAGE