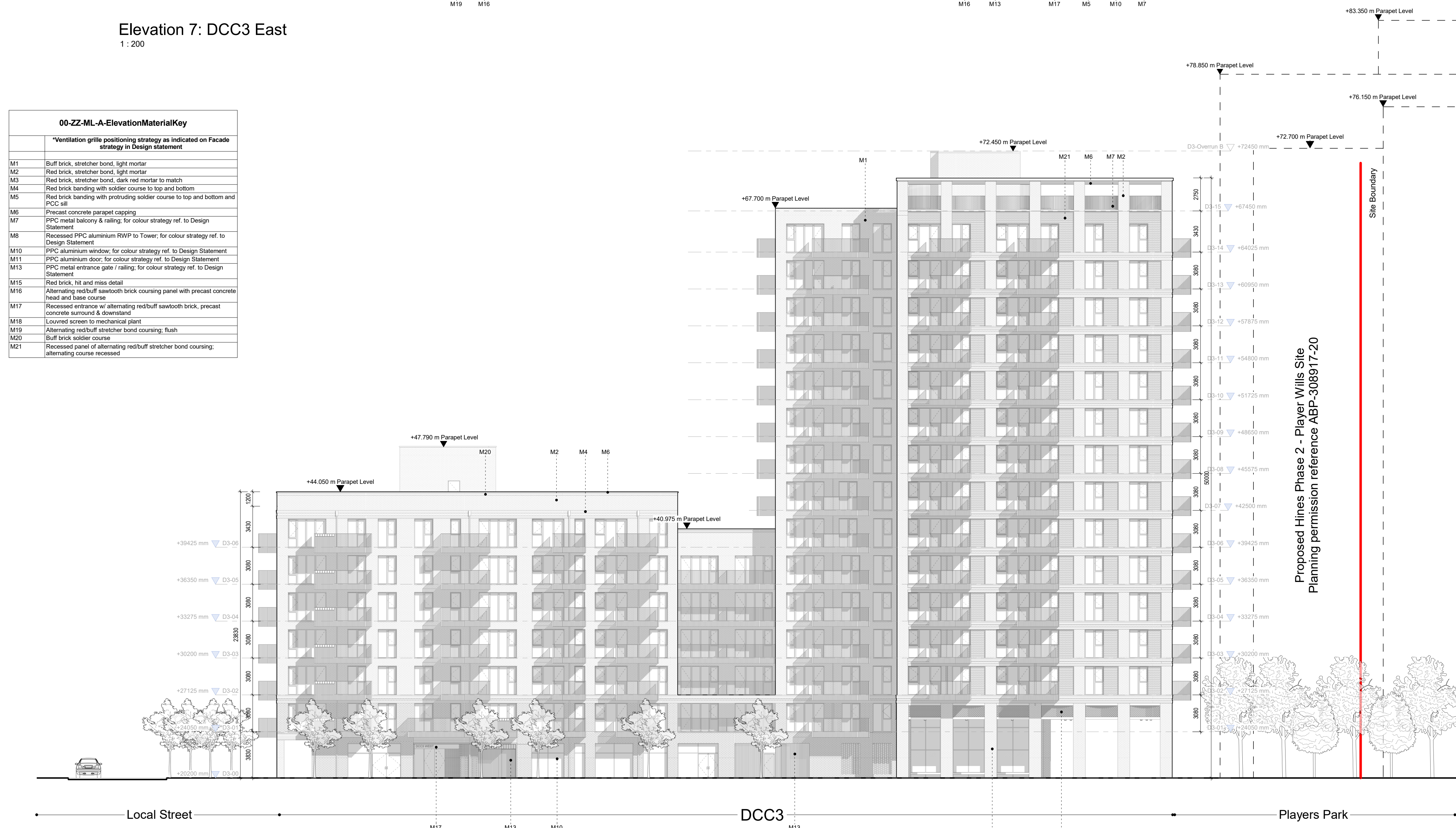


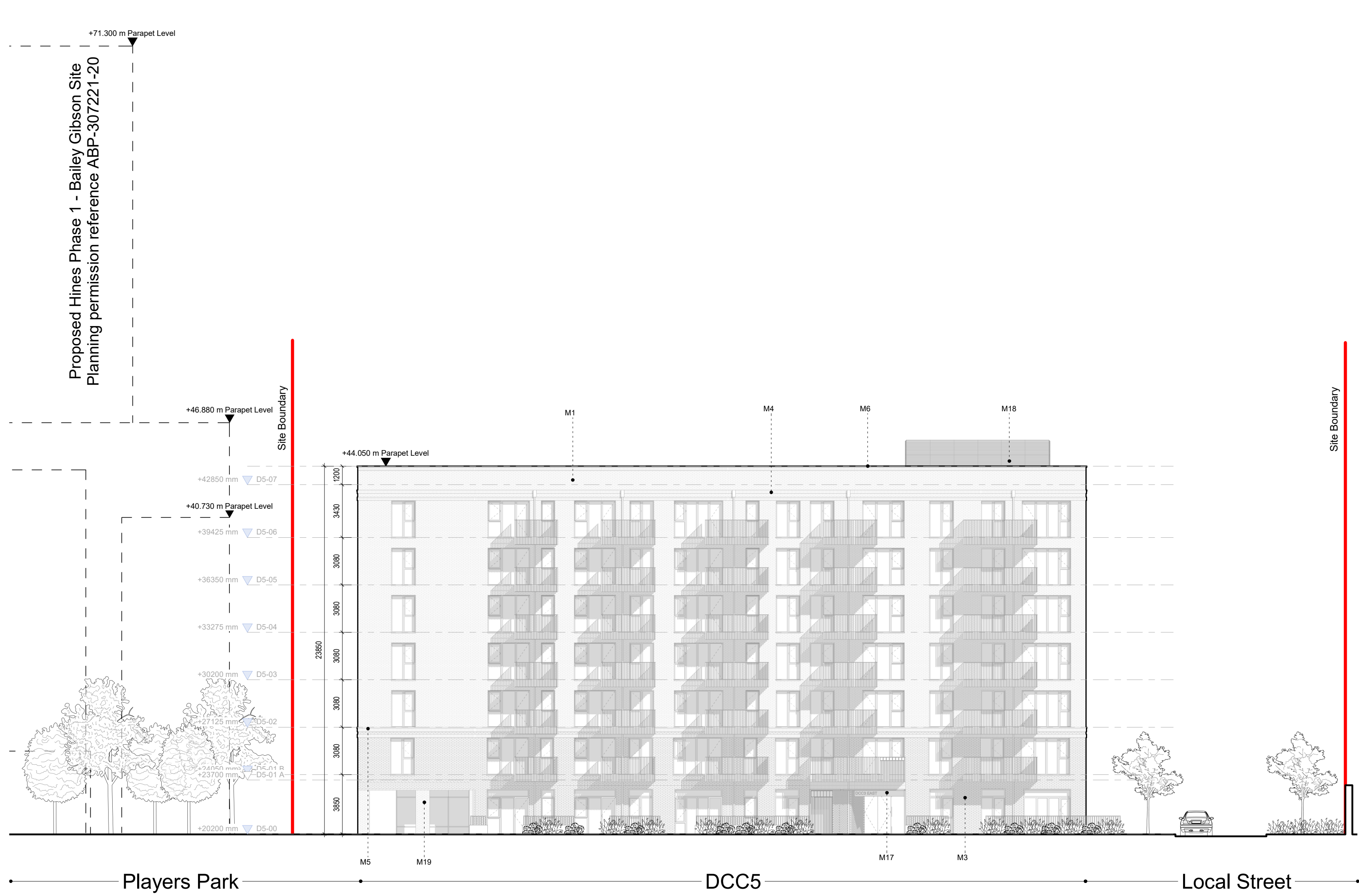


Elevation 7: DCC3 East
1 : 200

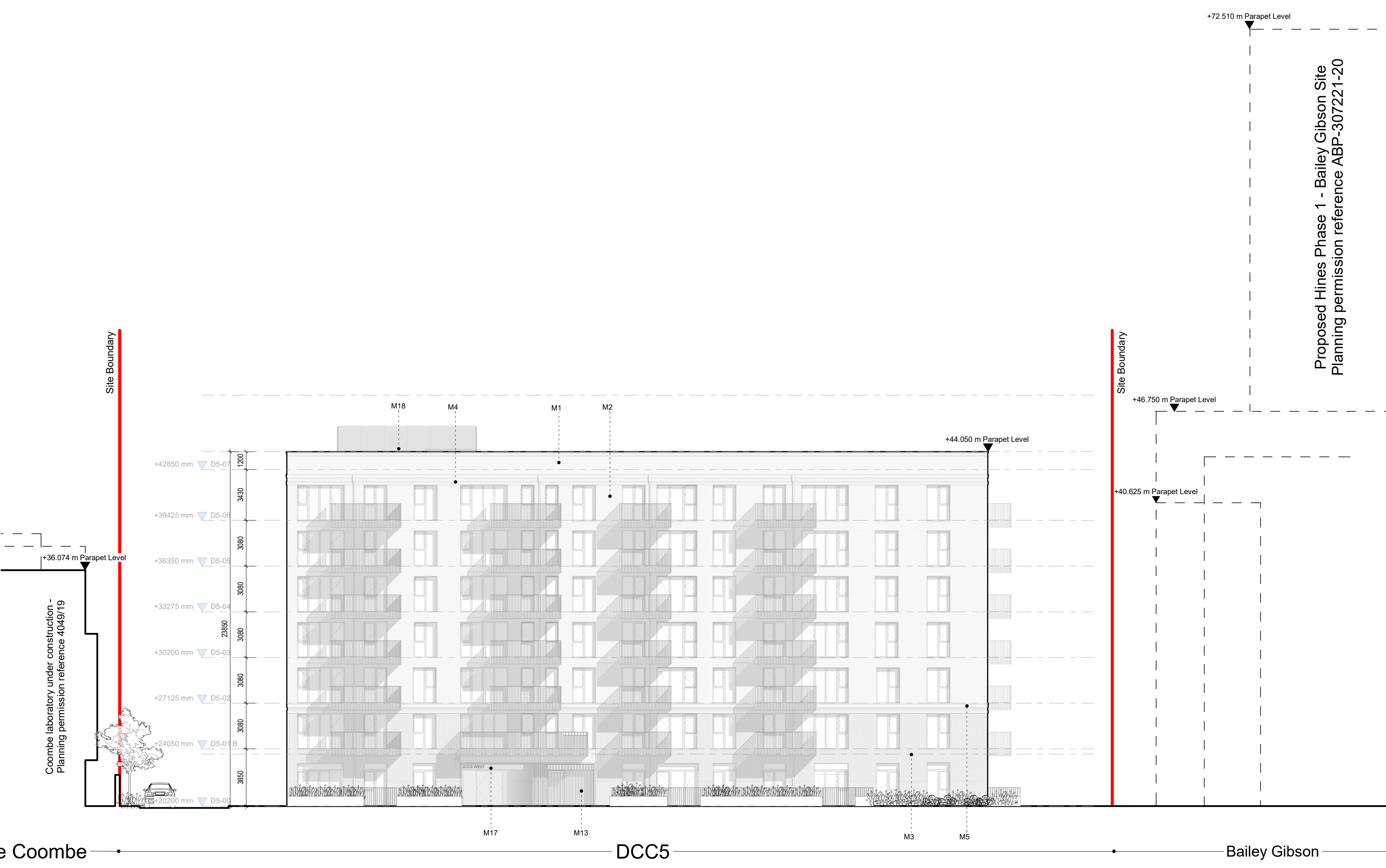
00-ZZ-ML-A-ElevationMaterialKey	
*Ventilation grille positioning strategy as indicated on Facade strategy in Design Statement	
M1	Buff brick, stretcher bond, light mortar
M2	Red brick, stretcher bond, light mortar
M3	Red brick, stretcher bond, dark red mortar to match
M4	Red brick banding with soldier course to top and bottom
M5	Red brick banding with protruding soldier course to top and bottom and PCC sill
M6	Precast concrete parapet coping
M7	PCC metal balcony & railing for colour strategy ref. to Design Statement
M8	Recessed PCC aluminium RWP to Tower, for colour strategy ref. to Design Statement
M9	PCC aluminium window, for colour strategy ref. to Design Statement
M10	PCC aluminium door, for colour strategy ref. to Design Statement
M11	PCC metal entrance gate / railing, for colour strategy ref. to Design Statement
M12	Red brick, full and miss detail
M13	Alternating red/buff sawtooth brick coursing panel with precast concrete head and base course
M14	Recessed entrance w/ alternating red/buff sawtooth brick, precast concrete surround & standard
M15	Louvered screen to mechanical plant
M16	Alternating red/buff stretcher bond coursing, buff
M17	Buff brick soldier course
M18	Recessed panel of alternating red/buff stretcher bond coursing, alternating course recessed
M19	
M20	
M21	



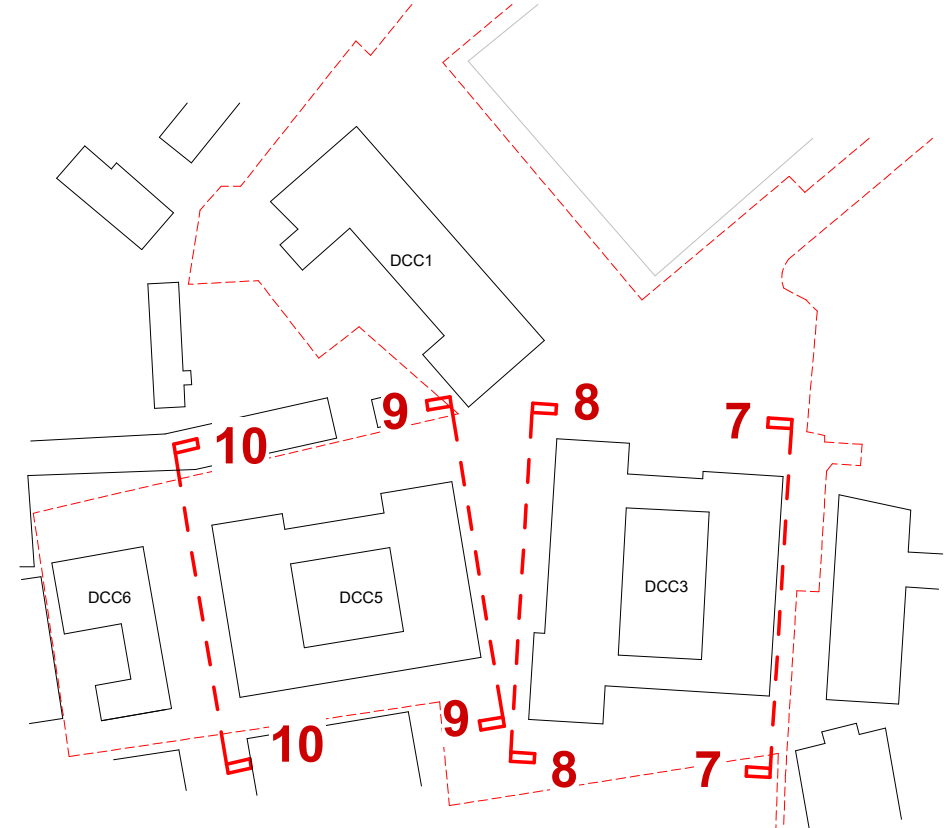
Elevation 8: DCC3 West
1 : 200



Elevation 9: DCC5 East
1 : 200



Elevation 10: DCC5 West
1 : 200



PLANNING

Revision	Date	Description	Issued	Checked
01	Dec '22	Issued for Planning	CC	JH



Notes
For planning purposes only. Do not scale drawings. Errors to be reported to the Architect. To be read in conjunction with all relevant consultants information. All levels shown are above Ordnance datum.
Copyright
Copyright Metropolitan Workshop LLP
No implied license exists. This drawing should not be used to calculate areas for the purpose of valuation.
The drawing was prepared in part, based on survey information provided by others. Whilst this information is believed to be reliable, Metropolitan Workshop assumes no responsibility for the accuracy of the information or any errors or omissions that may have been incorporated into it as a result of incorrect information provided by others.

Key

Metropolitan Workshop

Metropolitan Workshop
Furnally Court
Furnally Lane
Dublin
D08 N2N8

00 353 (0)1 531 4889
www.metwork.ie

Project:	Donore Project, Donore Avenue									
Client:	The Land Development Agency									
Location:	Dublin 8									
Title:	Site Elevations 07 08 09 & 10 With Adjacent Estand Permissions									
Date:	Dec '22									
Scale:	1 : 200 @ A0									
Drawing Number:	STG	MET	00	XX	DR	A	1120102	S4	P1	