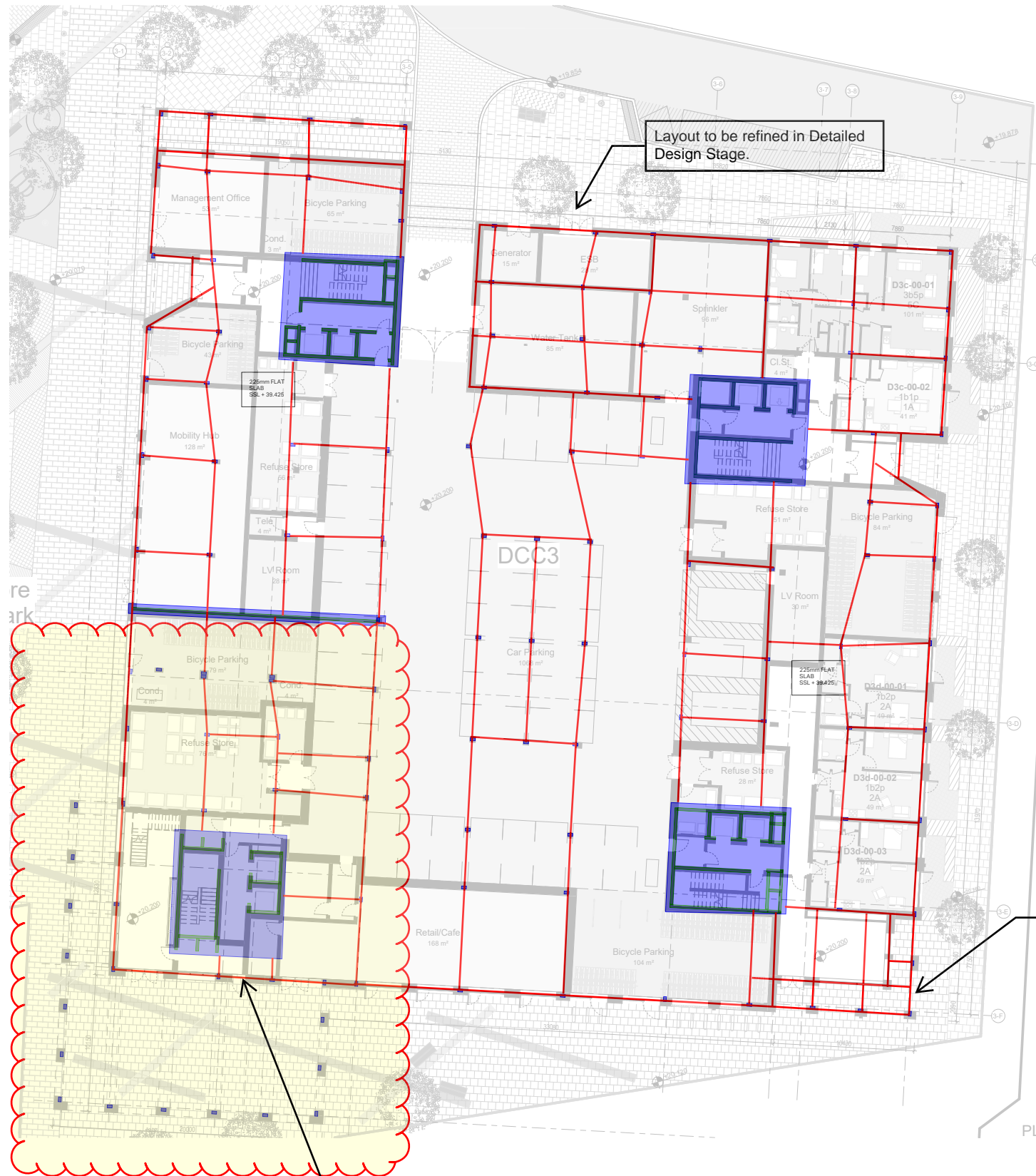
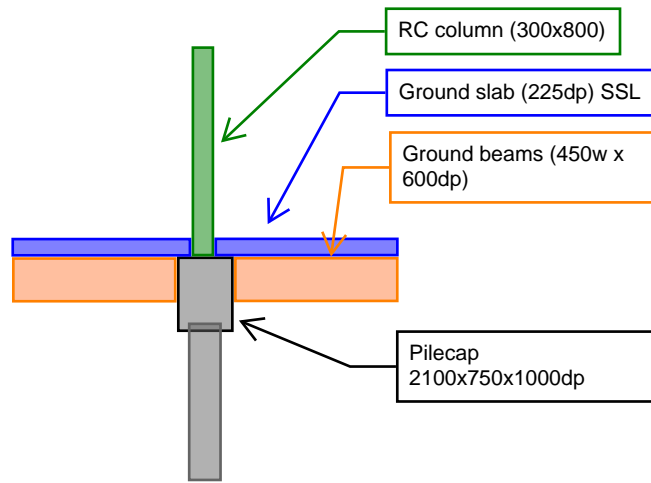
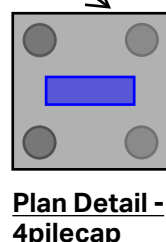
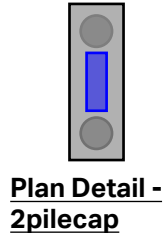


Rev.	Date	Description	Rev/Chk/Apr
P01	14/09/22	FOR INFORMATION	CME/HEH



2100x750x1000dp Pilecap with
 2no. 450dia CFA piles
 embedded into rock layer

2100x2100x1000dp Pilecap with
 4no. 450dia CFA piles
 embedded into rock layer



Ground beams typically
 450x600dp
 All pilecaps 2no. pilecaps as
 shown over

Ground beams typically
 450x600dp
 All pilecaps 4no. pilecaps as
 shown over in clouded area

DCC3 FOUNDATION LAYOUT

This drawing has been prepared for the use of AECOM's client. It may not be used, modified, reproduced or relied upon by third parties, except as agreed by AECOM or as required by law. AECOM accepts no responsibility, and denies any liability whatsoever, to any party that uses or relies on this drawing without AECOM's express written consent. Do not scale this document. All measurements must be obtained from the stated dimensions.