

Figure 11.11 Scenic Routes and Scenic Routes with Designated Views, derived from Draft Mayo County Development Plan 2021 – 2027, Volume 1 Written Statement.

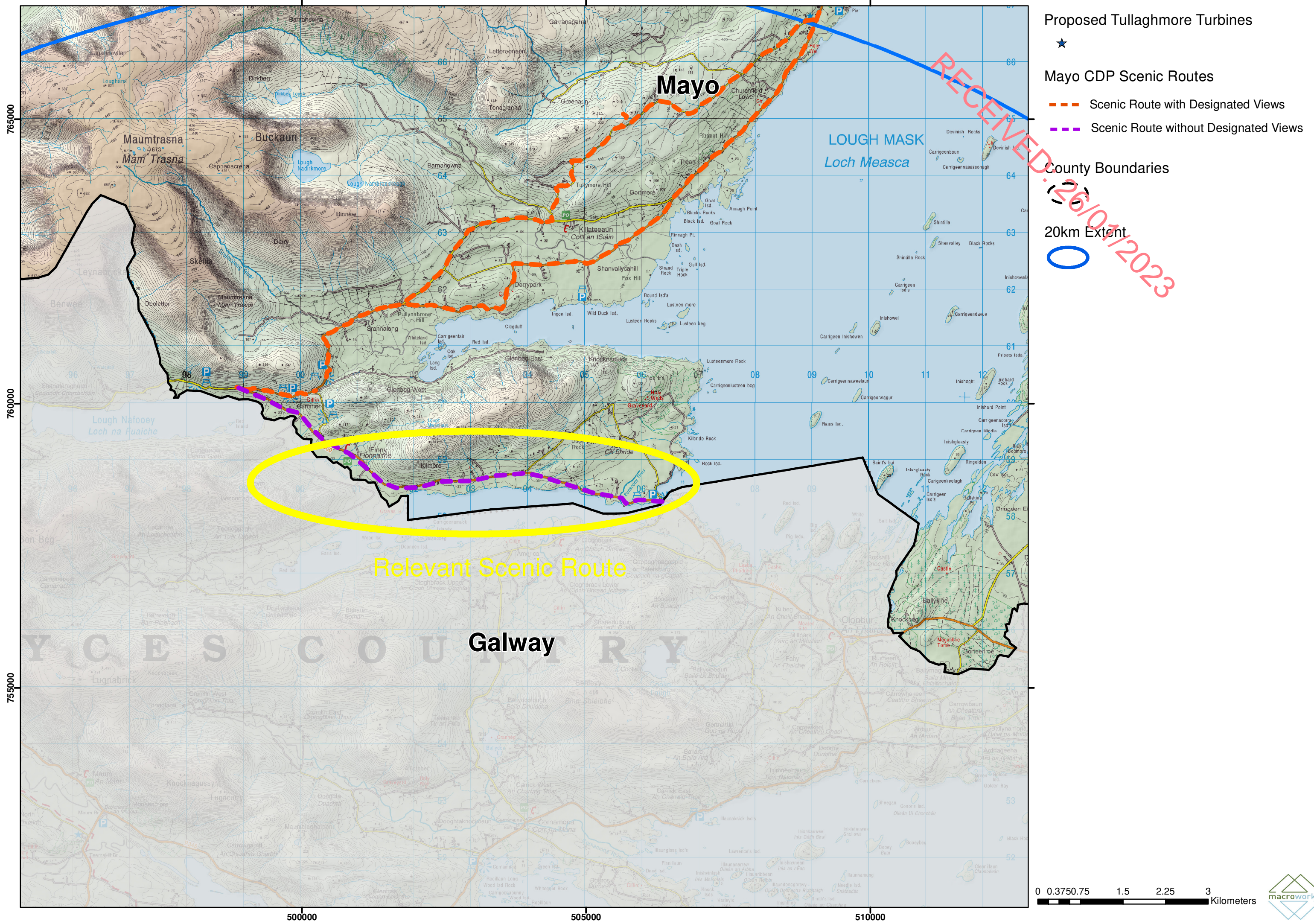
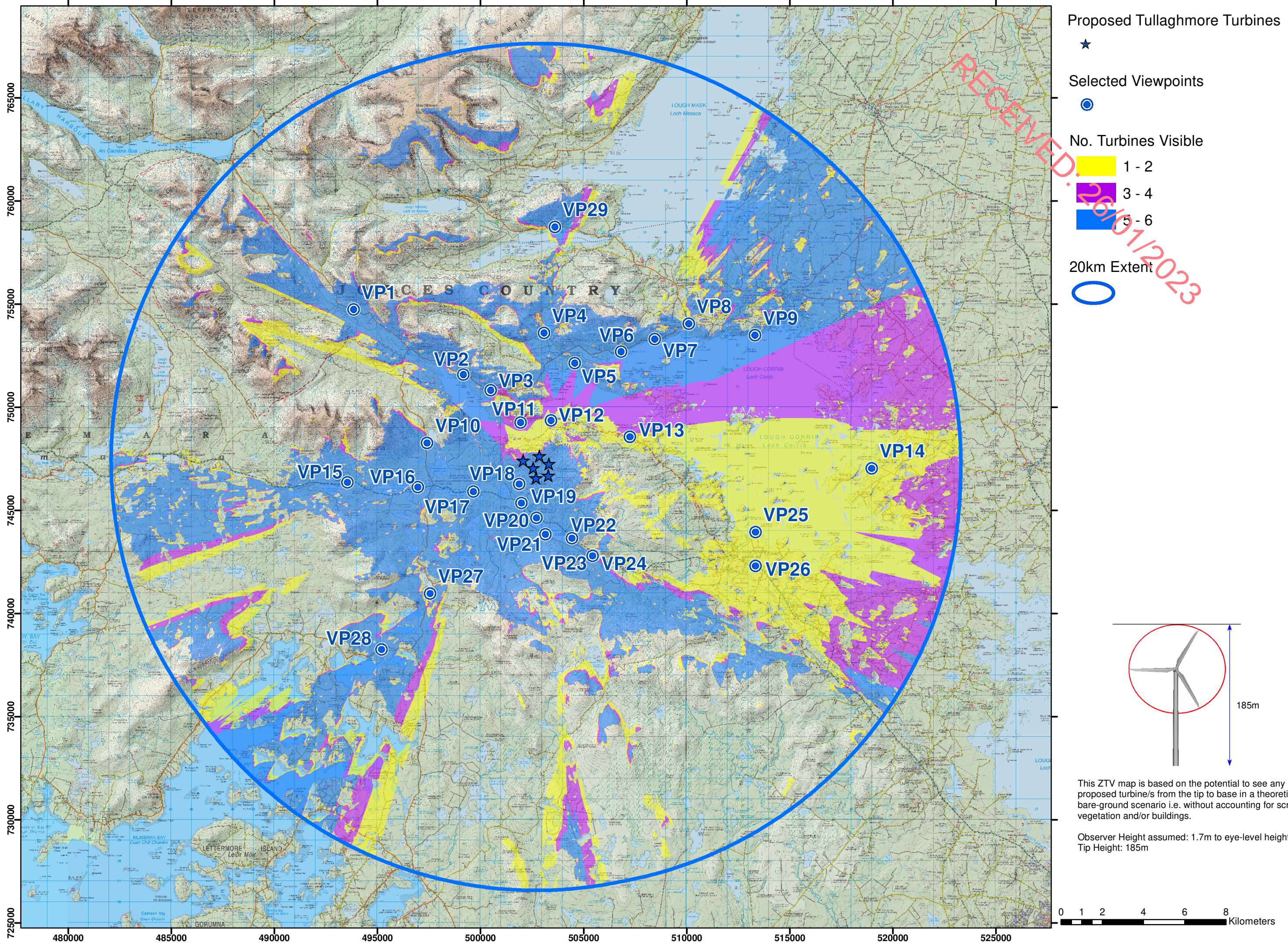


Figure 11.12 Bare ground ZTV (Zone of Theoretical Visibility) indicating the areas that have a potential view of Tullaghmore Wind Farm turbines at 185m Tip Height



This ZTV map is based on the potential to see any part of the proposed turbine/s from the tip to base in a theoretical bare-ground scenario i.e. without accounting for screening by vegetation and/or buildings.

Observer Height assumed: 1.7m to eye-level height
Tip Height: 185m

Figure 11.13 WE-2A Urban and Rural Settlements GCDP 2015 – 2021 Appendix IV Galway County Wind Energy Strategy

