

Figure 11.9 Protected Views derived from 2022 – 2028 CDP/Landscape Character Assessment

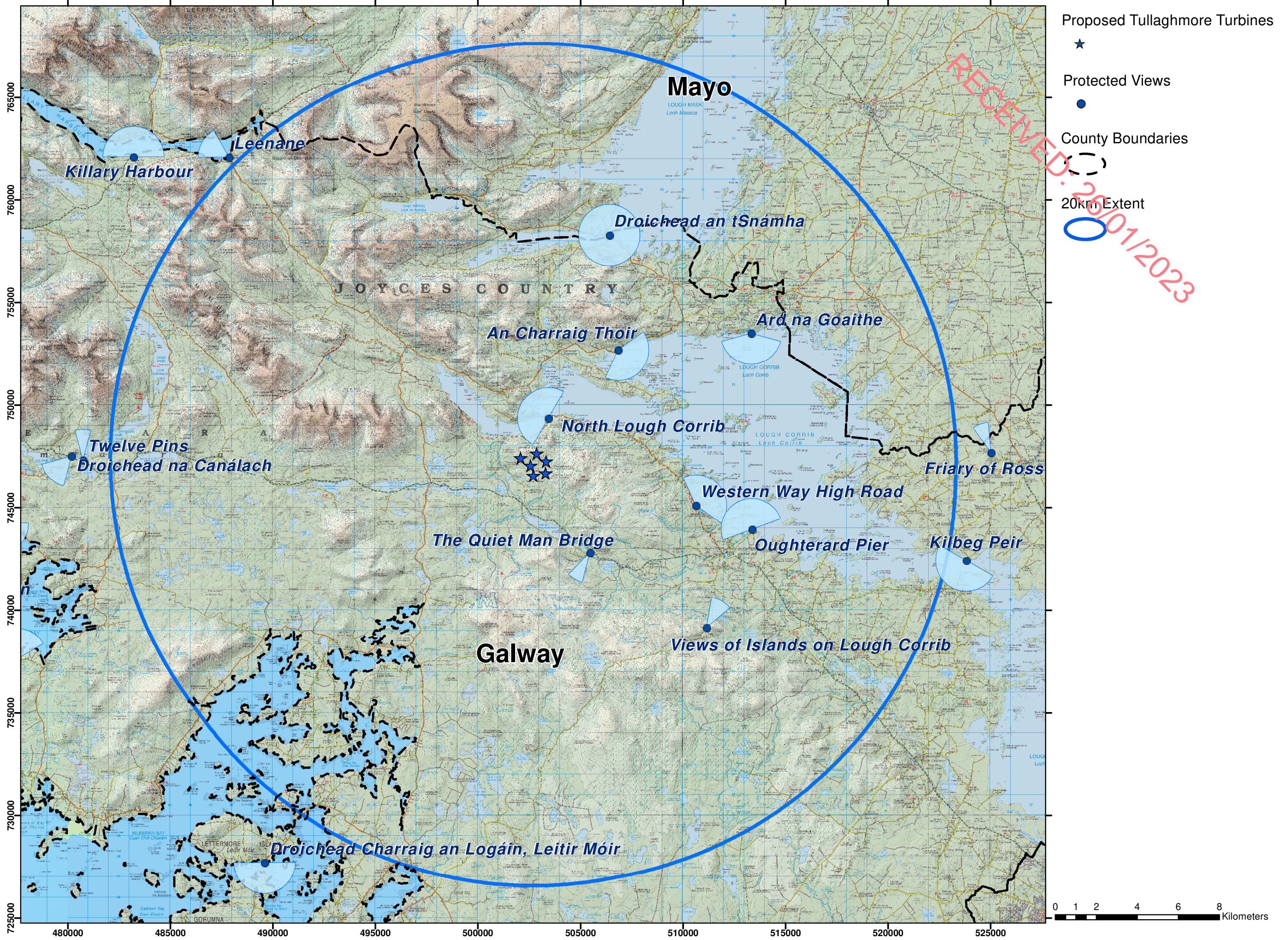
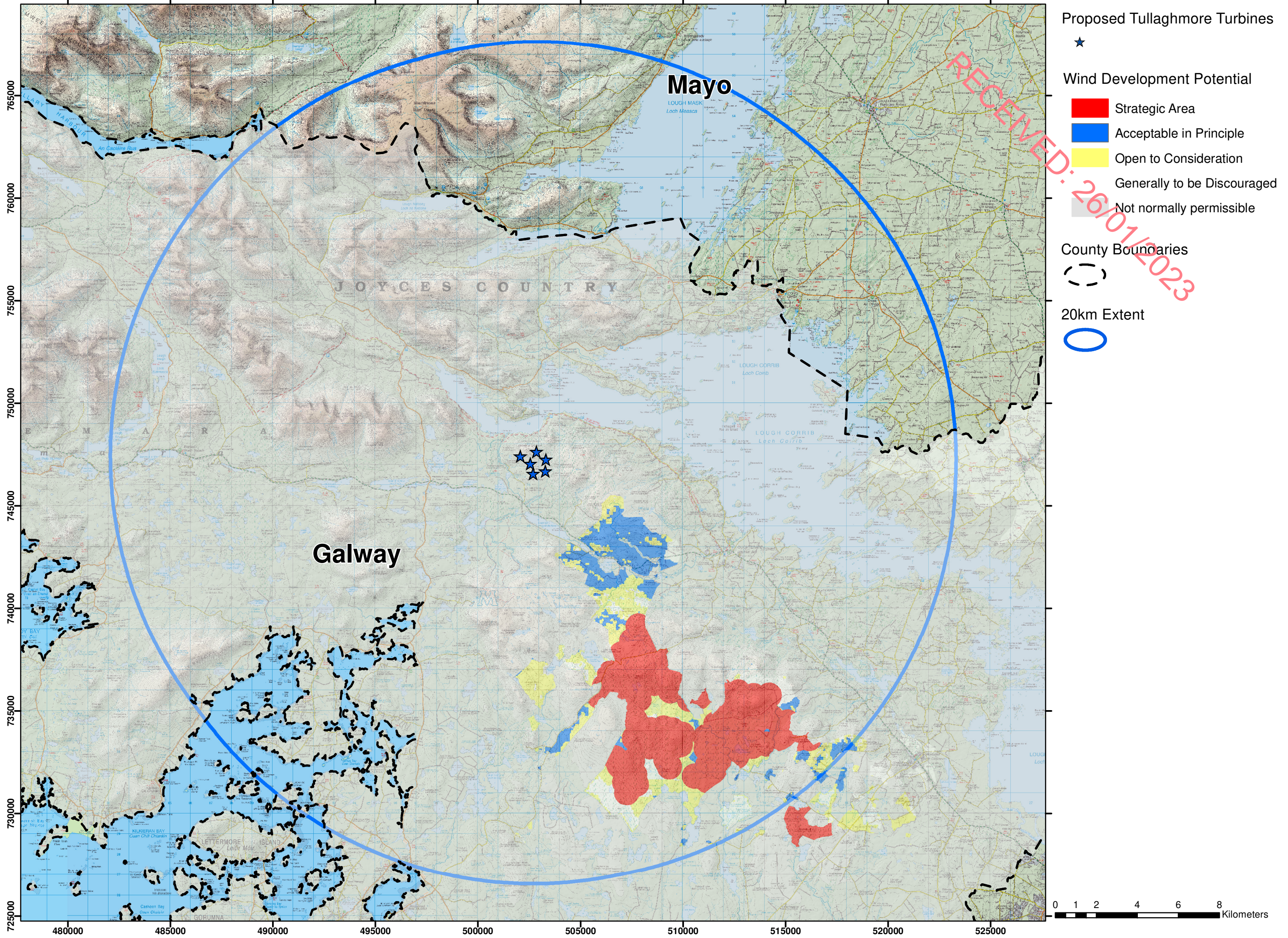


Figure 11.10 Wind Potential (County Galway Draft Local Authority Renewable Energy Strategy 2022-2028)



Proposed Tullaghmore Turbines



Wind Development Potential

- Strategic Area
- Acceptable in Principle
- Open to Consideration
- Generally to be Discouraged
- Not normally permissible

County Boundaries



20km Extent



0 1 2 4 6 8 Kilometers

