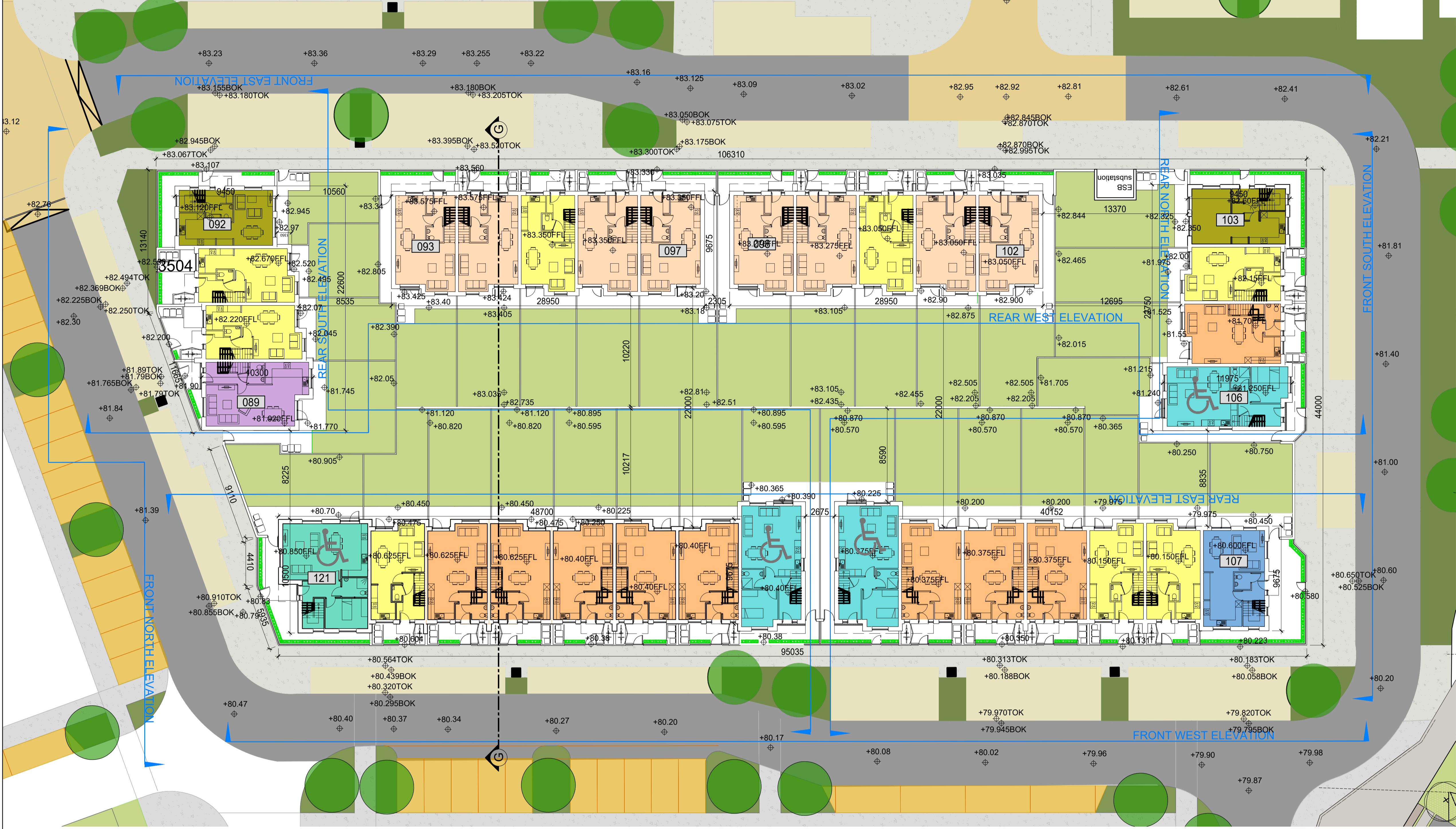
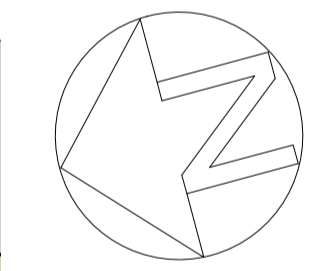


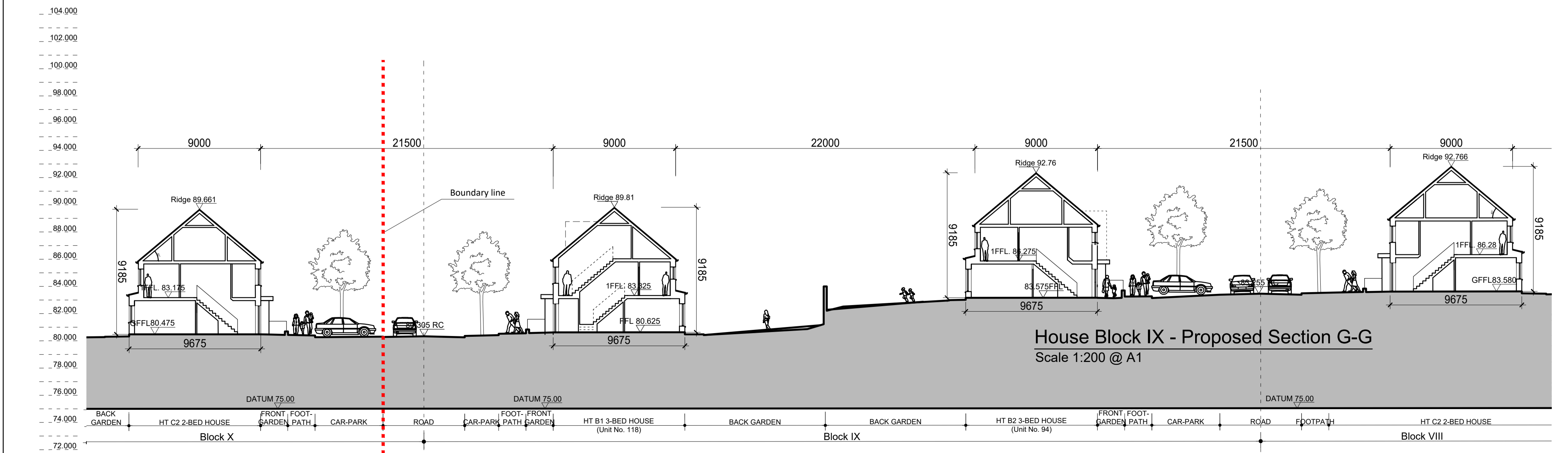
ALL CONSTRUCTION METHODS, MATERIALS, SERVICES & INSTALLATIONS TO BE IN ACCORDANCE WITH ALL IRISH BUILDING REGULATIONS AND CODES OF PRACTICE AT THE TIME OF CONSTRUCTION. ALL SUB-CONTRACTORS ARE ULTIMATELY RESPONSIBLE FOR ENSURING COMPLIANCE WITH REGULATIONS WITHIN THEIR OWN TRADE. NO DIMENSIONS TO BE SCALED, ALL DIMENSIONS TO BE CHECKED ON SITE PRIOR TO CONSTRUCTION, IF IN DOUBT ASK!



HOUSE BLOCK IX UNIT TYPE SUMMARY	No. of Houses
TYPE A1: 4 Bedroom, 7 Person, 3-Storey Terraced House, End Unit	0
TYPE A2: 4 Bedroom, 7 Person, 3-Storey Terraced House, Corner Unit (Side Entrance)	0
TYPE A3: 4 Bedroom, 7 Person, 3-Storey Terraced House, End Unit (dormer)	1
TYPE B1: 3 Bedroom, 6 Person, 3-Storey Terraced House	9
TYPE B2: 3 Bedroom, 5 Person, 2-Storey Terraced House	8
TYPE B3: 3 Bedroom, 6 Person, 3-Storey Terraced House, Corner Unit (Side Entrance)	1
TYPE C1: 2 Bedroom, 4 Person, 2-Storey Terraced House, End Unit	0
TYPE C2: 2 Bedroom, 4 Person, 2-Storey Terraced House, Mid Unit	8
TYPE C3: 2 Bedroom, 4 Person, 2-Storey Terraced House, Corner Unit (Side Entrance)	2
TYPE D1: 4 Bedroom, 7 Person, 2-Storey End Terraced Designated Accessible Unit	1
TYPE D2: 3 Bedroom, 6 Person, 2-Storey End Terraced House Designated Age Friendly/Acc Unit	3
<b>TOTAL NO. OF HOUSES IN BLOCK IX</b>	<b>33</b>



House Block IX - Proposed Plan  
Scale 1:200 @ A1



REVISIONS AFTER LAST PLOT:			

	PROJECT: CHURCH FIELDS EAST DRAWING: HOUSE BLOCK IX PROPOSED PLAN & SECTION G-G	DATE: 26/05/2023 DRAWN: RN K:\20009P	SCALE: 1:200@A1 JOB NO.: 20009 DWG. NO.: P-076
	STAGE: PLANNING	REVISION:	Merchants House, 27-30 Merchants Quay, Dublin 8. Tel: (01) 633 4261. Fax (01) 633 4265 Email: info@walshassociates.ie
	Copyright © 2003 Walsh Associates All Rights Reserved.		