



## APPENDIX 9-3

**PUBLIC LIGHTING REPORT**

Meath County Council - Viewing Purposes Only!

**DATE:** 17 August 2022

**DESIGNER:** Alex Naper

**PROJECT No:** SES 01222 Rev B

**PROJECT NAME:** Site C – Strategic Housing Development- Sky Castle Ltd.



Residential area designed in accordance with EN13201-2:2015 Category P4.  
Car parks designed in accordance with EN12464-2:2014 5.9.1  
Distributor road carriageway section designed in accordance with EN13201-2:2015 Category M4.  
Distributor road as a whole designed in accordance with EN13201-2:2015 Category P2.  
Conflict areas designed in accordance with EN13201-2:2015 Category C3.  
Link Road designed in accordance with EN13201-2:2015 Category P3.

Rev A: Updated site layout.  
Rev B: Existing HID luminaires added.

## **Outdoor Lighting Report**

**PREPARED BY:**

Sabre Electrical Services Ltd.  
Unit 11,  
Bellview Industrial Estate,  
Tolka Valley Road,  
Dublin 11  
Phone Number: 01 8110875  
Contact: Graham Sheehan  
eMail: graham@sabrelighting.ie

## Layout Report

### General Data

Dimensions in Metres Angles in Degrees

### Calculation Grids

ID	Grid Name	X	Y	X' Length	Y' Length	X' Spacing	Y' Spacing
1	Grid 1	179.15	672.48	54.00	69.00	1.50	1.50
2	Grid 2	223.73	640.13	172.38	108.00	1.50	1.50
3	Grid 3	398.26	562.05	48.00	36.00	1.50	1.50
4	Grid 4	444.41	552.71	192.00	30.00	1.50	1.50
5	Grid 5	631.43	503.18	36.00	51.00	1.50	1.50
6	Grid 6	660.28	451.05	138.00	105.00	1.50	1.50
7	Grid 7	793.90	416.44	48.00	39.00	1.50	1.50
8	Grid 8	627.97	130.25	375.78	307.00	1.50	1.50
9	Grid 9	115.61	401.72	375.67	83.99	1.50	1.50
10	Grid 10	642.63	273.10	70.40	30.00	1.50	1.50
11	Grid 11	748.56	399.27	33.00	54.00	1.50	1.50
12	Grid 12	775.36	384.00	24.00	27.00	1.50	1.50
13	Grid 13	67.17	515.26	276.00	211.29	1.50	1.50
14	Grid 14	295.17	361.95	240.00	234.00	1.50	1.50
15	Grid 15	432.91	479.64	227.97	73.42	1.50	1.50
16	Grid 16	56.10	603.07	81.00	138.00	1.50	1.50
17	Grid 17	-19.92	543.87	81.00	96.00	1.50	1.50
18	Grid 18	-74.64	623.33	96.00	96.00	1.50	1.50
19	Grid 19	588.24	384.15	154.00	27.00	1.50	1.50
20	Grid 20	931.01	-191.05	81.00	307.00	1.50	1.50

### Luminaires



#### Luminaire A Data

Supplier	C U Phosco
Type	P863-128-R2E-730-W3-425-55W
Lamp(s)	730SS
Lamp Flux (klm)	7.78
File Name	P863-128-R2E-730-W3-425-55W.ies
Maintenance Factor	0.87
Imax70,80,90(cd/klm)	463.7, 84.3, 0.0
No. in Project	23

#### Luminaire B Data

Supplier	C U Phosco
Type	E950-28-P4A-730-C550-14W
Lamp(s)	730N
Lamp Flux (klm)	2.08
File Name	E950-28-P4A-730-C0550-14W.ies
Maintenance Factor	0.82
Imax70,80,90(cd/klm)	659.3, 183.1, 0.3
No. in Project	81

#### Luminaire C Data

Supplier	C U Phosco
Type	E950-28-P4A-730-C250-8W
Lamp(s)	730N
Lamp Flux (klm)	0.98
File Name	E950-28-P4A-730-C0250-8W.ies
Maintenance Factor	0.82
Imax70,80,90(cd/klm)	659.3, 183.1, 0.3
No. in Project	23

#### Luminaire D Data

Supplier	C U Phosco
Type	E950-28-F2A-730-C550-14W
Lamp(s)	730N
Lamp Flux (klm)	2.11
File Name	E950-28-F2A-730-C0550-14W.ies
Maintenance Factor	0.82
Imax70,80,90(cd/klm)	623.6, 113.9, 0.3
No. in Project	15

**Luminaires****Luminaire E Data**

Supplier	C U Phosco
Type	P862-256-R2E-730-W3-425-107W
Lamp(s)	730SS
Lamp Flux (klm)	14.97
File Name	P862-256-R2E-730-W3-425-107W.ies
Maintenance Factor	0.87
Imax70,80,90(cd/klm)	458.4, 47.0, 0.0
No. in Project	10

**Luminaire F Data**

Supplier	C U Phosco
Type	P863-128-R4-730-W3-300-40W
Lamp(s)	730SS
Lamp Flux (klm)	5.53
File Name	P863-128-R4-730-W3-300-40W.ies
Maintenance Factor	0.87
Imax70,80,90(cd/klm)	386.2, 27.2, 0.4
No. in Project	24

**Luminaire G Data**

Supplier	C U Phosco
Type	P862-256-R2E-730-W3-300-76W
Lamp(s)	730SS
Lamp Flux (klm)	10.70
File Name	P862-256-R2E-730-W3-300-76W.ies
Maintenance Factor	0.87
Imax70,80,90(cd/klm)	458.4, 47.0, 0.0
No. in Project	5

**Luminaire H Data**

Supplier	C U Phosco
Type	P863-128-F2B-730-W3-300-40W
Lamp(s)	730SS
Lamp Flux (klm)	5.39
File Name	P863-128-F2B-730-W3-300-40W.ies
Maintenance Factor	0.87
Imax70,80,90(cd/klm)	461.8, 61.8, 0.8
No. in Project	1

**Luminaire I Data**

Supplier	C U Phosco
Type	E950-28-P4A-822-BB-A0500-13W
Lamp(s)	822N
Lamp Flux (klm)	1.23
File Name	E950-28-P4A-822-BB-A0500-13W.ies
Maintenance Factor	0.83
Imax70,80,90(cd/klm)	590.5, 96.9, 0.3
No. in Project	46

**Luminaire J Data**

Supplier	
Type	2685 SNN-1C#
Lamp(s)	1 ST 150 17500 2000 E40
LampFlux(klm)/Colour	17.50 1950 / 23
File Name	Arc 2685 SNN 1C# 1 ST 150 17500 1950 E 40.ltd
Maintenance Factor	0.75
Imax70,80,90(cd/klm)	352.0, 100.0, 5.0
No. in Project	8

**Layout**

ID	Type	X	Y	Height	Angle	Tilt	Cant	Out-reach	Target X	Target Y	Target Z
1	E	208.27	672.81	10.00	311.00	0.00	0.00	0.50			
2	E	198.95	640.33	10.00	125.00	0.00	0.00	0.50			
3	A	228.69	644.88	8.00	43.00	0.00	0.00	0.50			
4	A	297.50	604.85	8.00	250.00	0.00	0.00	0.50			
5	A	273.01	609.26	8.00	49.00	0.00	0.00	0.50			
6	A	323.34	583.61	8.00	73.00	0.00	0.00	0.50			
7	B	296.20	588.77	6.00	151.00	0.00	0.00	0.40			
8	A	423.50	573.20	8.00	265.00	0.00	0.00	0.50			
9	A	389.16	568.47	8.00	76.00	0.00	0.00	0.50			
10	A	444.89	560.40	8.00	89.00	0.00	0.00	0.50			
11	B	427.10	554.90	6.00	178.00	0.00	0.00	0.50			
12	A	355.14	574.15	8.00	79.00	0.00	0.00	0.50			
13	A	640.33	530.26	8.00	60.00	0.00	0.00	0.50			
14	A	665.55	512.77	8.00	57.00	0.00	0.00	0.50			
15	A	783.31	443.06	8.00	59.00	0.00	0.00	0.50			
16	A	813.58	436.85	8.00	243.00	0.00	0.00	0.50			
17	A	828.49	418.69	8.00	62.00	0.00	0.00	0.50			
18	F	797.71	417.43	8.00	325.00	0.00	0.00	0.50			
19	A	252.24	623.80	8.00	54.00	0.00	0.00	0.50			
20	A	611.82	536.40	8.00	85.00	0.00	0.00	0.50			
21	A	478.53	555.68	8.00	89.00	0.00	0.00	0.50			
22	A	512.26	550.80	8.00	89.00	0.00	0.00	0.50			
23	A	545.79	545.82	8.00	89.00	0.00	0.00	0.50			
24	A	578.26	541.07	8.00	89.00	0.00	0.00	0.50			
25	A	693.79	492.02	8.00	67.00	0.00	0.00	0.50			
26	A	723.22	475.42	8.00	60.00	0.00	0.00	0.50			
27	A	753.17	459.05	8.00	59.00	0.00	0.00	0.50			
28	F	794.24	390.83	8.00	156.00	0.00	0.00	0.50			
29	F	771.34	371.59	8.00	325.00	0.00	0.00	0.50			
30	F	686.76	241.27	8.00	61.00	0.00	0.00	0.50			
31	F	670.22	261.89	8.00	241.00	0.00	0.00	0.50			
32	F	710.19	239.97	8.00	240.00	0.00	0.00	0.50			
33	F	700.27	276.13	8.00	322.00	0.00	0.00	0.50			
34	A	641.37	275.58	8.00	252.00	0.00	0.00	0.50			
35	F	747.73	348.75	8.00	312.00	0.00	0.00	0.50			
36	F	726.09	320.59	8.00	329.00	0.00	0.00	0.50			

**Layout Continued**

ID	Type	X	Y	Height	Angle	Tilt	Cant	Out-reach	Target X	Target Y	Target Z
37	F	711.50	300.20	8.00	331.00	0.00	0.00	0.50			
38	B	271.67	573.26	6.00	322.00	0.00	0.00	0.40			
39	B	677.46	261.15	6.00	58.00	0.00	0.00	0.50			
40	B	660.52	270.56	6.00	58.00	0.00	0.00	0.50			
41	B	677.61	282.33	6.00	238.00	0.00	0.00	0.50			
42	B	774.76	395.71	6.00	58.00	0.00	0.00	0.50			
43	B	767.41	417.70	6.00	327.00	0.00	0.00	0.50			
44	B	776.77	434.42	6.00	327.00	0.00	0.00	0.50			
45	B	787.23	417.57	6.00	148.00	0.00	0.00	0.50			
46	B	275.64	553.87	6.00	140.00	0.00	0.00	0.40			
47	B	246.98	545.57	6.00	316.00	0.00	0.00	0.40			
48	B	248.25	526.32	6.00	138.00	0.00	0.00	0.40			
49	D	234.00	544.16	6.00	222.00	0.00	0.00	0.40			
50	B	213.31	554.39	6.00	36.00	0.00	0.00	0.40			
51	B	200.97	585.16	6.00	39.00	0.00	0.00	0.40			
52	B	217.06	615.74	6.00	310.00	0.00	0.00	0.40			
53	B	224.73	596.57	6.00	127.00	0.00	0.00	0.40			
54	C	231.90	633.42	5.00	313.00	0.00	0.00	0.40			
55	B	244.16	613.12	6.00	134.00	0.00	0.00	0.40			
56	C	266.87	587.60	5.00	241.00	0.00	0.00	0.40			
57	C	246.59	600.19	5.00	241.00	0.00	0.00	0.40			
58	C	254.30	580.21	5.00	135.00	0.00	0.00	0.40			
59	C	237.65	563.61	5.00	134.00	0.00	0.00	0.40			
60	E	-28.10	534.01	10.00	297.00	0.00	0.00	0.50			
61	F	651.85	545.35	8.00	317.00	0.00	0.00	0.50			
62	B	181.47	602.07	6.00	297.00	0.00	0.00	0.40			
63	B	149.70	578.39	6.00	304.00	0.00	0.00	0.40			
64	B	173.80	581.98	6.00	123.00	0.00	0.00	0.40			
65	B	146.04	561.30	6.00	129.00	0.00	0.00	0.40			
66	B	134.48	579.99	6.00	213.00	0.00	0.00	0.40			
67	B	118.03	569.29	6.00	31.00	0.00	0.00	0.40			
68	B	149.91	537.15	6.00	219.00	0.00	0.00	0.40			
69	B	171.35	508.25	6.00	221.00	0.00	0.00	0.40			
70	B	180.92	482.69	6.00	62.00	0.00	0.00	0.40			
71	B	198.60	496.74	6.00	305.00	0.00	0.00	0.40			
72	B	224.20	516.18	6.00	307.00	0.00	0.00	0.40			

**Layout Continued**

ID	Type	X	Y	Height	Angle	Tilt	Cant	Out-reach	Target X	Target Y	Target Z
73	B	226.41	461.79	6.00	230.00	0.00	0.00	0.40			
74	B	202.95	465.56	6.00	47.00	0.00	0.00	0.40			
75	B	253.36	448.16	6.00	274.00	0.00	0.00	0.40			
76	B	296.38	445.50	6.00	243.00	0.00	0.00	0.40			
77	B	239.79	438.65	6.00	72.00	0.00	0.00	0.40			
78	B	281.03	461.62	6.00	344.00	0.00	0.00	0.40			
79	B	302.61	493.25	6.00	307.00	0.00	0.00	0.40			
80	B	332.89	500.44	6.00	245.00	0.00	0.00	0.40			
81	B	300.22	527.19	6.00	237.00	0.00	0.00	0.40			
82	B	281.97	543.71	6.00	220.00	0.00	0.00	0.40			
83	B	330.72	516.49	6.00	143.00	0.00	0.00	0.40			
84	B	347.52	538.51	6.00	144.00	0.00	0.00	0.40			
85	B	357.35	560.27	6.00	165.00	0.00	0.00	0.40			
86	B	358.92	482.09	6.00	234.00	0.00	0.00	0.40			
87	B	316.66	420.15	6.00	198.00	0.00	0.00	0.40			
88	B	322.98	397.50	6.00	258.00	0.00	0.00	0.40			
89	C	306.11	402.28	5.00	8.00	0.00	0.00	0.40			
90	C	298.98	428.02	5.00	38.00	0.00	0.00	0.40			
91	C	274.80	438.99	5.00	89.00	0.00	0.00	0.40			
92	C	224.12	567.50	5.00	195.00	0.00	0.00	0.40			
93	C	343.14	505.98	5.00	199.00	0.00	0.00	0.40			
94	B	423.66	527.77	6.00	174.00	0.00	0.00	0.50			
95	B	425.88	509.17	6.00	263.00	0.00	0.00	0.50			
96	B	457.09	497.24	6.00	237.00	0.00	0.00	0.50			
97	B	470.12	475.37	6.00	55.00	0.00	0.00	0.50			
98	B	478.23	496.47	6.00	326.00	0.00	0.00	0.50			
99	B	493.61	495.57	6.00	160.00	0.00	0.00	0.50			
100	B	483.62	521.03	6.00	354.00	0.00	0.00	0.50			
101	B	499.50	467.67	6.00	232.00	0.00	0.00	0.50			
102	B	496.06	441.66	6.00	140.00	0.00	0.00	0.50			
103	D	517.67	444.83	6.00	154.00	0.00	0.00	0.50			
104	B	490.81	456.25	6.00	52.00	0.00	0.00	0.50			
105	B	476.74	435.98	6.00	294.00	0.00	0.00	0.50			
106	B	466.05	419.15	6.00	130.00	0.00	0.00	0.50			
107	B	440.78	406.48	6.00	326.00	0.00	0.00	0.50			
108	B	442.93	390.58	6.00	140.00	0.00	0.00	0.50			

**Layout Continued**

ID	Type	X	Y	Height	Angle	Tilt	Cant	Out-reach	Target X	Target Y	Target Z
109	B	426.81	363.15	6.00	18.00	0.00	0.00	0.50			
110	B	424.59	345.72	6.00	319.00	0.00	0.00	0.50			
111	B	396.40	322.28	6.00	242.00	0.00	0.00	0.50			
112	B	409.25	326.79	6.00	314.00	0.00	0.00	0.50			
113	B	372.62	340.54	6.00	239.00	0.00	0.00	0.50			
114	B	344.84	363.21	6.00	241.00	0.00	0.00	0.50			
115	B	321.96	381.61	6.00	229.00	0.00	0.00	0.50			
116	B	347.35	399.66	6.00	130.00	0.00	0.00	0.50			
117	B	364.96	420.50	6.00	139.00	0.00	0.00	0.50			
118	B	373.58	445.86	6.00	316.00	0.00	0.00	0.50			
119	B	379.02	459.97	6.00	48.00	0.00	0.00	0.50			
120	B	399.63	472.79	6.00	316.00	0.00	0.00	0.50			
121	B	409.65	496.21	6.00	345.00	0.00	0.00	0.50			
122	C	391.43	424.91	5.00	144.00	0.00	0.00	0.50			
123	C	395.47	444.57	5.00	233.00	0.00	0.00	0.50			
124	B	384.72	416.65	6.00	227.00	0.00	0.00	0.50			
125	B	411.72	394.79	6.00	231.00	0.00	0.00	0.50			
126	C	508.27	479.94	5.00	328.00	0.00	0.00	0.50			
127	C	519.77	472.40	5.00	144.00	0.00	0.00	0.50			
128	C	537.56	466.02	5.00	331.00	0.00	0.00	0.50			
129	D	543.97	489.24	5.00	347.00	0.00	0.00	0.50			
130	C	524.01	453.57	5.00	253.00	0.00	0.00	0.50			
131	C	514.28	501.86	5.00	351.00	0.00	0.00	0.50			
132	C	526.07	500.76	6.00	167.00	0.00	0.00	0.50			
133	D	500.20	539.53	6.00	165.00	0.00	0.00	0.50			
134	D	509.90	528.45	6.00	264.00	0.00	0.00	0.50			
135	D	501.10	509.45	6.00	84.00	0.00	0.00	0.50			
136	D	527.15	526.13	6.00	266.00	0.00	0.00	0.50			
137	D	522.37	506.65	6.00	82.00	0.00	0.00	0.50			
138	D	547.57	523.10	6.00	265.00	0.00	0.00	0.50			
139	D	544.34	503.86	6.00	82.00	0.00	0.00	0.50			
140	D	558.25	488.54	6.00	84.00	0.00	0.00	0.50			
141	D	567.97	509.61	6.00	264.00	0.00	0.00	0.50			
142	D	586.74	499.03	6.00	168.00	0.00	0.00	0.50			
143	C	601.64	505.07	5.00	275.00	0.00	0.00	0.50			
144	C	620.91	515.99	5.00	318.00	0.00	0.00	0.50			



**Layout Continued**

ID	Type	X	Y	Height	Angle	Tilt	Cant	Out-reach	Target X	Target Y	Target Z
145	E	75.26	561.55	10.00	125.00	0.00	0.00	0.50			
146	E	40.21	567.02	10.00	313.00	0.00	0.00	0.50			
147	C	383.32	436.68	5.00	142.00	0.00	0.00	0.40			
148	F	49.02	575.93	8.00	34.00	0.00	0.00	0.50			
149	E	6.98	549.98	10.00	297.00	0.00	0.00	0.50			
150	E	162.19	638.30	10.00	303.00	0.00	0.00	0.50			
151	B	715.81	327.52	6.00	64.00	0.00	0.00	0.50			
152	E	99.02	597.80	10.00	301.00	0.00	0.00	0.50			
153	E	140.32	598.64	10.00	126.00	0.00	0.00	0.50			
154	B	685.36	344.20	6.00	64.00	0.00	0.00	0.50			
155	B	709.67	348.46	6.00	242.00	0.00	0.00	0.50			
156	B	660.76	358.30	6.00	64.00	0.00	0.00	0.50			
157	B	615.68	379.08	6.00	70.00	0.00	0.00	0.50			
158	D	610.85	399.55	6.00	242.00	0.00	0.00	0.50			
159	B	638.30	369.37	6.00	64.00	0.00	0.00	0.50			
160	B	683.24	363.39	6.00	249.00	0.00	0.00	0.50			
161	E	248.25	675.60	10.00	123.00	0.00	0.00	0.50			
162	C	332.89	384.60	5.00	134.00	0.00	0.00	0.40			
163	C	561.70	533.10	5.00	355.00	0.00	0.00	0.40			
164	G	1006.55	105.63	10.00	355.00	0.00	0.00	0.50			
165	G	1000.63	66.40	10.00	353.00	0.00	0.00	0.50			
166	G	995.78	27.16	10.00	355.00	0.00	0.00	0.50			
167	G	990.35	-11.84	10.00	355.00	0.00	0.00	0.50			
168	J	1001.14	-52.97	10.00	175.00	5.00	0.00	2.00			
169	J	994.47	-113.53	10.00	171.00	5.00	0.00	2.00			
170	J	989.12	-157.38	10.00	177.00	5.00	0.00	2.00			
171	J	956.10	-208.57	10.00	293.00	5.00	0.00	2.00			
172	J	982.61	-217.53	10.00	192.00	5.00	0.00	2.00			
173	F	937.97	105.63	8.00	251.00	0.00	0.00	0.50			
174	F	987.51	84.47	8.00	86.00	0.00	0.00	0.50			
175	F	958.07	89.41	8.00	70.00	0.00	0.00	0.50			
176	F	912.98	106.38	8.00	61.00	0.00	0.00	0.50			
177	F	892.20	130.44	8.00	243.00	0.00	0.00	0.50			
178	F	863.46	148.55	8.00	247.00	0.00	0.00	0.50			
179	F	835.85	153.95	8.00	59.00	0.00	0.00	0.50			
180	F	816.89	177.30	8.00	246.00	0.00	0.00	0.50			

**Layout Continued**

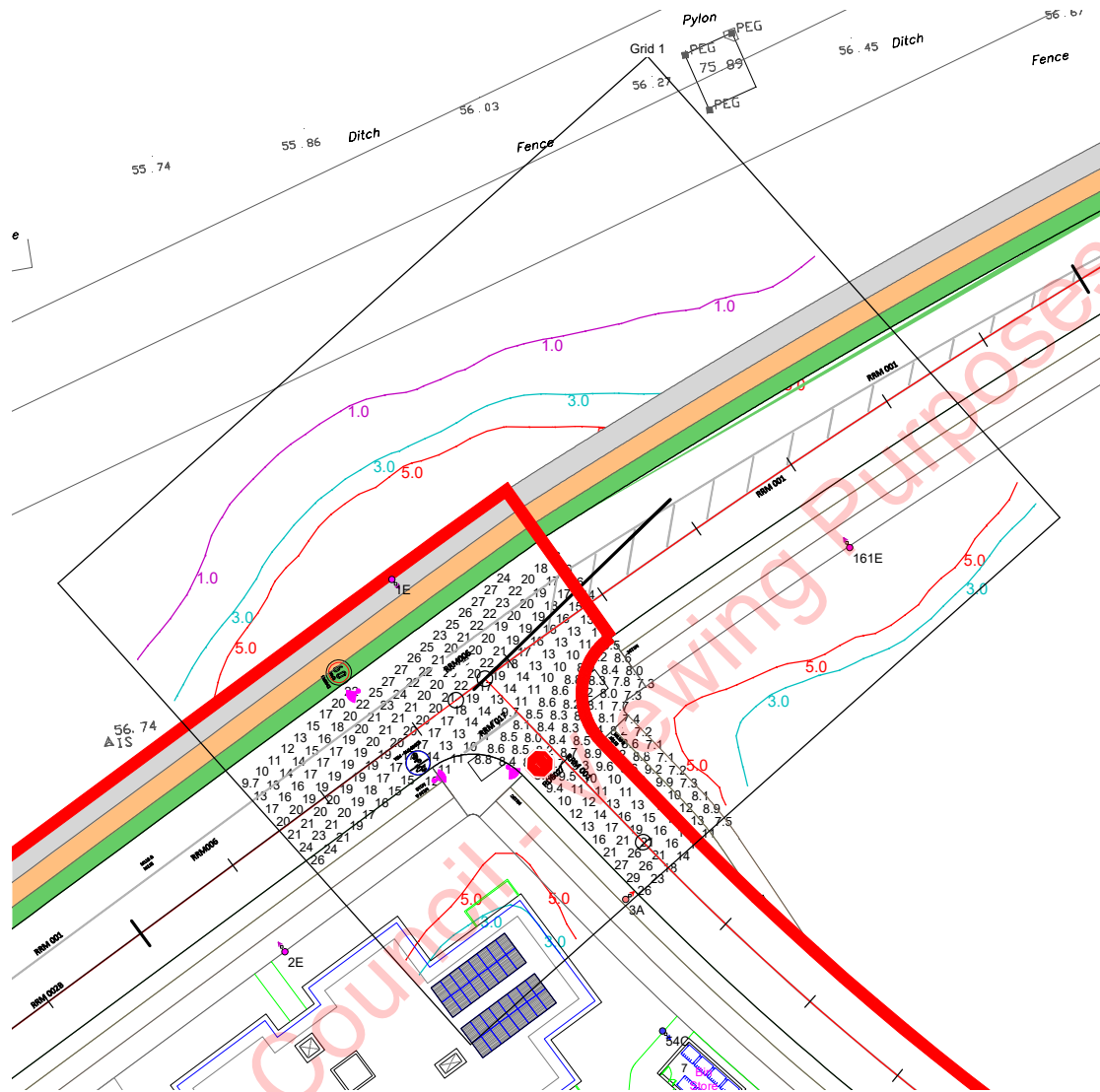
ID	Type	X	Y	Height	Angle	Tilt	Cant	Out-reach	Target X	Target Y	Target Z
181	F	788.11	183.51	8.00	58.00	0.00	0.00	0.50			
182	F	766.22	208.72	8.00	243.00	0.00	0.00	0.50			
183	F	735.82	226.08	8.00	243.00	0.00	0.00	0.50			
184	D	594.84	383.64	6.00	70.00	0.00	0.00	0.50			
185	F	799.54	158.47	8.00	330.00	0.00	0.00	0.50			
186	H	780.49	132.70	8.00	29.00	0.00	0.00	0.50			
187	I	64.13	538.16	5.00	48.00	0.00	0.00	0.40			
188	I	87.03	517.08	5.00	48.00	0.00	0.00	0.40			
189	I	111.38	497.91	5.00	48.00	0.00	0.00	0.40			
190	I	136.46	479.56	5.00	48.00	0.00	0.00	0.40			
191	I	160.45	459.93	5.00	48.00	0.00	0.00	0.40			
192	I	181.25	440.39	5.00	42.00	0.00	0.00	0.40			
193	I	201.88	417.79	5.00	38.00	0.00	0.00	0.40			
194	I	224.60	396.05	5.00	48.00	0.00	0.00	0.40			
195	I	249.26	378.49	5.00	53.00	0.00	0.00	0.40			
196	I	273.95	361.17	5.00	52.00	0.00	0.00	0.40			
197	I	297.84	341.16	5.00	58.00	0.00	0.00	0.40			
198	I	323.20	321.70	5.00	45.00	0.00	0.00	0.40			
199	I	348.01	303.11	5.00	48.00	0.00	0.00	0.40			
200	I	373.31	285.07	5.00	55.00	0.00	0.00	0.40			
201	I	396.13	268.56	5.00	43.00	0.00	0.00	0.40			
202	I	417.09	249.61	5.00	77.00	0.00	0.00	0.40			
203	I	438.89	230.21	5.00	97.00	0.00	0.00	0.40			
204	I	461.42	208.14	5.00	171.00	0.00	0.00	0.40			
205	I	484.91	183.22	5.00	5.00	0.00	0.00	0.40			
206	I	509.11	155.04	5.00	142.00	0.00	0.00	0.40			
207	I	533.17	123.35	5.00	355.00	0.00	0.00	0.40			
208	I	557.81	88.68	5.00	226.00	0.00	0.00	0.40			
209	I	582.85	51.60	5.00	289.00	0.00	0.00	0.40			
210	I	608.93	12.41	5.00	203.00	0.00	0.00	0.40			
211	I	636.96	-15.08	5.00	172.00	0.00	0.00	0.40			
212	I	666.10	-57.06	5.00	148.00	0.00	0.00	0.40			
213	I	696.14	-123.36	5.00	148.00	0.00	0.00	0.40			
214	I	727.67	-179.91	5.00	148.00	0.00	0.00	0.40			
215	I	760.67	-237.46	5.00	148.00	0.00	0.00	0.40			
216	I	795.56	-295.32	5.00	148.00	0.00	0.00	0.40			

**Layout Continued**

ID	Type	X	Y	Height	Angle	Tilt	Cant	Out-reach	Target X	Target Y	Target Z
217	I	530.20	421.68	5.00	129.00	0.00	0.00	0.40			
218	I	553.69	439.94	5.00	123.00	0.00	0.00	0.40			
219	I	577.43	458.13	5.00	126.00	0.00	0.00	0.40			
220	I	447.30	385.17	5.00	117.00	0.00	0.00	0.40			
221	I	474.44	393.34	5.00	89.00	0.00	0.00	0.40			
222	I	484.18	399.27	5.00	0.00	0.00	0.00	0.40			
223	I	496.98	423.34	5.00	153.00	0.00	0.00	0.40			
224	I	569.58	385.24	5.00	90.00	0.00	0.00	0.40			
225	I	545.67	394.86	5.00	312.00	0.00	0.00	0.40			
226	I	546.78	386.45	5.00	310.00	0.00	0.00	0.40			
227	I	566.33	414.56	5.00	302.00	0.00	0.00	0.40			
228	I	581.85	429.68	5.00	210.00	0.00	0.00	0.40			
229	I	602.76	474.19	5.00	126.00	0.00	0.00	0.40			
230	I	628.29	487.86	5.00	126.00	0.00	0.00	0.40			
231	I	646.50	506.11	5.00	134.00	0.00	0.00	0.40			
232	I	571.36	446.42	5.00	209.00	0.00	0.00	0.40			
233	G	1021.25	84.61	10.00	177.00	0.00	0.00	0.50			
234	J	998.24	-75.27	10.00	175.00	5.00	0.00	2.00			
235	J	996.10	-92.71	10.00	175.00	5.00	0.00	2.00			
236	J	985.12	-179.50	10.00	175.00	5.00	0.00	2.00			

## Horizontal Illuminance (lux)

Grid 1

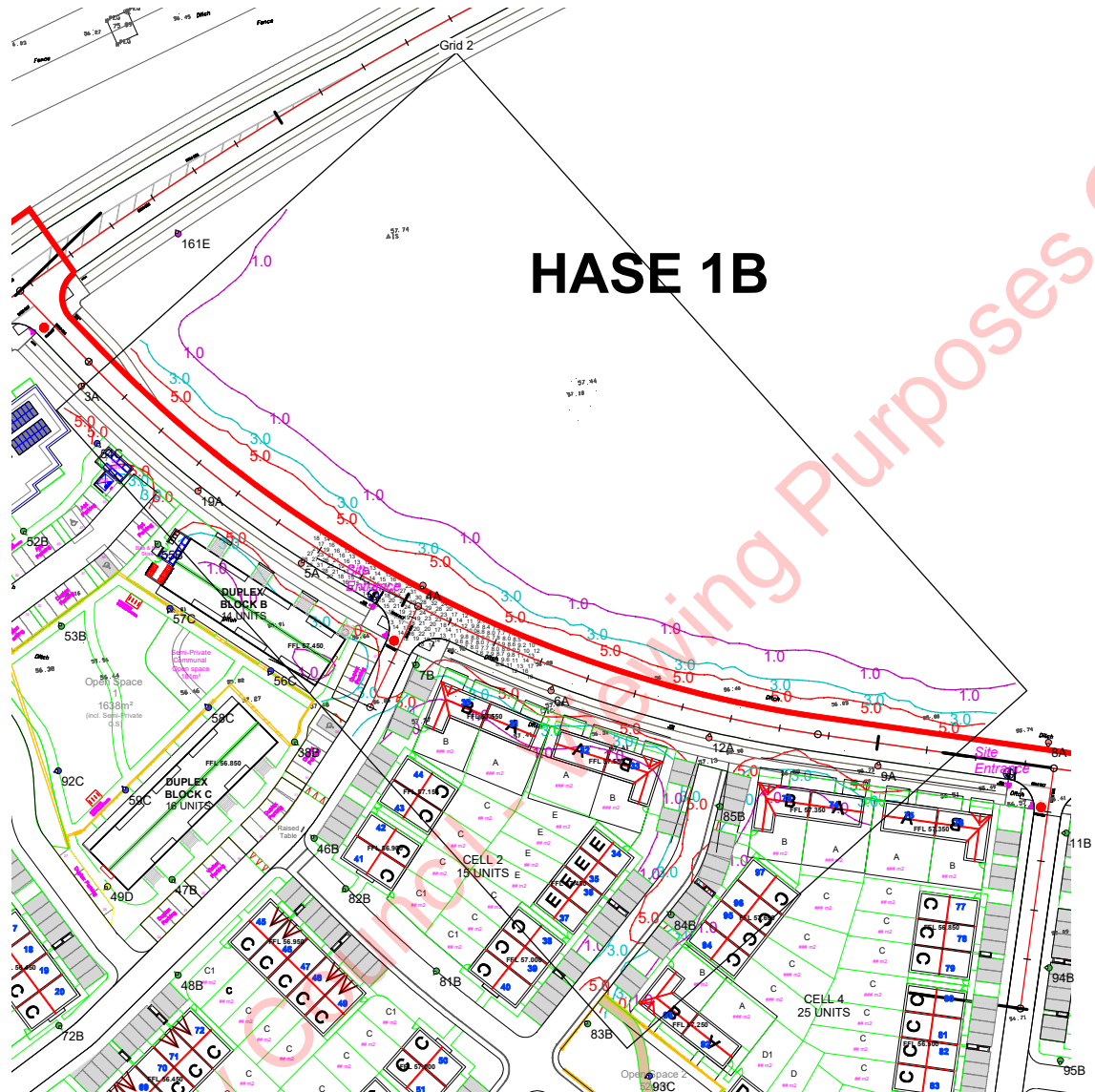


### Results

Eav	15.33
Emin	7.10
Emax	29.32
Emin/Emax	0.24
Emin/Eav	0.46

## Horizontal Illuminance (lux)

Grid 2

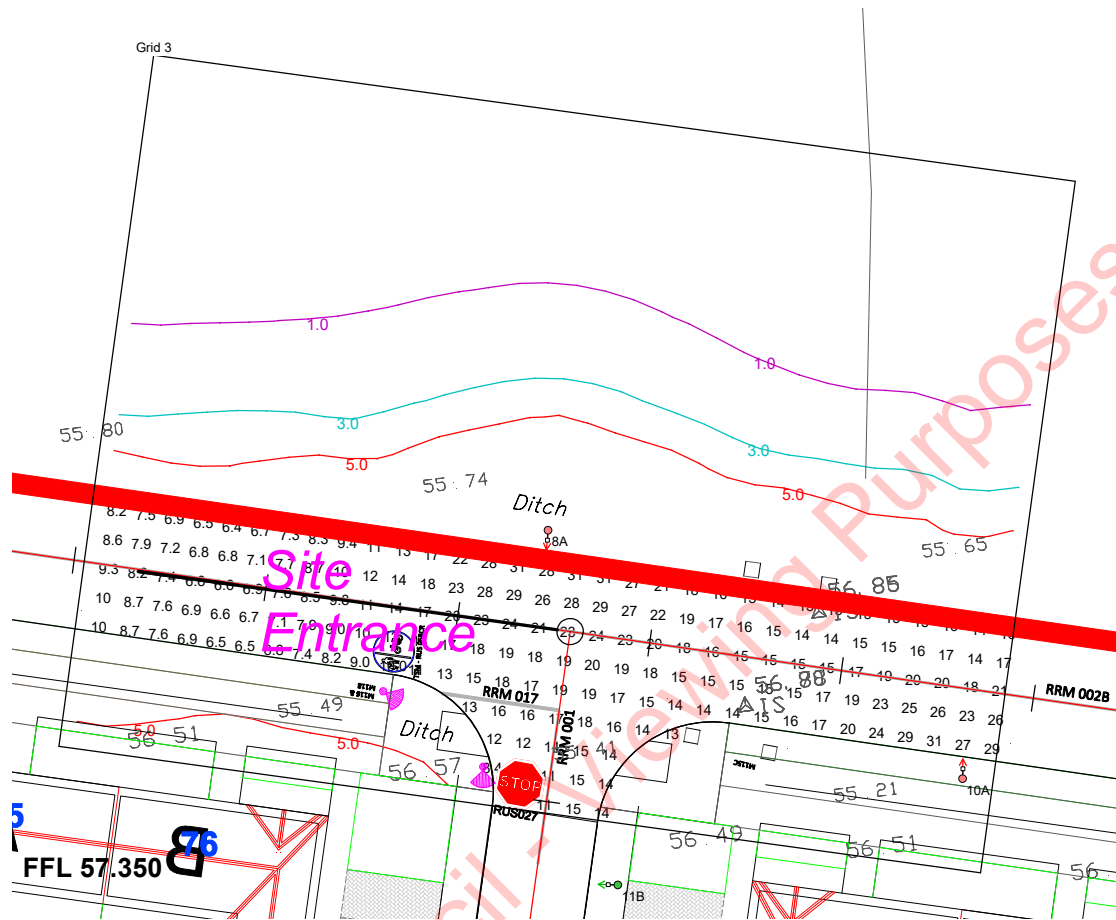


### Results

Eav	16.16
Emin	7.54
E <sub>max</sub>	32.17
E <sub>min</sub> /E <sub>max</sub>	0.23
E <sub>min</sub> /E <sub>av</sub>	0.47

## Horizontal Illuminance (lux)

Grid 3

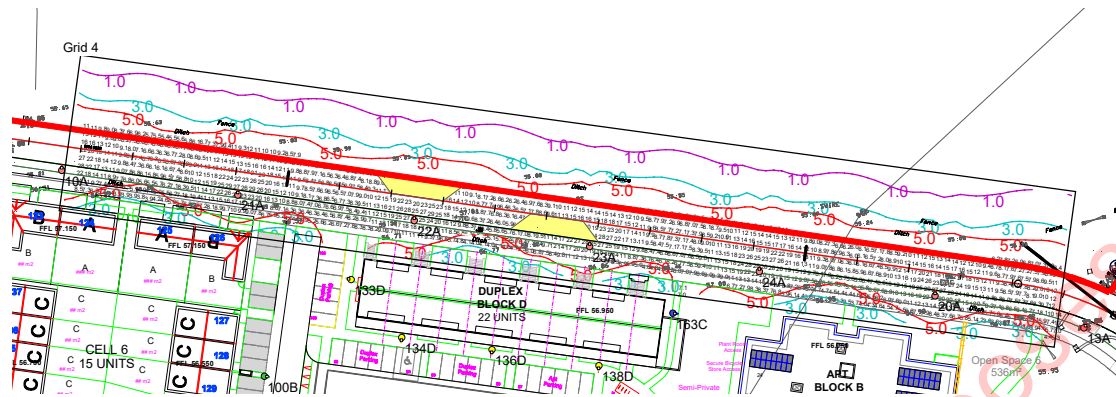


### Results

Eav	15.28
Emin	6.42
Emax	31.26
Emin/Emax	0.21
Emin/Eav	0.42

## Horizontal Illuminance (lux)

Grid 4



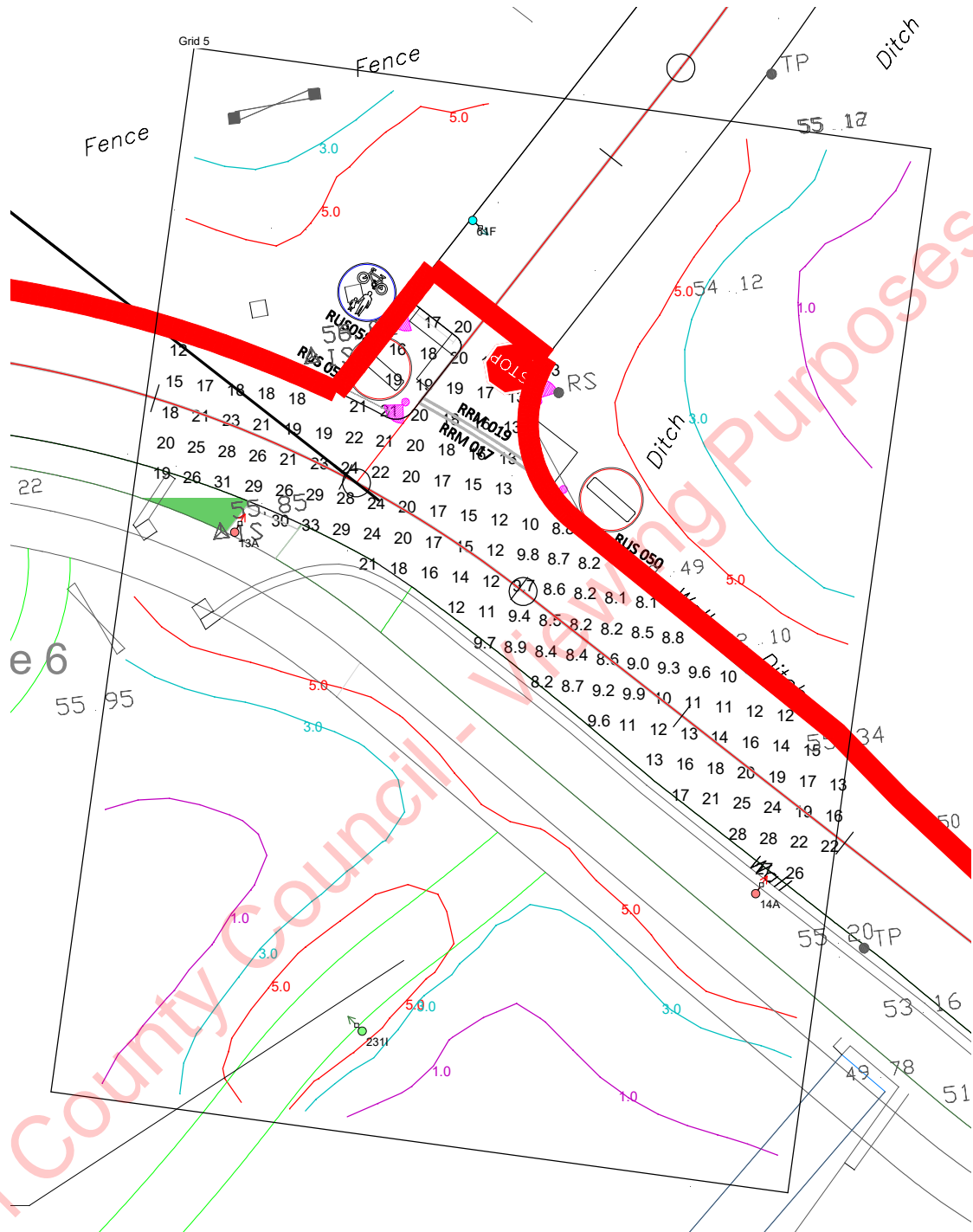
### Results

Eav	11.06
Emin	3.14
Emax	29.36
Emin/Emax	0.11
Emin/Eav	0.28

Meath County Council - Viewing Purposes Only!

## Horizontal Illuminance (lux)

Grid 5



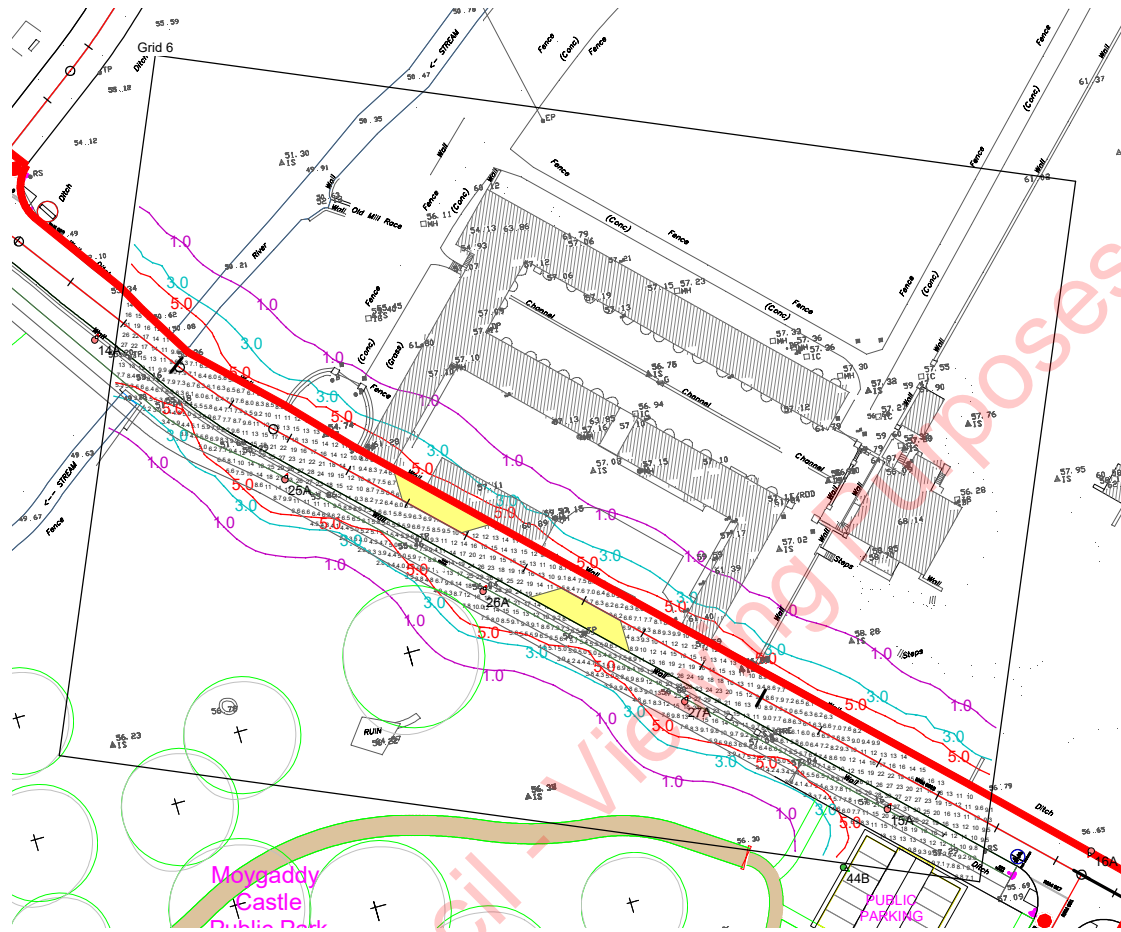
**Results**

Eav	16.70
Emin	8.10
Emax	32.64
Emin/Emax	0.25
Emin/Eav	0.49



# Horizontal Illuminance (lux)

Grid 6

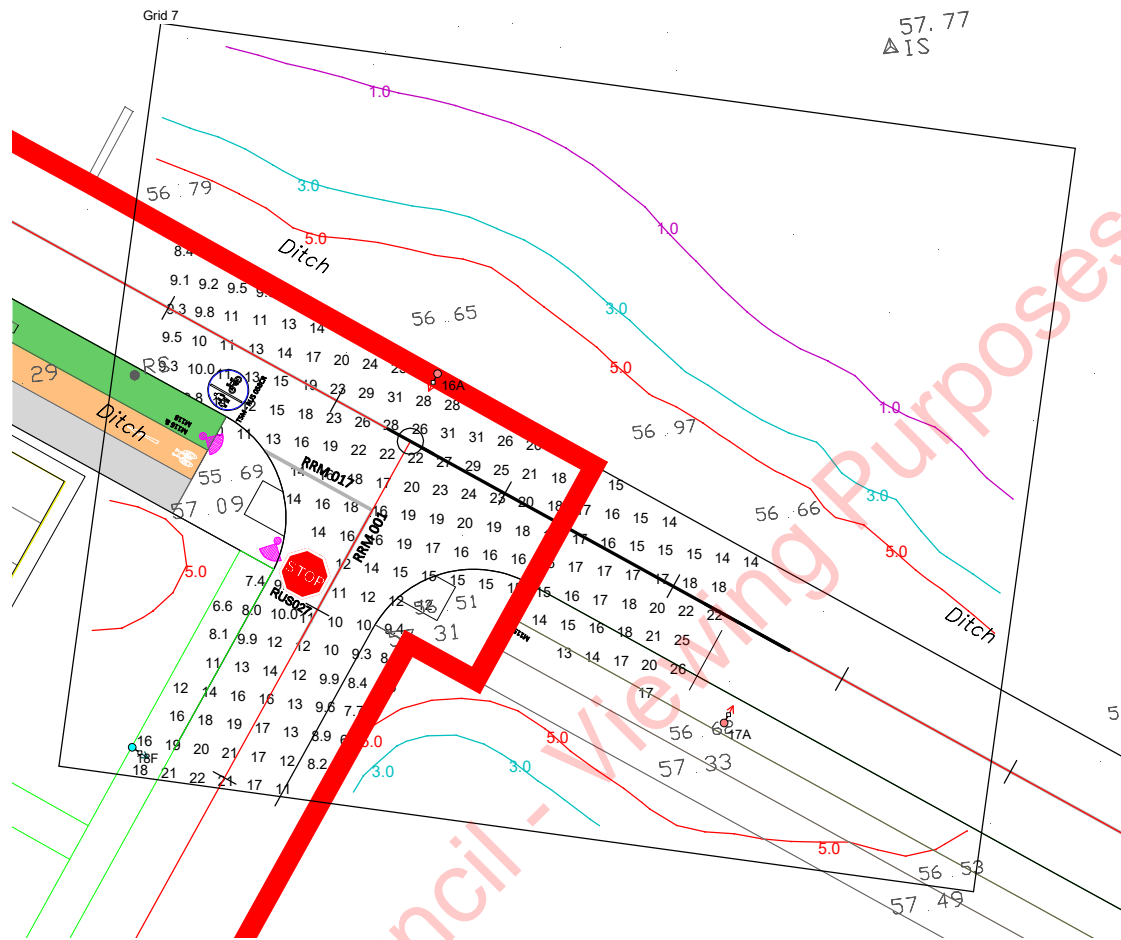


### Results

Eav	11.14
Emin	2.77
Emax	31.42
Emin/Emax	0.09
Emin/Eav	0.25

## Horizontal Illuminance (lux)

Grid 7

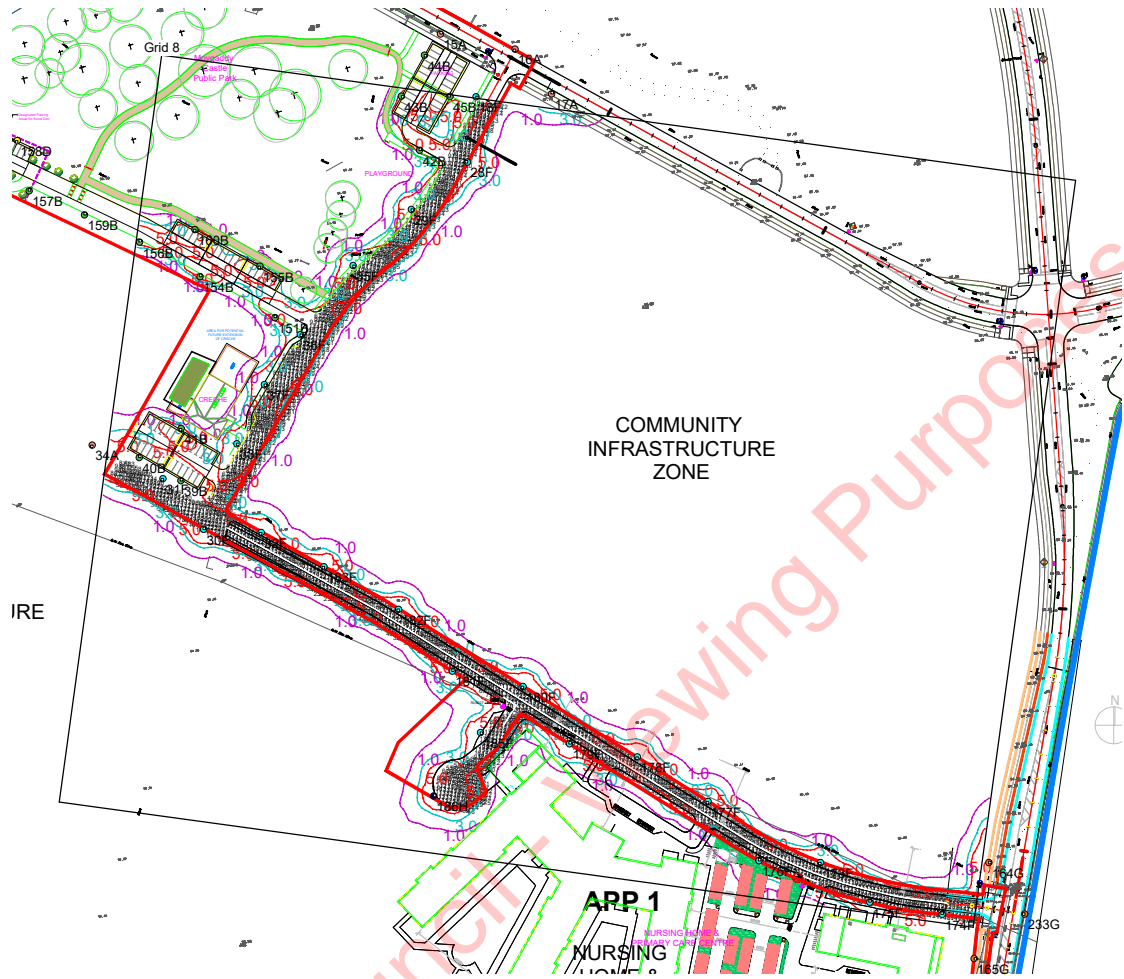


### Results

Eav	15.86
Emin	6.64
Emax	31.33
Emin/Emax	0.21
Emin/Eav	0.42

# Horizontal Illuminance (lux)

Grid 8

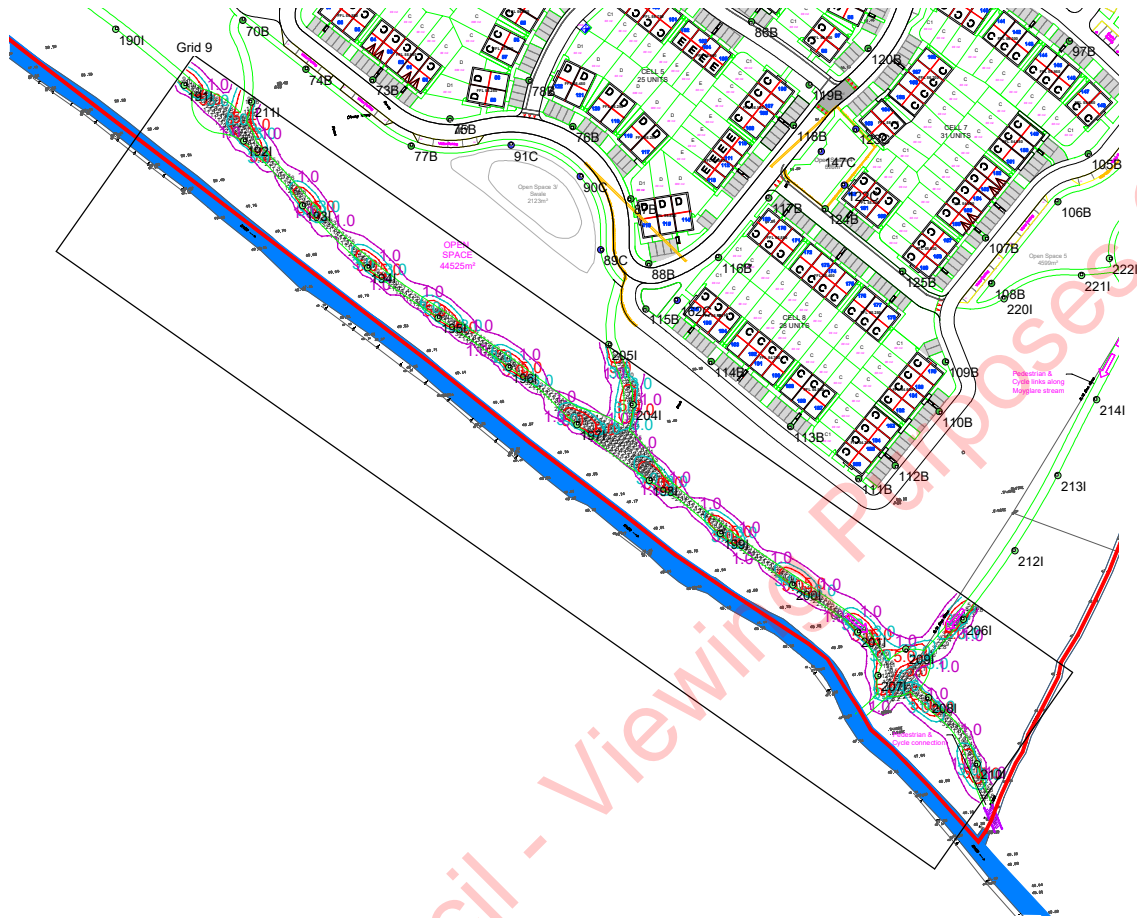


### Results

Eav	10.62
Emin	2.14
Emax	23.55
Emin/Emax	0.09
Emin/Eav	0.20

# Horizontal Illuminance (lux)

Grid 9



### Results

Eav	5.01
Emin	1.01
Emax	13.55
Emin/Emax	0.07
Emin/Eav	0.20

## Horizontal Illuminance (lux)

Grid 10

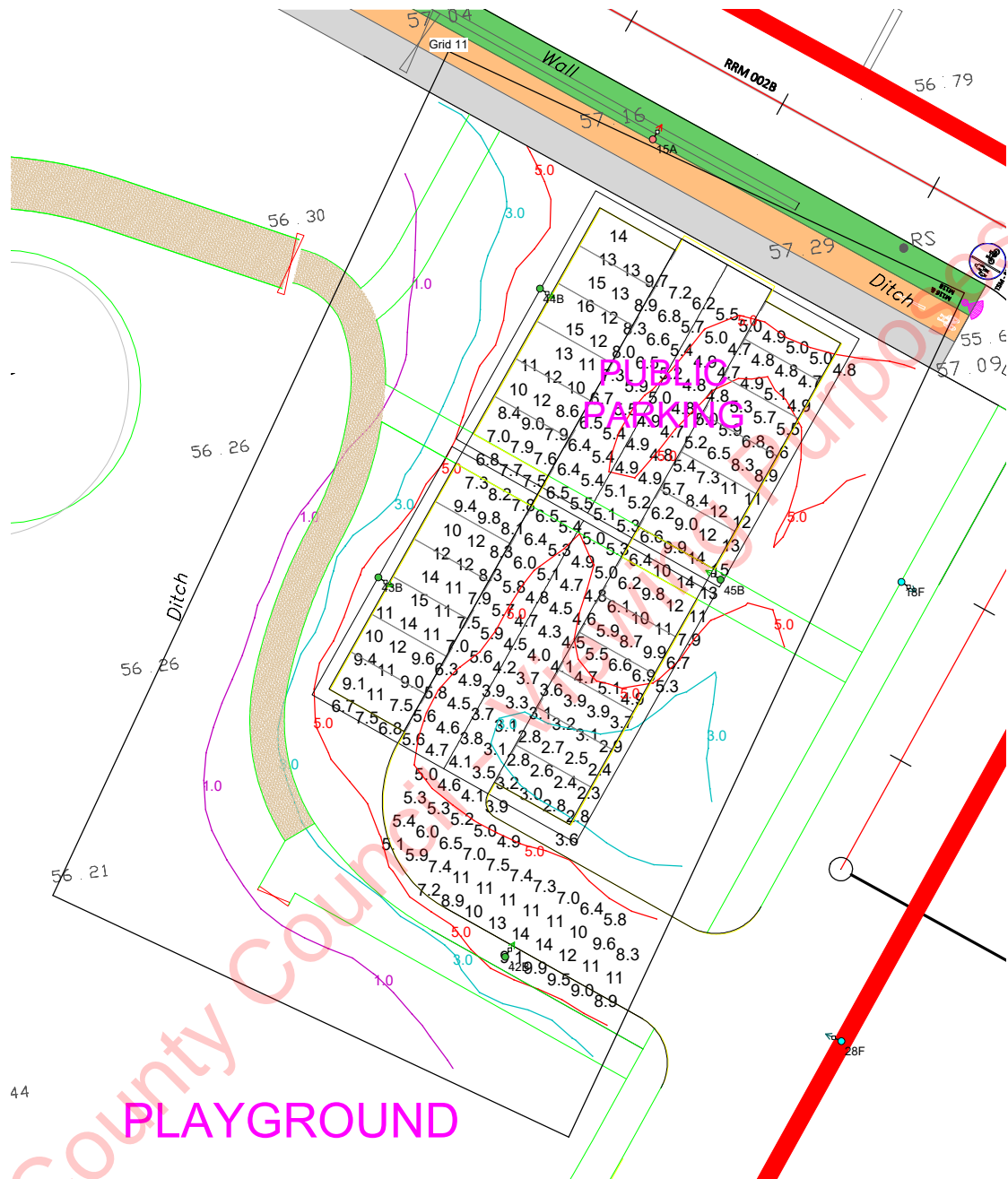


### Results

Eav	6.68
Emin	1.76
E <sub>max</sub>	17.97
E <sub>min</sub> /E <sub>max</sub>	0.10
E <sub>min</sub> /E <sub>av</sub>	0.26

# Horizontal Illuminance (lux)

Grid 11



### Results

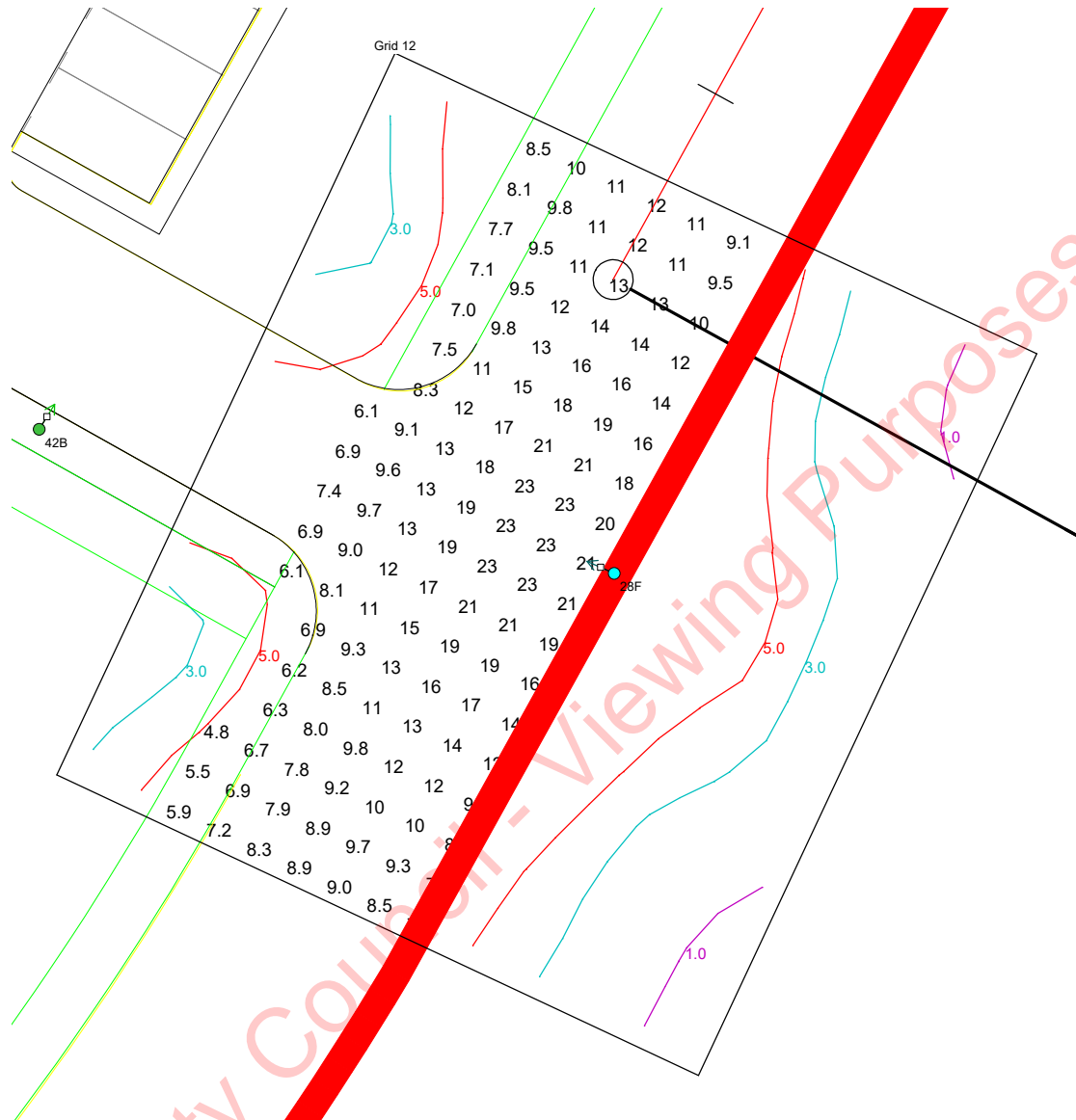
Eav	7.20
Emin	2.32
Emax	15.72
Emin/Emax	0.15
Emin/Eav	0.32

44

PLAYGROUND

## Horizontal Illuminance (lux)

Grid 12



### Results

Eav	12.26
Emin	4.81
Emax	23.42
Emin/Emax	0.21
Emin/Eav	0.39

# Horizontal Illuminance (lux)

Grid 13

HASE 1B



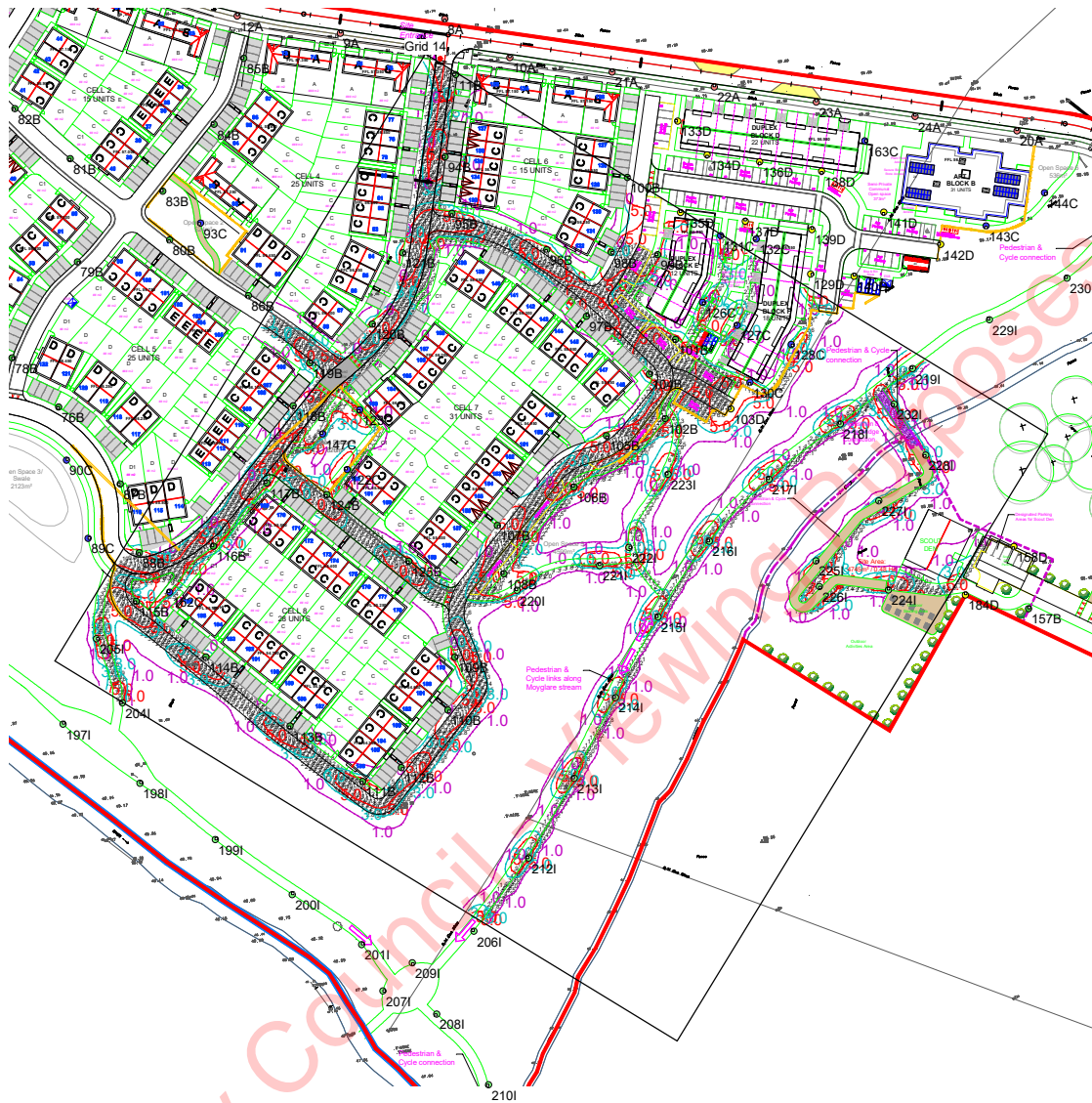
## Results

Eav	5.13
Emin	1.01
Emax	16.82
Emin/Emax	0.06
Emin/Eav	0.20



# Horizontal Illuminance (lux)

Grid 14

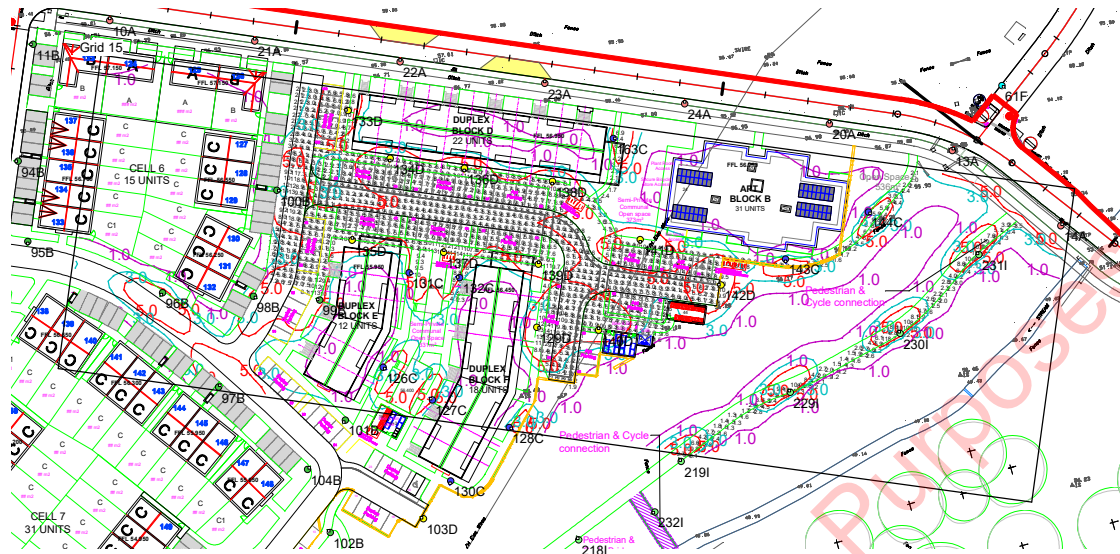


### Results

Eav	5.52
Emin	1.08
Emax	15.62
Emin/Emax	0.07
Emin/Eav	0.20

## Horizontal Illuminance (lux)

Grid 15

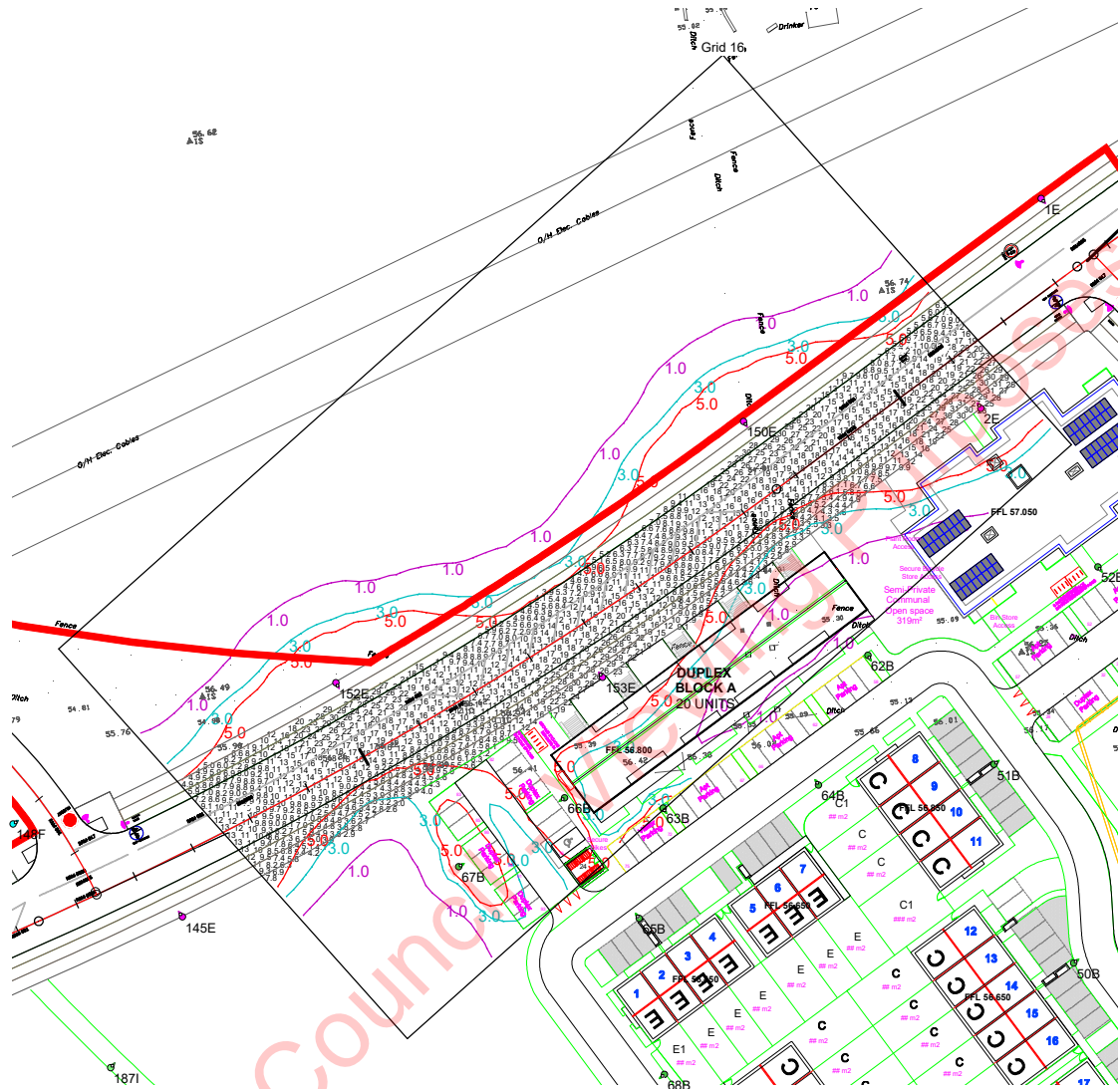


### Results

Eav	5.97
Emin	1.18
Emax	14.12
Emin/Emax	0.08
Emin/Eav	0.20

# Horizontal Illuminance (lux)

Grid 16

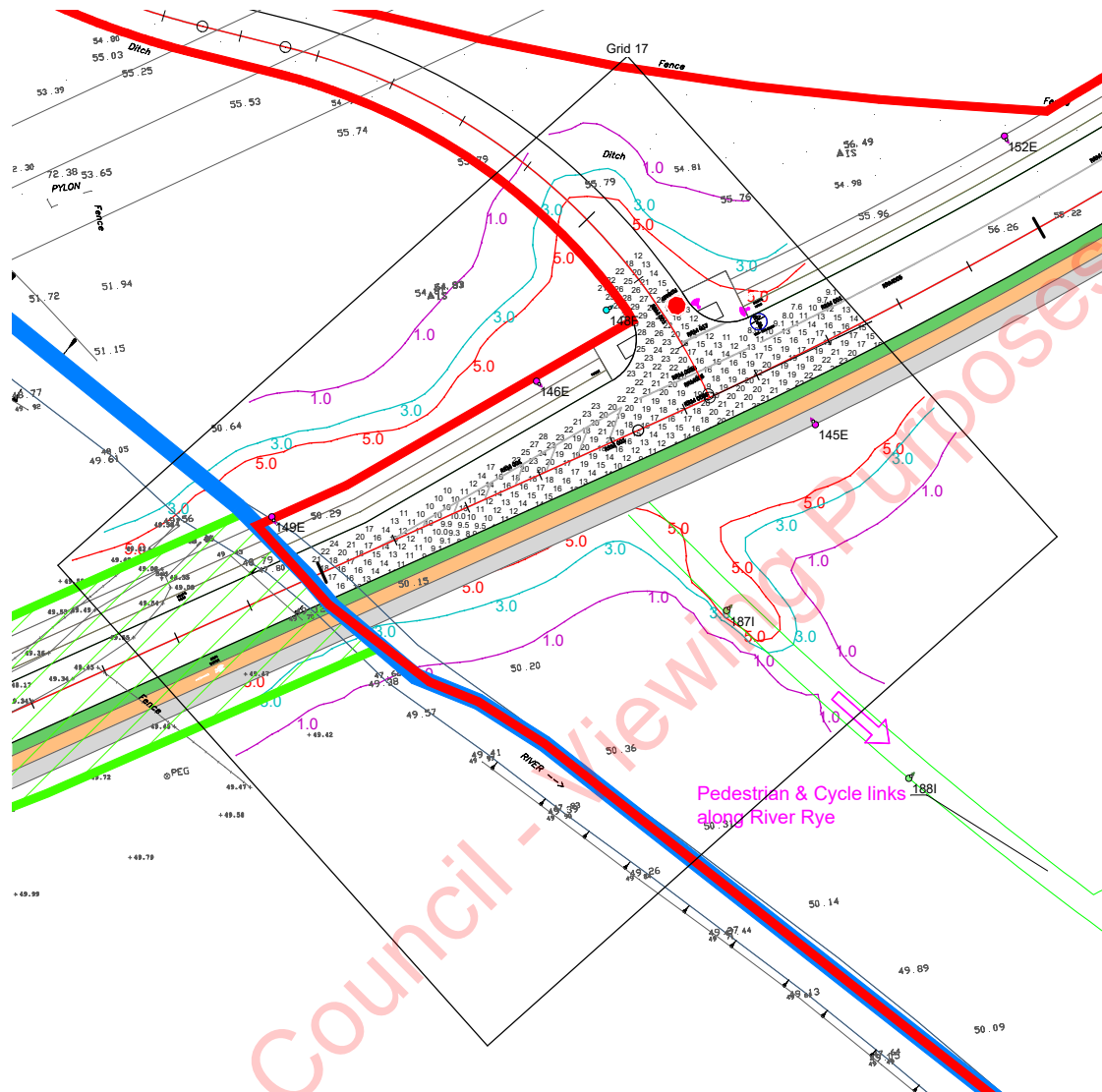


### Results

Eav	13.33
Emin	2.61
Emax	31.09
Emin/Emax	0.08
Emin/Eav	0.20

# Horizontal Illuminance (lux)

Grid 17



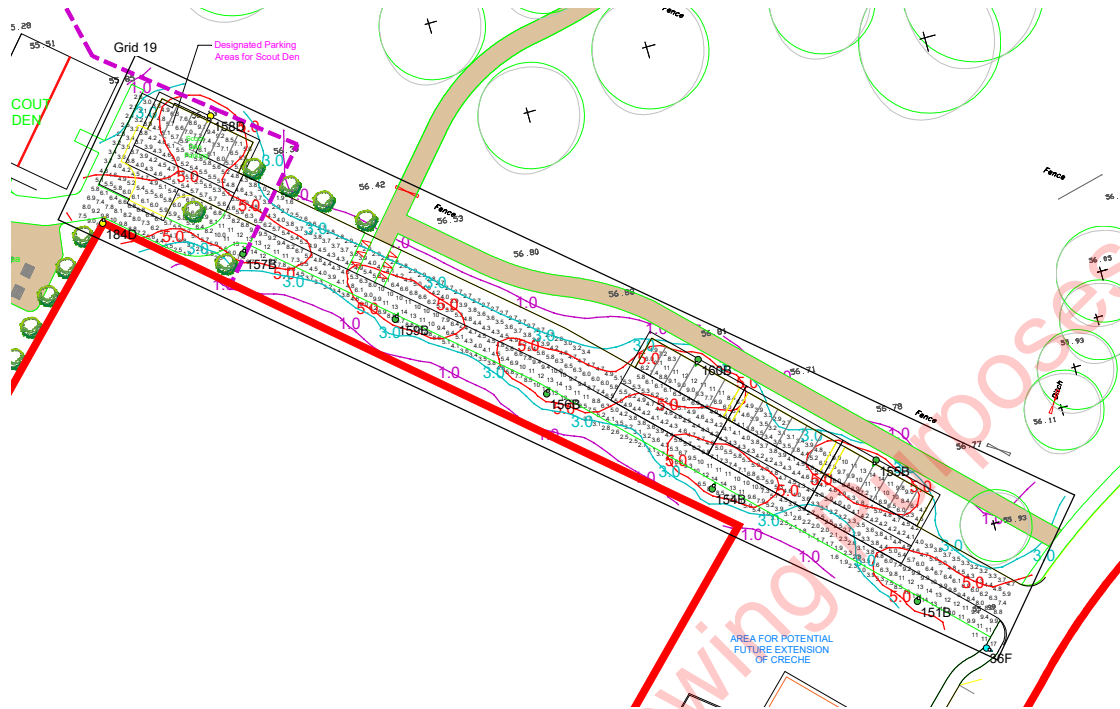
## Results

Eav	16.86
Emin	7.64
Emax	29.49
Emin/Emax	0.26
Emin/Eav	0.45

Meath County Council - Viewing Purposes Only!

## Horizontal Illuminance (lux)

Grid 19

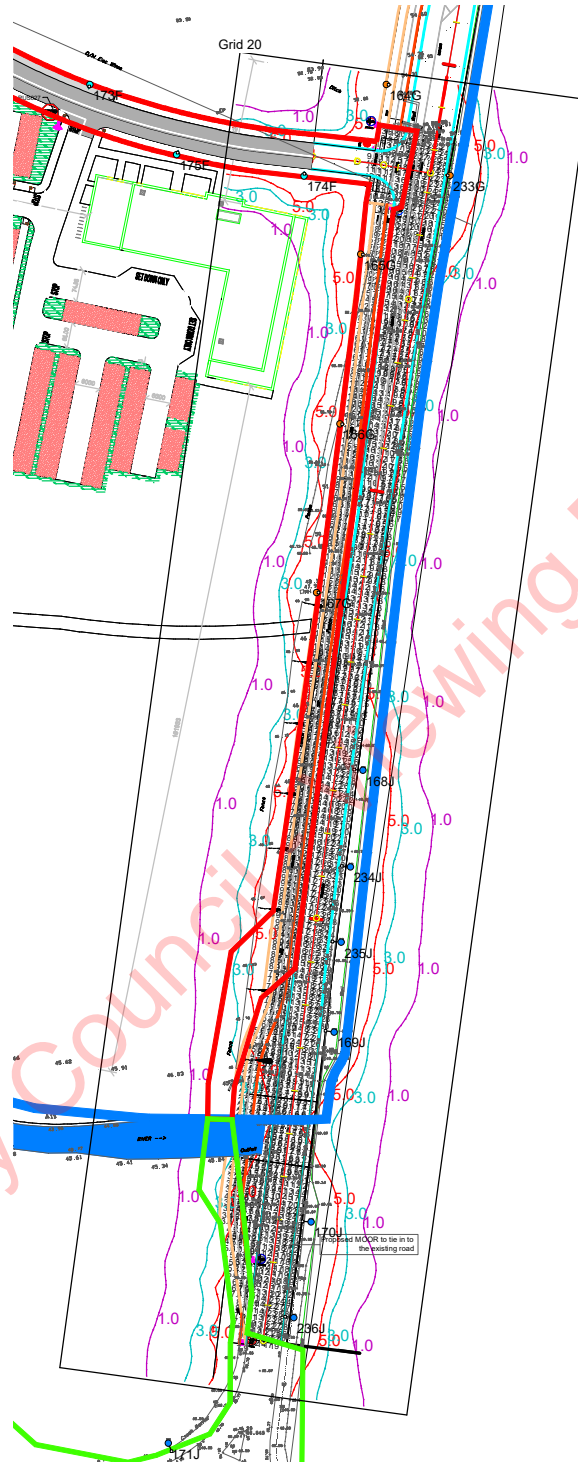


### Results

Eav	5.90
Emin	1.62
Emax	16.83
Emin/Emax	0.10
Emin/Eav	0.27

## Horizontal Illuminance (lux)

Grid 20



### Results

Eav	12.57
Emin	2.48
E <sub>max</sub>	33.97
E <sub>min</sub> /E <sub>max</sub>	0.07
E <sub>min</sub> /E <sub>av</sub>	0.20