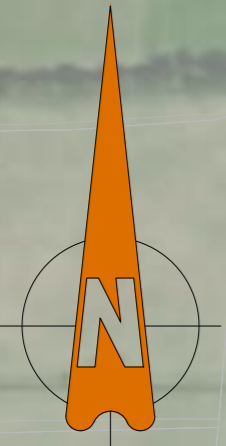




APPENDIX 4-2

SITE LAYOUT PLANNING
DRAWINGS

Meath County Council - Viewing Purposes Only!



WORKS TO BE CONSTRUCTED AS FUTURE PHASES OF DEVELOPMENT.

COORDINATES
IRISH GRID COORDINATES: E= 294911, N= 239184
ITM COORDINATES: E= 694842, N=739210

WORKS NORTH OF RIVER RYE HIGHLIGHTED RED WITHIN MEATH COUNTY COUNCIL JURISDICTION ARE SUBJECT TO SEPARATE APPLICATION TO KILDARE COUNTY COUNCIL.

WORKS SOUTH OF RIVER RYE HIGHLIGHTED GREEN WITHIN KILDARE COUNTY COUNCIL JURISDICTION ARE SUBJECT TO SEPARATE APPLICATION TO MEATH COUNTY COUNCIL.

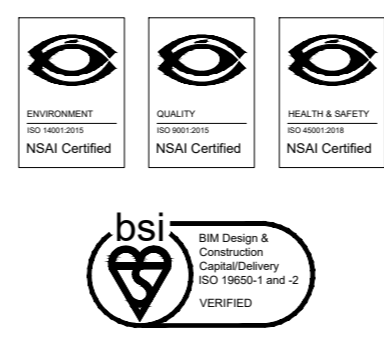


PLANNING DRAWING.
NOT FOR CONSTRUCTION.
ALL LEVELS GIVEN ARE
RELATIVE TO ORDNANCE DATUM.
THIS DRAWING HAS BEEN ISSUED FOR INFORMATION
PURPOSES ONLY AND MUST NOT BE USED
FOR CONSTRUCTION UNDER ANY CIRCUMSTANCES

© 2021 Microsoft Corporation © 2021 Maxar © C

• FOR SETTING OUT REFER TO ARCHITECT'S DRAWINGS.
• THIS DRAWING TO BE READ IN CONJUNCTION WITH ALL OTHER ARCHITECTURAL AND ENGINEERING DRAWINGS AND ALL OTHER RELEVANT DRAWINGS AND SPECIFICATIONS.
• DO NOT SCALE DRAWING. USE FIGURED DIMENSIONS ONLY.
• NO PART OF THIS DOCUMENT MAY BE REPRODUCED OR TRANSMITTED IN ANY FORM OR STORED IN ANY RETRIEVAL SYSTEM OF ANY NATURE WITHOUT THE WRITTEN PERMISSION OF O'CONNOR SUTTON CRONIN AS COPYRIGHT HOLDER EXCEPT AS AGREED FOR USE ON THE PROJECT FOR WHICH THE DOCUMENT WAS ORIGINALLY ISSUED.

Rev No.	Date	Revision Note	Drn by	Chkd by
P01	11/01/22	SUITABLE FOR INFORMATION	RM	MK
P02	26/01/22	SUITABLE FOR INFORMATION	SMG	MK
P03	17/02/22	SUITABLE FOR INFORMATION	RM	SMG
P04	08/04/22	SUITABLE FOR INFORMATION	RM	WM
P05	25/08/22	FOR PLANNING	RM	WM



Head Office,
9 Prussia Street,
Dublin 7,
D07 KT57

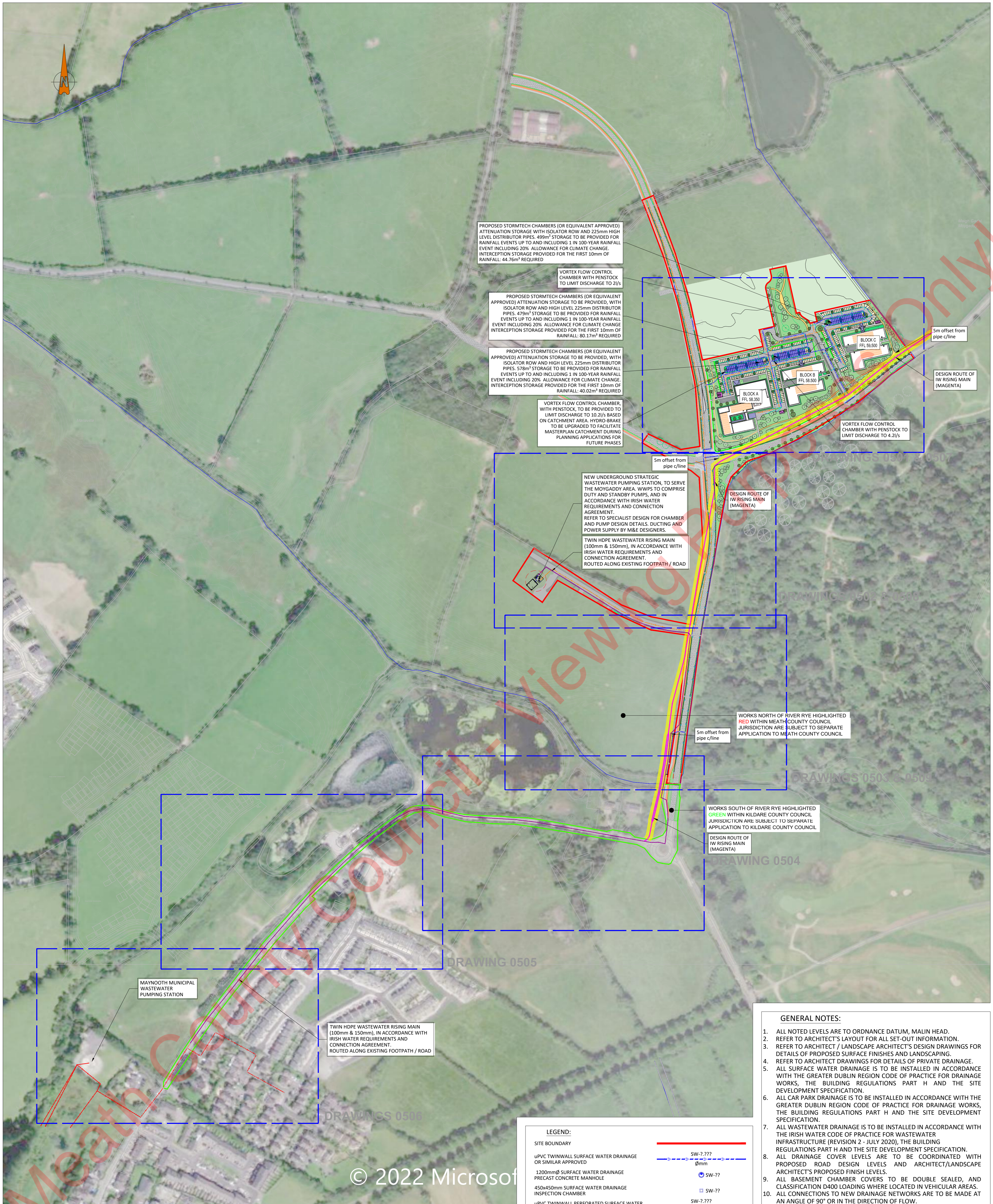
TEL +353 (0)1 8682000
e: contactus@ocsc.ie
w: www.ocsc.ie



Dublin | London | Belfast | Galway | Cork | Birmingham

Client: SKY CASTLE LTD
Project: STRATEGIC EMPLOYMENT ZONE (BIOTECHNOLOGY & LIFE SCIENCES CAMPUS) DEVELOPMENT PHASE 1
Title: SITE LOCATION PLAN

Code | Originator | Zone | Level | Type | Role | Number | Status | Revision
S665 - OCSC - 1A - MH - DR - C - 0100 - S4 - P05
Date: DEC'21 Scale: 1:2500@ A1 Drn by:RM Chkd by:SMG Aprvd by:MK



PROPOSED STORMTECH CHAMBERS (OR EQUIVALENT APPROVED) ATTENUATION STORAGE WITH ISOLATOR ROW AND 225mm HIGH LEVEL DISTRIBUTOR PIPES. 499m³ STORAGE TO BE PROVIDED FOR RAINFALL EVENTS UP TO AND INCLUDING 1 IN 100-YEAR RAINFALL EVENT INCLUDING 20% ALLOWANCE FOR CLIMATE CHANGE. INTERCEPTION STORAGE PROVIDED FOR THE FIRST 10mm OF RAINFALL: 44.76m³ REQUIRED

VORTEX FLOW CONTROL CHAMBER WITH PENSTOCK TO LIMIT DISCHARGE TO 2 2/5

PROPOSED STORMTECH CHAMBERS (OR EQUIVALENT APPROVED) ATTENUATION STORAGE TO BE PROVIDED, WITH ISOLATOR ROW AND HIGH LEVEL 225mm DISTRIBUTOR PIPES. 479m³ STORAGE TO BE PROVIDED FOR RAINFALL EVENTS UP TO AND INCLUDING 1 IN 100-YEAR RAINFALL EVENT INCLUDING 20% ALLOWANCE FOR CLIMATE CHANGE. INTERCEPTION STORAGE PROVIDED FOR THE FIRST 10mm OF RAINFALL: 80.17m³ REQUIRED

PROPOSED STORMTECH CHAMBERS (OR EQUIVALENT APPROVED) ATTENUATION STORAGE TO BE PROVIDED, WITH ISOLATOR ROW AND HIGH LEVEL 225mm DISTRIBUTOR PIPES. 578m³ STORAGE TO BE PROVIDED FOR RAINFALL EVENTS UP TO AND INCLUDING 1 IN 100-YEAR RAINFALL EVENT INCLUDING 20% ALLOWANCE FOR CLIMATE CHANGE. INTERCEPTION STORAGE PROVIDED FOR THE FIRST 10mm OF RAINFALL: 40.02m³ REQUIRED

VORTEX FLOW CONTROL CHAMBER, WITH PENSTOCK, TO BE PROVIDED TO LIMIT DISCHARGE TO 10.2/5 BASED ON CATCHMENT AREA. HYDRO-BRAKE TO BE UPGRADED TO FACILITATE MASTERPLAN CATCHMENT DURING PLANNING APPLICATIONS FOR FUTURE PHASES

NEW UNDERGROUND STRATEGIC WASTEWATER PUMPING STATION, TO SERVE THE MOYGADDY AREA. WWPS TO COMPRISE DUTY AND STANDBY PUMPS, AND IN ACCORDANCE WITH IRISH WATER REQUIREMENTS AND CONNECTION AGREEMENT. REFER TO SPECIALIST DESIGN FOR CHAMBER AND PUMP DESIGN DETAILS, DUCTING AND POWER SUPPLY BY M&E DESIGNERS.

TWIN HDPE WASTEWATER RISING MAIN (100mm & 150mm), IN ACCORDANCE WITH IRISH WATER REQUIREMENTS AND CONNECTION AGREEMENT. ROUTED ALONG EXISTING FOOTPATH / ROAD

DESIGN ROUTE OF IW RISING MAIN (MAGENTA)

DESIGN ROUTE OF IW RISING MAIN (MAGENTA)

WORKS NORTH OF RIVER RYE HIGHLIGHTED RED WITHIN MEATH COUNTY COUNCIL JURISDICTION ARE SUBJECT TO SEPARATE APPLICATION TO MEATH COUNTY COUNCIL

WORKS SOUTH OF RIVER RYE HIGHLIGHTED GREEN WITHIN KILDARE COUNTY COUNCIL JURISDICTION ARE SUBJECT TO SEPARATE APPLICATION TO KILDARE COUNTY COUNCIL

MAYNOOTH MUNICIPAL WASTEWATER PUMPING STATION

TWIN HDPE WASTEWATER RISING MAIN (100mm & 150mm), IN ACCORDANCE WITH IRISH WATER REQUIREMENTS AND CONNECTION AGREEMENT. ROUTED ALONG EXISTING FOOTPATH / ROAD

LEGEND:

SITE BOUNDARY	—
UPVC TWINWALL SURFACE WATER DRAINAGE OR SIMILAR APPROVED	SW-? ??? Ømm
1200mmØ SURFACE WATER DRAINAGE PRECAST CONCRETE MANHOLE	Ømm
450x450mm SURFACE WATER DRAINAGE INSPECTION CHAMBER	SW-??
UPVC TWINWALL PERFORATED SURFACE WATER DRAINAGE OR SIMILAR APPROVED	SW-? ??? Ømm
FILTER DRAIN	—
SURFACE WATER ATTENUATION	—
PERVIOUS PAVING (LOOSE GRAVEL SURFACE, OR SIMILAR APPROVED)	—
KLARGESTER CLASS I FULL RETENTION NSFA FUEL SEPARATOR	NSFA010
PROPOSED WASTEWATER RISING MAIN	—
UPVC S88 WASTEWATER DRAINAGE OR SIMILAR APPROVED	WW-? ??? Ømm
1200mmØ WASTEWATER DRAINAGE PRECAST CONCRETE MANHOLE	Ømm

- GENERAL NOTES:**
- ALL NOTED LEVELS ARE TO ORDNANCE DATUM, MALIN HEAD.
 - REFER TO ARCHITECT'S LAYOUT FOR ALL SET-OUT INFORMATION.
 - REFER TO ARCHITECT / LANDSCAPE ARCHITECT'S DESIGN DRAWINGS FOR DETAILS OF PROPOSED SURFACE FINISHES AND LANDSCAPING.
 - REFER TO ARCHITECT DRAWINGS FOR DETAILS OF PRIVATE DRAINAGE.
 - ALL SURFACE WATER DRAINAGE IS TO BE INSTALLED IN ACCORDANCE WITH THE GREATER DUBLIN REGION CODE OF PRACTICE FOR DRAINAGE WORKS, THE BUILDING REGULATIONS PART H AND THE SITE DEVELOPMENT SPECIFICATION.
 - ALL CAR PARK DRAINAGE IS TO BE INSTALLED IN ACCORDANCE WITH THE GREATER DUBLIN REGION CODE OF PRACTICE FOR DRAINAGE WORKS, THE BUILDING REGULATIONS PART H AND THE SITE DEVELOPMENT SPECIFICATION.
 - ALL WASTEWATER DRAINAGE IS TO BE INSTALLED IN ACCORDANCE WITH THE IRISH WATER CODE OF PRACTICE FOR WASTEWATER INFRASTRUCTURE (REVISION 2 - JULY 2020), THE BUILDING REGULATIONS PART H AND THE SITE DEVELOPMENT SPECIFICATION.
 - ALL DRAINAGE COVER LEVELS ARE TO BE COORDINATED WITH PROPOSED ROAD DESIGN LEVELS AND ARCHITECT/LANDSCAPE ARCHITECT'S PROPOSED FINISH LEVELS.
 - ALL BASEMENT CHAMBER COVERS TO BE DOUBLE SEALED, AND CLASSIFICATION D400 LOADING WHERE LOCATED IN VEHICULAR AREAS.
 - ALL CONNECTIONS TO NEW DRAINAGE NETWORKS ARE TO BE MADE AT AN ANGLE OF 90° OR IN THE DIRECTION OF FLOW.
 - REFER TO ARCHITECT AND M&E ENGINEERING DESIGN DRAWINGS FOR CONFIRMATION OF LOCATION AND SPECIFICATION OF FLOOR GULLIES.
 - REFER TO M&E ENGINEERING DESIGN FOR CONFIRMATION OF WASTE AND SANITARY POP-UP/OUTLET LOCATIONS.
 - THE CONTRACTOR IS TO VERIFY INVERT LEVEL AT PROPOSED CONNECTION TO EXISTING SEWERS, PRIOR TO ANY OTHER WORKS BEING CARRIED OUT, AND MAKE ANY DISCREPANCIES KNOWN TO THE ENGINEER.
 - THE CONTRACTOR IS RESPONSIBLE FOR CONFIRMATION OF PRESENCE ALL EXISTING UTILITIES, IF ANY, ALONG ROUTE OF PROPOSED DRAINAGE NETWORKS - BY INTRUSIVE INVESTIGATION OR EQUAL.
 - EXISTING PUBLIC SEWER TO BE JET CLEANED AND CCTV SURVEYED PRIOR TO, AND AFTER PROPOSED CONNECTIONS FROM NEW NETWORK.
 - ALL NEW DRAINAGE INFRASTRUCTURE TO BE JET CLEANED AND CCTV SURVEYED, WITH ANY NOTED DEFECTS REMEDIATED, ON COMPLETION OF WORKS, TO THE SATISFACTION OF THE LOCAL AUTHORITY.

PLANNING DRAWING.
NOT FOR CONSTRUCTION.
ALL LEVELS GIVEN ARE RELATIVE TO ORDNANCE DATUM.
THIS DRAWING HAS BEEN ISSUED FOR INFORMATION PURPOSES ONLY AND MUST NOT BE USED FOR CONSTRUCTION UNDER ANY CIRCUMSTANCES

Rev No.	Date	Revision Note	Drn by	Chkd by
P01	10/01/22	SUITABLE FOR INFORMATION	RM	MK
P02	15/02/22	SUITABLE FOR INFORMATION	EH	MK
P03	08.04.22	SUITABLE FOR INFORMATION	EH	MK
P04	28.04.2022	SUITABLE FOR INFORMATION	EH	MK
P05	22.08.22	SUITABLE FOR PLANNING	EH	MK

© 2022 Microsoft

Head Office,
9 Prussia Street,
Dublin 7,
D07 KT57

TEL +353 (0)1 8682000

e: contactus@ocsc.ie
w: www.ocsc.ie

Dublin | London | Belfast | Galway | Cork | Birmingham

OCSC
O'CONNOR | SUTTON | CRONIN
Multi-disciplinary
Consulting Engineers

Client: SKY CASTLE LTD
Project: STRATEGIC EMPLOYMENT ZONE (BIOTECHNOLOGY & LIFE SCIENCES CAMPUS) DEVELOPMENT PHASE 1
Title: PROPOSED DRAINAGE LAYOUT MASTERPLAN

Code	Originator	Zone	Level	Type	Role	Number	Status	Revision
S665	OCSC	1A	MH	DR	C	0500	S4	P05

Date: DEC'21 Scale: 1:1250@ A1 Drn by:EH Chkd by:MK Aprvd by:MK