



Figure 30 The site entrance (Site A)
Figure 31 Site A, looking to the east



Figure 32 Site A, the ramp end (Moore Lane)
Figure 33 No. 42 O'Connell Street



Figure 34 The building on Moore Street
Figure 35 Trench 1, from the north: concrete slab



Figure 36



Figure 37

Trench 2, from the south

Trench 2 from the east



Figure 38



Figure 39

Trench 3, from the south

Trench 4, from the west

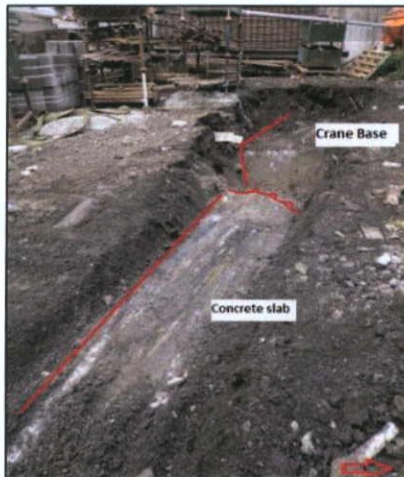


Figure 40

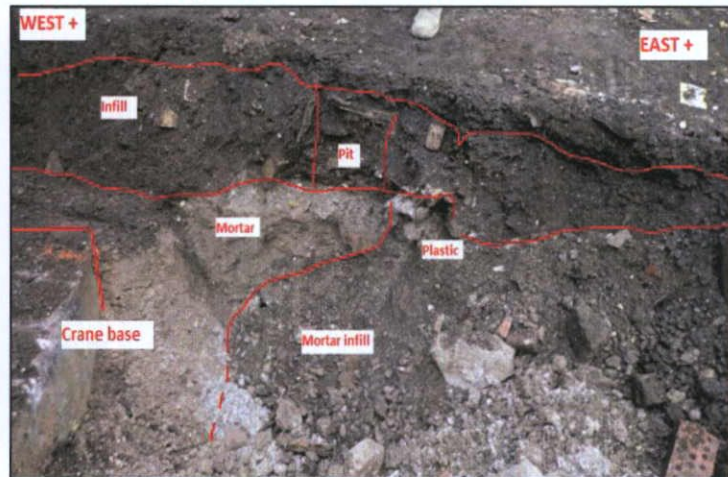


Figure 41 The organic deposits from the south



Figure 42 The infill from Trench 4



Figure 43 Trench 5, from the east



Figure 44 Trench 5, from the north



Figure 45 Trench 1, from the east



Figure 46 Trench 1 from the north east



Figure 47 Trench 1, north section, from the S

Figure 48 Fire-reddened clay and timbers



Figure 49 Yellow/orange clays and gravels



Figure 50 Gravels at the base of Trench 1



Figure 51 Trench 2 from the south



Figure 52 Trench 2 from the south: infill deposits



Figure 53 The expanding trench



Figure 54 The gravels at 4m below present ground level



Figure 55 Trench 3, from the east



Figure 56 Trench 3, infill



Figure 57 The floor abutting the wall foundation



Figure 58 Foundation from the east



Figure 59 The northern face: note modern debris



Figure 60 The structure from the north



Figure 61 Site A: Goad's map, dated 1891

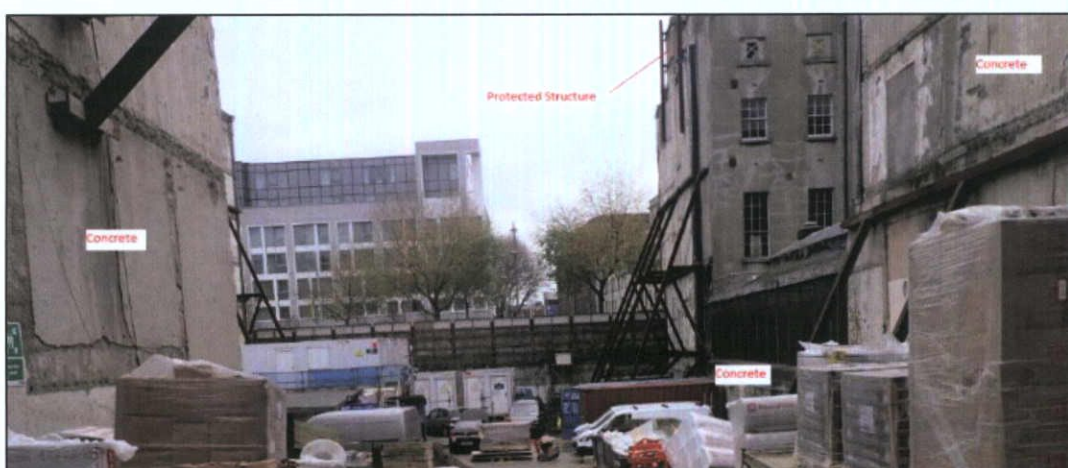


Figure 62 Concrete boundaries from the south



Figure 63 The north wall

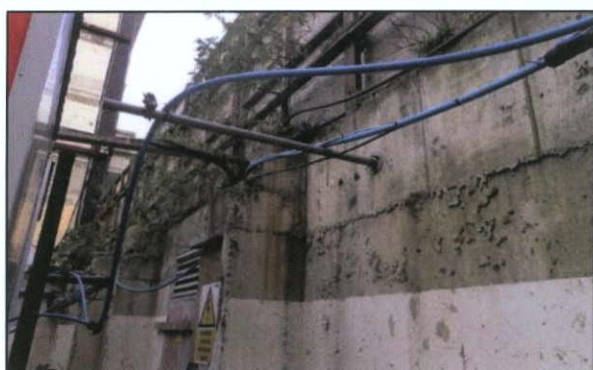


Figure 64 Eastern wall



Figure 65 The south wall, east end



Figure 66 The south wall, west end

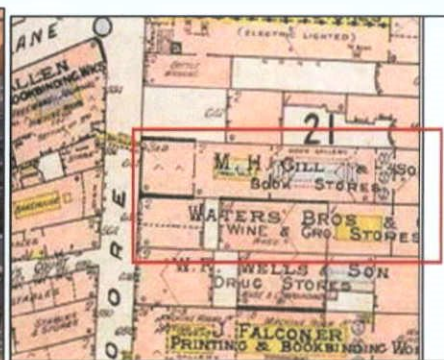


Figure 67 : Site B: Goad's insurance map, 1893

DDC PLAN NO 5432/22
D: 13/12/2022

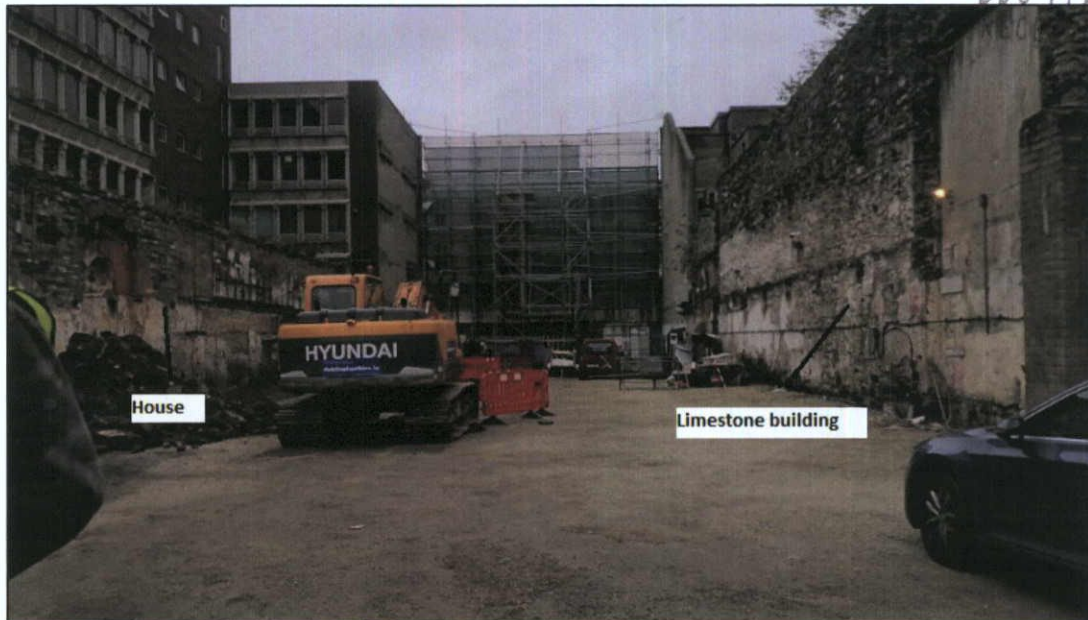


Figure 68 Site from the west

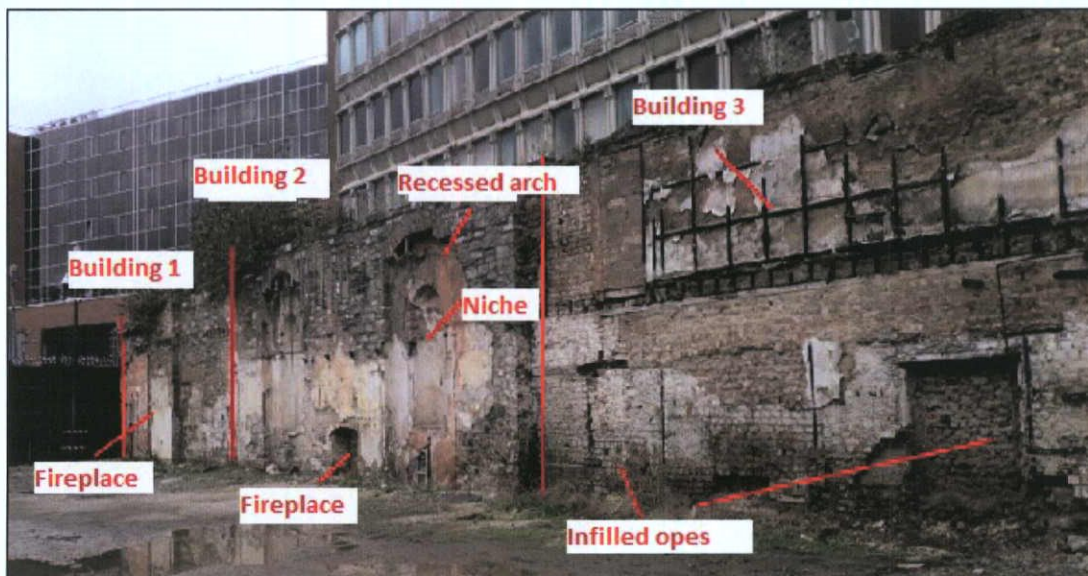


Figure 69 SITE B, Buildings 1 -3, from the east

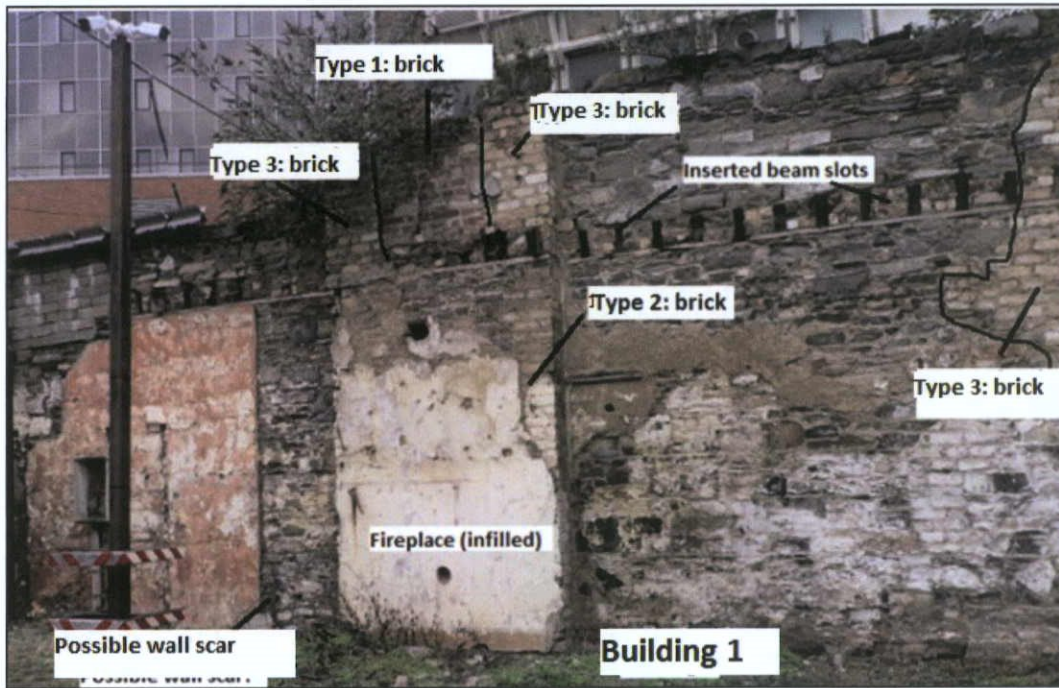


Figure 70 Building 1, from the south

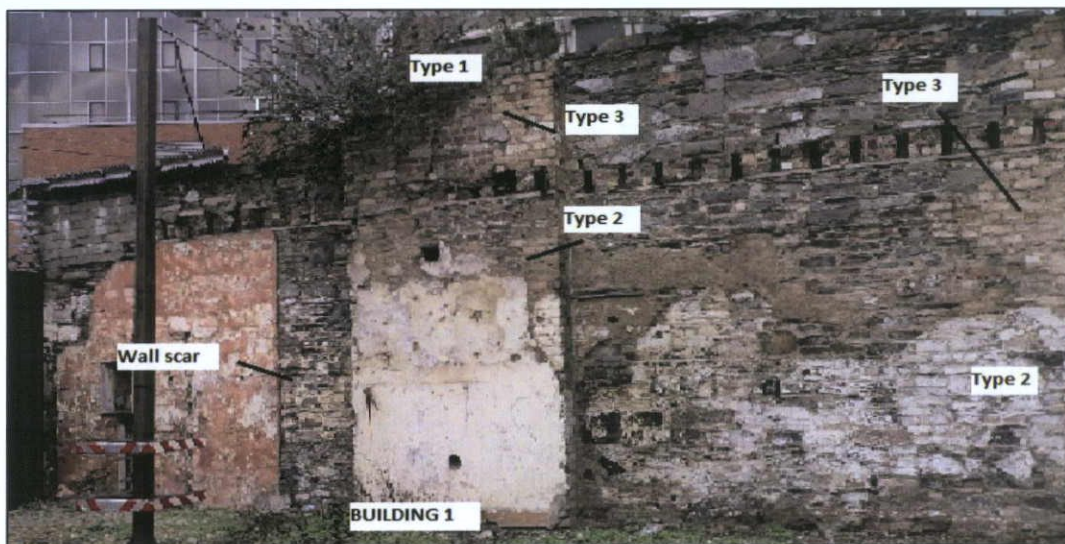


Figure 71 Building 1, east end

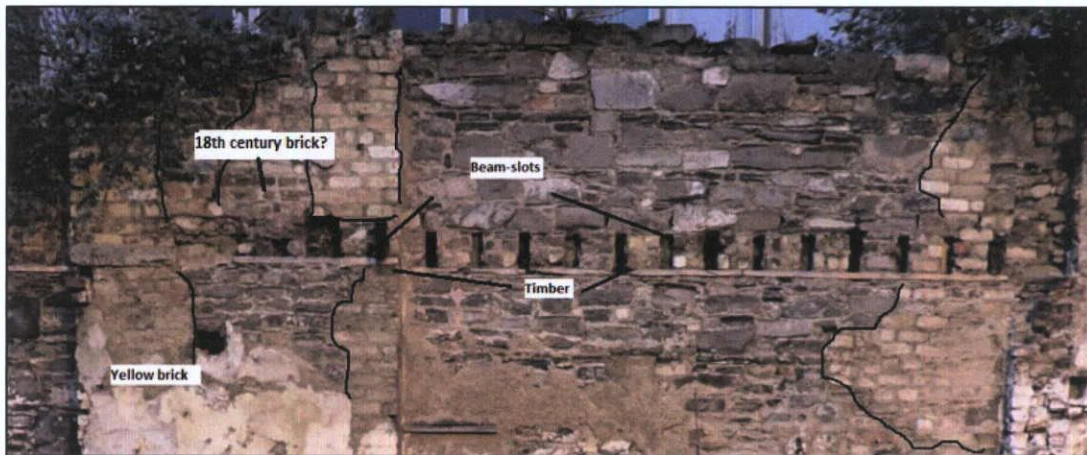


Figure 72 Building 1 (first floor)

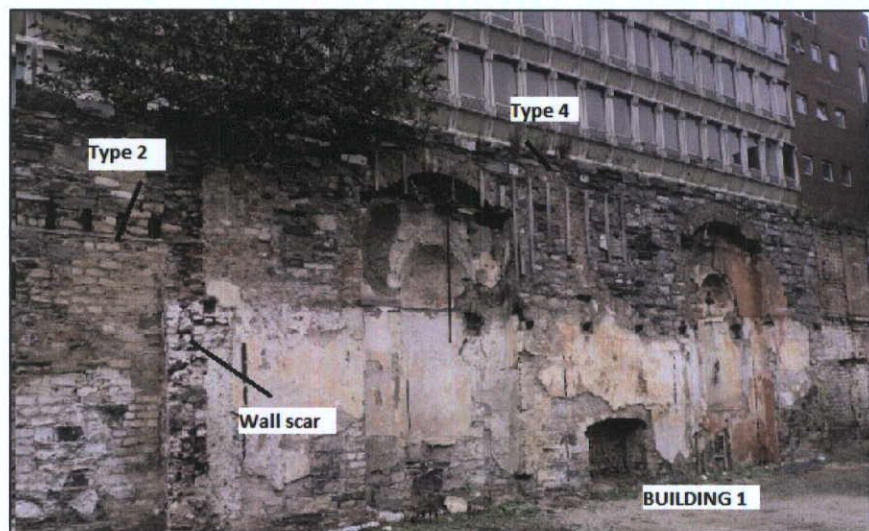


Figure 73 East end of Building 1



Figure 74 Building 2, from the south

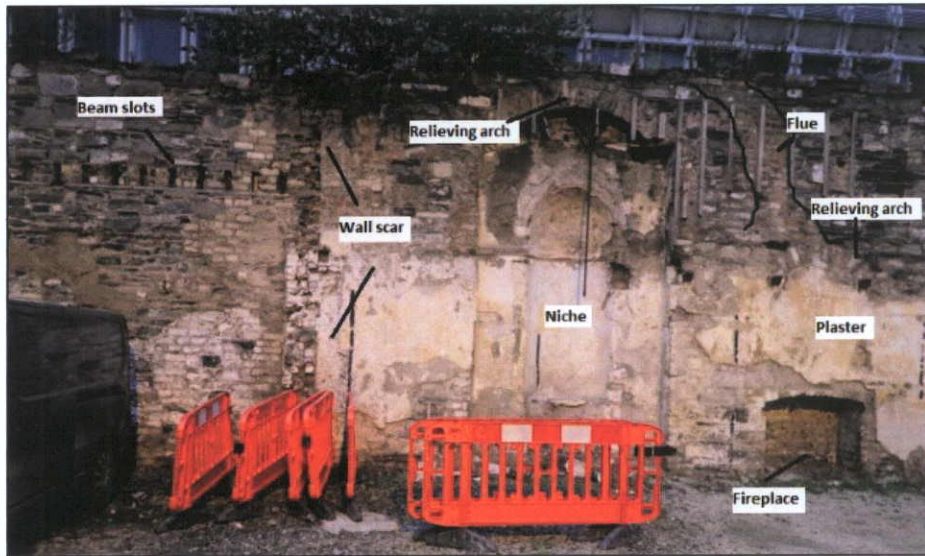


Figure 75 The west end of Room 2



Figure 76 Projecting chimney breast



Figure 77 The fireplace in Room 2: type 3 brick

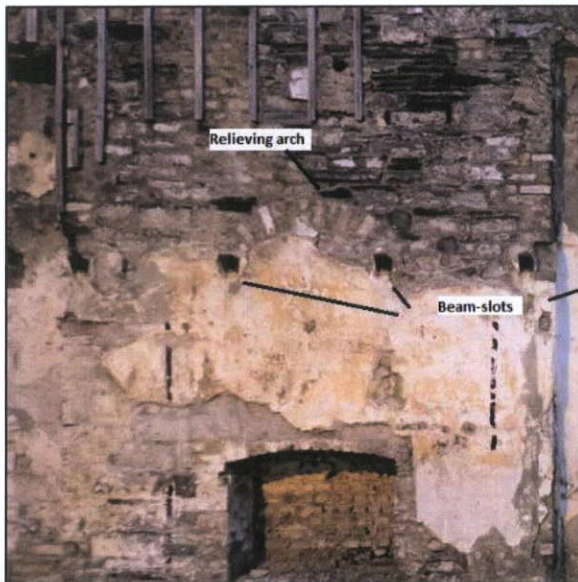


Figure 78 The relieving arch and beam-slots



Figure 79 The west niche

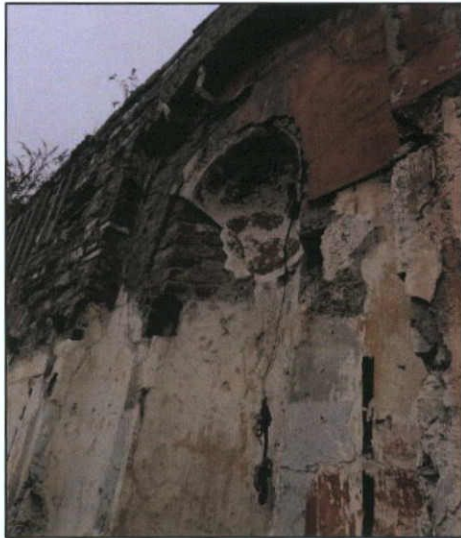


Figure 80 The east niche



Figure 81 Wall scar of Building 2

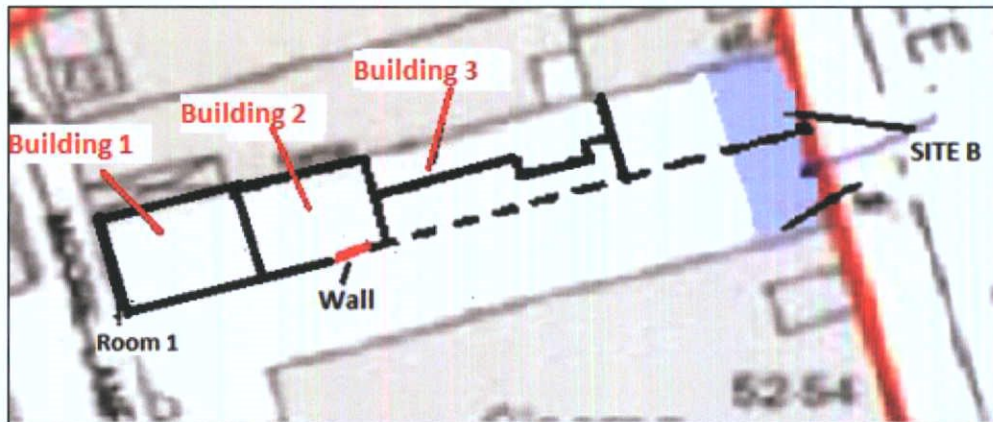


Figure 82 Building layout



Figure 83 Building 3, from the west

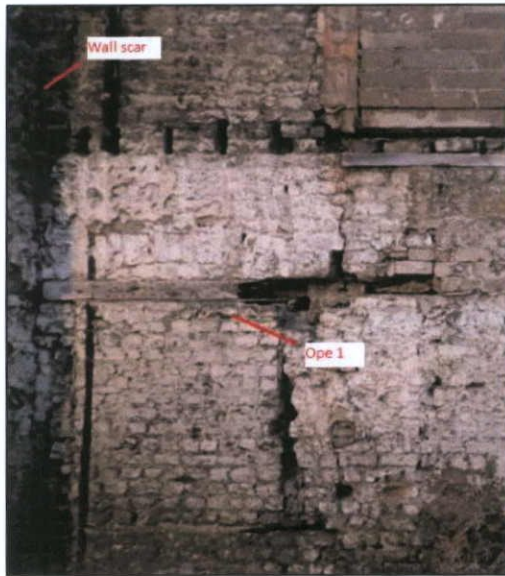


Figure 84 Ope 1 (note arch)



Figure 85 Ope 3



Figure 86 The opes 3 and 4

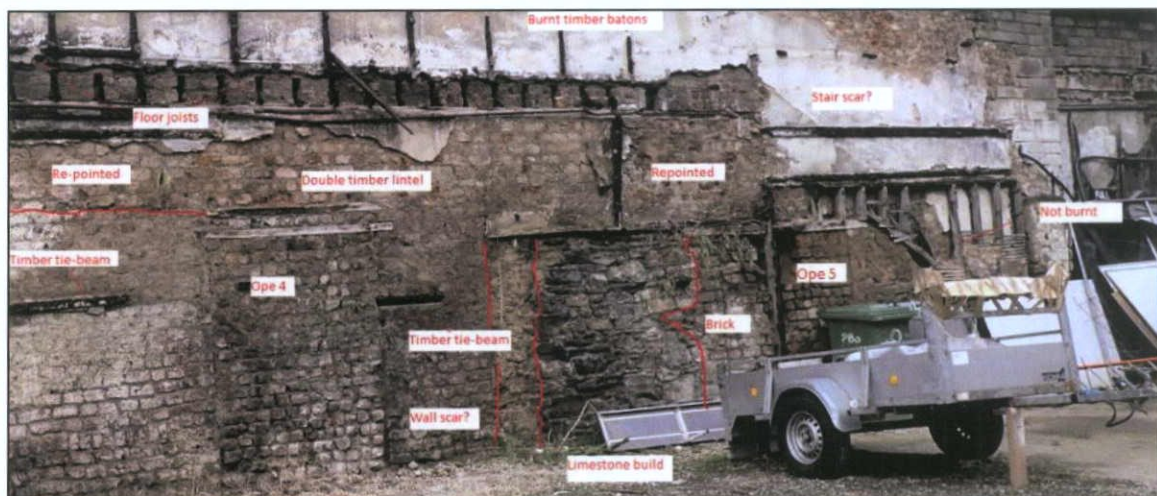


Figure 87 The eastern end of Building 3: note limestone

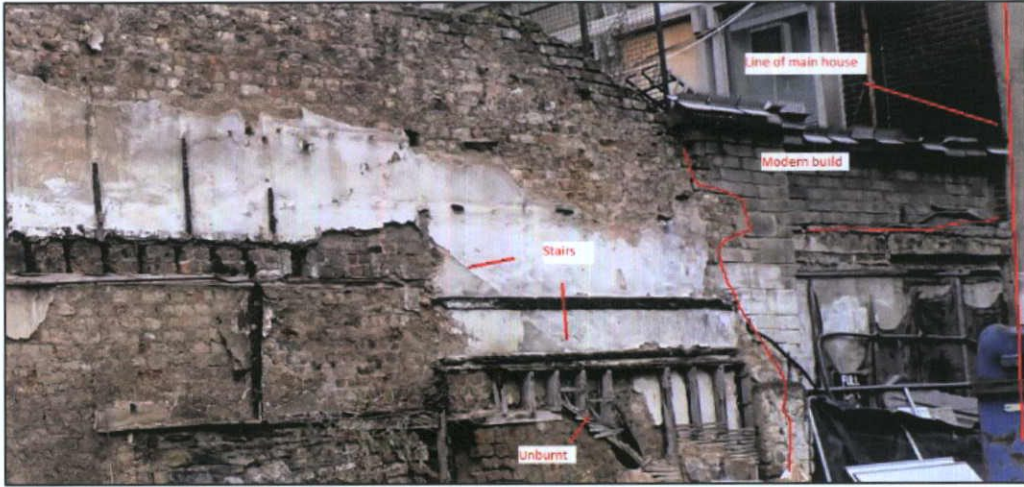


Figure 88 The stairs at the eastern end

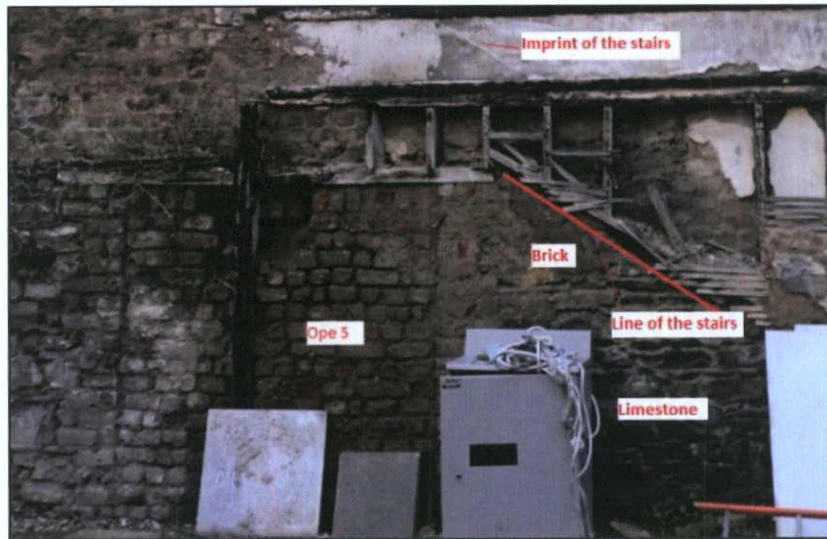


Figure 89 Ope 5 beneath the stairs

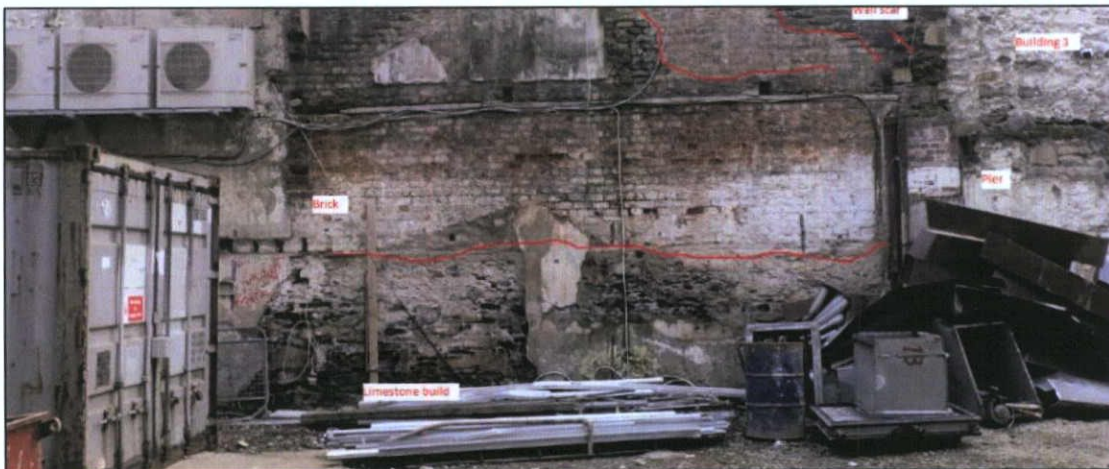


Figure 90 Boundary wall between No. 51 and 52 (from the north)

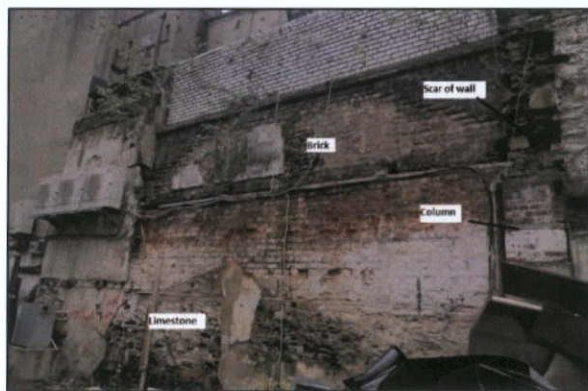


Figure 91 The boundary wall, at the eastern end

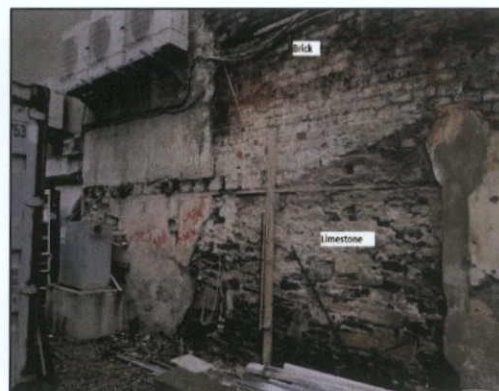


Figure 92 Section of the boundary wall

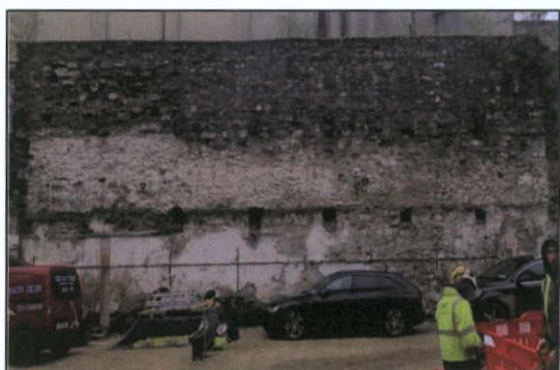


Figure 93 Building 4, from the north

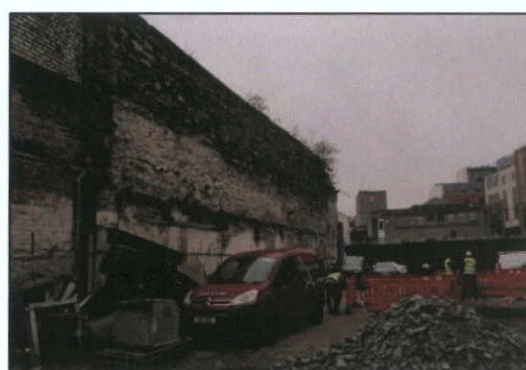


Figure 94 Building 4 from the east

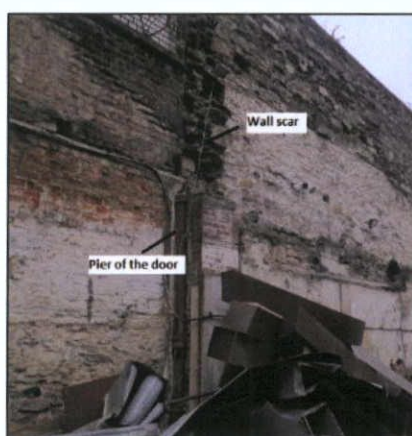


Figure 95 The door pier

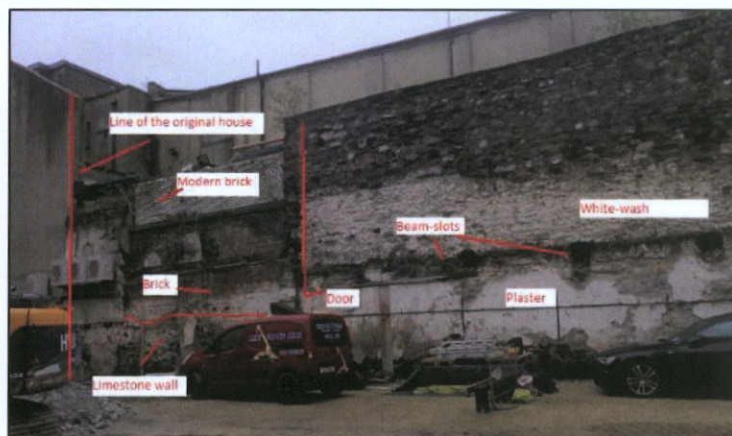


Figure 96 Building 4 from the south-east

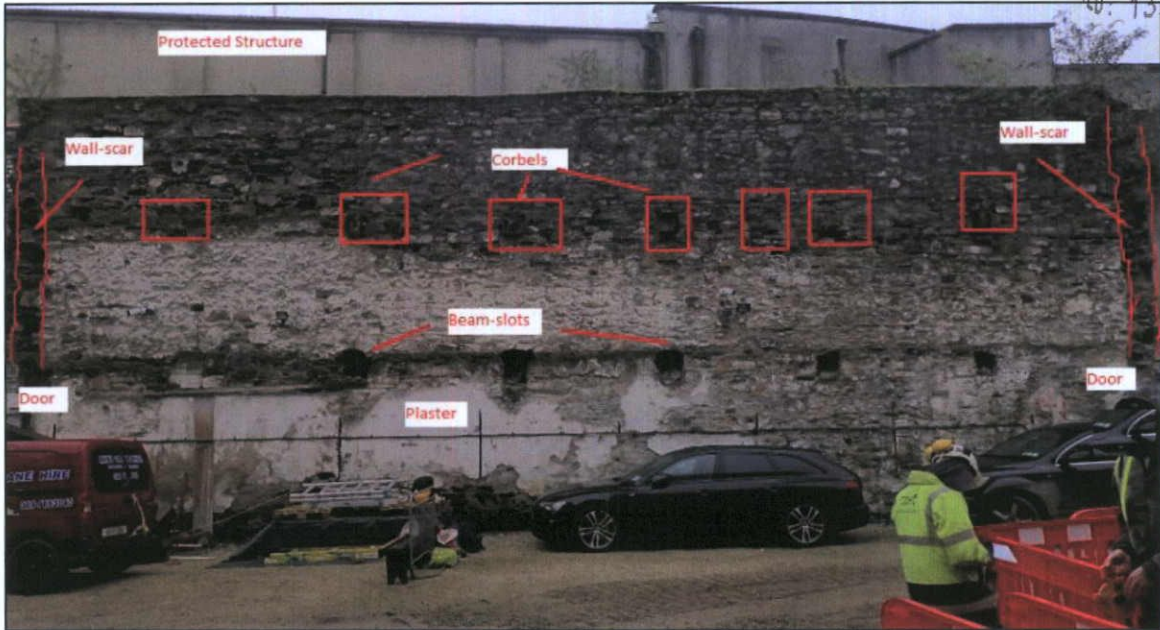


Figure 97 Building 4 from the north



Figure 98: Rocque's map, 1756, Ordnance Survey, 1836-47, Ordnance Survey, 1911



Figure 99 Location of Nos 58-66 Parnell Street

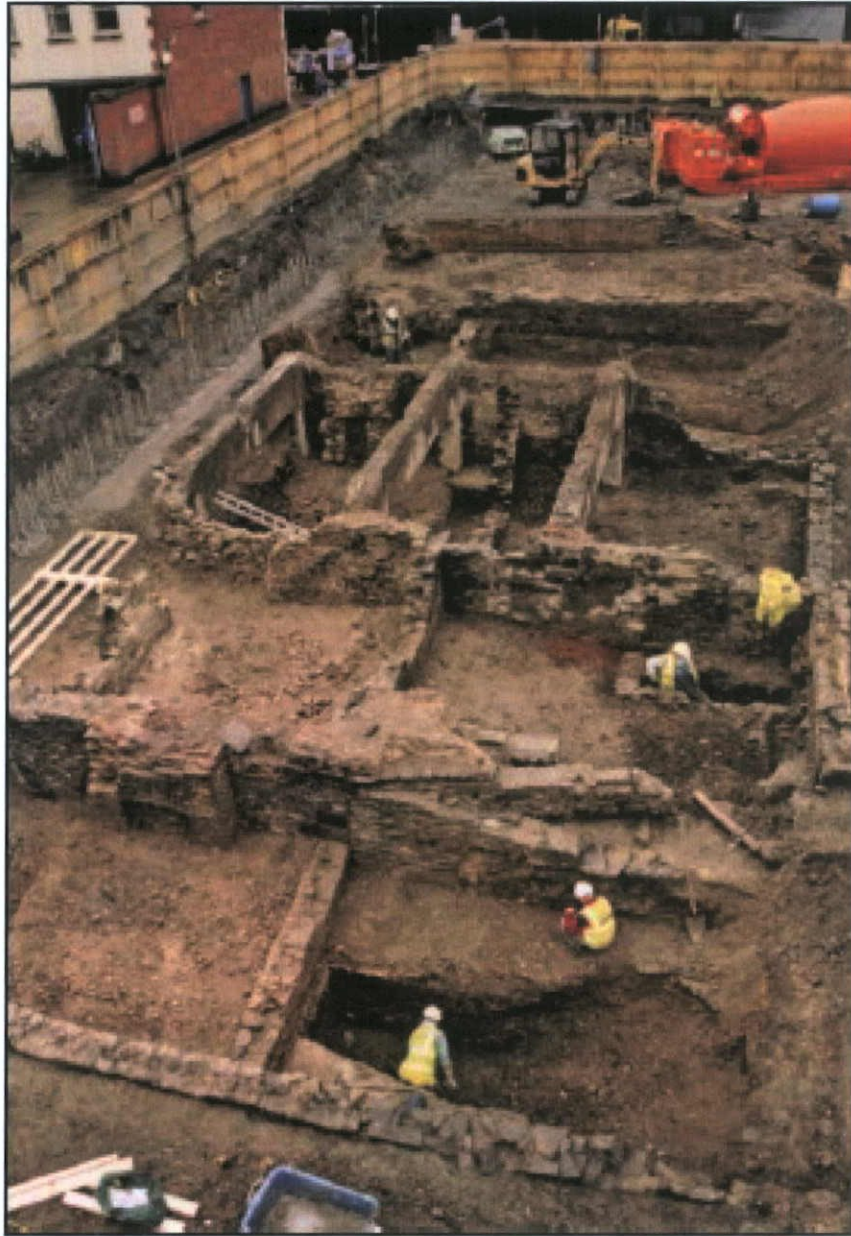


Figure 100 Nos 58-66 Parnell Street/Moore Lane, structural remains

DDC PLAN NO 5432/22
RECEIVED: 13/12/2022

Courtney Deery Heritage Consultancy

Lynwood House

Ballinteer Road

Dublin 16

D16 H9V6

Telephone: 01 5475795

Email: info@courtneydeery.ie

Website: www.courtneydeery.ie

Registered Company No. 519676

VAT No. IE1111365WH

C O U R T N E Y • D E E R Y
ARCHAEOLOGY & CULTURAL HERITAGE