

**Response to Further Information Request
DCC Reg. Ref. 5126/22 & 5432/22**

**Addendum Environmental Impact Assessment
Report**

**Volume 2: Appendices
Appendix 12.1 – Photomontages**

Mixed-Used Development at Dublin Central

ADD. INFO 28/07/23
PLAN NO 5126/22

Prepared By: -

SLA | Stephen Little
& Associates

26 / 27 Upper Pembroke Street, Dublin 2, D02 X361
Phone: + 353 (1) 676 6507 § Email: info@sla-pdc.com

In Association with: -

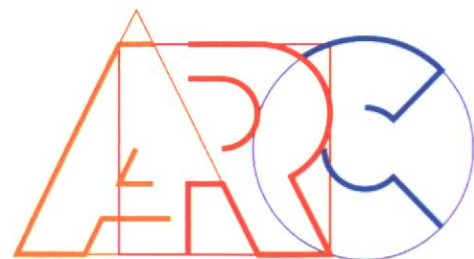
ACME Architects, RKD Architects, Grafton Architects, Waterman Moylan Consulting Engineers, Waterman Structures Ltd., GrossMax Landscape Architects, Scott Cawley Ltd., BDP M&E Consultants, AWN Consulting, Molly & Associates Conservation Architects, ARC Architectural Consultants, Courtney Deery Heritage Consultants

July 2023



DUBLIN CENTRAL – PROPOSED DEVELOPMENT ON SITE 2 AND No. 61 O’CONNELL STREET UPPER
PHOTOMONTAGES PREPARED IN RESPONSE TO A REQUEST FOR FURTHER INFORMATION OF DECEMBER 2022

JULY 2023

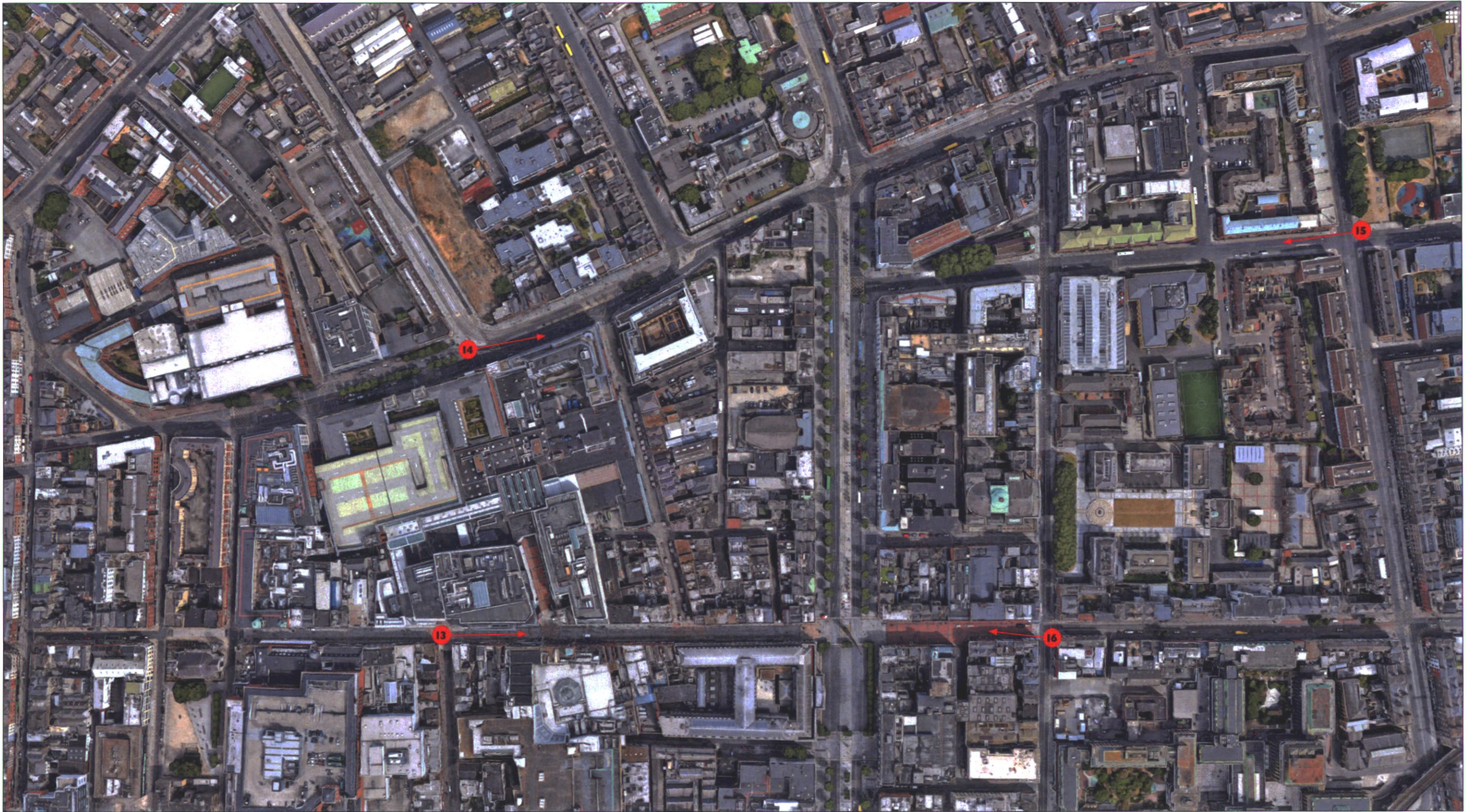


ARC Architectural
Consultants Limited

30 Dalkey Park, Dalkey
County Dublin

T 01 235 0525
F 01 284 8618
e info@arc.ie











DUBLIN CENTRAL • PHOTOMONTAGE VIEWS

View 1 • Parnell Square North West

AS NOW PROPOSED IN RESPONSE TO A REQUEST FOR FURTHER INFORMATION















DUBLIN CENTRAL • PHOTOMONTAGE VIEWS

AS NOW PROPOSED IN RESPONSE TO A REQUEST FOR FURTHER INFORMATION

View 3 • O'Connell Street at the Parnell Monument





DUBLIN CENTRAL • PHOTOMONTAGE VIEWS

View 4 • O'Connell Street at Cathal Brugha Street

AS EXISTING





DUBLIN CENTRAL • PHOTOMONTAGE VIEWS

View 4 • O'Connell Street at Cathal Brugha Street

AS SUBMITTED IN OCTOBER 2022





DUBLIN CENTRAL • PHOTOMONTAGE VIEWS

View 4 • O'Connell Street at Cathal Brugha Street

AS NOW PROPOSED IN RESPONSE TO A REQUEST FOR FURTHER INFORMATION













DUBLIN CENTRAL • PHOTOMONTAGE VIEWS

AS SUBMITTED IN OCTOBER 2022

View 5 • Cathal Brugha Street near O'Connell Street

