

LEGEND

Street furniture & Services

5.12 Over Head Wires (LUAS) - Pylon ESB	5.12 Bus Stop	5.12 Road Sign	5.12 Phone Box
5.12 Flowerbed	5.12 Bench Seat	5.12 Kiosk	5.12 Gas Cover
5.12 Pipe	5.12 Beacon	5.12 Gully	5.12 C-P Box
5.12 Lift	5.12 Coalhole Cover	5.12 Waste Bin	5.12 Fire Hydrant
5.12 Pump	5.12 Bore Hole	5.12 Hydrant	5.12 Fire Hydrant
5.12 Barrier	5.12 Electricity Pole	5.12 Hydrant	5.12 Fire Hydrant
5.12 Trial Pit	5.12 Telegraph pole	5.12 Hydrant	5.12 Fire Hydrant
5.12 Bus/Tram Shelter	5.12 OCS Pole	5.12 Hydrant	5.12 Fire Hydrant
5.12 Postbox	5.12 CCTV Camera Pole	5.12 Hydrant	5.12 Fire Hydrant
5.12 Water - General	5.12 Lamp Post	5.12 Hydrant	5.12 Fire Hydrant
5.12 Water Valve	5.12 Four Manhole	5.12 Hydrant	5.12 Fire Hydrant
5.12 Gas Valve	5.12 Surface Water MH	5.12 Hydrant	5.12 Fire Hydrant
5.12 Sluice Valve	5.12 Manholes	5.12 Hydrant	5.12 Fire Hydrant
5.12 Air Valve	5.12 Air Conditioning Vents	5.12 Hydrant	5.12 Fire Hydrant
5.12 Stop Cook	5.12 Services Inspection Cover	5.12 Hydrant	5.12 Fire Hydrant
5.12 C-P Post	5.12 Traffic Inspection Cover	5.12 Hydrant	5.12 Fire Hydrant
5.12 Marker Post	5.12 Cable TV Inspection Cover	5.12 Hydrant	5.12 Fire Hydrant
5.12 Traffic Light	5.12 ESAT Inspection Cover	5.12 Hydrant	5.12 Fire Hydrant
5.12 Parking Meter	5.12 ESAT Inspection Cover	5.12 Hydrant	5.12 Fire Hydrant
5.12 Plane Aerial Mark	5.12 ESAT Inspection Cover	5.12 Hydrant	5.12 Fire Hydrant
5.12 Smart Card Validator	5.12 ESAT Inspection Cover	5.12 Hydrant	5.12 Fire Hydrant
5.12 Unknown Valve	5.12 ESAT Inspection Cover	5.12 Hydrant	5.12 Fire Hydrant

Natural Features

5.12 Surface Change	5.12 Water Level	5.12 Golf
5.12 Land Drain	5.12 Invert level	5.12 Fair Way
5.12 Bottom of Slope	5.12 Bed Level	5.12 Green
5.12 Top of Slope	5.12 Spotheight	5.12 Tee Box
5.12 Ditch	5.12 Survey Station	5.12 Other
5.12 Water Edge / Lake / Pond	5.12 Photo point	5.12 Washout
5.12 Hedge / Trees Drip Line / Vegetation	5.12 Tree Deciduous	5.12 Top of Tree
5.12 Tree Coniferous	5.12 Tree Deciduous	5.12 Top of Tree

Built Features

Roads & Road Markings

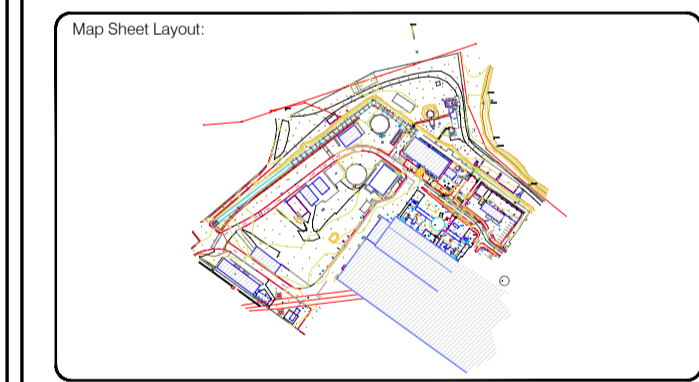
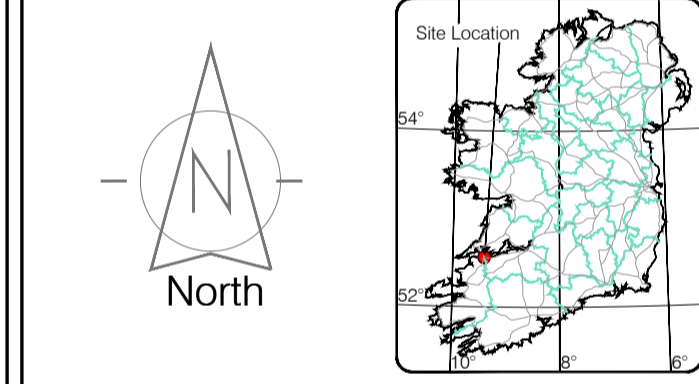
5.12 Building	5.12 Fence	5.12 Floor Level
5.12 Edge of Road	5.12 Gate	5.12 Apex Height
5.12 Kerb Bottom	5.12 Road Centreline	5.12 Eaves Height
5.12 Kerb Top	5.12 Top of Wall	5.12 Parapet Height
5.12 Bridge Abutment	5.12 Hoarding	5.12 Soft Elevation
5.12 Bridge Deck	5.12 Property Line	5.12 Step Level
5.12 Bridge Pier/Post	5.12 Road Floor	5.12 Concrete Pad
5.12 Building Facade	5.12 Top of Fence	5.12 Track
5.12 Footpath / Platform Train & Tram	5.12 Wall / Retaining Wall	5.12 Railway / Tram Rail / Grating / Ramp
5.12 Damp Pier / Course / Verge	5.12 Building Canopy / Roof / Overhang	5.12 Building Canopy / Roof / Overhang
5.12 Bridge Pier / Wall & Gate-Pillar / LUAS Trackbed	5.12 Building Canopy / Roof / Overhang	5.12 Building Canopy / Roof / Overhang
5.12 Cycleway / Private Landing Area	5.12 Building Canopy / Roof / Overhang	5.12 Building Canopy / Roof / Overhang

Murphy Surveys Ltd. Disclaimer

The user or recipient of this survey data understands and acknowledges this data may be inaccurate or contain errors or omissions and the user or recipient assumes full responsibility for any risks or damages resulting from: arising from, or in connection with any use of or reliance upon data displayed herein. Although significant care has been exercised to produce surveys that satisfy survey accuracy standards, these surveys are only as accurate as the source data from which they were compiled. Although all reasonable steps have been taken to locate all features visible at the time of the survey, there is no guarantee that all will be shown on the drawing, as some above ground features may have obstructed the survey. Wherever possible, areas unable to be surveyed will be labelled as 'UTS'.

The Company shall not be liable for any inaccuracy of the data provided beyond the specified scale or accuracy, or for any matters resulting from their use for purposes other than that stated in the Contract. No liability shall attach to the Surveyor in respect of any consequential loss or damages suffered by the Client.

The Client must promptly notify the Company of any errors in mapping of which it becomes aware. If misleading, inaccurate or otherwise inappropriate information is brought to the Company's attention or the Company itself identifies any such imprecision or error in a survey, it shall use its reasonable endeavours to fix or remove it and if necessary in certain instances, the Company being on notice of any such misleading, inaccurate or otherwise inappropriate information, it will re-conduct the survey and reproduce the data to within the specified scale or accuracy.



Drawn by: RM/DC	Date: 31.07.2023	Datum: Footing Lighthouse
Checked by: LC	Date: 08.08.2023	Grid System: Irish National Grid
Checked by: SD	Date: 11.08.2023	UTM Zone: 18M UTM

No.	Date	Description	Revisions
0	11.08.2023	First Drawing	
1	17.08.2023	Model moved to Footing Lighthouse Datum (as 2.7m below Mean Head Datum)	



Kildare Cork Dublin Belfast Glasgow Manchester London

Head Office
 Global House
 Kilcullen Business Campus
 Kilcullen Co. Kildare
 Ireland

Phone: (+353) 045 484040
 Fax: (+353) 045 484004
 Email: info@murphysurveys.ie

Client: AECOM Dublin

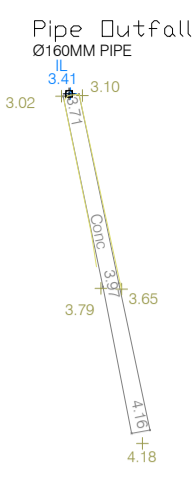
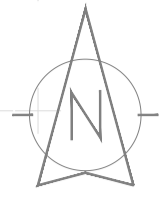
Project: Tarbert Power Station Topo survey

Date: 11.08.2023 **Scale:** NTS@A1

Description: Topographical Survey

Drawing Number: MGS54284_T_ITM_Rev1_00

© Copyright 2023 MURPHY GEOSPATIAL LTD



LEGEND
Street furniture & Services

5.12 Over Head Wires (LUAS) - Pylon ESB	5.12 Bus Stop	5.12 Road Sign	5.12 Phone Box
5.12 Flowerbed	5.12 Bollard	5.12 Bench Seat	5.12 Dust
5.12 Pipe	5.12 Beacon	5.12 Kiosk	5.12 Gas Cover
5.12 Light	5.12 Coalhole Cover	5.12 Gully	5.12 C-P Box
5.12 Barrier	5.12 Bore Hole	5.12 Waste Bin	5.12 US Car Park Vent
5.12 Pump	5.12 Electricity Pole	5.12 Hydrant	5.12 Fire Hydrant
5.12 Trial Pit	5.12 Telegraph pole	5.12 ESB Box	5.12 ESB Box
5.12 Bus/Tram Shelter	5.12 CCTV Camera Pole	5.12 ESB Inspection Cover	5.12 ESB Inspection Cover
5.12 Postbox	5.12 Lamp Post	5.12 Traffic Control Box	5.12 Traffic Control Box
5.12 Water General	5.12 Four Manhole	5.12 LUAS Technical Cubicle	5.12 LUAS Technical Cubicle
5.12 Gas Valve	5.12 Surface Water MH	5.12 Ticket Vending Machine	5.12 Ticket Vending Machine
5.12 Sluice Valve	5.12 Air Valve	5.12 Water Meter Cover	5.12 Water Meter Cover
5.12 Air Valve	5.12 Air Conditioning Vents	5.12 Telecom Inspection Cover	5.12 Telecom Inspection Cover
5.12 Stop Cook	5.12 Services Inspection Cover	5.12 Monument / Toilets	5.12 Monument / Toilets
5.12 C-P Post	5.12 Traffic Inspection Cover	5.12 Tank Storage	5.12 Tank Storage
5.12 Marker Post	5.12 Cable TV Inspection Cover	5.12 Basement MH Cover & Pipe	5.12 Basement MH Cover & Pipe
5.12 Traffic Light	5.12 ESAT Inspection Cover	5.12 Dashed Aerial Mark	5.12 Dashed Aerial Mark
5.12 Parking Meter	5.12 NTL Inspection Cover	5.12 Stay for pole	5.12 Stay for pole
5.12 Floor Aerial Mark	5.12 Eicom Inspection Cover	5.12 Pipe Protection	5.12 Pipe Protection
5.12 Smart Card Validator	5.12 Rodding Eye	5.12 Washout	5.12 Washout
5.12 Unknown Valve			

Natural Features

5.12 Surface Change	5.12 Water Level	5.12 Golf
5.12 Land Drain	5.12 Invert Level	5.12 Fair Way
5.12 Bottom of Slope	5.12 Bed Level	5.12 Green
5.12 Top of Slope	5.12 Spotheight	5.12 Tee Box
5.12 Ditch		5.12 Other
5.12 Water Edge / Lake / Pond		5.12 Survey Station
5.12 Hedge / Trees Drip Line / Vegetation		5.12 Photo point
5.12 Tree Coniferous		5.12 Top of Tree

Built Features
Roads & Road Markings

5.12 Building	5.12 Fence	5.12 Floor Level
5.12 Edge of Road	5.12 Gate	5.12 Apex Height
5.12 Kerb Bottom	5.12 Road Centreline	5.12 Eaves Height
5.12 Kerb Top	5.12 Top of Wall	5.12 Parapet Height
5.12 Bridge Abutment	5.12 Hoarding	5.12 Soft Elevation
5.12 Bridge Deck	5.12 Property Line	5.12 Step Level
5.12 Bridge Pier/Post	5.12 Road Side	5.12 Concrete Pad
5.12 Building Facade	5.12 Top of Fence	5.12 Track
5.12 Footpath / Platform Train & Tram	5.12 Wall / Retaining Wall	
5.12 Damp Proof Course / Verge	5.12 Railway / Tram Rail / Grating / Ramp	
5.12 Bridge Pier / Wall & Gate-Pillar / LUAS Trackbed	5.12 Building Canopy / Roof / Overhang	
5.12 Cycleway / Private Landing Area		



Murphy Surveys Ltd. Disclaimer

The user or recipient of this survey data understands and acknowledges this data may be inaccurate or contain errors or omissions and the user or recipient assumes full responsibility for any risks or damages resulting from: arising from, or in connection with any use of or reliance upon data displayed herein. Although significant care has been exercised to produce surveys that satisfy survey accuracy standards, these surveys are only as accurate as the source data from which they were compiled. Although all reasonable steps have been taken to locate all features visible at the time of the survey, there is no guarantee that all will be shown on the drawing, as some above ground features may have obstructed the survey. Wherever possible, areas unable to be surveyed will be labelled as "UTS".

The Company shall not be liable for any inaccuracy of the data provided beyond the specified scale or accuracy, or for any matters resulting from their use for purposes other than that stated in the Contract. No liability shall attach to the Surveyor in respect of any consequential loss or damages suffered by the Client.

The Client must promptly notify the Company of any errors in mapping of which it becomes aware. If misleading, inaccurate or otherwise inappropriate information is brought to the Company's attention or the Company itself identifies any such inaccuracy or error in a survey, it shall use its reasonable endeavours to fix or remove it and if necessary in certain instances, the Company being on notice of any such misleading, inaccurate or otherwise inappropriate information, it will re-conduct the survey and reproduce the data to within the specified scale or accuracy.

Map Sheet Layout

Site Location

North

Drawn by: RM/DC	Date: 31.07.2023	Datum: Footing Lighthouse Grid System
Checked by: SD	Date: 11.08.2023	Irish National Grid (ITM)

No.	Date	Description	Revisions
0	11.08.2023	First Drawing	
1	17.08.2023	Model revised to Footing Lighthouse Datum (as 2.7m below Mean Head Datum)	

SOCIETY OF CHARTERED SURVEYORS IRELAND

EUROPEAN GPR ASSOCIATION

RICS

THE SURVEY ASSOCIATION FULL MEMBER

Murphy GEOSPATIAL

Topographic surveys, Measured Building Surveys, Setting Out, As-Built Surveys, Hydrographic Surveys, Legal Mapping, Pipeline Surveys, Services Location, Ground Penetrating Radar, Drone Surveys, Aerial Photography, Aerial Photogrammetry

Kildare Cork Dublin Belfast Glasgow Manchester London

Head Office
Global House
Kilcullen Business Campus
Kilcullen Co. Kildare
Ireland

Phone: (+353) 045 484040
Fax: (+353) 045 484004
Email: info@murphysurveys.ie

Client: AECOM Dublin

Project: Tarbert Power Station Topo survey

Date: 11.08.2023 **Scale:** 1:250@A1

Description: Topographical Survey

Drawing Number: MGS54284_T_ITM_Rev1_01

HAZARDOUS WASTE PLANT A
Copyright 2023 MURPHY GEOSPATIAL LTD

This drawing contains previous MGS46463_T_ITM_3d_Rev1