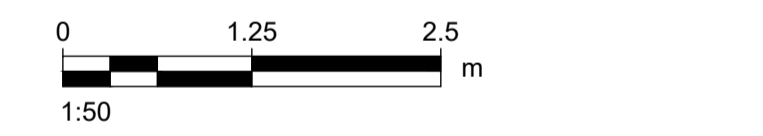


- NOTES**
1. PROPOSED ELEVATIONS ARE RELATIVE TO ORDNANCE DATUM POOLBEG
  2. REFER TO PROPOSED SITE ELEVATIONS FOR CONTIGUOUS DETAIL
  3. INTERNAL BUILDING LAYOUT IS SUBJECT TO CHANGE AT DETAILED DESIGN PHASE
  4. TO BE PRINTED AT A1



**DRAWN BY**  
CONOR COONEY

**ISSUE/REVISION**

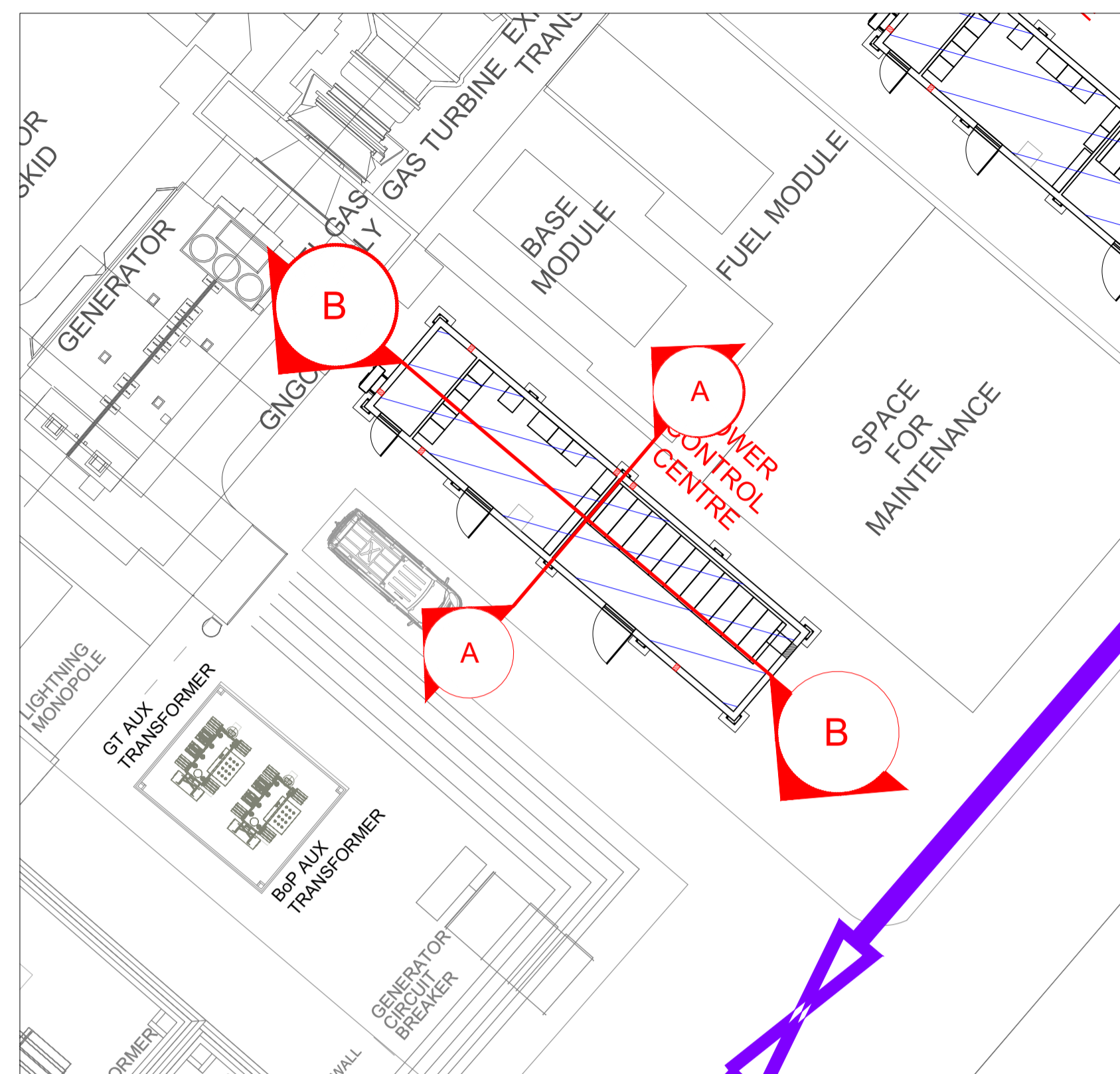
I/R	DATE	DESCRIPTION
B	22/11/2023	FOR PLANNING
A	03/10/2023	FOR COMMENT

**PROJECT NUMBER**  
60695232

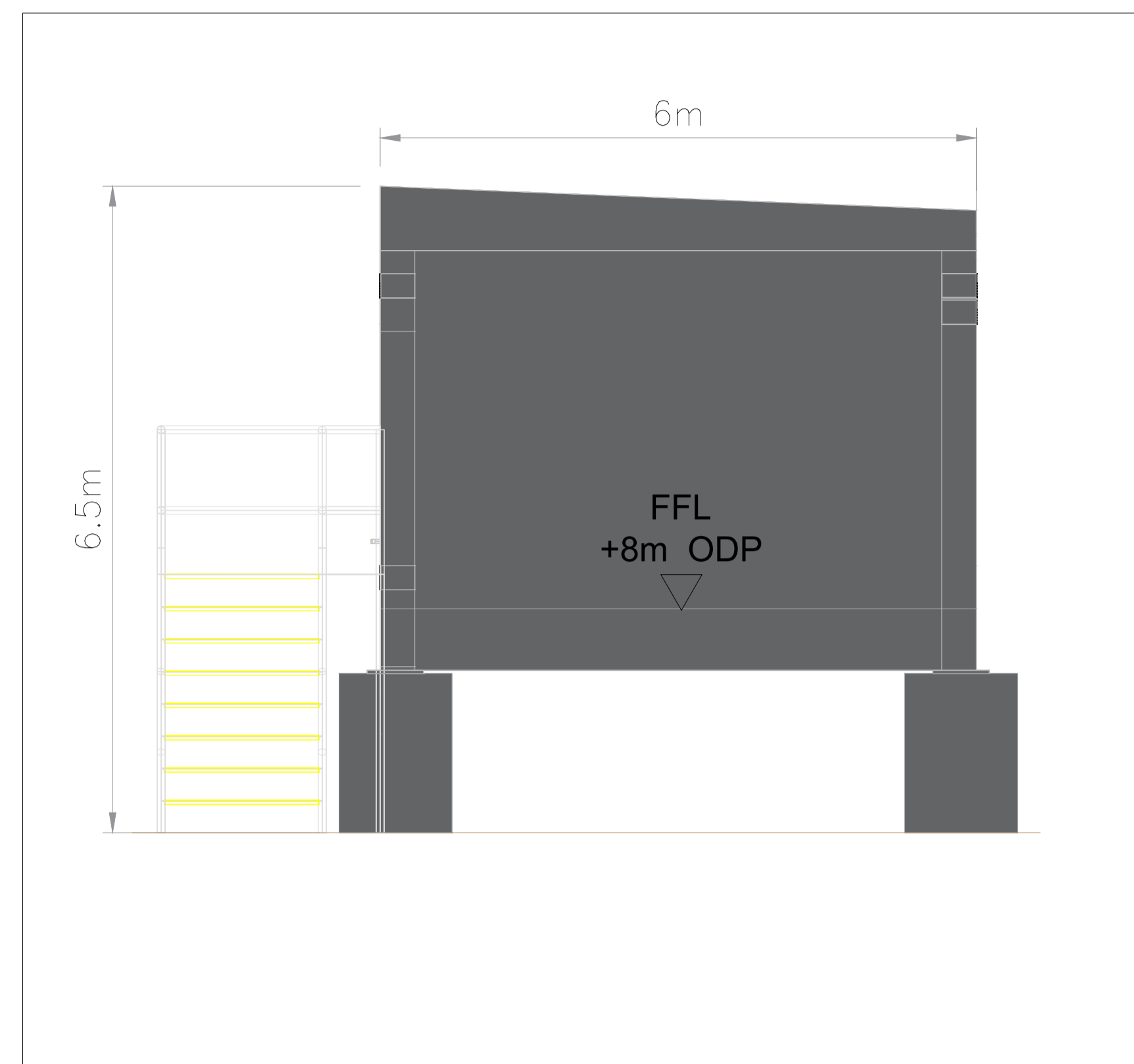
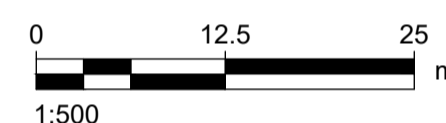
**SHEET TITLE**  
POWER CONTROL CENTRE &  
POWER CONTROL MODULE  
PLAN & ELEVATIONS - SHEET 1 OF 2

**SHEET NUMBER**  
60695232-TBT-DR-012

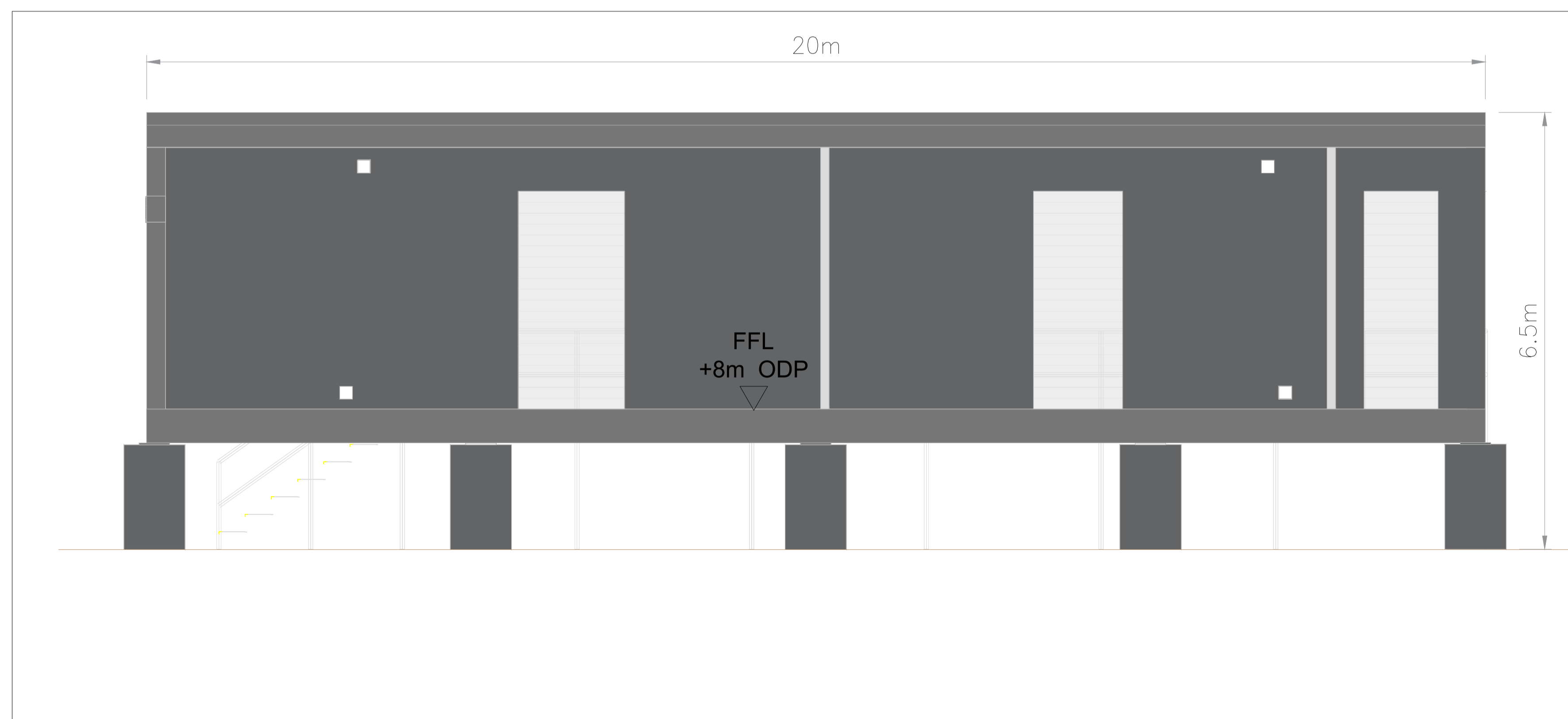
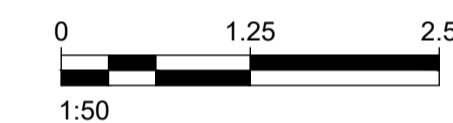
This drawing has been prepared for the use of AECOM's client. It may not be used, modified, reproduced or relied upon by third parties, except as agreed by AECOM or as required by law. AECOM accepts no responsibility, and denies any liability, whatsoever, to any party that uses or relies on this drawing without AECOM's express written consent. Do not scale this document. All measurements must be obtained from the stated dimensions.



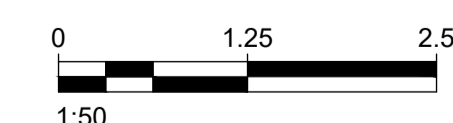
**KEY PLAN**  
1:500



**A-A South East Section**  
1:50



**B-B North East Section**  
1:50



**NOTES**

1. PROPOSED ELEVATIONS ARE RELATIVE TO ORDNANCE DATUM POOLBEG
2. TO BE PRINTED AT A1

**DRAWN BY**

CONOR COONEY

**ISSUE/REVISION**

I/R	DATE	DESCRIPTION
B	22/11/2023	FOR PLANNING
A	03/10/2023	FOR COMMENT

**PROJECT NUMBER**

60695232

**SHEET TITLE**

POWER CONTROL CENTRE &  
POWER CONTROL MODULE  
SECTIONS - SHEET 2 OF 2

**SHEET NUMBER**

60695232-TBT-DR-012

This drawing has been prepared for the use of AECOM's client. It may not be used, modified, reproduced or relied upon by third parties, except as agreed by AECOM or as required by law. AECOM accepts no responsibility, and denies any liability whatsoever, to any party that uses or relies on this drawing without AECOM's express written consent. Do not scale this document. All measurements must be obtained from the stated dimensions.