

IMPORTANT USER NOTE:
 THE VIEWER OF THIS MAP SHOULD REFER TO THE DISCLAIMER, GUIDANCE NOTES AND CONDITIONS OF USE THAT ACCOMPANY THIS MAP.

Legend

- 10% Fluvial AEP Event
- 1% Fluvial AEP Event
- 0.1% Fluvial AEP Event
- Modelled River Centreline
- AFA Extents
- Embankment
- Wall
- Defended Area
- 1% AEP Standard of Protection of Flood Defence (Walls / Embankments)
- 0.1% AEP
- Node Point
- Node ID Node Label

FINAL

REV:	NOTE:	DATE:
------	-------	-------



The Office of Public Works
 Jonathan Swift Street
 Trim
 Co Meath

Elmwood House
 74 Boucher Road
 Belfast
 BT12 6RZ

T +44(0) 28 90 667914
 F +44(0) 28 90 668286
 W www.rpsgroup.com
 E ireland@rpsgroup.com

Map:
 Ashford/ Rathnew Fluvial Flood Extents

Map Type: EXTENT

Source: FLUVIAL

Map Area: HPW

Scenario: CURRENT

Drawn By: C.C. **Date:** 15 November 2017

Checked By: D.I. **Date:** 15 November 2017

Approved By: S.P. **Date:** 15 November 2017

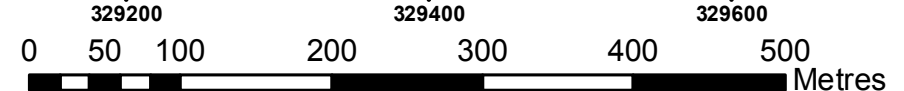
Drawing No.:
 E10WIC_EXFCD_F2_05

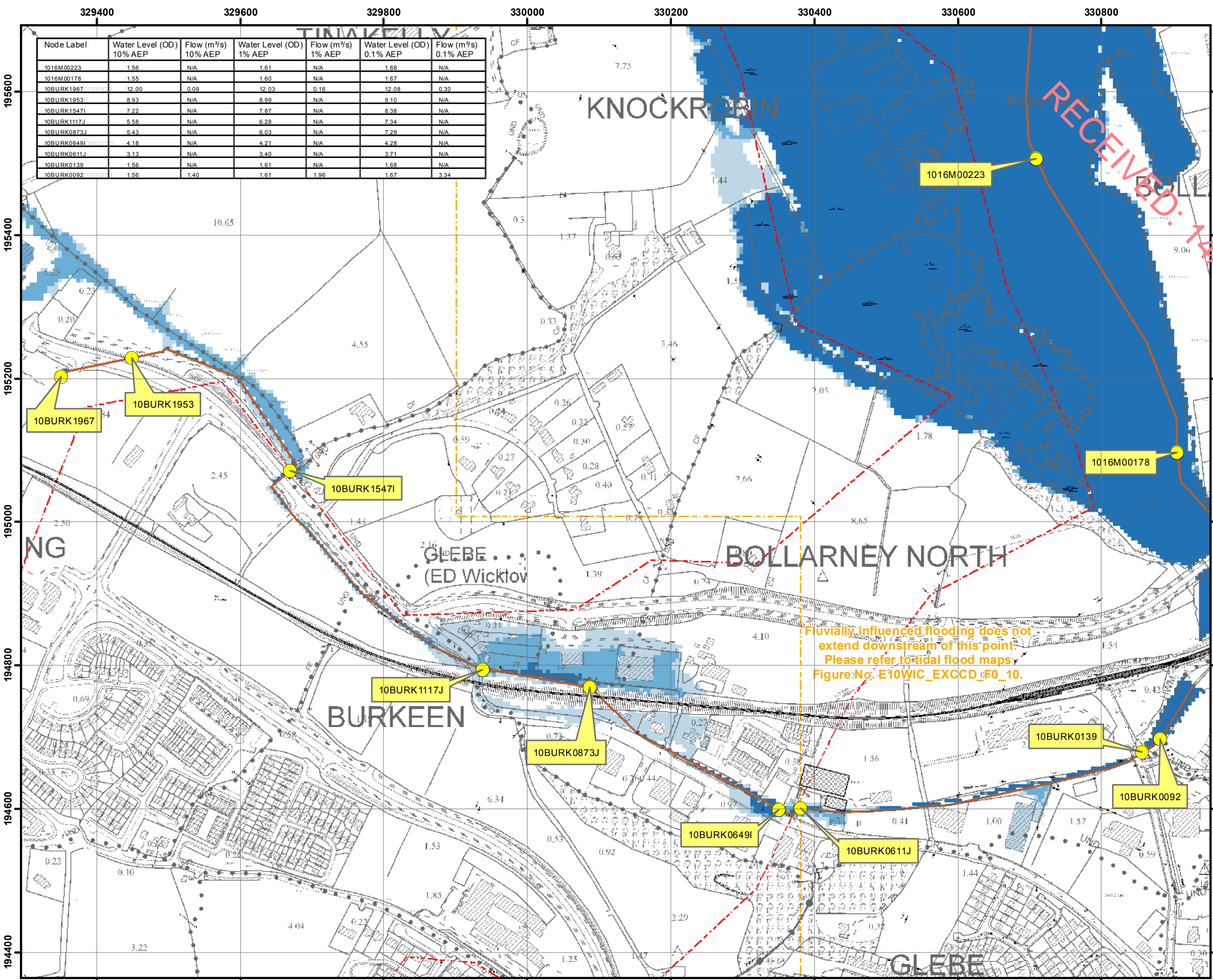
Map Series: Page 5 of 15

Drawing Scale: 1:5,000 @A3

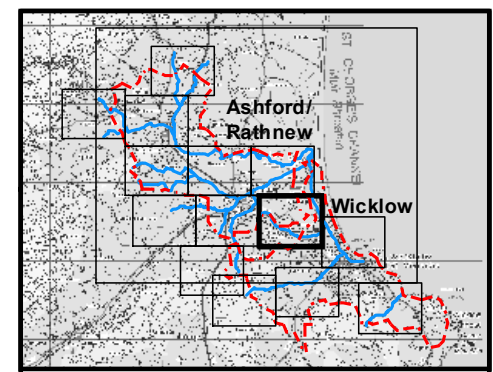
Fluvially influenced flooding does not extend downstream of this point. Please refer to tidal flood maps, Figure No. E10WIC_EXCCD_F0_05.

Node Label	Water Level (OD) 10% AEP	Flow (m³/s) 10% AEP	Water Level (OD) 1% AEP	Flow (m³/s) 1% AEP	Water Level (OD) 0.1% AEP	Flow (m³/s) 0.1% AEP
1016M00537	3.75	N/A	4.08	N/A	4.16	N/A
1016M00507	3.00	N/A	3.21	N/A	3.24	N/A
1016M00440	1.69	25.41	1.71	31.45	1.75	48.38
1016M00390	1.56	N/A	1.62	N/A	1.69	N/A
1016M00367	1.56	N/A	1.62	N/A	1.69	N/A
1016M00323	1.56	57.27	1.61	69.33	1.69	91.98
1016M00273	1.56	N/A	1.61	N/A	1.69	N/A
1019m00162	5.98	10.45	6.14	18.11	6.25	28.41
1019m00137	4.84	10.64	4.89	18.45	4.94	30.34
1019m00109	3.49	N/A	3.54	N/A	3.58	N/A
1019m00056	1.76	N/A	1.79	N/A	1.82	N/A
1019m00014E	1.57	7.17	1.62	29.41	1.69	42.21
1019m00005	1.56	N/A	1.61	N/A	1.69	N/A
1019A00005	6.19	1.92	6.38	2.51	6.56	3.89
1016Ma00352	1.56	N/A	1.62	N/A	1.69	N/A
1016M00328b	1.56	N/A	1.61	N/A	1.69	N/A





Node Label	Water Level (OD) 10% AEP	Flow (m ³ /s) 10% AEP	Water Level (OD) 1% AEP	Flow (m ³ /s) 1% AEP	Water Level (OD) 0.1% AEP	Flow (m ³ /s) 0.1% AEP
1016M00223	1.56	N/A	1.61	N/A	1.68	N/A
1016M00178	1.55	N/A	1.60	N/A	1.67	N/A
10BURK1967	12.00	0.09	12.03	0.16	12.08	0.30
10BURK1953	8.93	N/A	8.99	N/A	9.10	N/A
10BURK1547I	7.22	N/A	7.87	N/A	8.38	N/A
10BURK1117J	5.58	N/A	6.28	N/A	7.34	N/A
10BURK0873J	5.43	N/A	6.03	N/A	7.29	N/A
10BURK0649I	4.18	N/A	4.21	N/A	4.28	N/A
10BURK0611J	3.13	N/A	3.40	N/A	3.71	N/A
10BURK0139	1.56	N/A	1.61	N/A	1.68	N/A
10BURK0092	1.56	1.40	1.61	1.96	1.67	3.34



IMPORTANT USER NOTE:
THE VIEWER OF THIS MAP SHOULD REFER TO THE DISCLAIMER, GUIDANCE NOTES AND CONDITIONS OF USE THAT ACCOMPANY THIS MAP.

- Legend**
- 10% Fluvial AEP Event
 - 1% Fluvial AEP Event
 - 0.1% Fluvial AEP Event
 - Modelled River Centreline
 - AFA Extents
 - Embankment
 - Wall
 - Defended Area
 - 1% AEP Standard of Protection of Flood Defence (Walls / Embankments)
 - 0.1% AEP Standard of Protection of Flood Defence (Walls / Embankments)
 - Node Point
 - Node ID Node Label

FINAL

REV:	NOTE:	DATE:
------	-------	-------

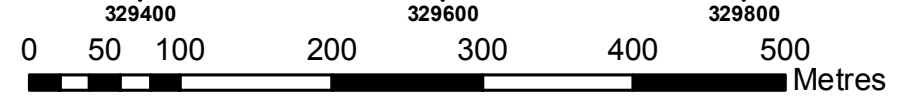


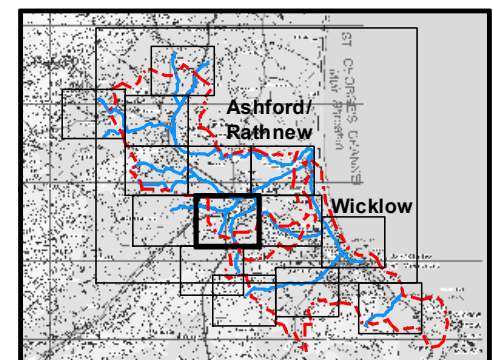
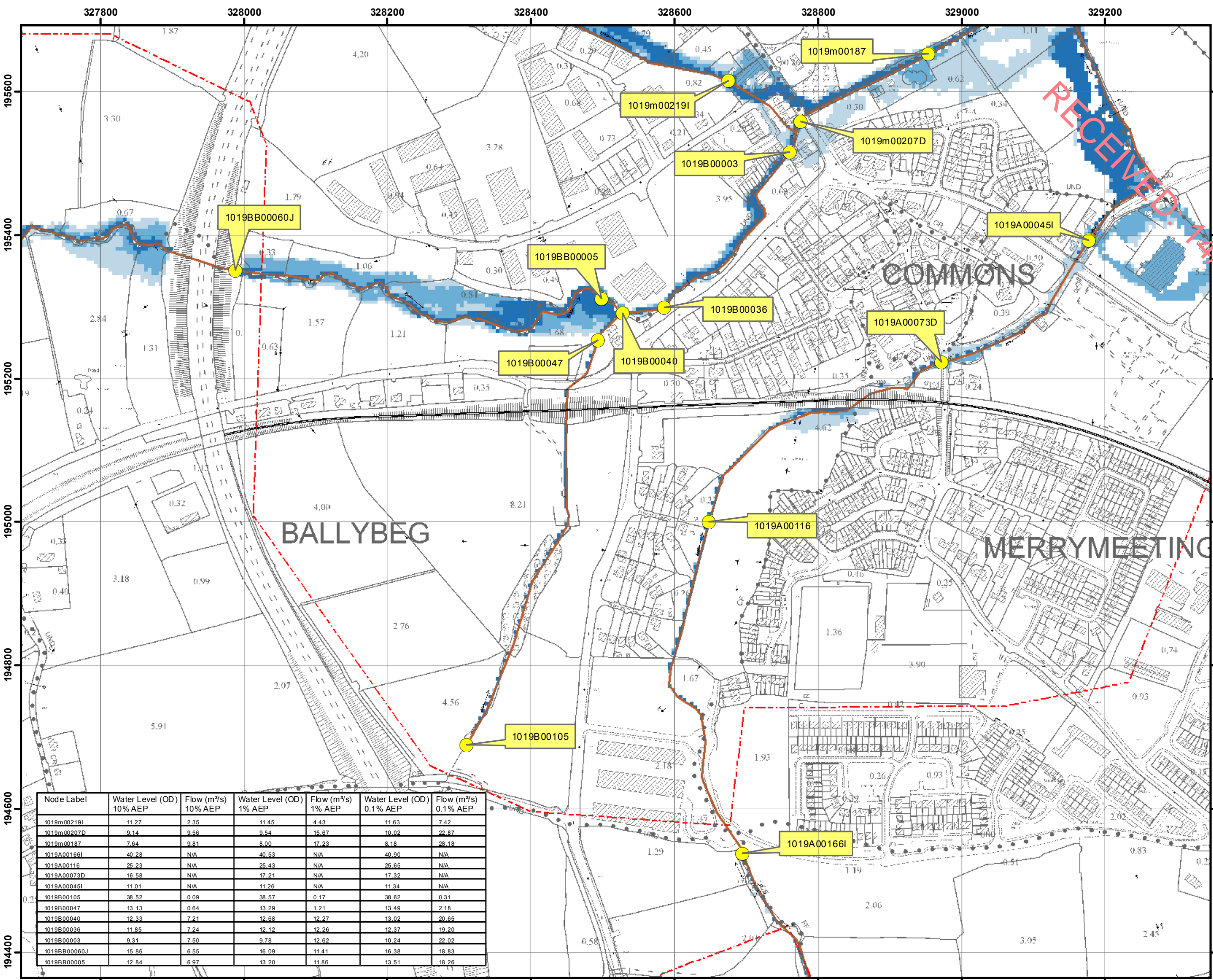
The Office of Public Works
Jonathan Swift Street
Trim
Co Meath

Elmwood House
74 Boucher Road
Belfast
BT12 6RZ

T +44(0) 28 90 667914
F +44(0) 28 90 668286
W www.rpsgroup.com
E ireland@rpsgroup.com

Map:	
Wicklow/Ashford/ Rathnew Fluvial Flood Extents	
Map Type: EXTENT	
Source: FLUVIAL	
Map Area: HPW	
Scenario: CURRENT	
Drawn By: C.C.	Date: 15 November 2017
Checked By: D.I.	Date: 15 November 2017
Approved By: S.P.	Date: 15 November 2017
Drawing No.: E10WIC_EXFCD_F2_10	
Map Series: Page 10 of 15	
Drawing Scale: 1:5,000 @A3	





IMPORTANT USER NOTE:
 THE VIEWER OF THIS MAP SHOULD REFER TO THE DISCLAIMER, GUIDANCE NOTES AND CONDITIONS OF USE THAT ACCOMPANY THIS MAP.

- Legend**
- 10% Fluvial AEP Event
 - 1% Fluvial AEP Event
 - 0.1% Fluvial AEP Event
 - Modelled River Centreline
 - AFA Extents
 - Embankment
 - Wall
 - Defended Area
 - 1% AEP Standard of Protection of Flood Defence (Walls / Embankments)
 - 1% AEP Standard of Protection of Flood Defence (Walls / Embankments)
 - Node Point
 - Node ID Node Label

FINAL

REV:	NOTE:	DATE:
------	-------	-------

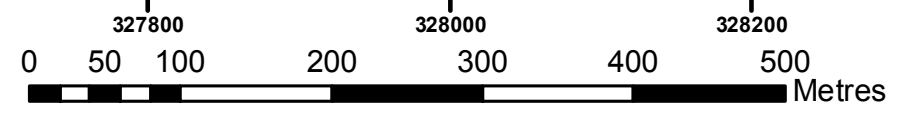


The Office of Public Works
 Jonathan Swift Street
 Trim
 Co Meath

Elmwood House
 74 Boucher Road
 Belfast
 BT12 6RZ

T +44(0) 28 90 667914
 F +44(0) 28 90 668286
 W www.rpsgroup.com
 E ireland@rpsgroup.com

Node Label	Water Level (OD) 10% AEP	Flow (m ³ /s) 10% AEP	Water Level (OD) 1% AEP	Flow (m ³ /s) 1% AEP	Water Level (OD) 0.1% AEP	Flow (m ³ /s) 0.1% AEP
1019m00219I	11.27	2.35	11.45	4.43	11.63	7.42
1019m00207D	9.14	9.56	9.54	15.67	10.02	22.87
1019m00187	7.64	9.81	8.00	17.23	8.18	28.18
1019A00166I	40.28	N/A	40.53	N/A	40.90	N/A
1019A00116	25.23	N/A	25.43	N/A	25.65	N/A
1019A00073D	16.58	N/A	17.21	N/A	17.32	N/A
1019A00045I	11.01	N/A	11.26	N/A	11.34	N/A
1019B00105	38.52	0.09	38.57	0.17	38.62	0.31
1019B00047	13.13	0.64	13.29	1.21	13.49	2.18
1019B00040	12.33	7.21	12.68	12.27	13.02	20.65
1019B00036	11.85	7.24	12.12	12.26	12.37	19.20
1019B00003	9.31	7.50	9.78	12.62	10.24	22.02
1019BB00060J	15.86	6.55	16.09	11.41	16.38	18.83
1019BB00005	12.84	6.97	13.20	11.86	13.51	18.26



Map:
 Ashford/ Rathnew Fluvial Flood Extents

Map Type: EXTENT

Source: FLUVIAL

Map Area: HPW

Scenario: CURRENT

Drawn By: C.C. **Date:** 15 November 2017

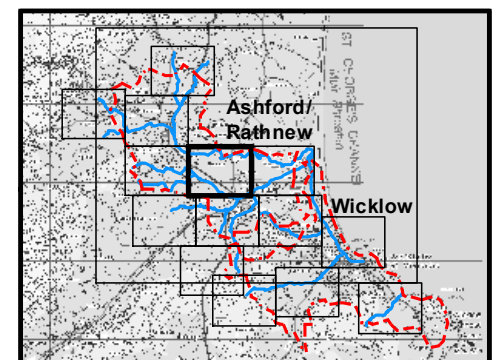
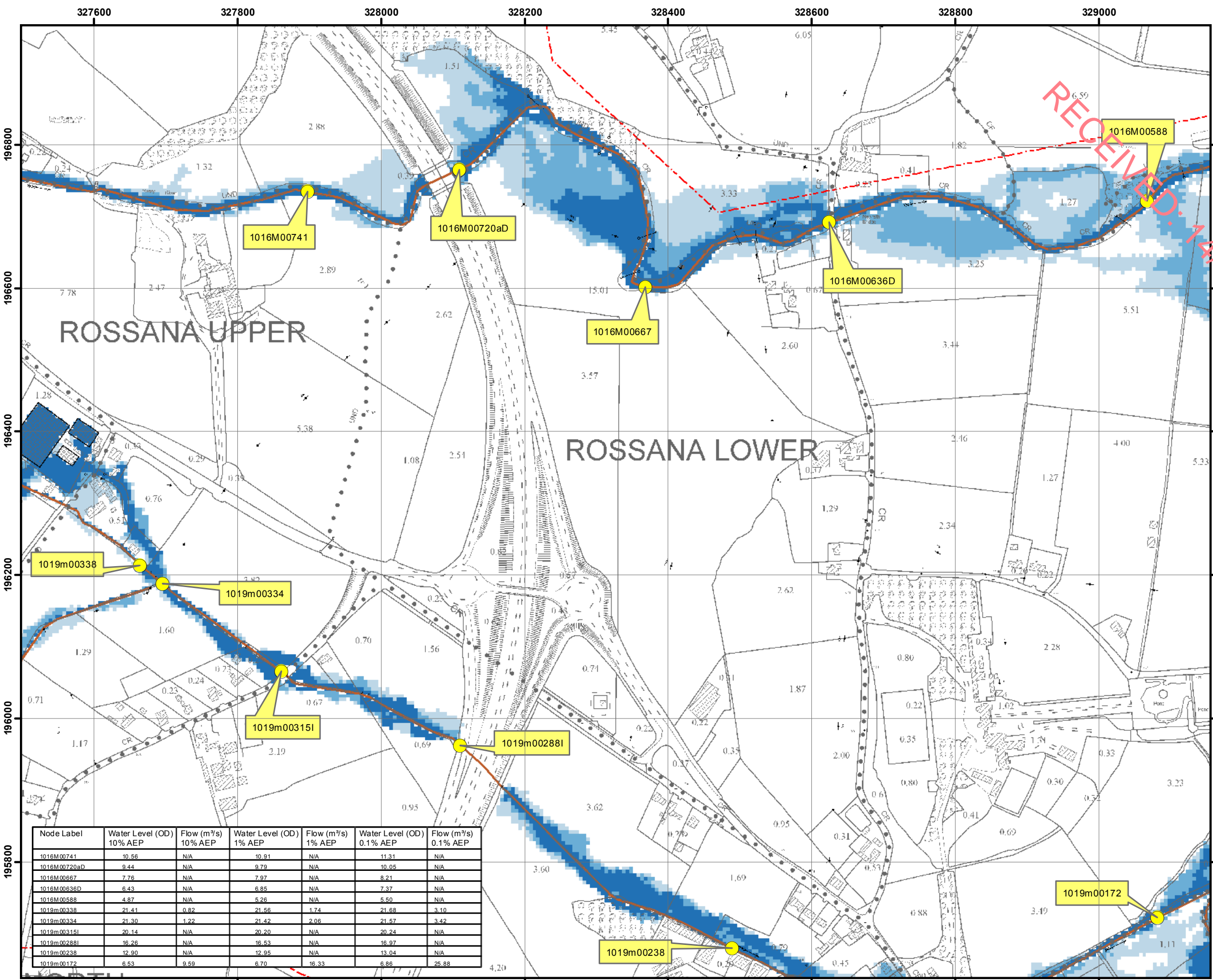
Checked By: D.I. **Date:** 15 November 2017

Approved By: S.P. **Date:** 15 November 2017

Drawing No.:
 E10WIC_EXFCD_F2_07

Map Series: Page 7 of 15

Drawing Scale: 1:5,000 @A3



IMPORTANT USER NOTE:
 THE VIEWER OF THIS MAP SHOULD REFER TO THE DISCLAIMER, GUIDANCE NOTES AND CONDITIONS OF USE THAT ACCOMPANY THIS MAP.

- Legend**
- 10% Fluvial AEP Event
 - 1% Fluvial AEP Event
 - 0.1% Fluvial AEP Event
 - Modelled River Centreline
 - AFA Extents
 - Embankment
 - Wall
 - Defended Area
 - 1% AEP Standard of Protection of Flood Defence (Walls / Embankments)
 - 1% AEP Standard of Protection of Flood Defence (Walls / Embankments)
 - Node Point
 - Node ID Node Label

FINAL

REV:	NOTE:	DATE:
------	-------	-------



The Office of Public Works
 Jonathan Swift Street
 Trim
 Co Meath

Elmwood House
 74 Boucher Road
 Belfast
 BT12 6RZ

T +44(0) 28 90 667914
 F +44(0) 28 90 668286
 W www.rpsgroup.com
 E ireland@rpsgroup.com

Node Label	Water Level (OD) 10% AEP	Flow (m ³ /s) 10% AEP	Water Level (OD) 1% AEP	Flow (m ³ /s) 1% AEP	Water Level (OD) 0.1% AEP	Flow (m ³ /s) 0.1% AEP
1016M00741	10.56	N/A	10.91	N/A	11.31	N/A
1016M00720aD	9.44	N/A	9.79	N/A	10.05	N/A
1016M00667	7.76	N/A	7.97	N/A	8.21	N/A
1016M00636D	6.43	N/A	6.85	N/A	7.37	N/A
1016M00588	4.87	N/A	5.26	N/A	5.50	N/A
1019m00338	21.41	0.82	21.58	1.74	21.68	3.10
1019m00334	21.30	1.22	21.42	2.06	21.57	3.42
1019m00315I	20.14	N/A	20.20	N/A	20.24	N/A
1019m00288I	16.26	N/A	16.53	N/A	16.97	N/A
1019m00238	12.90	N/A	12.95	N/A	13.04	N/A
1019m00172	6.53	9.59	6.70	16.33	6.86	25.88

Map:
 Ashford/ Rathnew Fluvial Flood Extents

Map Type: EXTENT

Source: FLUVIAL

Map Area: HPW

Scenario: CURRENT

Drawn By: C.C. **Date:** 15 November 2017

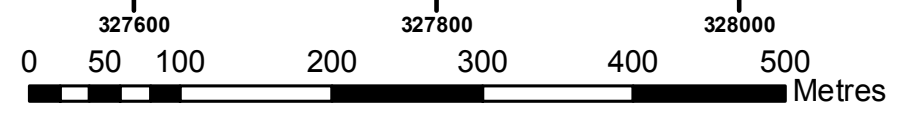
Checked By: D.I. **Date:** 15 November 2017

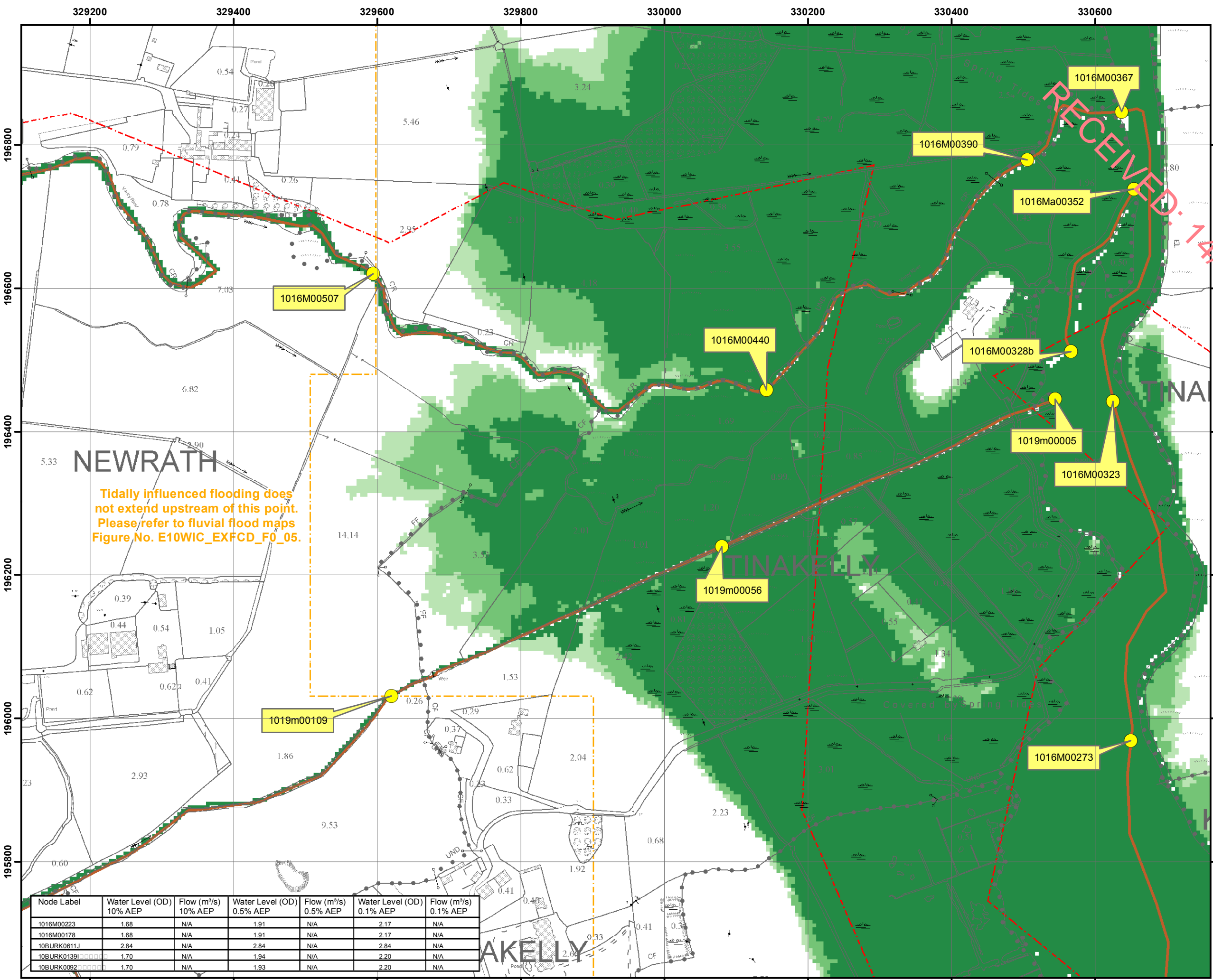
Approved By: S.P. **Date:** 15 November 2017

Drawing No.:
 E10WIC_EXFCD_F2_04

Map Series: Page 4 of 15

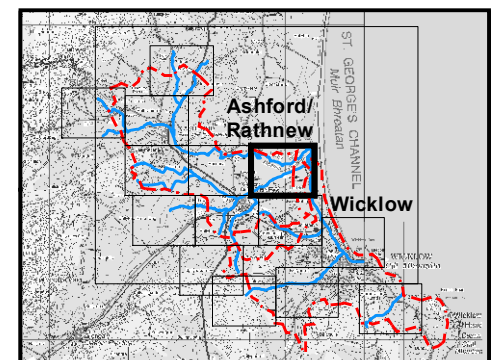
Drawing Scale: 1:5,000 @A3





Tidally influenced flooding does not extend upstream of this point. Please refer to fluvial flood maps Figure No. E10WIC_EXFCD_F0_05.

Node Label	Water Level (OD) 10% AEP	Flow (m ³ /s) 10% AEP	Water Level (OD) 0.5% AEP	Flow (m ³ /s) 0.5% AEP	Water Level (OD) 0.1% AEP	Flow (m ³ /s) 0.1% AEP
1016M00223	1.68	N/A	1.91	N/A	2.17	N/A
1016M00178	1.68	N/A	1.91	N/A	2.17	N/A
10BURK0611J	2.84	N/A	2.84	N/A	2.84	N/A
10BURK0139I	1.70	N/A	1.94	N/A	2.20	N/A
10BURK0092	1.70	N/A	1.93	N/A	2.20	N/A



IMPORTANT USER NOTE:
THE VIEWER OF THIS MAP SHOULD REFER TO THE DISCLAIMER, GUIDANCE NOTES AND CONDITIONS OF USE THAT ACCOMPANY THIS MAP.

- Legend**
- 10% Tidal AEP Event
 - 0.5% Tidal AEP Event
 - 0.1% Tidal AEP Event
 - Modelled River Centreline
 - AFA Extents
 - Embankment
 - Wall
 - Defended Area
 - 1% AEP Standard of Protection of Flood Defence (Walls / Embankments)
 - 1% AEP
 - Node Point
 - Node ID Node Label

FINAL

REV: 01	NOTE: Corrected Node Table	DATE: 28/04/17
---------	----------------------------	----------------

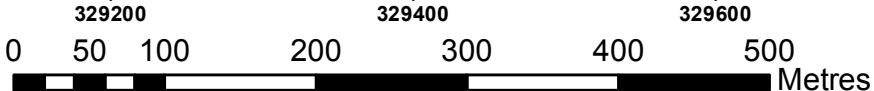


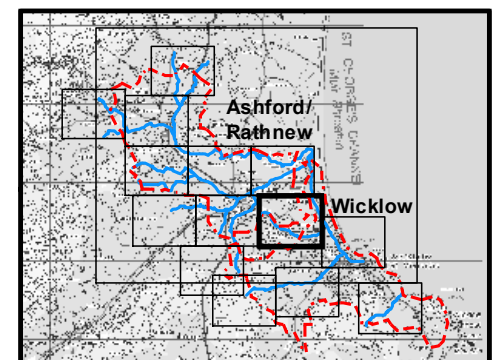
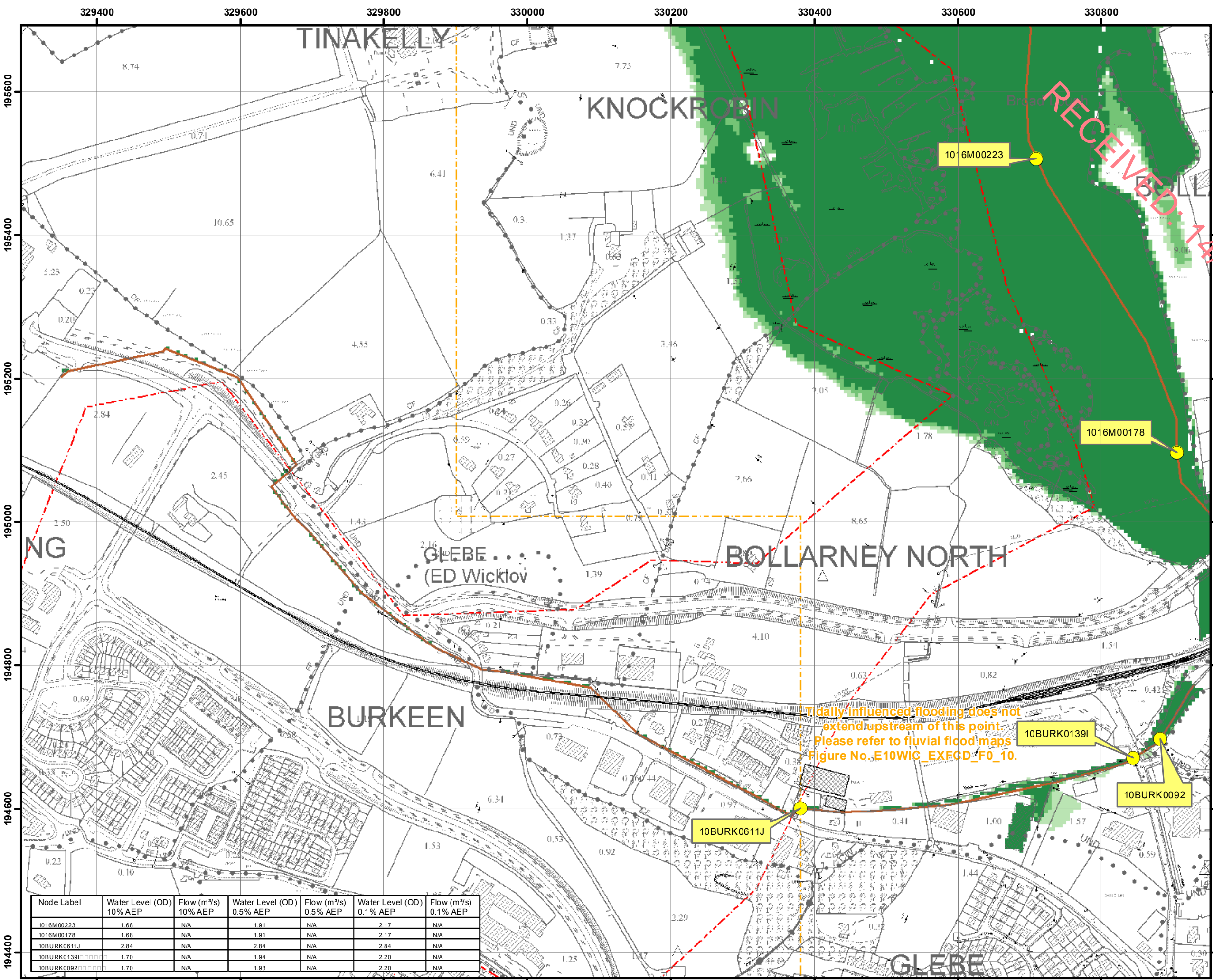
The Office of Public Works
Jonathan Swift Street
Trim
Co Meath

Elmwood House
74 Boucher Road
Belfast
BT12 6RZ

T +44(0) 28 90 667914
F +44(0) 28 90 668286
W www.rpsgroup.com
E ireland@rpsgroup.com

Map: Ashford/ Rathnew Tidal Flood Extents
Map Type: EXTENT
Source: TIDAL
Map Area: COASTAL
Scenario: CURRENT
Drawn By: C.C. Date: 5 December 2017
Checked By: D.I. Date: 5 December 2017
Approved By: S.P. Date: 5 December 2017
Drawing No.: E10WIC_EXCCD_F2_05
Map Series: Page 5 of 15
Drawing Scale: 1:5,000 @A3





IMPORTANT USER NOTE:
THE VIEWER OF THIS MAP SHOULD REFER TO THE DISCLAIMER, GUIDANCE NOTES AND CONDITIONS OF USE THAT ACCOMPANY THIS MAP.

Legend

- 10% Tidal AEP Event
- 0.5% Tidal AEP Event
- 0.1% Tidal AEP Event
- Modelled River Centreline
- AFA Extents
- Embankment
- Wall
- Defended Area
- 1% AEP Standard of Protection of Flood Defence (Walls / Embankments)
- Node Point
- Node ID Node Label

FINAL

REV: 02	NOTE: Coastal Defended Area removed	DATE: 15/11/17
REV: 01	NOTE: Corrected Node Table	DATE: 28/04/17



The Office of Public Works
Jonathan Swift Street
Trim
Co Meath

Elmwood House
74 Boucher Road
Belfast
BT12 6RZ
Eireland@rpsgroup.com

Map:
Wicklow/Ashford/ Rathnew Tidal Flood Extents

Map Type:	EXTENT
Source:	TIDAL
Map Area:	COASTAL
Scenario:	CURRENT
Drawn By:	C.C. Date: 15 November 2017
Checked By:	D.I. Date: 15 November 2017
Approved By:	S.P. Date: 15 November 2017
Drawing No.:	E10WIC_EXCCD_F2_10
Map Series:	Page 10 of 15
Drawing Scale:	1:5,000 @A3

Node Label	Water Level (OD) 10% AEP	Flow (m ³ /s) 10% AEP	Water Level (OD) 0.5% AEP	Flow (m ³ /s) 0.5% AEP	Water Level (OD) 0.1% AEP	Flow (m ³ /s) 0.1% AEP
1016M00223	1.68	N/A	1.91	N/A	2.17	N/A
1016M00178	1.68	N/A	1.91	N/A	2.17	N/A
10BURK0611J	2.84	N/A	2.84	N/A	2.84	N/A
10BURK0139I	1.70	N/A	1.94	N/A	2.20	N/A
10BURK0092	1.70	N/A	1.93	N/A	2.20	N/A

