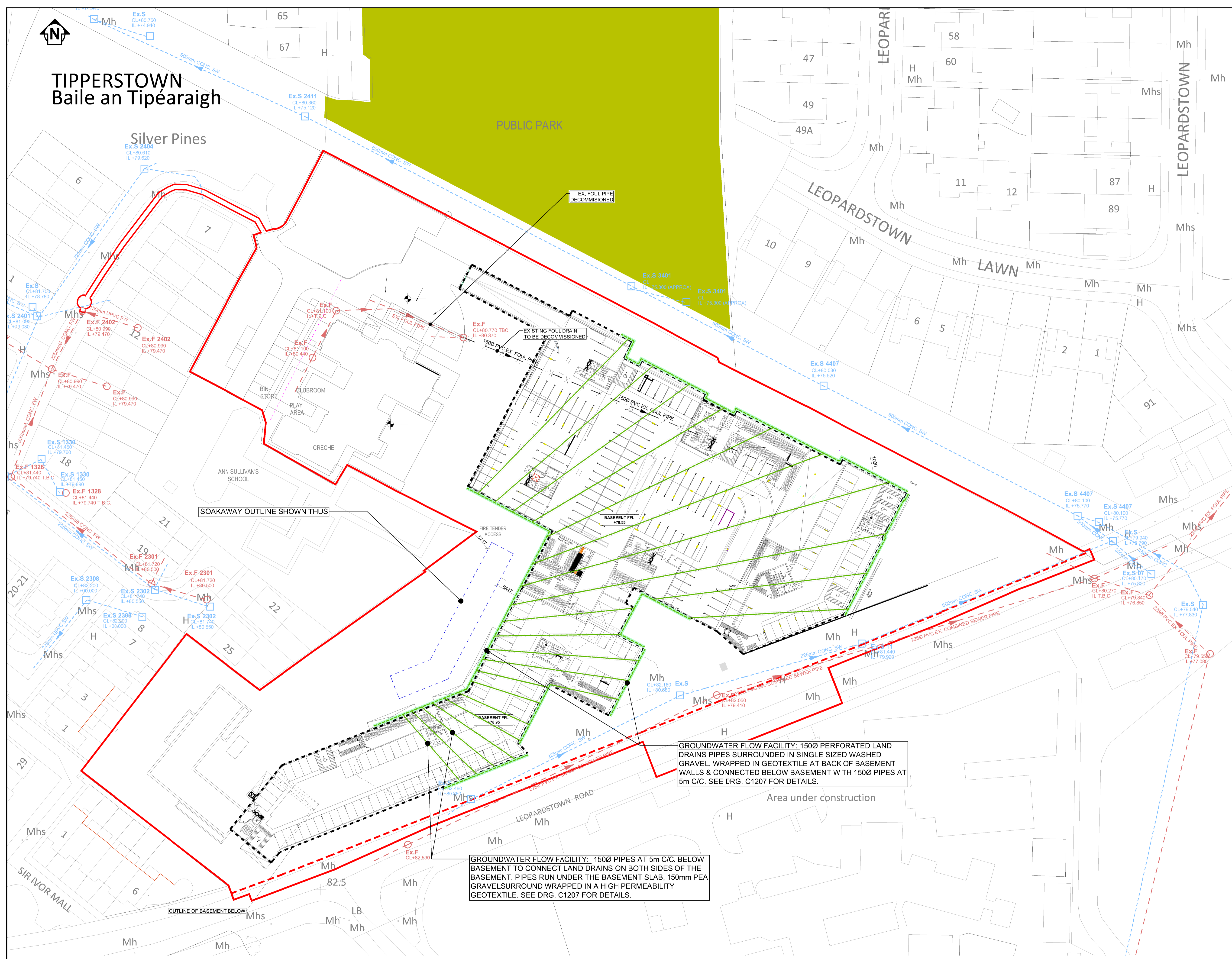




TIPPERSTOWN
Baile an Tipéaraigh



NOTES	
1.	THIS DRAWING IS TO BE READ IN CONJUNCTION WITH ALL ENGINEERS & ARCHITECT'S DRAWINGS. FIGURED DIMENSIONS ONLY (NOT SCALING) TO BE USED. WHERE A CONFLICT OF INFORMATION EXISTS OR IF IN ANY DOUBT - 'ASK'.
2.	CONSULTANTS TO BE INFORMED IMMEDIATELY OF ANY DISCREPANCIES BEFORE WORK PROCEEDS.

LEGEND	
Ø150 DRAINS UNDER BASEMENT	
Ø150 FRENCH DRAIN	

SOAKAWAY OUTLINE SHOWN THUS

GROUNDWATER FLOW FACILITY: 150Ø PERFORATED LAND DRAINS PIPES SURROUNDED IN SINGLE SIZED WASHED GRAVEL, WRAPPED IN GEOTEXTILE AT BACK OF BASEMENT WALLS & CONNECTED BELOW BASEMENT WITH 150Ø PIPES AT 5m C/C. SEE DRG. C1207 FOR DETAILS.

GROUNDWATER FLOW FACILITY: 150Ø PIPES AT 5m C/C. BELOW BASEMENT TO CONNECT LAND DRAINS ON BOTH SIDES OF THE BASEMENT. PIPES RUN UNDER THE BASEMENT SLAB, 150mm PEA GRAVEL SURROUND WRAPPED IN A HIGH PERMEABILITY GEOTEXTILE. SEE DRG. C1207 FOR DETAILS.

SOAKAWAY FLOW ROUTING PLAN UNDER THE BASEMENT

SCALE @ A1: 1:500
SCALE @ A3: 1:1000

PL1	20.09.21	ISSUED FOR PLANNING	WK	PS	IC
ISSUE	DATE	DESCRIPTION	DRN	ORIG	P.F.

DRAWING STAGE: **PLANNING**

BM
Barrett Mahony
Consulting Engineers, Civ. Structural - Project Management. E-mail: bmce@bmce.ie Web: www.bmce.ie

The Institution of Structural Engineers

ACEI
International Federation of Consulting Engineers

CLIENT: **HOMELAND SILVERPINES LTD.**

PROJECT TITLE	BM PROJECT No.
SHD AT ST. JOSEPH'S HOUSE AND ADJOINING PROPERTIES	19.236
MODEL REFERENCE	MODEL REV. SUITABILITY

DRAWING TITLE: **SOAKAWAY FLOW ROUTING PLAN UNDER THE BASEMENT**

DRAWING No.	ISSUE
BPR-BMD-00-00-DR-C-1007	PL1