

DEVELOPMENT NOT TO BE TAKEN IN-CHARGE. PRIVATE MANAGEMENT COMPANY TO BE PROVIDED.

**NOTES**

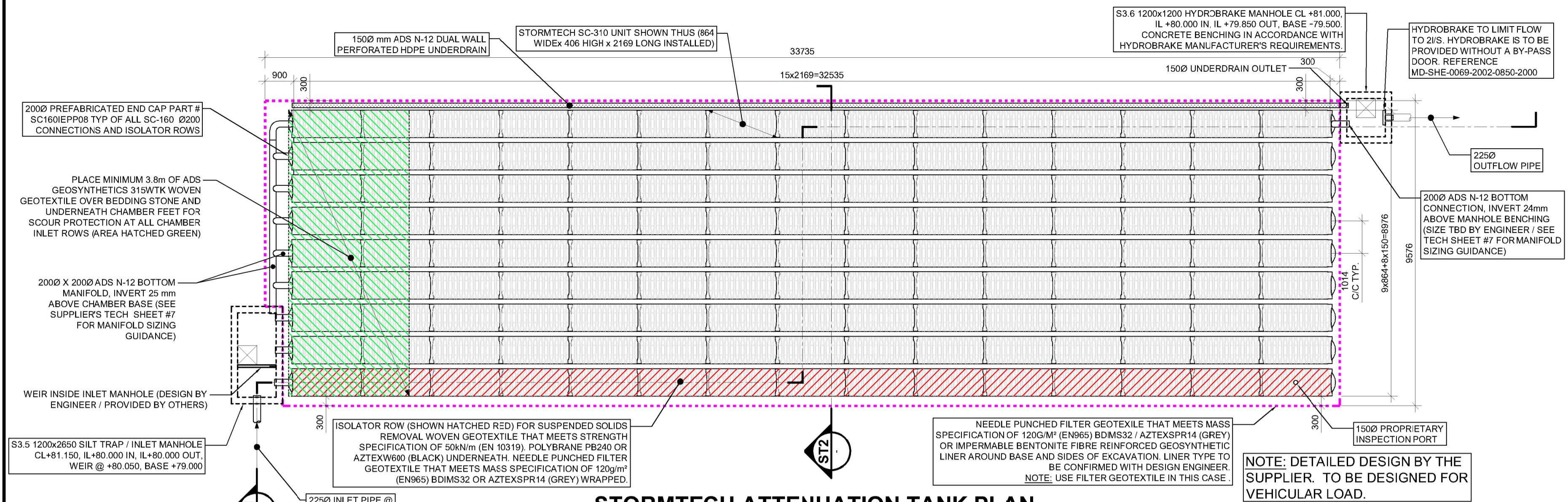
- THIS DRAWING IS TO BE READ IN CONJUNCTION WITH ALL ENGINEERS & ARCHITECTS DRAWINGS FIGURED DIMENSIONS ONLY (NOT SCALING) TO BE USED. WHERE A CONFLICT OF INFORMATION EXISTS OR IF IN ANY DOUBT - 'ASK'.
- CONSULTANTS TO BE INFORMED IMMEDIATELY OF ANY DISCREPANCIES BEFORE WORK PROCEEDS.

**MAINTENANCE REQUIREMENTS FOR PERMEABLE PAVEMENTS**

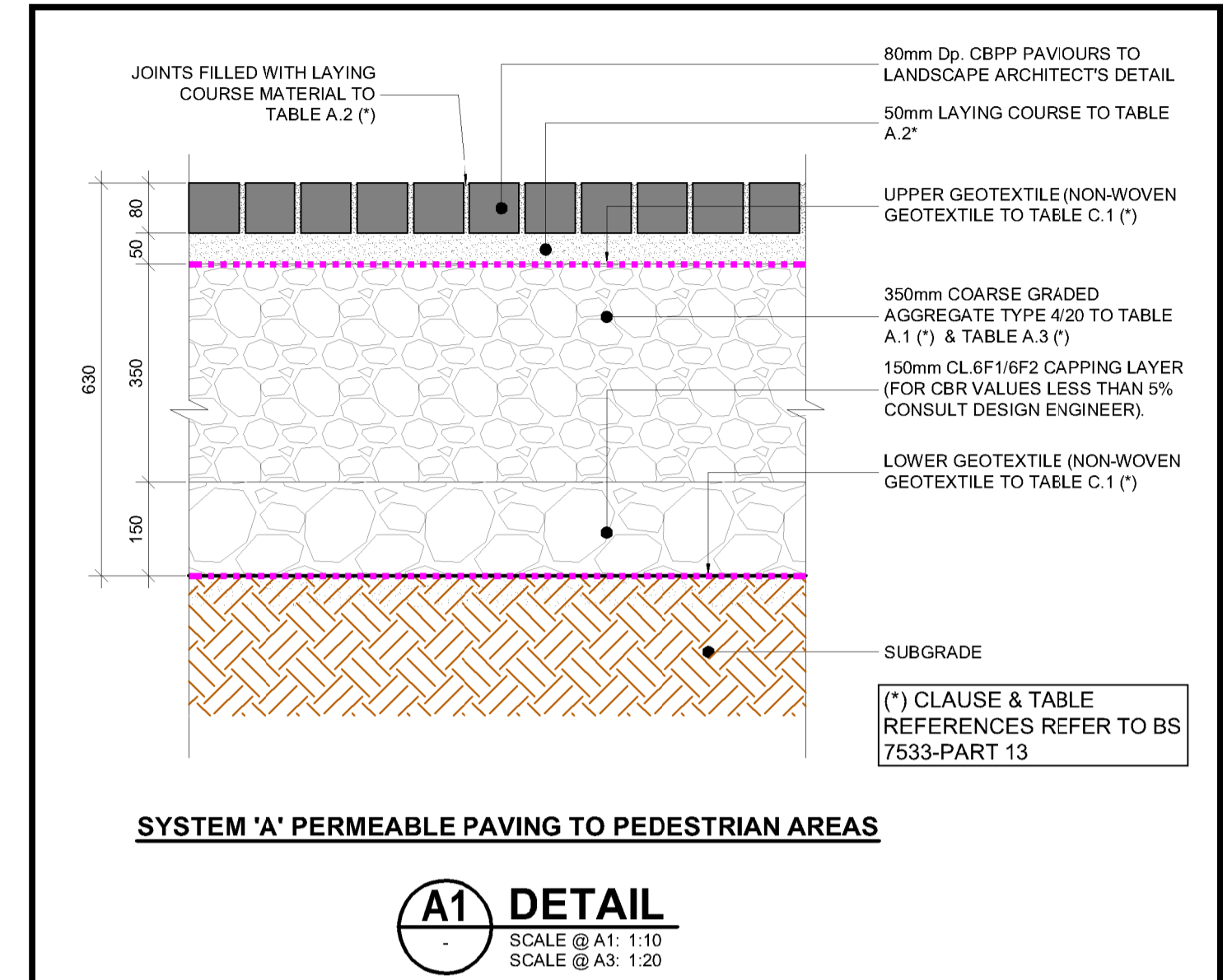
**REGULAR MAINTENANCE**  
BRUSHING AND VACUUMING (STANDARD COSMETIC SWEEP OVER WHOLE SURFACE). ONCE A YEAR, AFTER AUTUMN LEAF FALL, OR REDUCED FREQUENCY AS REQUIRED, BASED ON SITE-SPECIFIC OBSERVATION OF CLOGGING OR MANUFACTURER'S RECOMMENDATIONS - PAY PARTICULAR ATTENTION TO AREAS WHERE WATER RUNS ONTO PERVIOUS SURFACE FROM ADJACENT IMPERMEABLE AREAS AS THIS AREA IS MOST LIKELY TO COLLECT THE MOST SEDIMENT.  
STABILISE AND MOW CONTRIBUTING AND ADJACENT AREAS.  
FREQUENCY - AS REQUIRED  
REMOVAL OF WEEDS OR MANAGEMENT USING GLYPHOSATE APPLIED DIRECTLY INTO THE WEEDS BY AN APPLICATOR RATHER THAN SPRAYING. FREQUENCY - AS REQUIRED - ONCE PER YEAR ON LESS FREQUENTLY USED PAVEMENTS

**REMEDIAL ACTIONS**  
REMEDIAL ACTION: ANY LANDSCAPING WHICH, THROUGH VEGETATION MAINTENANCE OR SOIL SLIP, HAS BEEN RAISED TO WITHIN 50mm OF THE LEVEL OF THE PAVING. FREQUENCY - AS REQUIRED  
REMEDIAL WORK TO ANY DEPRESSIONS, RUTTING AND CRACKED OR BROKEN BLOCKS CONSIDERED DETRIMENTAL TO THE STRUCTURAL PERFORMANCE OR HAZARDOUS TO USERS, AND REPLACEMENT OF LOST JOINTING MATERIAL. FREQUENCY - AS REQUIRED  
REHABILITATION OF SURFACE AND UPPER SUBSTRUCTURE BY REMEDIAL SWEEPING. FREQUENCY - EVERY 10 TO 15 YEARS OR AS REQUIRED (IF INFILTRATION PERFORMANCE IS REDUCED DUE TO SIGNIFICANT CLOGGING)

**MONITORING**  
INITIAL INSPECTION: MONTHLY FOR THREE MONTHS AFTER INSTALLATION. INSPECT FOR EVIDENCE OF POOR OPERATION AND/OR WEED GROWTH AND IF REQUIRED, TAKE REMEDIAL ACTION  
THREE-MONTHLY, 48 H AFTER LARGE STORMS IN FIRST SIX MONTHS; INSPECT SILT ACCUMULATION RATES AND ESTABLISH APPROPRIATE BRUSHING FREQUENCIES.  
MONITOR INSPECTION CHAMBERS ANNUALLY

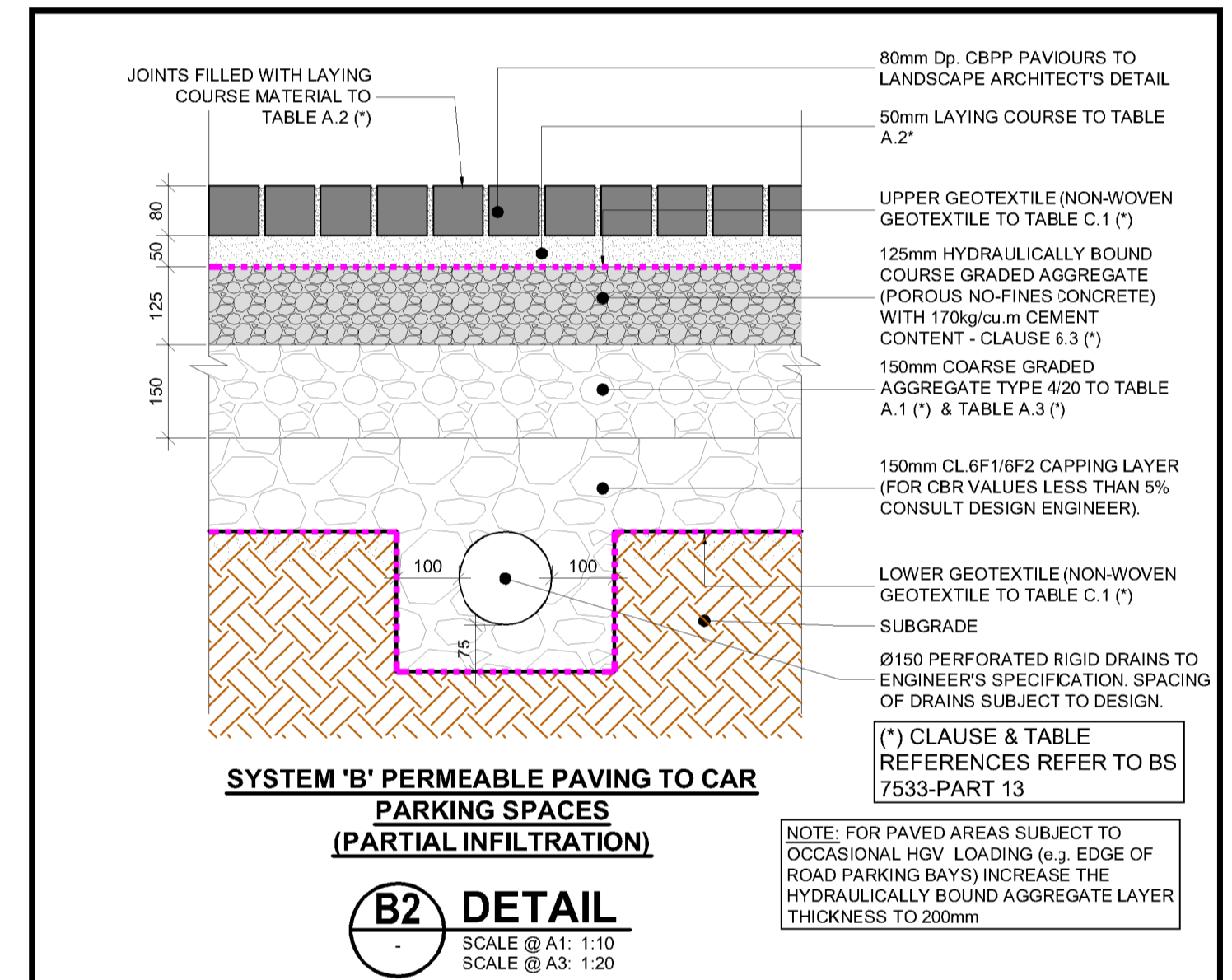


**STORMTECH ATTENUATION TANK PLAN**



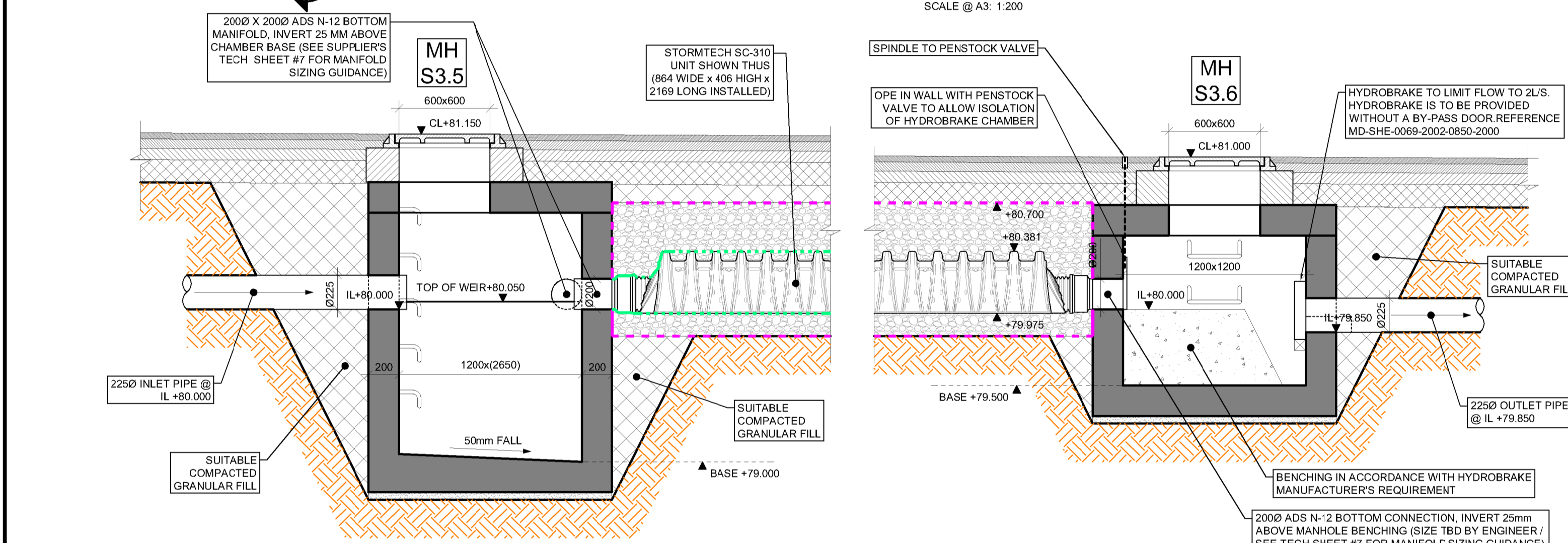
**SYSTEM 'A' PERMEABLE PAVING TO PEDESTRIAN AREAS**

**A1 DETAIL**  
SCALE @ A1: 1:10  
SCALE @ A3: 1:20



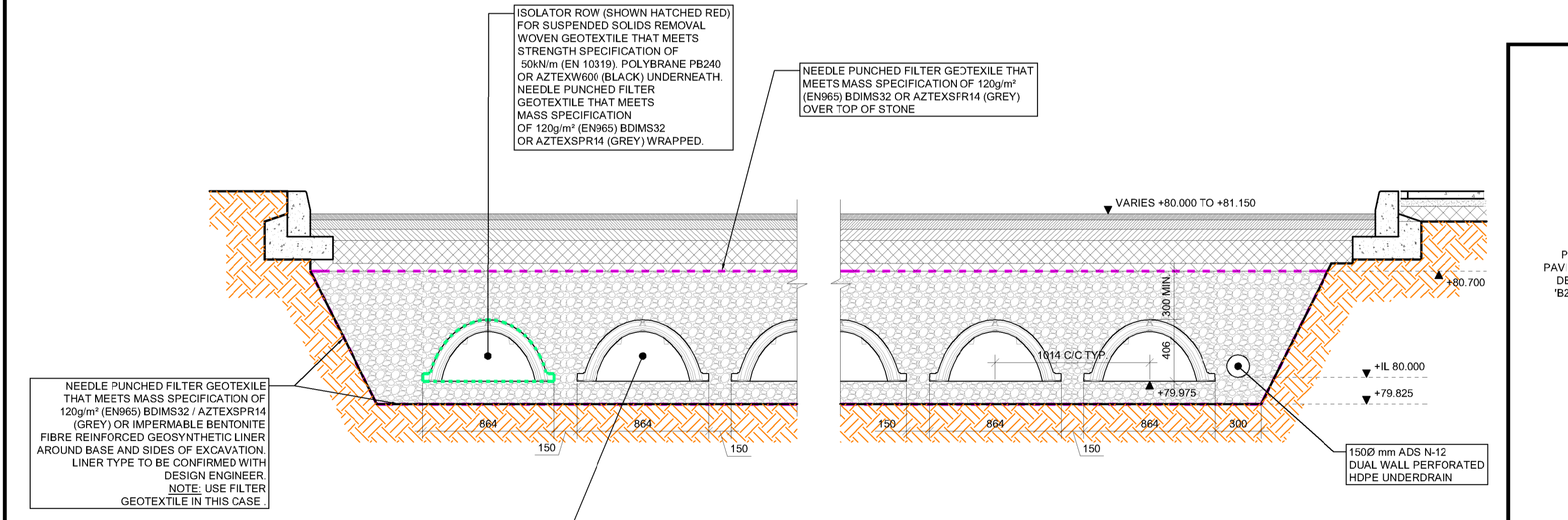
**SYSTEM 'B' PERMEABLE PAVING TO CAR PARKING SPACES (PARTIAL INFILTRATION)**

**B2 DETAIL**  
SCALE @ A1: 1:10  
SCALE @ A3: 1:20



**TYPICAL STORMTECH TANK LONGITUDINAL SECTION**

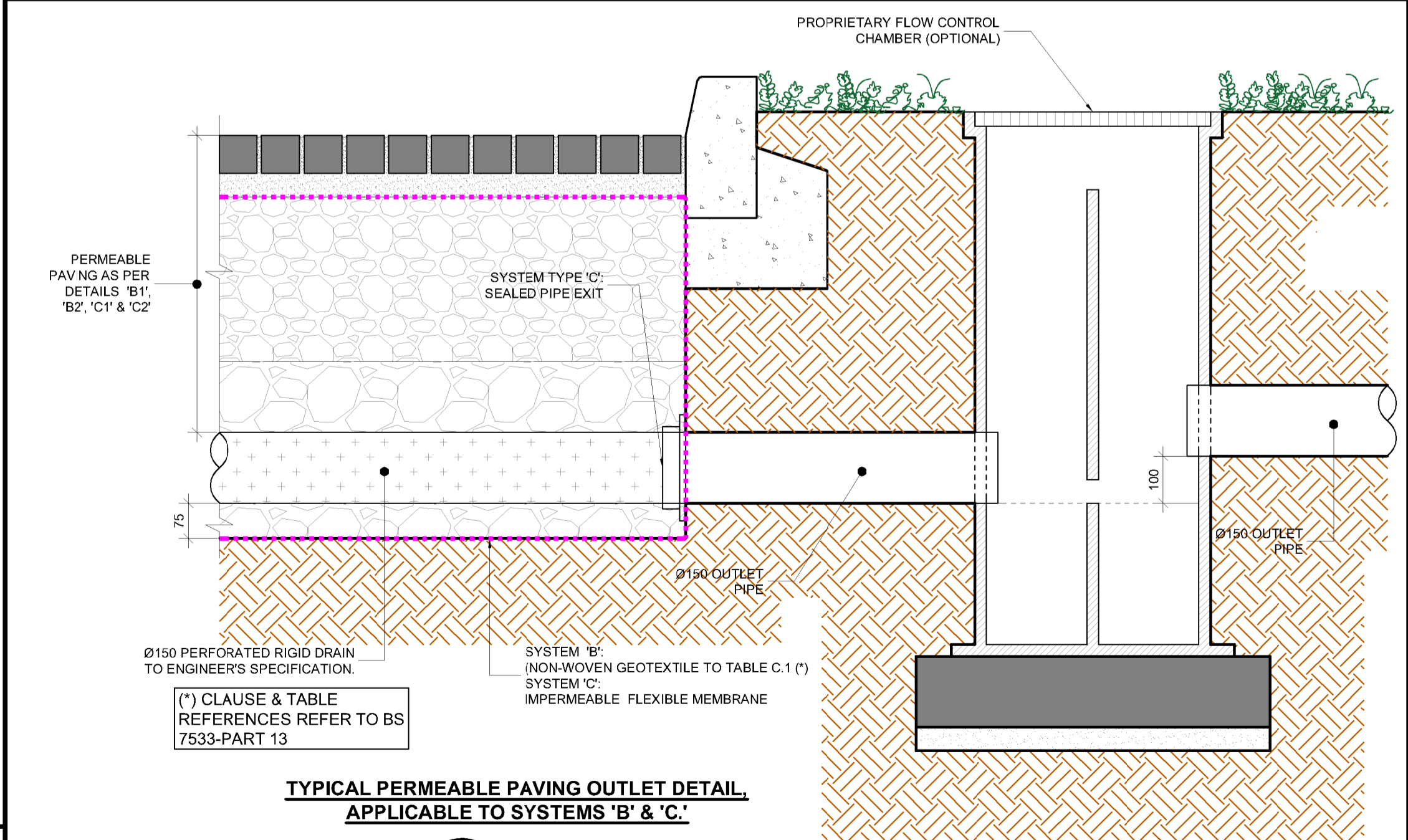
**ST1**  
SCALE @ A1: 1:25  
SCALE @ A3: 1:50



**TYPICAL STORMTECH TANK CROSS SECTION**

**ST2**  
SCALE @ A1: 1:25  
SCALE @ A3: 1:50

**A** **STORMTECH ATTENUATION TANK SUB-CATCHMENT 1 174cu.m CAPACITY**



**TYPICAL PERMEABLE PAVING OUTLET DETAIL, APPLICABLE TO SYSTEMS 'B' & 'C'**

**NT DETAIL**  
SCALE @ A1: 1:10  
SCALE @ A3: 1:20

PL7	20.09.21	ISSUED FOR PLANNING	WK	PS
ISSUE	DATE	DESCRIPTION	DRN	P.E.
			ORIG	P.D.

**PLANNING**

**BM** Dublin Office: Sandwith House, 52-54 Lower Sandwith Street, Dublin 2, Ireland. Tel: (01) 677 3200 Fax: (01) 677 3164  
London Office: 12 Mill Street, London SE1 2AY, United Kingdom. Tel: (0044) 084 5413 2722  
Consulting Engineers, Civ. Structural, Project Management. E-mail: bmce@bmce.ie Web: www.bmce.ie



CLIENT: **HOMELAND SILVERPINES LTD.**

PROJECT TITLE: <b>SHD AT ST. JOSEPH'S HOUSE AND ADJOINING PROPERTIES</b>	BM PROJECT No: <b>19.236</b>
MODEL REFERENCE	MODEL REV. SUITABILITY

DRAWING TITLE: **SuDS DETAILS SHEET 1 OF 4**

DRAWING No: <b>BPR-BMD-00-ZZ-DR-C-1205</b>	ISSUE: <b>PL7</b>
--	-------------------