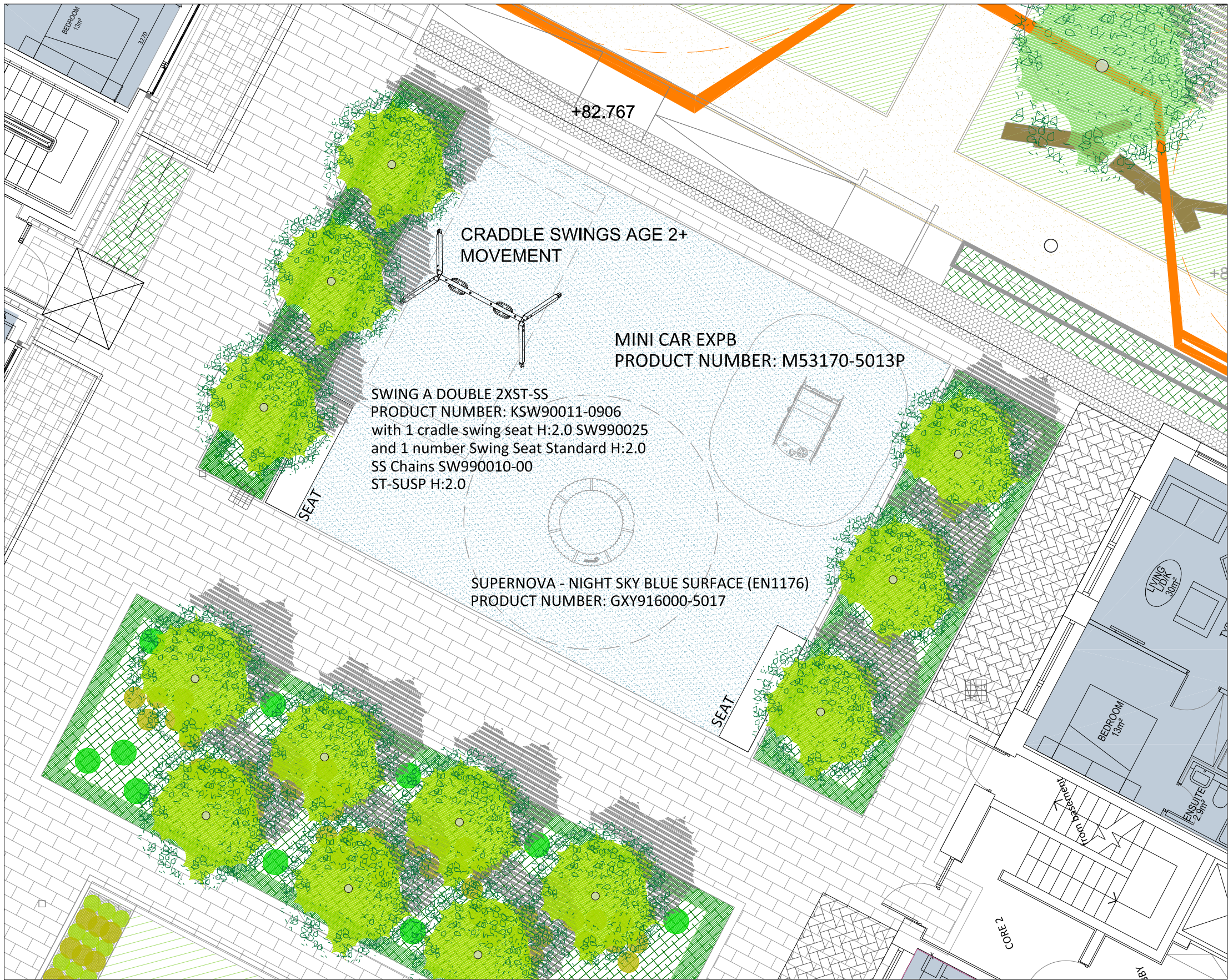
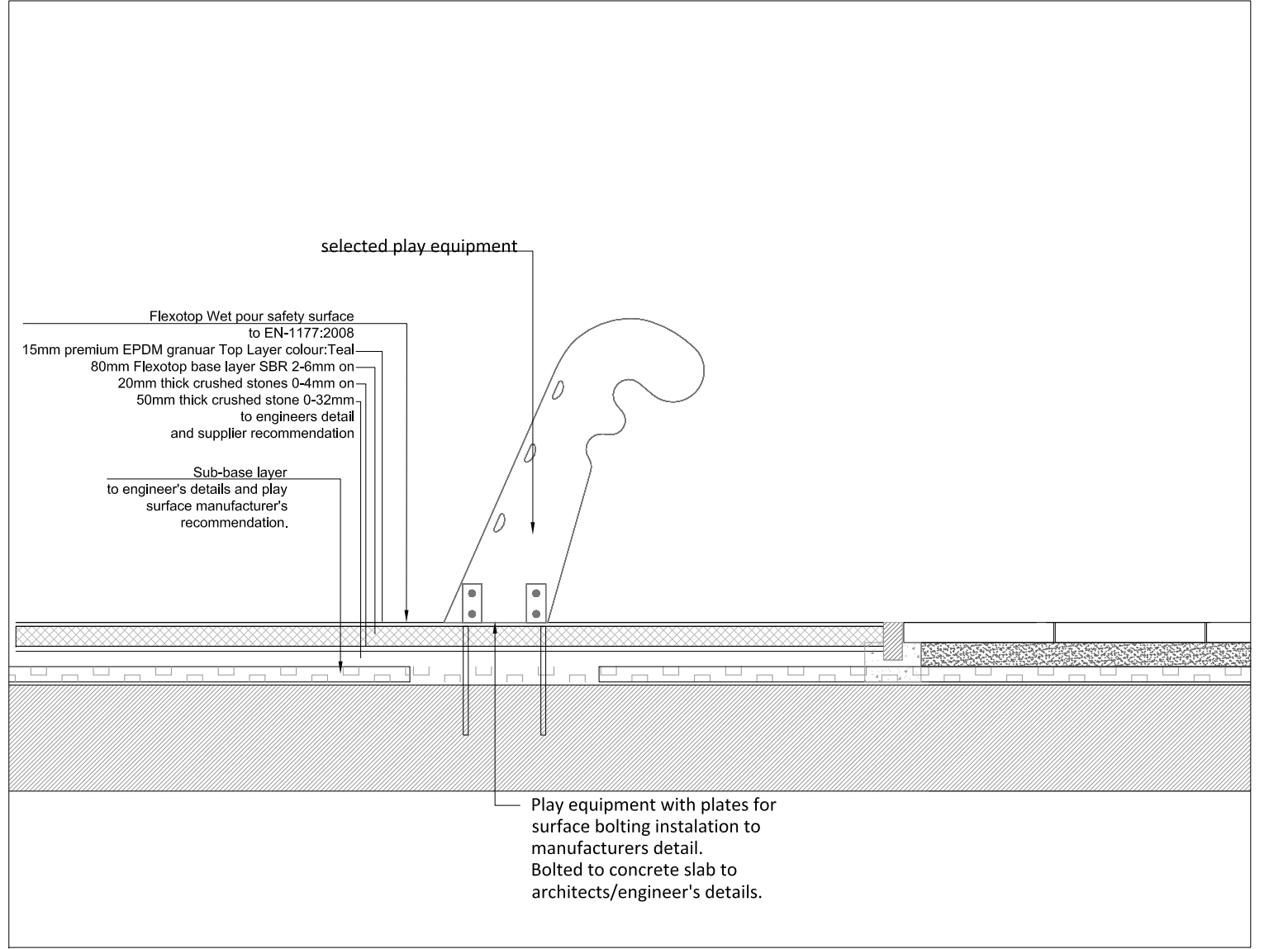




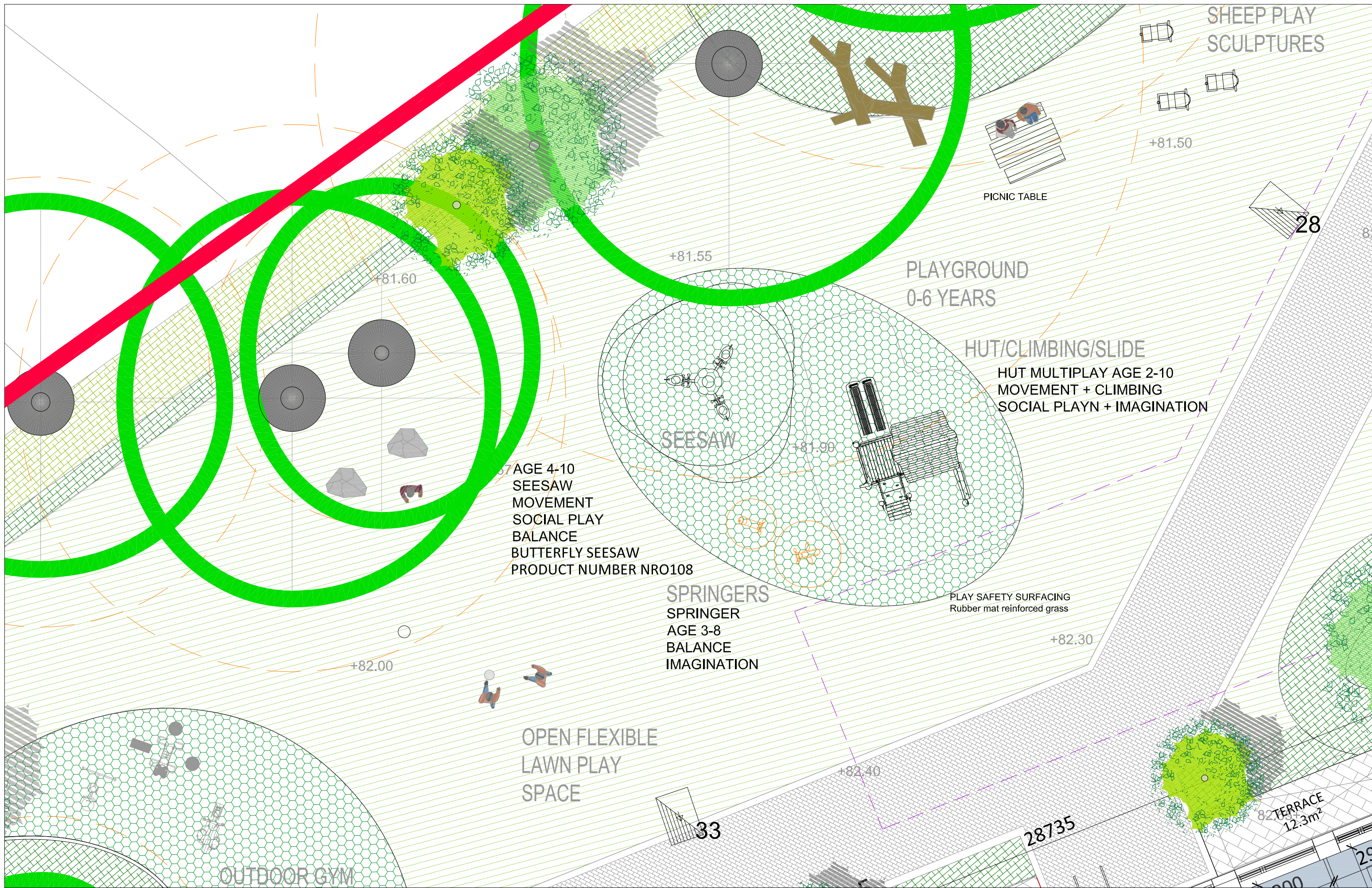
01
103
PLAY AREA KEY PLAN
PLAN 1:1000



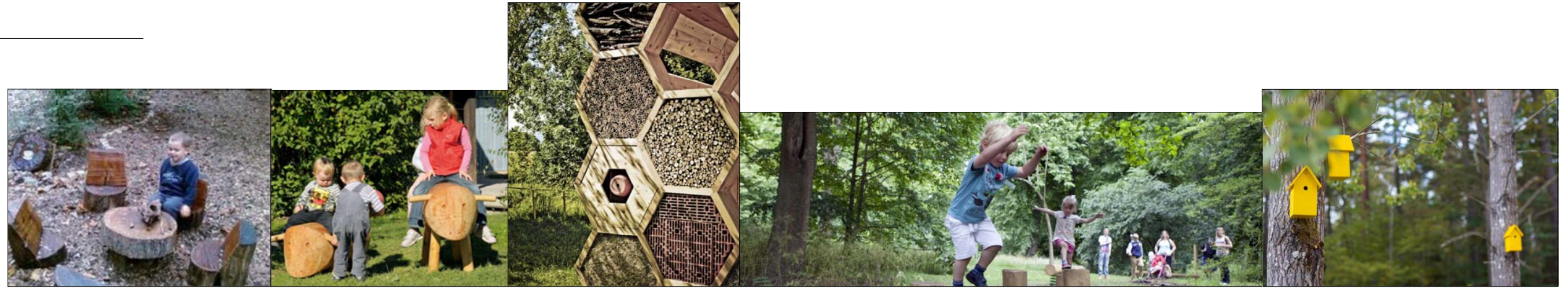
02
103
COURTYARD PLAY AREA
PLAN 1:100



03
103
COURTYARD PLAY AREA
DETAIL SECTION 1:25



04
103
PLAY AREA CENTRAL SPINE
PLAN 1:100



SUPERNOVA - NIGHT SKY BLUE SURFACE (EN1176)
PRODUCT NUMBER: GXY916000-5017
BUTTERFLY SEESAW
PRODUCT NUMBER NRO108
SPRINGER
AGE 3-8
BALANCE
IMAGINATION
MINI CAR EXPB
PRODUCT NUMBER: M53170-5013P

PLAY PLAN STRATEGY
THIS PLAN ILLUSTRATES THE PROVISION FOR NATURAL PLAY AND FORMAL PLAY AREAS FOR CHILDREN BEING MADE IN THE PROPOSED DEVELOPMENT. IT IS INFORMED BY THE NATIONAL CHILDRENS PLAY POLICY 'READY STEADY PLAY' AND SEEKS TO UTILISE EXISTING FEATURES OF THE SITE TO CREATE A NATURAL 'FREE' PLAYGROUND, INCLUSIVE SPACES FOR INFORMAL PLAY FOR ALL AGE GROUPS INCLUDE THE FLEXIBLE LAWN SPACE OF THE CENTRAL SPINE AND COURTYARDS, THE NATURAL AREAS OF THE EXISTING TREES BEING RETAINED AND ALONG THE TREE TRAIL LINEAR OPEN SPACE.

A DEDICATED 0-6 YEARS OLD PLAY ZONE IS LOCATED WITHIN THE PUBLIC OPEN SPACE AND CENTRAL COURTYARD, SMALL PLAY SCULPTURES ARE INCLUDED IN THE LAWN AREAS OF THE DEVELOPMENT.

OLDER CHILDREN AND ALL AGES CAN UTILISE THE ACTIVE PLAY SPACE OF THE TABLE TENNIS FACILITIES AND BASKETBALL/FOOTBALL GOAL HARD STANDING AREA LOCATED CENTRALLY, AN OUTDOOR GYM IS ALSO PROVIDED FOR ALL AGES HEALTH IN THE OUTDOORS.

A PLAY SPACE IS WITHIN 150M OF ALL PROPOSED RESIDENCES WITHIN THE PROPOSED DEVELOPMENT.

THE CHOSEN PLAY EQUIPMENT ENABLES INDIVIDUAL PLAY, GROUP PLAY, SOCIAL INTERACTION, IMAGINATIVE PLAY, CLIMBING AND SLIDING MOVEMENT. THERE IS ADJACENT SCULPTURAL SEATING FOR SUPERVISING ADULTS AS WELL AS PICNIC TABLES FOR SOCIAL INTERACTION.

TREE TRUNKS AND LARGER LIMBS CREATE A SUITE OF NATURAL PLAY EQUIPMENT UNDER THE EXISTING PINE TREES THAT WILL CATER FOR CHILDREN OF ALL AGE GROUPS. THE TREE TRUNKS AND STEPPING LOGS ARE ARRANGED AS AN OBSTACLE COURSE WITH SMALLER TIMBER ANIMALS SCULPTURES CATERING FOR TODDLER PLAY. IT IS PROPOSED TO ALLOW THE GRASS SURFACE TO CONTINUE AROUND THE PLAY ELEMENTS TO INTEGRATE PLAY INTO THE WIDER PUBLIC OPEN SPACE.

THE PLAY AREAS ARE LOCATED CENTRALLY WITHIN THE DEVELOPMENT AND ARE OVERLOOKED AND PASSIVELY SUPERVISED BY THE ADJACENT UNITS AND FOOTPATH NETWORK.

FURTHERMORE THERE ARE FLEXIBLE LAWN SPACES WITHIN THE PUBLIC OPEN SPACE WHICH CAN BE UTILISED FOR A VARIETY OF PLAY OPPORTUNITIES. SETS OF POSTS ACT AS AN INFORMAL GOAL FOR BALL GAMES. SEATING PODS WITH PICNIC TABLES OVERLOOK THESE OPEN LAWN AREAS.

SELECTED PLAY EQUIPMENT SUPPLIED AND MANUFACTURED BY KOMPAN ROBINIA RANGE OR EQUIVALENT
NOTE: all play equipment shall conform to European Standards EN 1176-1-11 and EN 1177 Playground equipment and surfacing. A post installation certification by the Royal Society for the Prevention of Accidents shall be submitted to the local authority.

MITCHELL + ASSOCIATES		Unit 5 Woodpark The Rise Glasnevin Dublin 9 Ireland	
Landscape Architecture Urban Design		t: + 353 1 454 5066 info@mitcheassoc.net	
CLIENT HOMELAND SILVER PINES LIMITED	PROJECT: Strategic Housing Development at St Joseph's House and Adjoining Properties	JOB NO. LBER001	
NOTES Do Not Scale. Use Figured Dimensions Only. Not for Construction Purposes unless Specifically Marked. ©THIS DRAWING IS COPYRIGHT OF MITCHELL + ASSOCIATES	DRAWING: PLAY PLAN	DATE: 2021.09.09	DRAWING NO. 103
	DRAWN BY: CELIA HARRIS	SCALE: as shown @A1	REVISION. -
	STATUS: PLANNING SUBMISSION	CHK'D: CH	