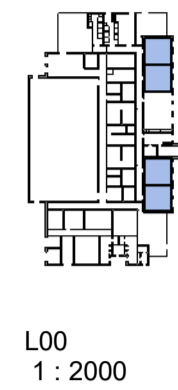
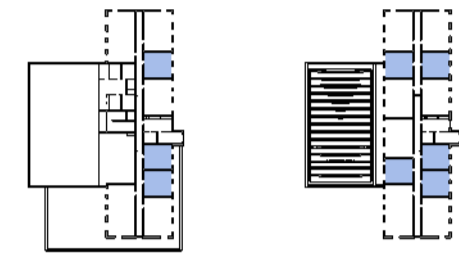


1B2P Type 2A
1: 100

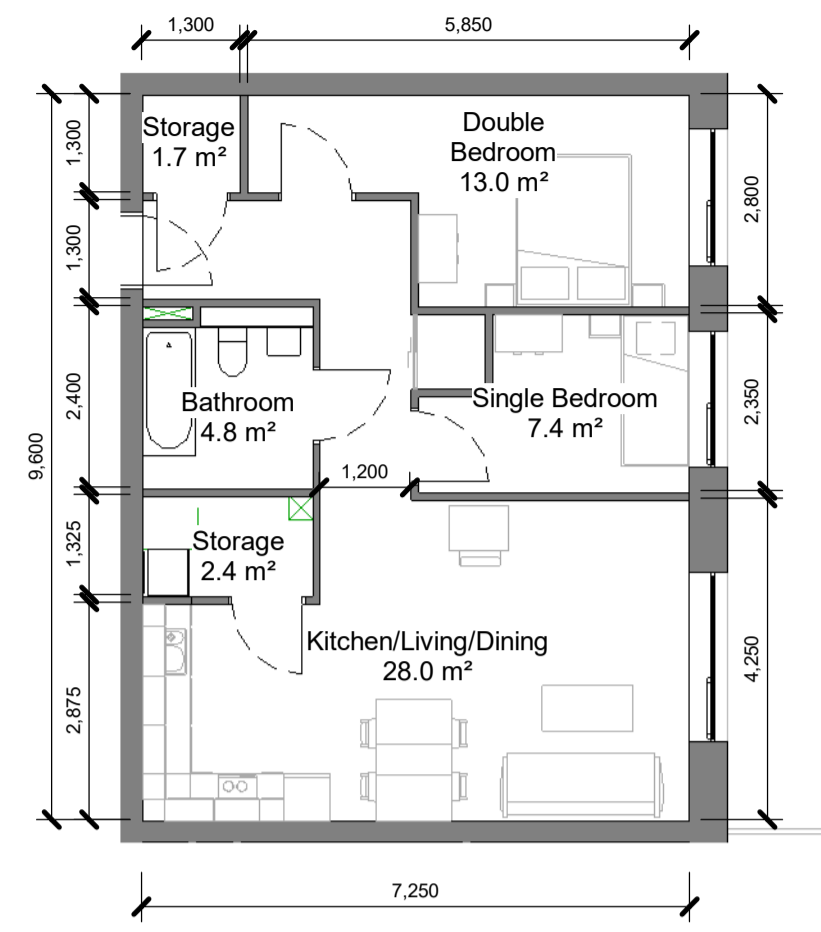


L00
1: 2000

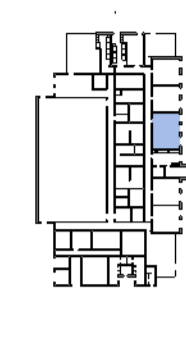


L01
1: 2000

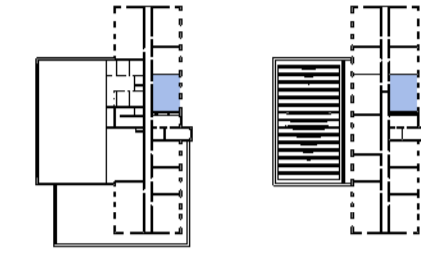
L02 - L03
1: 2000



2B3P Type 3B
1: 100

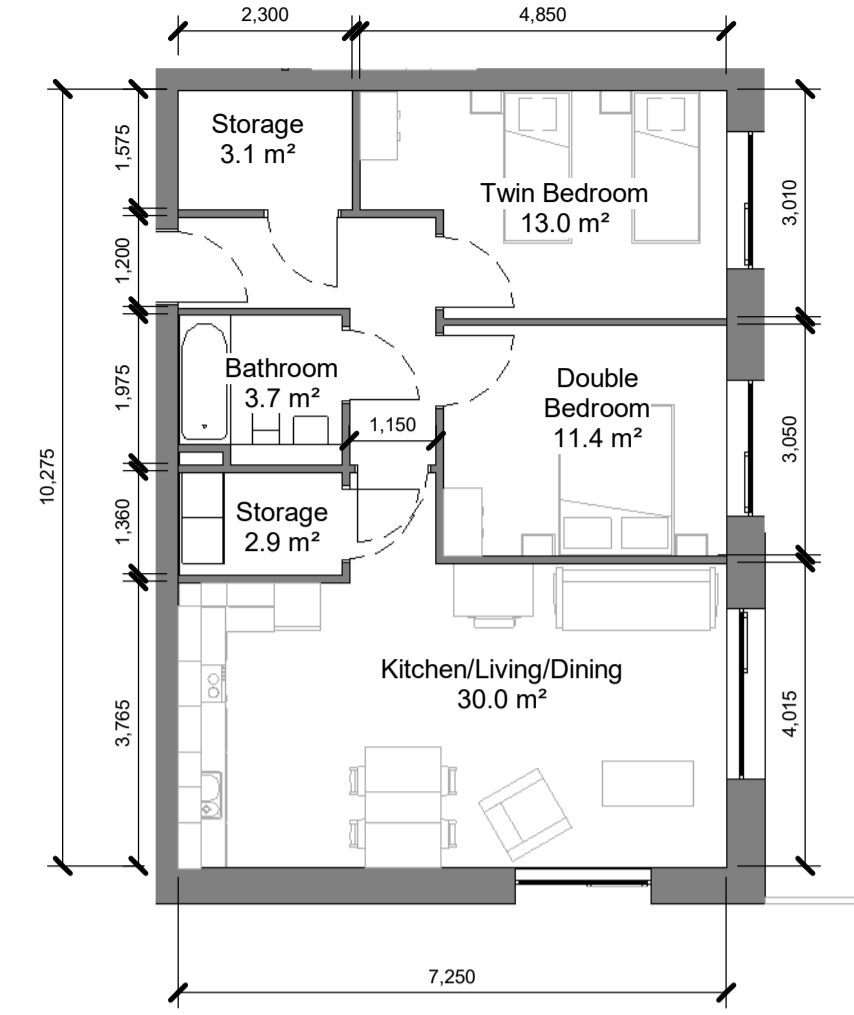


L00
1: 2000

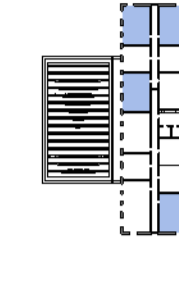


L01
1: 2000

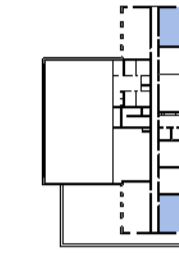
L02 - L03
1: 2000



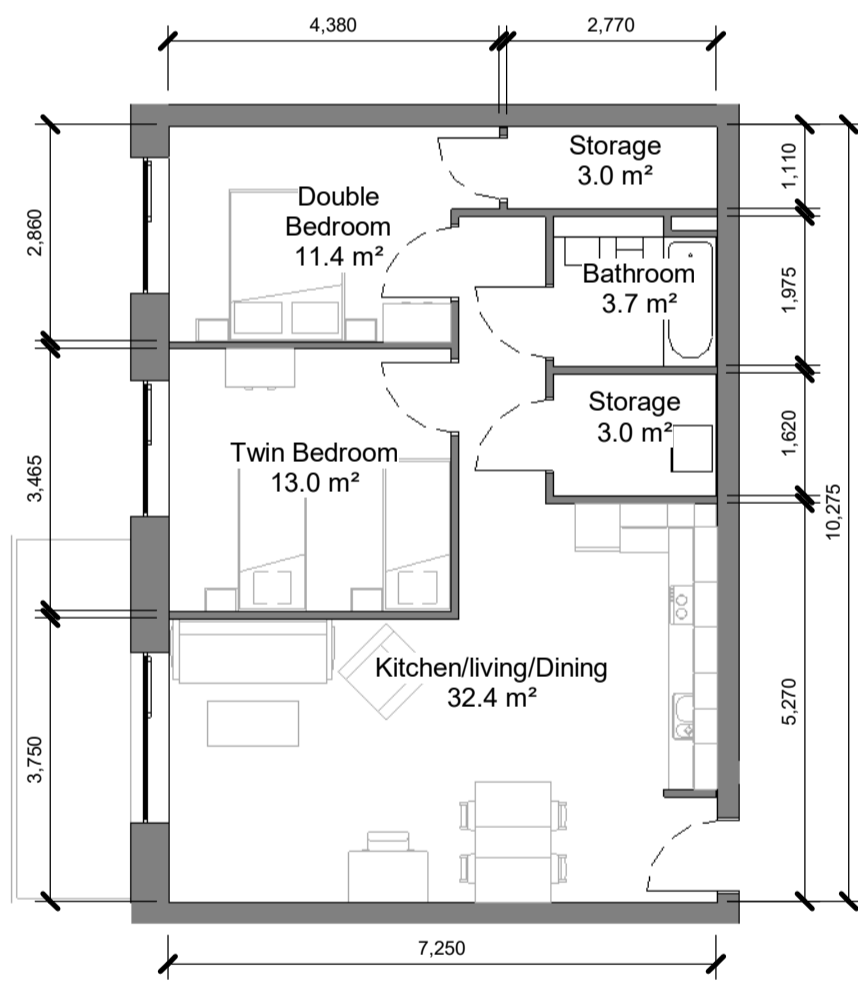
2B4P Type 4B
1: 100



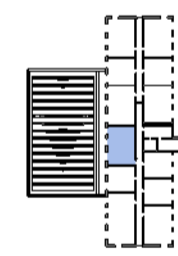
L02 - L03
1: 2000



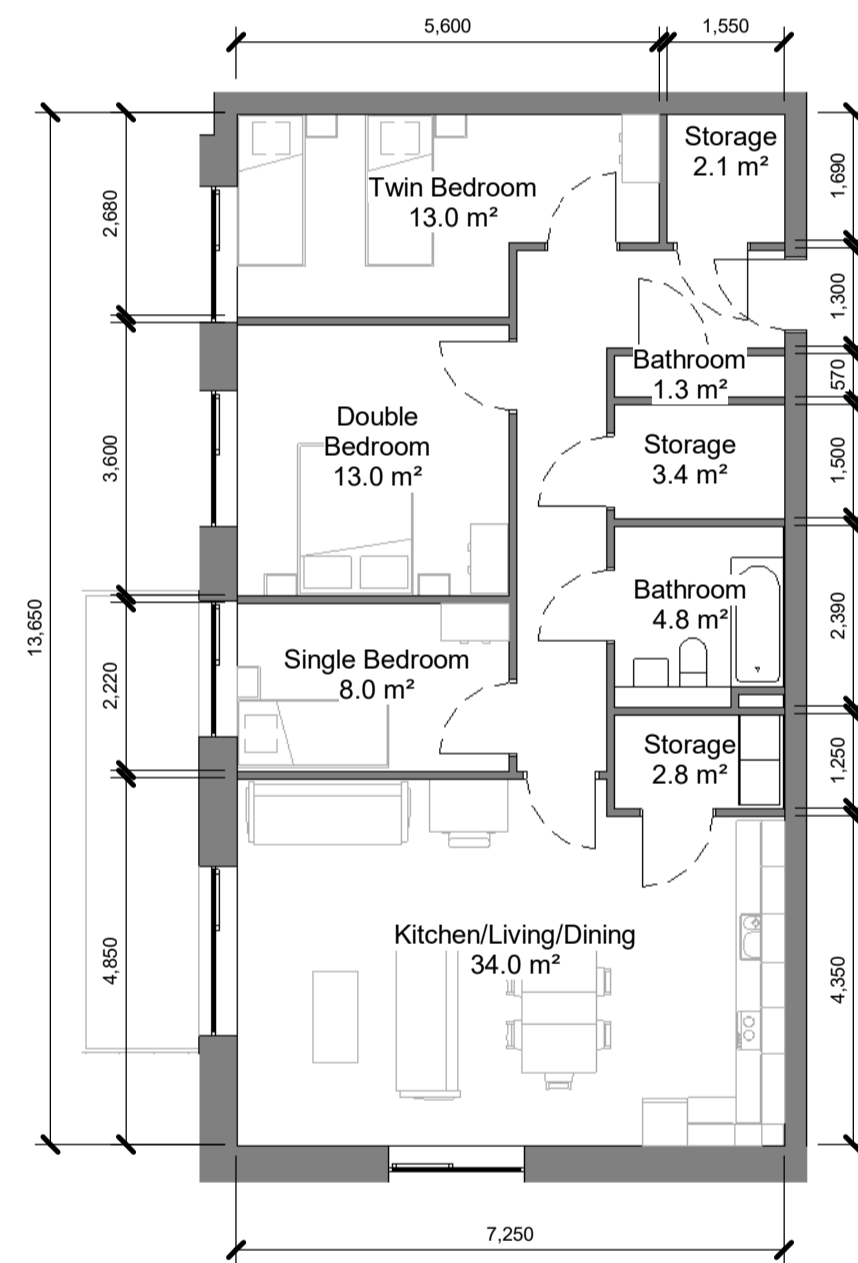
L01
1: 2000



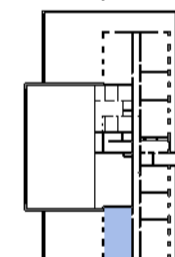
2B4P Type 4C
1: 100



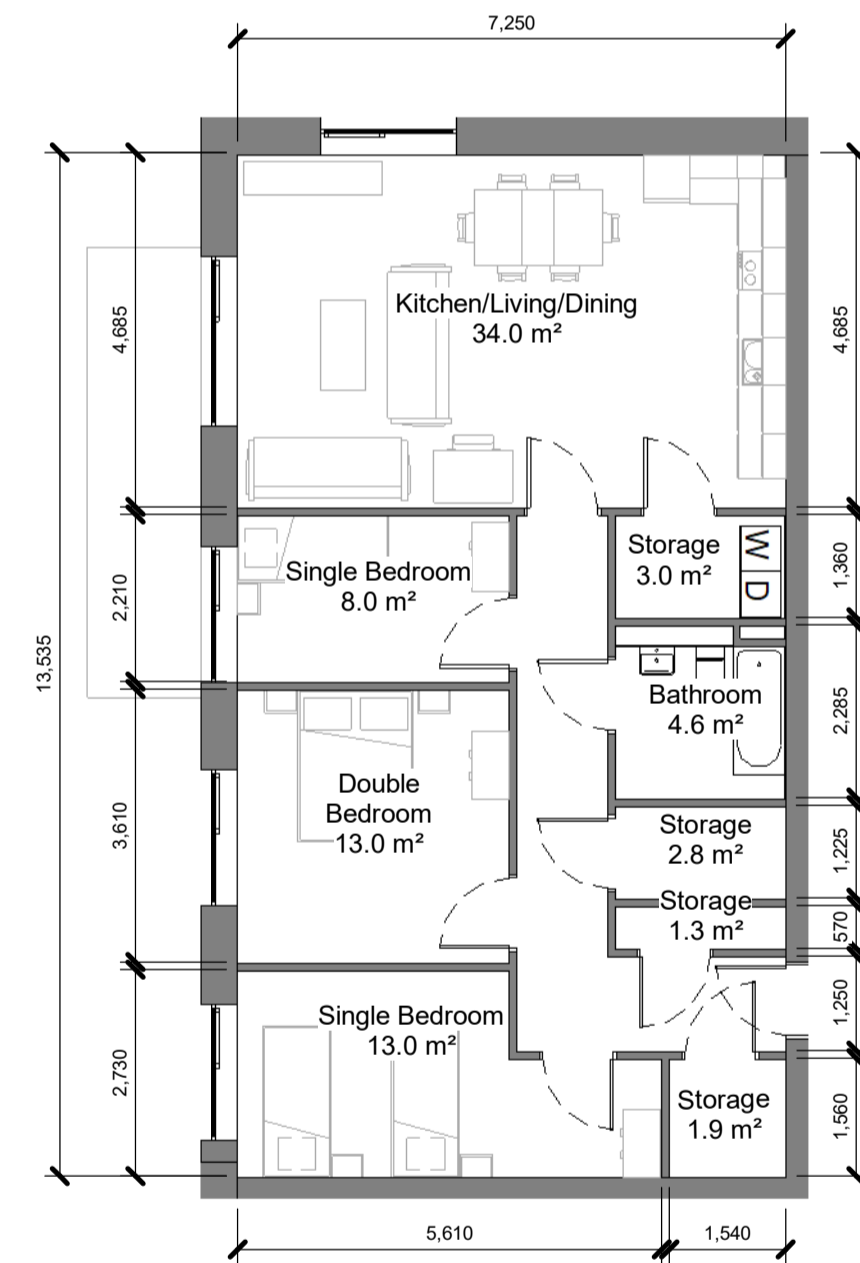
L02 - L03
1: 2000



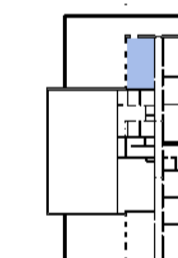
2B5P Type 5A
1: 100



L01 - L03
1: 2000



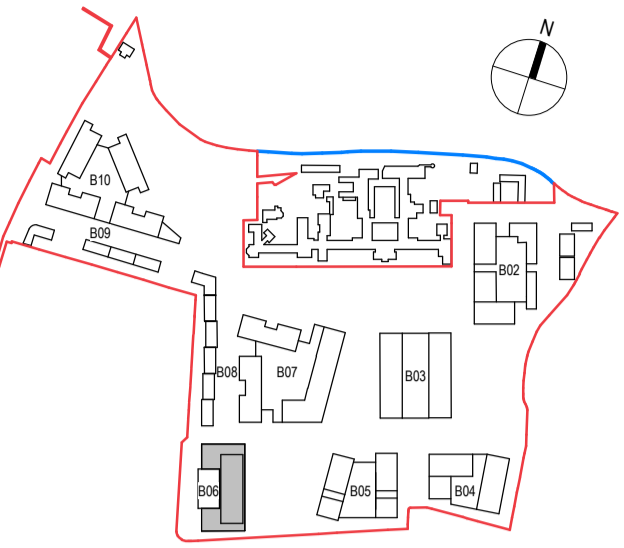
3B5P Type 5A1
1: 100



L01
1: 2000

Notes:
 - Do not scale from this drawing. Use figured dimensions in all cases.
 - Verify dimensions on site and report any discrepancies to the Architect immediately.
 - This drawing is to be read in conjunction with the Architect's Specification.
 - © This drawing is copyright and may only be reproduced with the Architect's permission.

Drawing Notes:



Rev.	Date	Drawn	Details of Issue / Revision
P3 S-1	Sept 2024	KP	Part 10 Planning Application

Issues & Revisions



Dartry Mills,
 Dartry Road
 Dublin 6,
 D06 Y0E3
 T: +353 (0)1 498 7000
 W: www.reddyarchitecture.com
 E: info@reddyarchitecture.com

Applicant Details:
Dún Laoghaire-Rathdown County Council

Agent Details:
Land Development Agency

Project Details:
**Proposed Part 10 Residential Development,
 Dundrum Central Development,
 Dundrum Road,
 Dublin 14**

Drawing Title:
Block 06, Typologies 01

Job No.	Sheet Size:	Scale @A1:
P19-233D	A1_Landscape	As indicated
Issue Date:	Drawn By:	Reviewed By:
Sept 2024	K. Potocka	R. Quinn

Status	Purpose of Issue
P3	Part 10 Planning Application

Project - System - Spatial Zone - Level - Type - Originator - Role - Number	Revision
DCD-02-B06-ZZZ-DR-RAU-AR-1620	P3 S-1