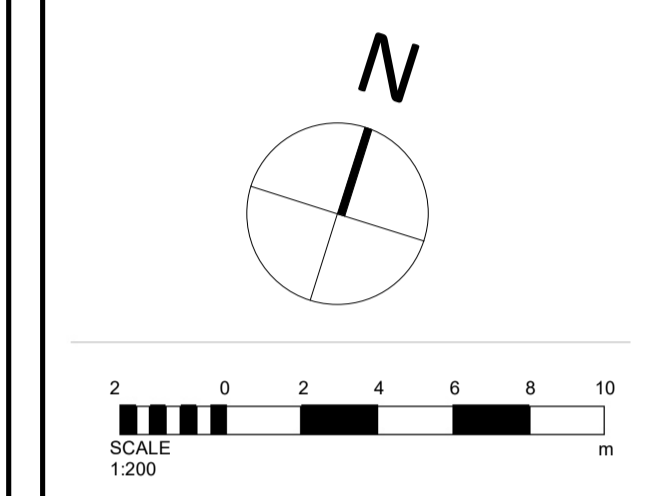
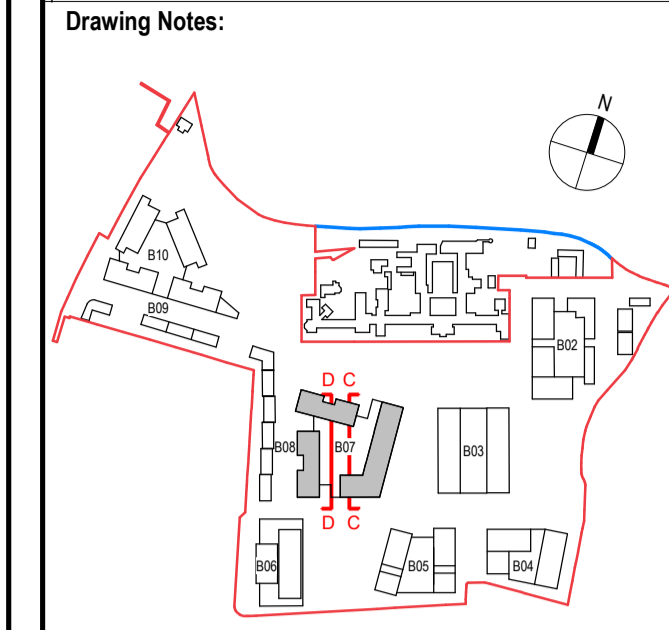
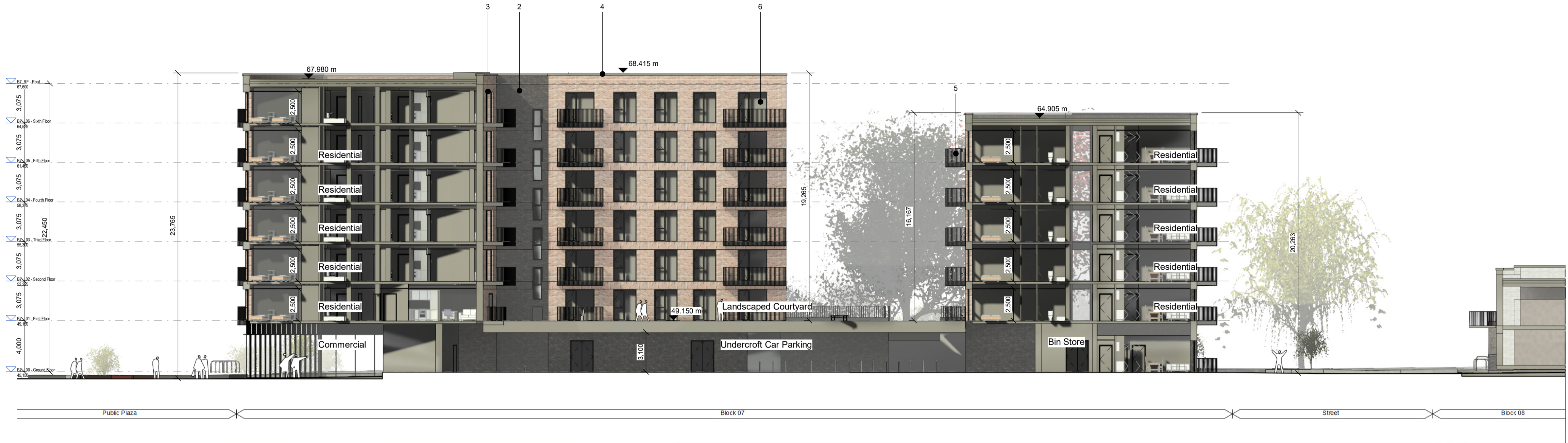


Notes:
 - Do not scale from this drawing. Use figured dimensions in all cases.
 - Verify dimensions on site and report any discrepancies to the Architect immediately.
 - This drawing is to be read in conjunction with the Architect's Specification.
 - © This drawing is copyright and may only be reproduced with the Architect's permission.



- Material Legend**
- 01 SELECTED BUFF BRICK
 - 02 SELECTED DARK BRICK
 - 03 SELECTED RED BRICK
 - 04 SELECTED METAL CAPPING
 - 05 SELECTED METAL BALCONY AND RAILING
 - 06 SELECTED DOORS AND WINDOWS



Section C-C
1 : 200



Section D-D
1 : 200

Rev.	Date	Drawn	Details of Issue / Revision
P3 S-1	Sept 2024	KP	Part 10 Planning Application

Issues & Revisions

Dartry Mills,
Dartry Road
Dublin 6,
D06 Y0E3

T: +353 (0)1 498 7000
W: www.reddyarchitecture.com
E: info@reddyarchitecture.com

Applicant Details:
Dún Laoghaire-Rathdown County Council

Agent Details:
Land Development Agency

Project Details:
Proposed Part 10 Residential Development, Dundrum Central Development, Dundrum Road, Dublin 14

Drawing Title:
Block 07, GA Sections 02

Job No. P19-233D	Sheet Size: A1_Landscape	Scale @A1: 1 : 200
Issue Date: Sept 2024	Drawn By: K. Potocka	Reviewed By: R. Quinn

Status: P3	Purpose of Issue: Part 10 Planning Application
Project - System - Spatial Zone - Level - Type - Originator - Role - Number: DCD-02-B07-ZZZ-DR-RAU-AR-3702	Revision: P3 S-1