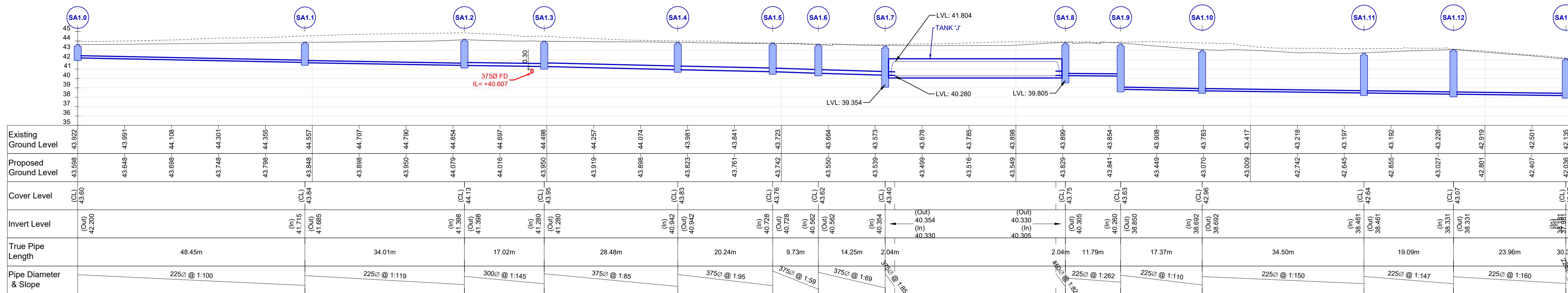
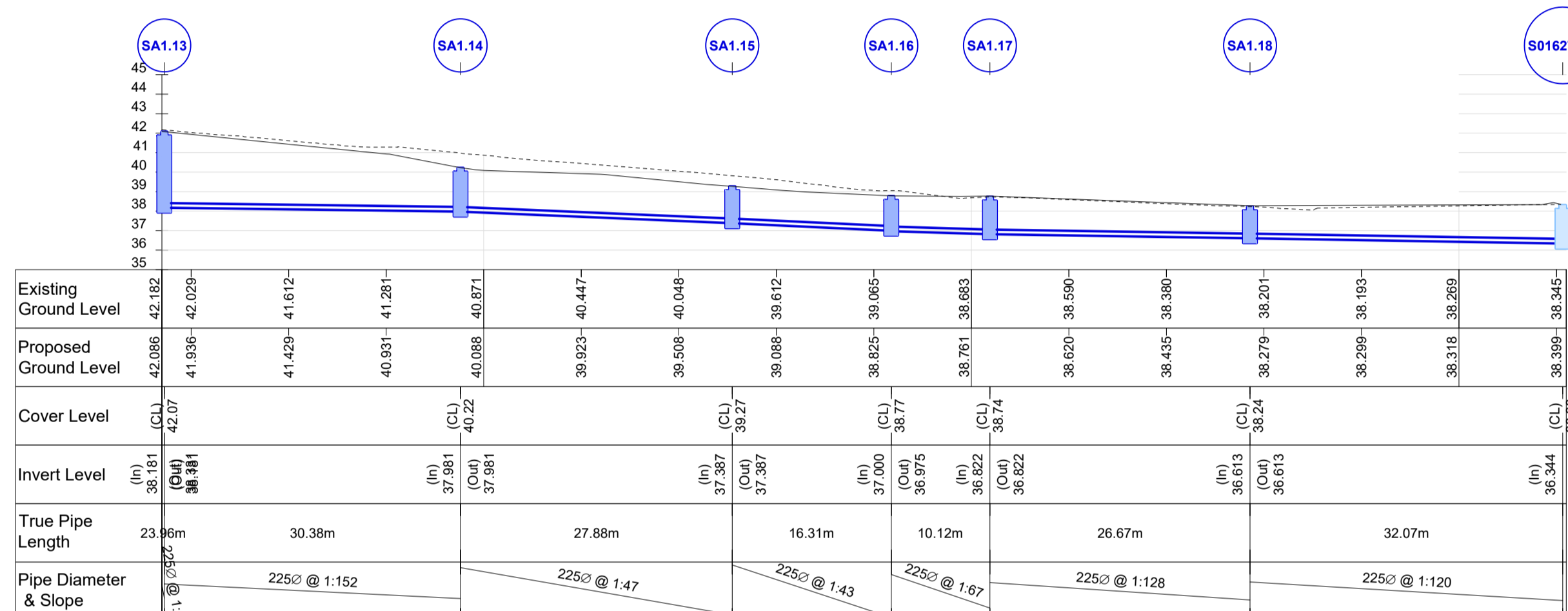


NOTES

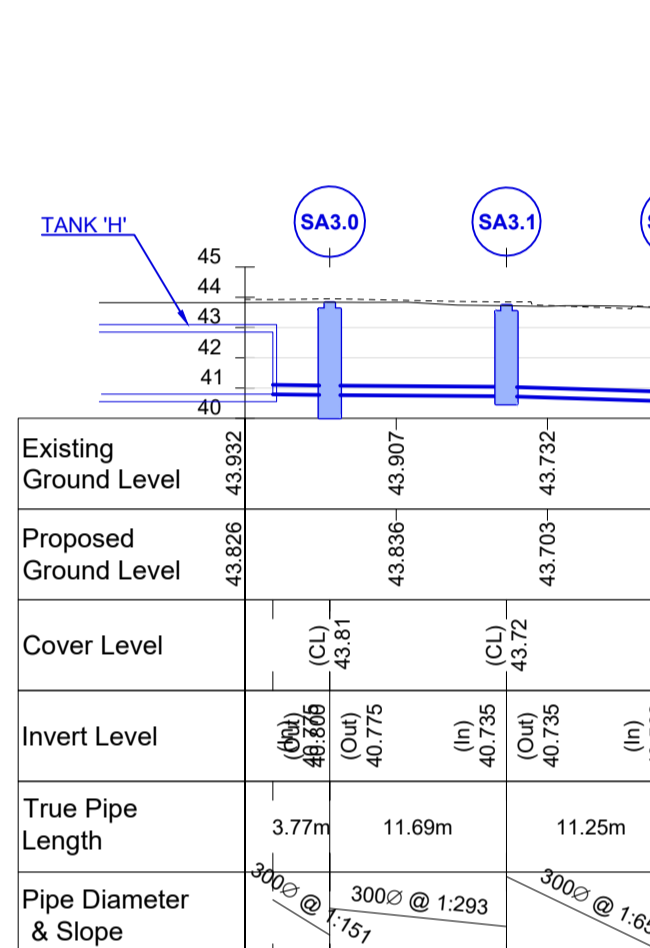
- THIS DRAWING IS TO BE READ IN CONJUNCTION WITH ALL ENGINEERS & ARCHITECTS DRAWINGS FIGURED DIMENSIONS ONLY (NOT SCALING) TO BE USED. WHERE A CONFLICT OF INFORMATION EXISTS OR IF IN ANY DOUBT - 'ASK'.
- CONSULTANTS TO BE INFORMED IMMEDIATELY OF ANY DISCREPANCIES BEFORE WORK PROCEEDS.



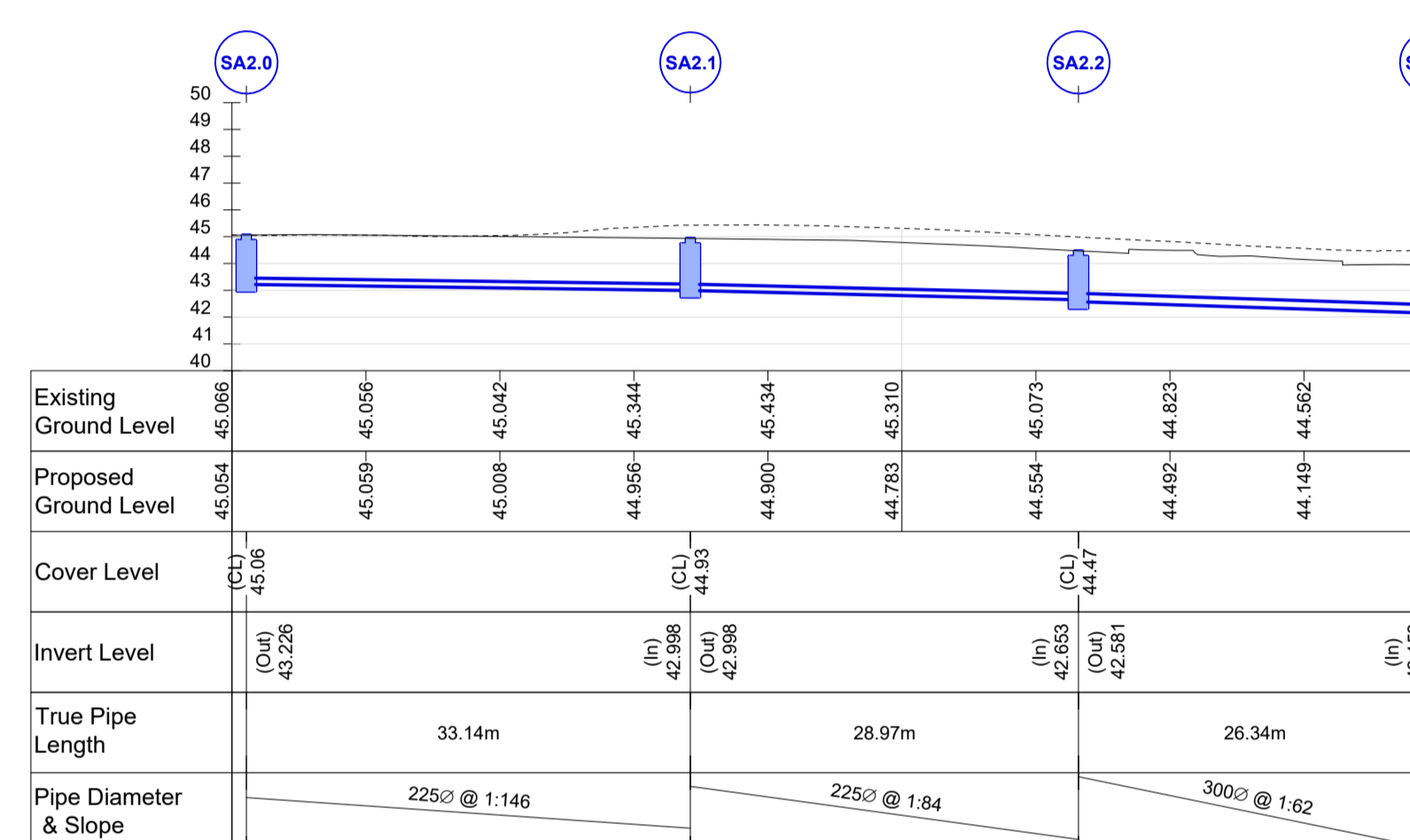
SECTION MH SA1.0 TO S01627219



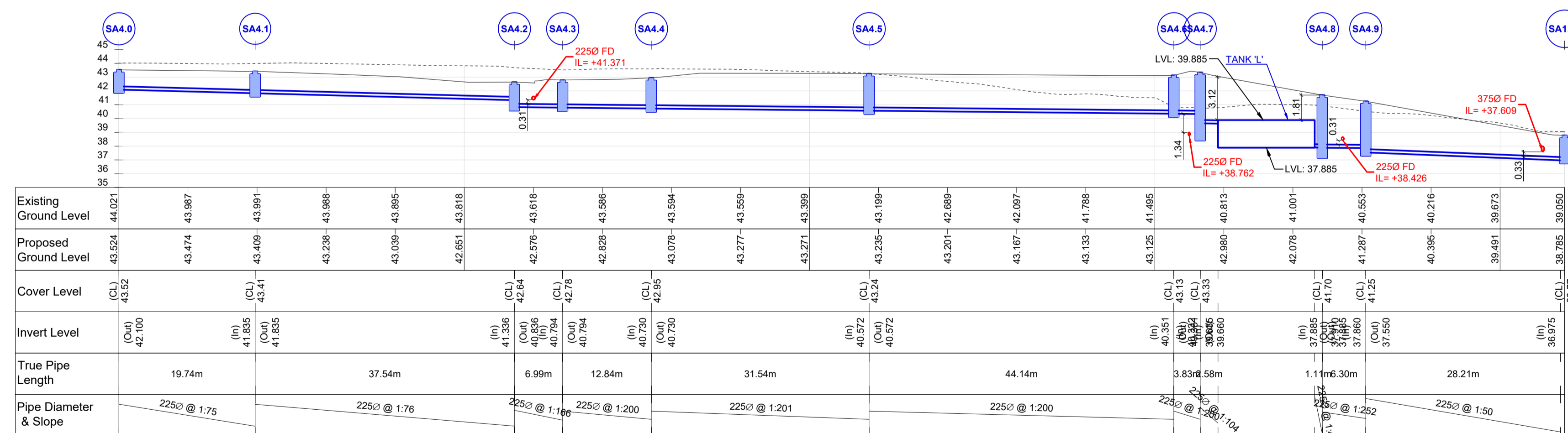
SECTION MH SA1.0 TO S01627219 (CONTINUED)



SECTION MH SA3.0 TO SA1.6



SECTION MH SA2.0 TO SA1.3



SECTION MH SA4.0 TO SA1.16

SURFACE WATER DRAINAGE LONGITUDINAL SECTIONS - SHEET 1 OF 2

SCALE @ A1: H=1:500; V=1:250
SCALE @ A3: H=1:1000; V=1:500

ISSUE	DATE	DESCRIPTION	BY
P5	05.09.24	ISSUED FOR PLANNING	WK
P4	01.08.24	SURFACE WATER AUDIT ISSUE	WK
P3	10.07.24	ISSUED TO LDA FOR COMMENT	WK
P2	17.06.24	ISSUED TO UIJSC EIREANN	WK
P1	06.06.24	ISSUED FOR COMMENT	WK

Project Engineer: Peter O'Dwyer Project Director: John Considine

BM STAGE

PLANNING

BM Dublin Office: Sandwith House, 52-54 Lower Sandwith Street, Dublin 2, Ireland. Tel: (01) 677 3200 Fax: (01) 677 3154
London Office: 5th Floor, Mill House, 8 Mill Street, London SE1 2BA, United Kingdom Tel: (0044) 20 3750 3530
Consulting Engineers, Civil, Structural, Project Management. E-mail: bmce@bmce.ie Web: www.bmce.ie

The Institution of Structural Engineers **ACEI** **ICE**

APPLICANT: **DÚN LAOGHAIRE-RATHDOWN COUNTY COUNCIL**

AGENT: **LAND DEVELOPMENT AGENCY**

PROJECT TITLE: **PROPOSED PART 10 RESIDENTIAL DEVELOPMENT, DUNDRUM CENTRAL DEVELOPMENT, DUNDRUM ROAD, DUBLIN 14.** BM PROJECT No: **20.170**

MODEL REFERENCE: **DCD-BMD-00-00-DR-C-DRAINAGE** SUITABILITY: REVISION:

DRAWING TITLE: **SURFACE WATER DRAINAGE LONGITUDINAL SECTIONS SHEET 1 OF 2**

DWG DRAWING REFERENCE: **DCD-BMD-00-00-DR-C-11115** STATUS: REVISION: **P5**