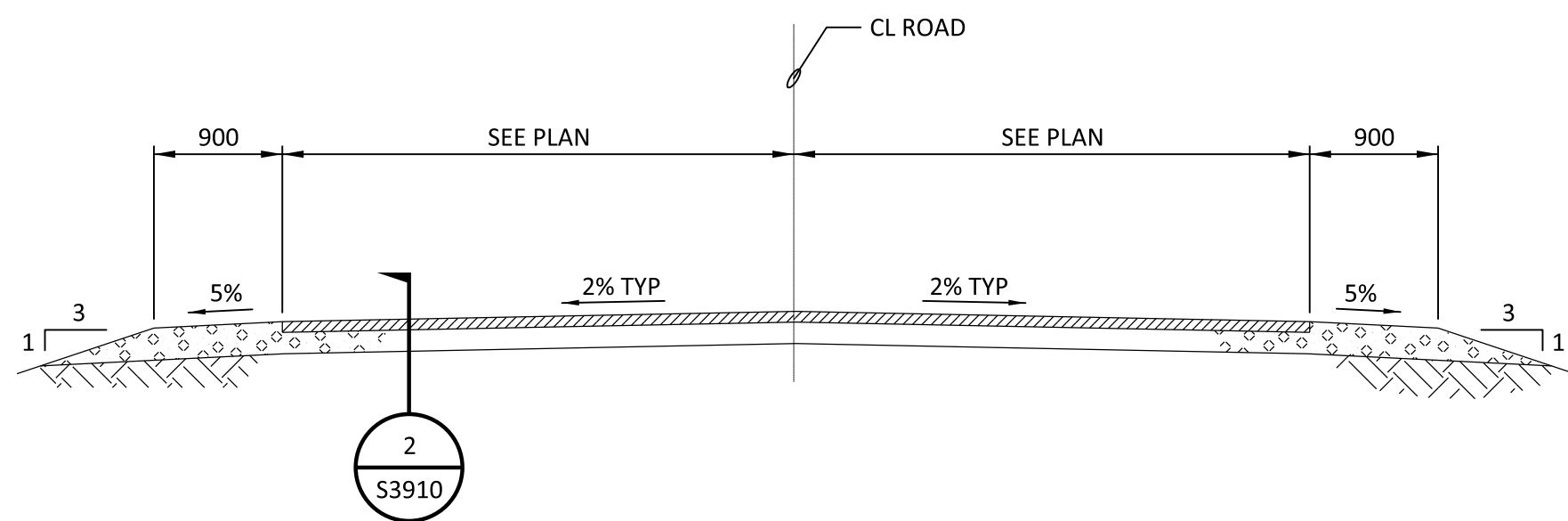
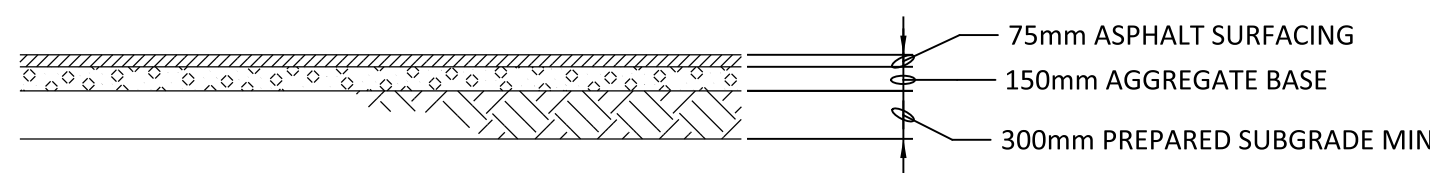


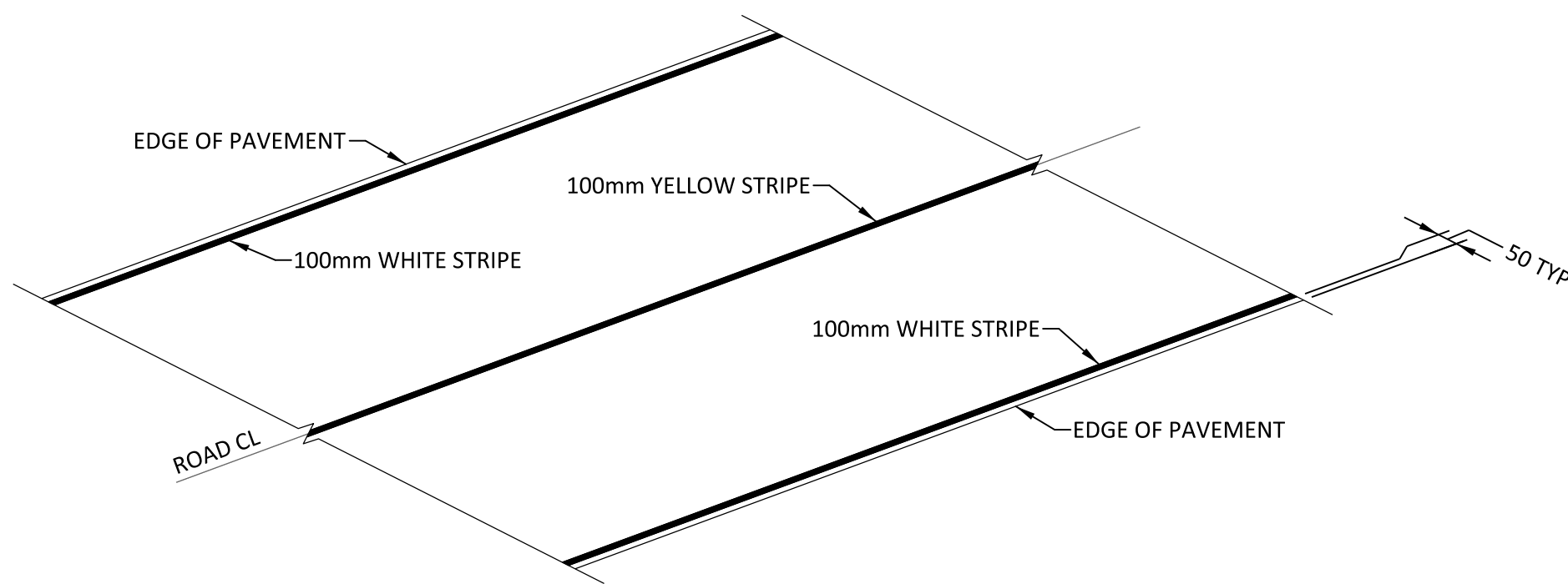
MicroStation v0.11.0.36  
07/26/2021 04:59 PM Full Size 1 = 1



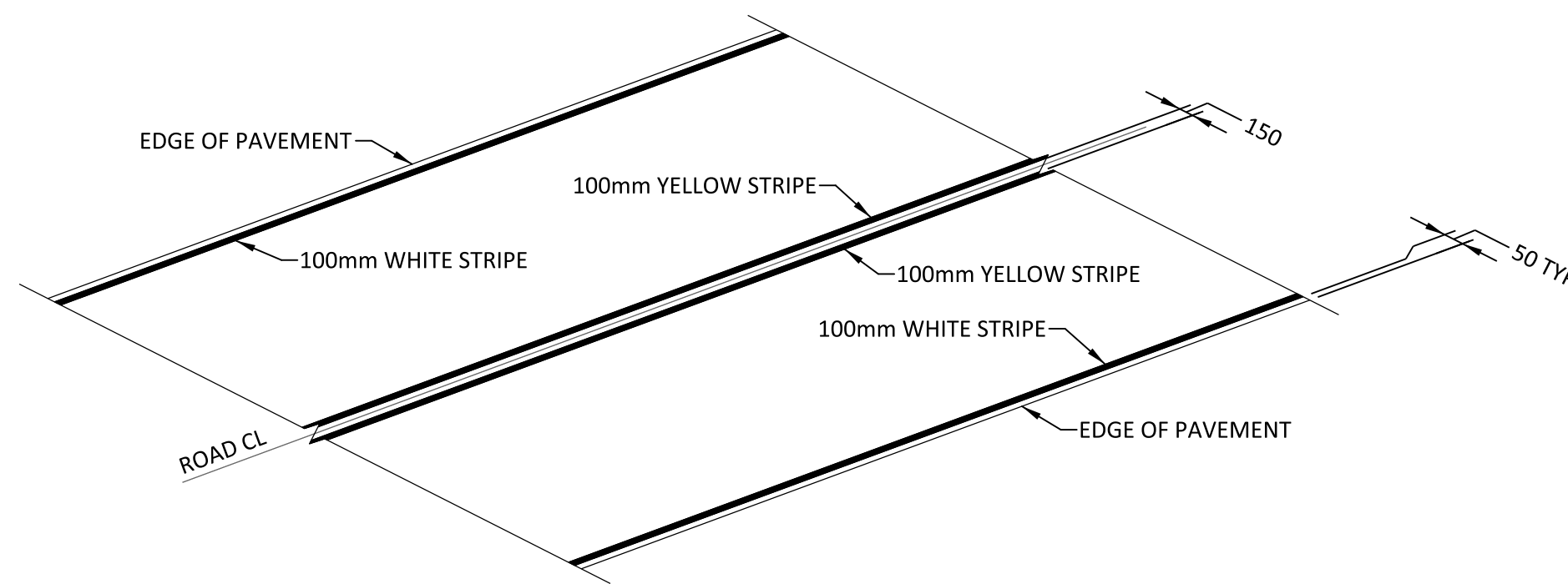
TYPICAL ASPHALT SURFACE ROAD SECTION  
NO SCALE



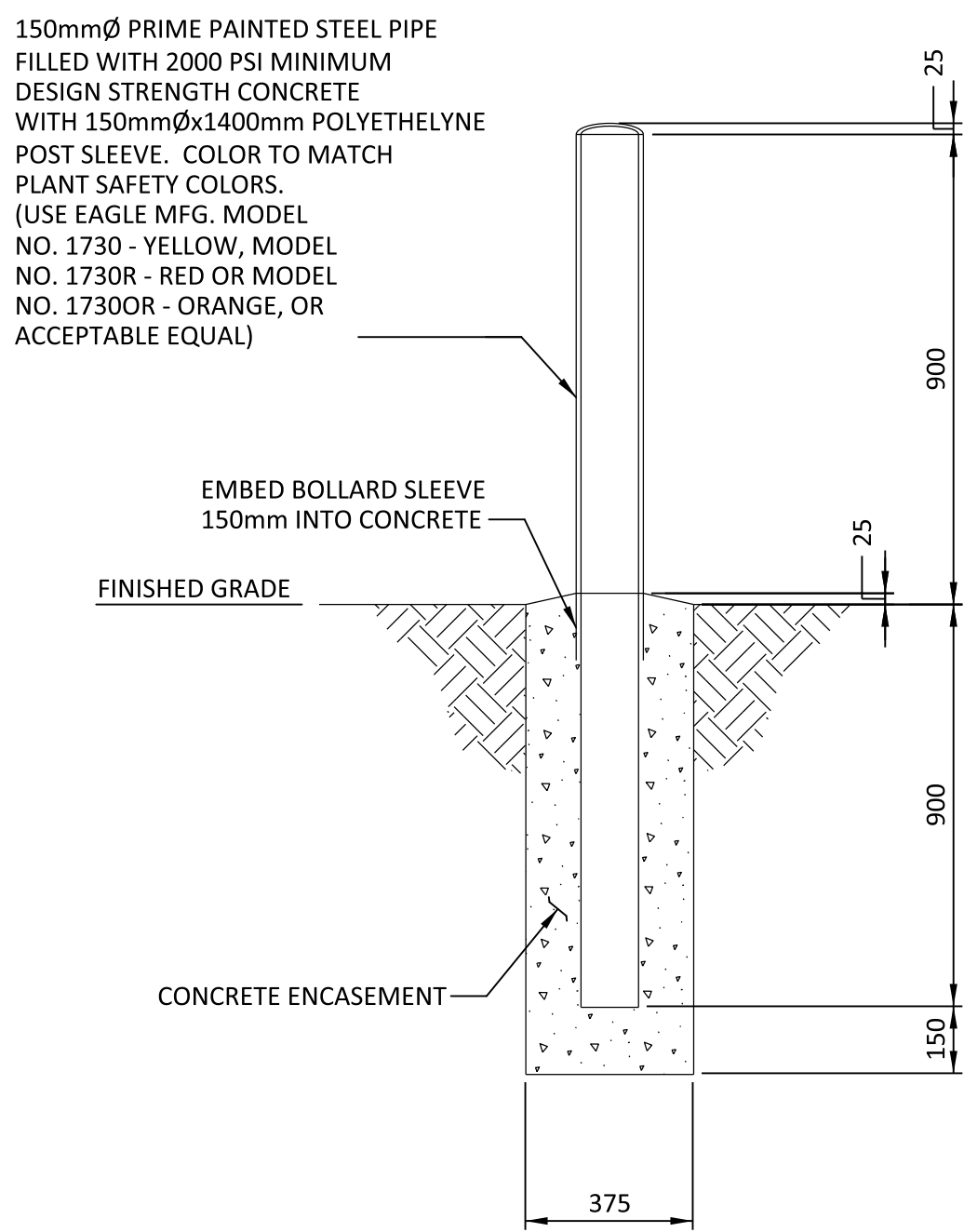
SECTION 2  
SEE THIS DWG  
NO SCALE



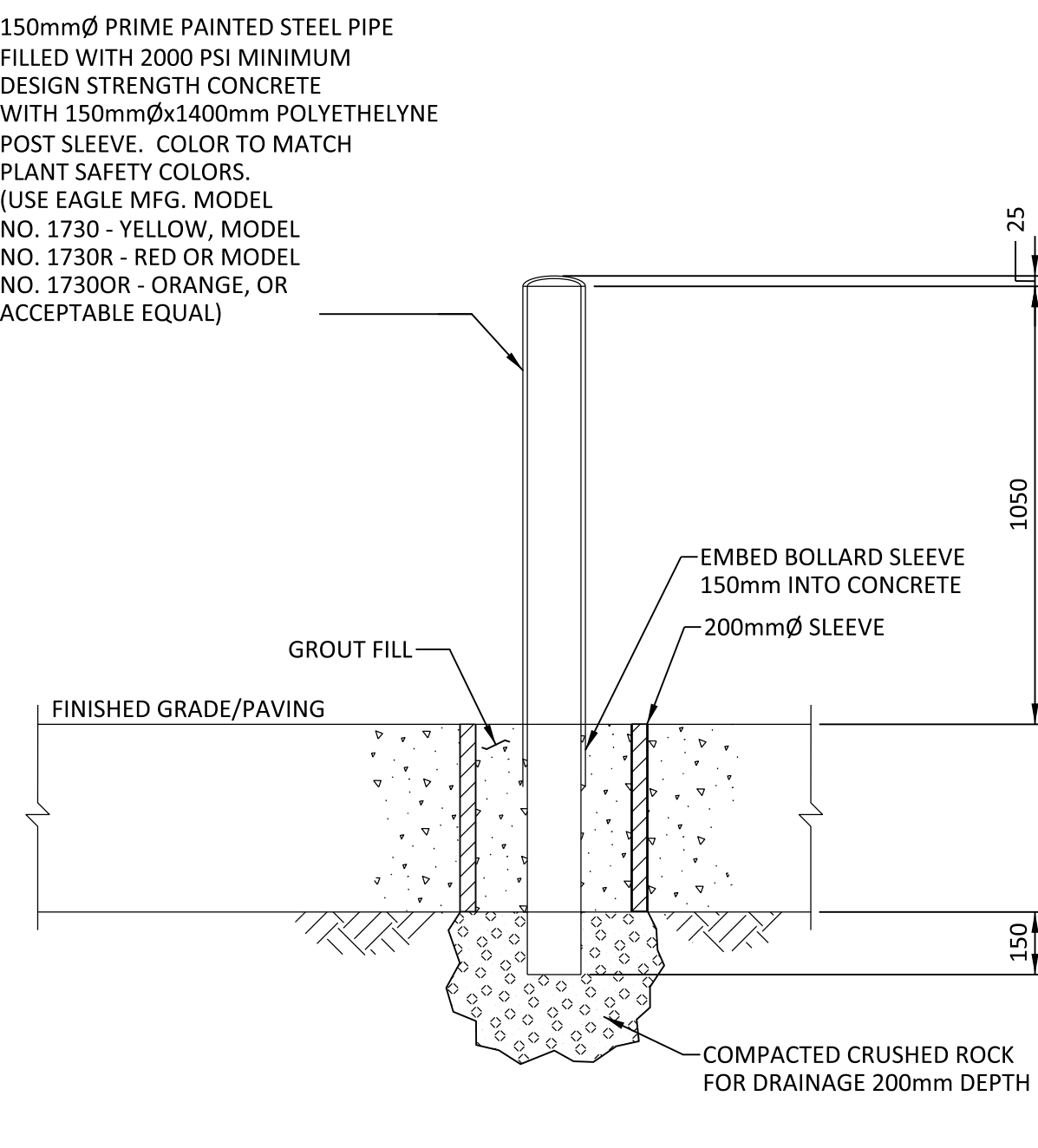
TYPICAL ROAD STRIPING DETAIL  
NO SCALE



TYPICAL ROAD STRIPING DETAIL (NO PASSING)  
NO SCALE

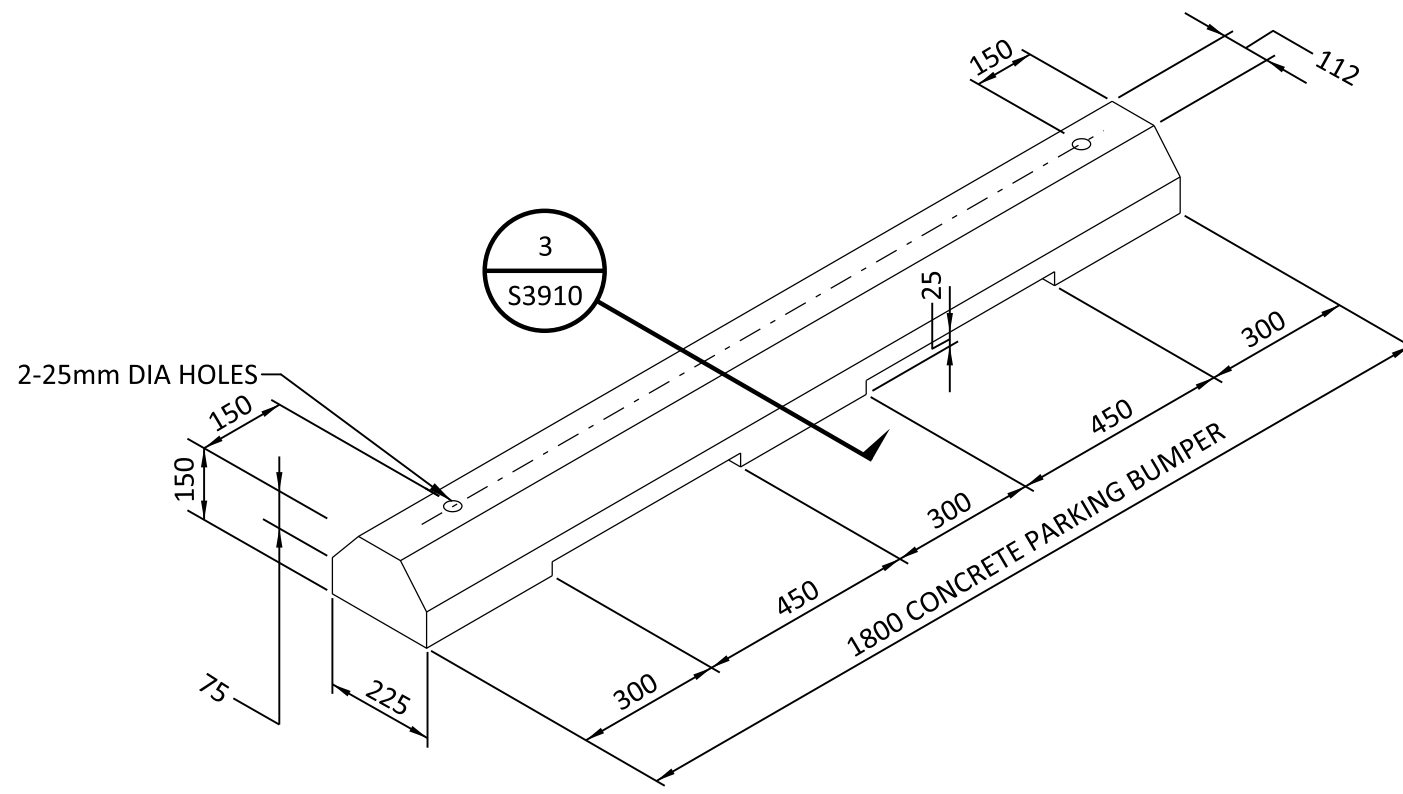


TYPICAL BOLLARD DETAIL  
NO SCALE



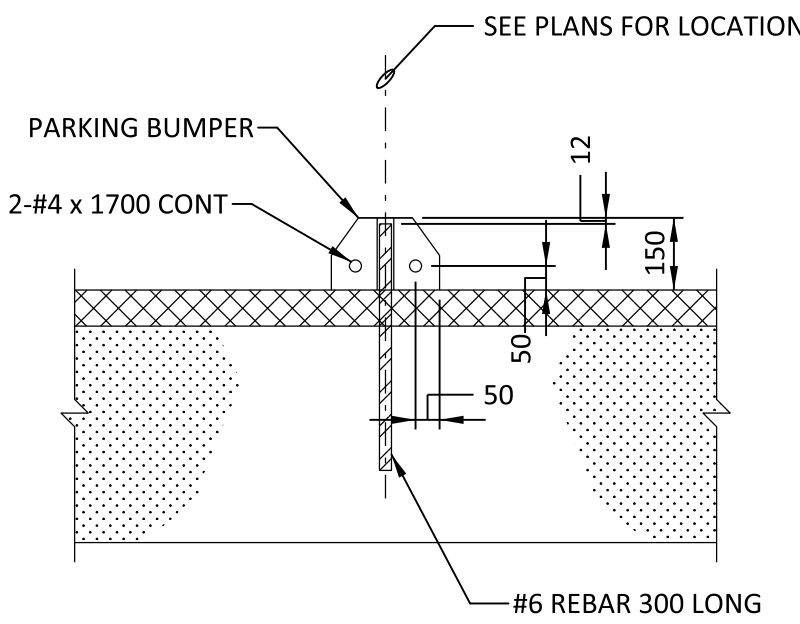
TYPICAL BOLLARD IN SLEEVE DETAIL  
NO SCALE

NOTE: MAXIMUM SPACING BETWEEN POSTS = 1200mm

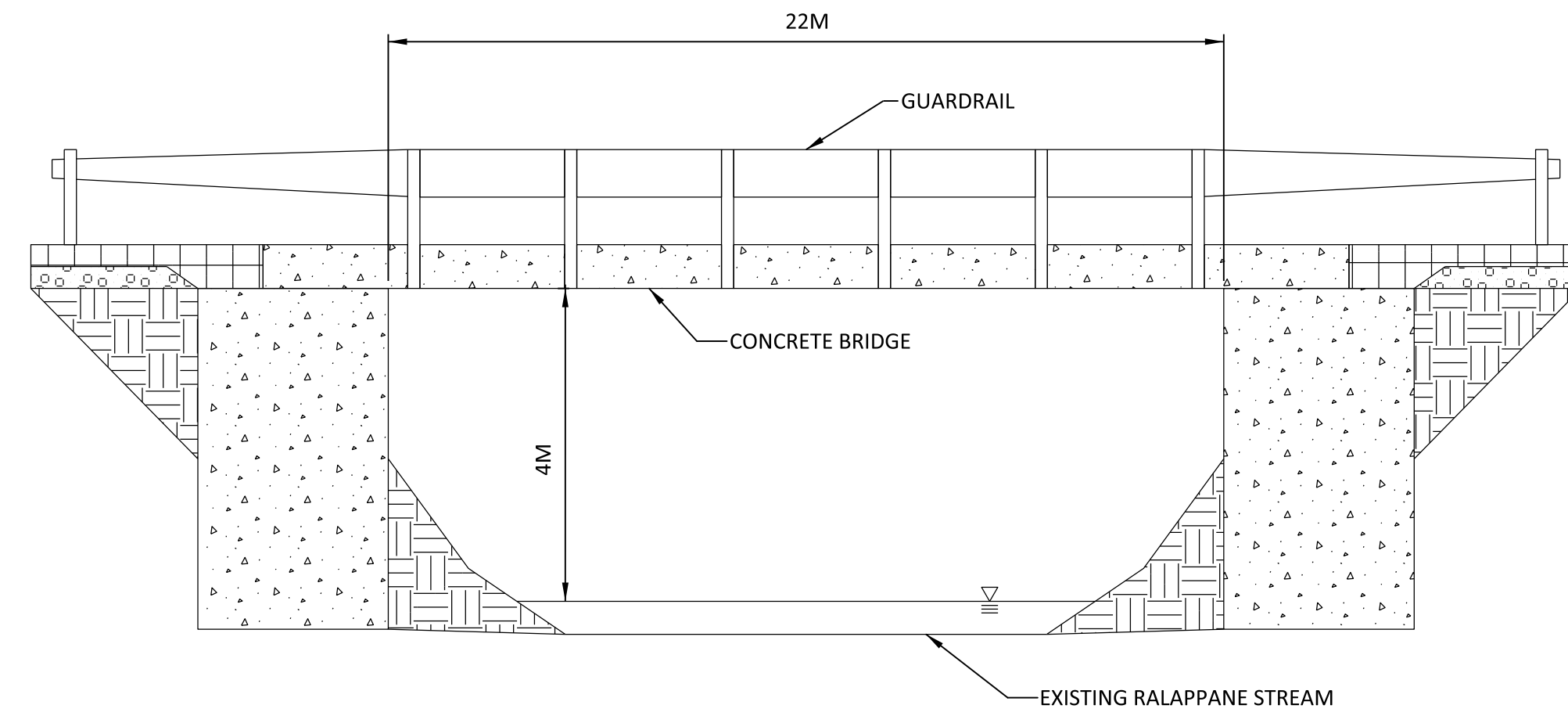


NOTE: CENTER PARKING BUMPER IN PARKING SPACE UNO.

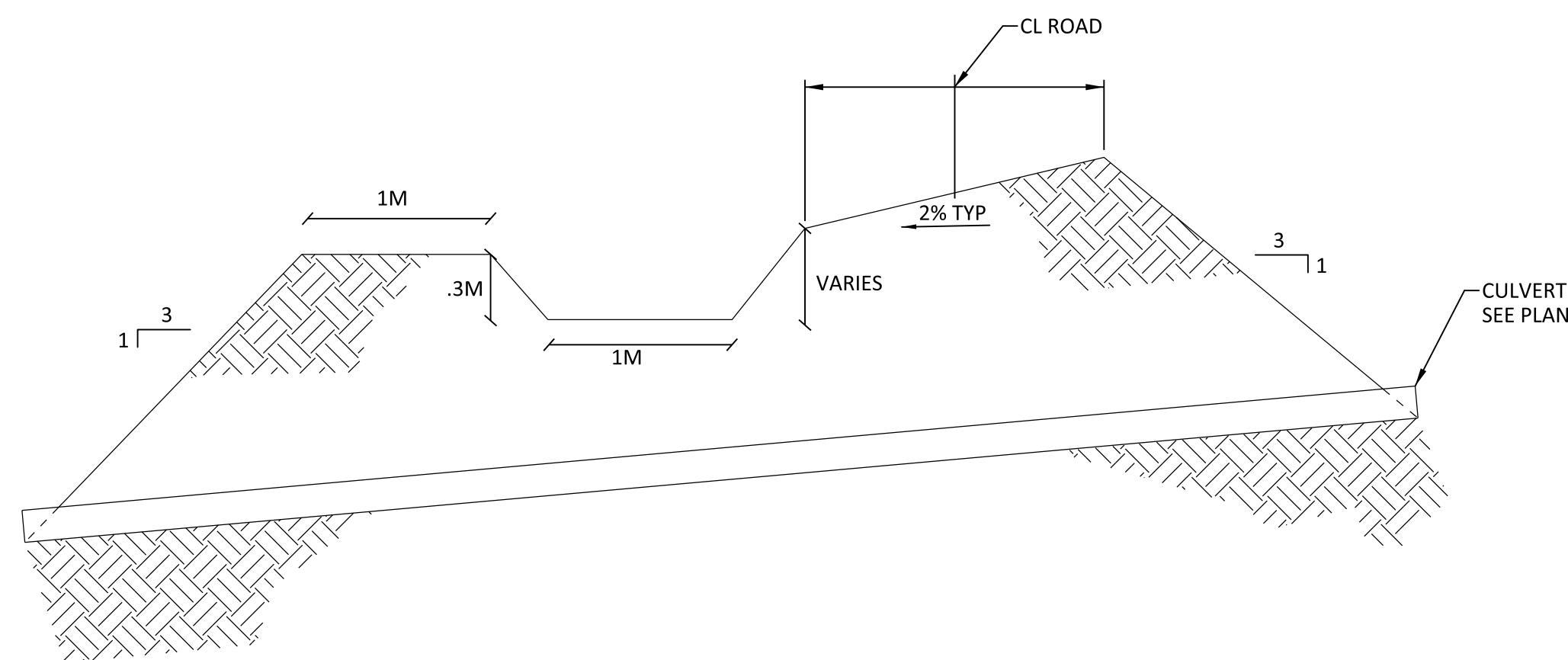
CONCRETE PARKING BUMPER DETAIL  
NO SCALE



SECTION 3  
SEE THIS DWG  
NO SCALE



PRECAST CONCRETE BRIDGE TYPICAL DETAIL  
NO SCALE



SECTION 1  
TYPICAL ROAD SECTION WITH CULVERT CROSSING  
NO SCALE

**NOT TO BE USED  
FOR CONSTRUCTION**

THE DISTRIBUTION AND USE OF THE NATIVE FORMAT CAD FILE OF THIS DRAWING IS UNCONTROLLED. THE USER SHALL VERIFY TRACEABILITY OF THIS DRAWING TO THE LATEST CONTROLLED VERSION.

BLACK & VEATCH CORP HEADQUARTERS:  
11401 LAMAR AVENUE, OVERLAND PARK,  
KANSAS, USA

**BLACK & VEATCH**

DESIGNER: JDA DRAWN: BJR  
CHECKED: DATE

SHANNON LNG LIMITED  
SHANNON TECHNOLOGY AND ENERGY PARK

ROADS AND PARKING - SITE  
TYPICAL ROADS AND PARKING DETAILS

PROJECT: 198291-1STA-S3910  
DRAWING NUMBER: 1

CODE: AREA:

1	18/JUN/2021	ISSUED FOR PLANNING	TAH	JDA	DAC
0	30/APR/2021	ISSUED FOR PLANNING	BJR	JDA	DAC
NO	DATE	REVISIONS AND RECORD OF ISSUE	DRN	DES	CHK