

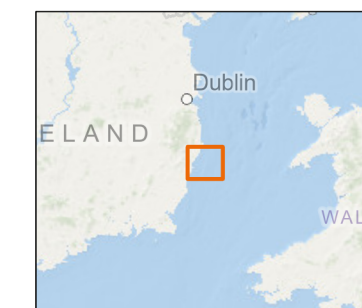
Arklow Bank Wind Park 2

Location of the Proposed Infrastructure used in the Coastal Process Models - 47 Turbine Layout Option*

Legend

- ABWP2 Array Area
- ABWP2 Cable Corridor and Working Area
- ABWP Inter-Array Cable
- ABWP2 Interconnector Cable
- ABWP2 Export Cable
- ABWP2 Offshore Wind Turbine Generator Locations for Modelling
- ABWP2 Offshore Substation Platform Locations for Modelling

*This figure is solely for the purpose of illustrating the location of the following proposed infrastructure used in the coastal processes models for each design option applied for: All offshore wind turbines and offshore substations including scour protection; All cables including scour and cable protection. This figure has been provided in response to RFI 1(g)



Notes
Esri, Intermap, NASA, NGA, USGS, OceanWise, Esri, GEBCO, Garmin, NaturalVue, Sources: Esri, TomTom, Garmin, FAO, NOAA, USGS, © OpenStreetMap contributors, and the GIS User Community. Contains Ordnance Survey data © Crown copyright and database rights (2022). OS OpenData.

Coordinate System:
ETRS 1989 UTM Zone 30N

0 2 4 km

0 1 2 nm

Scale	Date	Drawn By	Checked By	Approved By
1:112,640 @ A3	01/04/2026	GB	AK	LK

Suites B2 & C2
Higher Mill
Higher Mill Lane
Buckfastleigh
Devon
TQ11 0EN
www.gobeconsultants.com
+44 (0)1626 323890

GoBe
APEM Group