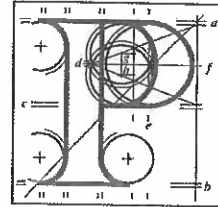


**Our Case Number:** ABP-313182-22  
**Planning Authority Reference Number:**



**An  
Bord  
Pleanála**

Adrienne Murphy  
18 Ayrfield Drive  
Ayrfield

D13E8R9

**Date:** 07 June 2022

**Re:** BusConnects Clongriffin to City Centre Core Bus Corridor Scheme  
County Dublin

Dear Sir / Madam,

An Bord Pleanála has received your observation or submission in relation to the case mentioned above and will take it into consideration in its determination of the matter. Please accept this letter as a receipt for the fee of €50 that you have paid.

Please be advised that copies of all submissions / observations received in relation to the application will be made available for public inspection at the offices of the Local Authority and at the offices of An Bord Pleanála when they have been processed by the Board.

For further information on this case please access our website at [www.pleanala.ie](http://www.pleanala.ie) and input the 6-digit case number into the search box. This number is shown on the top of this letter (for example: 303000).

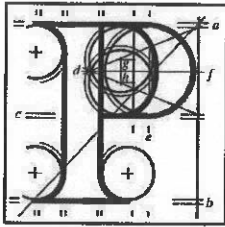
Yours faithfully,

Kevin McGettigan  
Administrative Assistant  
Direct Line: 01-8737263

BL50A

<b>Teil</b>	<b>Tel</b>	(01) 858 8100
<b>Glaio Áitiúil</b>	<b>LoCall</b>	1890 275 175
<b>Facs</b>	<b>Fax</b>	(01) 872 2684
<b>Láithreán Gréasáin</b>	<b>Website</b>	<a href="http://www.pleanala.ie">www.pleanala.ie</a>
<b>Ríomhphost</b>	<b>Email</b>	<a href="mailto:bord@pleanala.ie">bord@pleanala.ie</a>

64 Sráid Maoilbhríde	64 Marlborough Street
Baile Átha Cliath 1	Dublin 1
D01 V902	D01 V902



**An  
Bord  
Pleanála**

## SID Online Observation

**Online Reference: (SID-OBS-000061)**

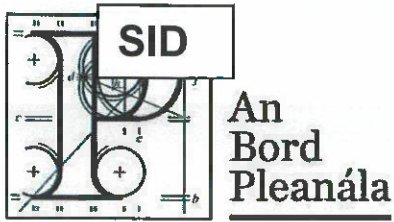
---

### Online Observation Details

<b>Contact Name:</b>	Adrienne Murphy
<b>Lodgement Date:</b>	31/05/2022 13:40:26
<b>Case Number / Description:</b>	313182

### Payment Details

<b>Payment Method:</b>	Online Payment
<b>Cardholder Name:</b>	Adrienne Murphy
<b>Payment Amount:</b>	€50.00



# Observation on a Strategic Infrastructure Development Application

## Observer's details

### 1. Observer's details (person making the observation)

If you are making the observation, write your full name and address.

If you are an agent completing the observation for someone else, write the observer's details:

(a) Observer's name

Adrienne Murphy

(b) Observer's postal address

18 Ayrfield Drive, Ayrfield, D13E8R9

## Agent's details

### 2. Agent's details (if applicable)

If you are an agent and are acting for someone else on this observation, please **also** write your details below.

If you are not using an agent, please write "Not applicable" below.

(a) Agent's name

Not Applicable

**(b)** Agent's postal address

Not Applicable

## Postal address for letters

3. During the process to decide the application, we will post information and items to you or to your agent. For this **current application**, who should we write to? (Please tick  one box only)

You (the observer) at the postal address in Part 1

The agent at the postal address in Part 2

## Details about the proposed development

4. Please provide details about the **current application** you wish to make an observation.

- (a) **An Bord Pleanála case number for the current application (if available)**  
(for example: 300000)

ABP 313182-22

- (b) **Name or description of proposed development**

Open space between 45 & 47 Ayrfield Drive

- (c) **Location of proposed development**

(for example: 1 Main Street, Baile Fearainn, Co Abhaile)

Open space between 45 & 47 Ayrfield Drive

## Observation details

### 5. Grounds

Please describe the grounds of your observation (planning reasons and arguments). You can type or write them in the space below. There is **no word limit** as the box expands to fit what you write.

You can also insert photographs or images in this box. (See part 6 – Supporting materials for more information).

Public health and safety:

- Child protection issues.
- Overall safety of the area.
- Creating a convenient, accessible area for anti-social behavior.
- Direct access to dual carriageway for children who are used to playing outdoors in a safe, secure residential area. The child safety implication here is huge for the area.
- Strong probability of change in our low crime area to an area of high crime as it is easier to abscond from Gardai on foot, electric scooter, or scrambler and Gardai won't be able to follow in garda vehicle.

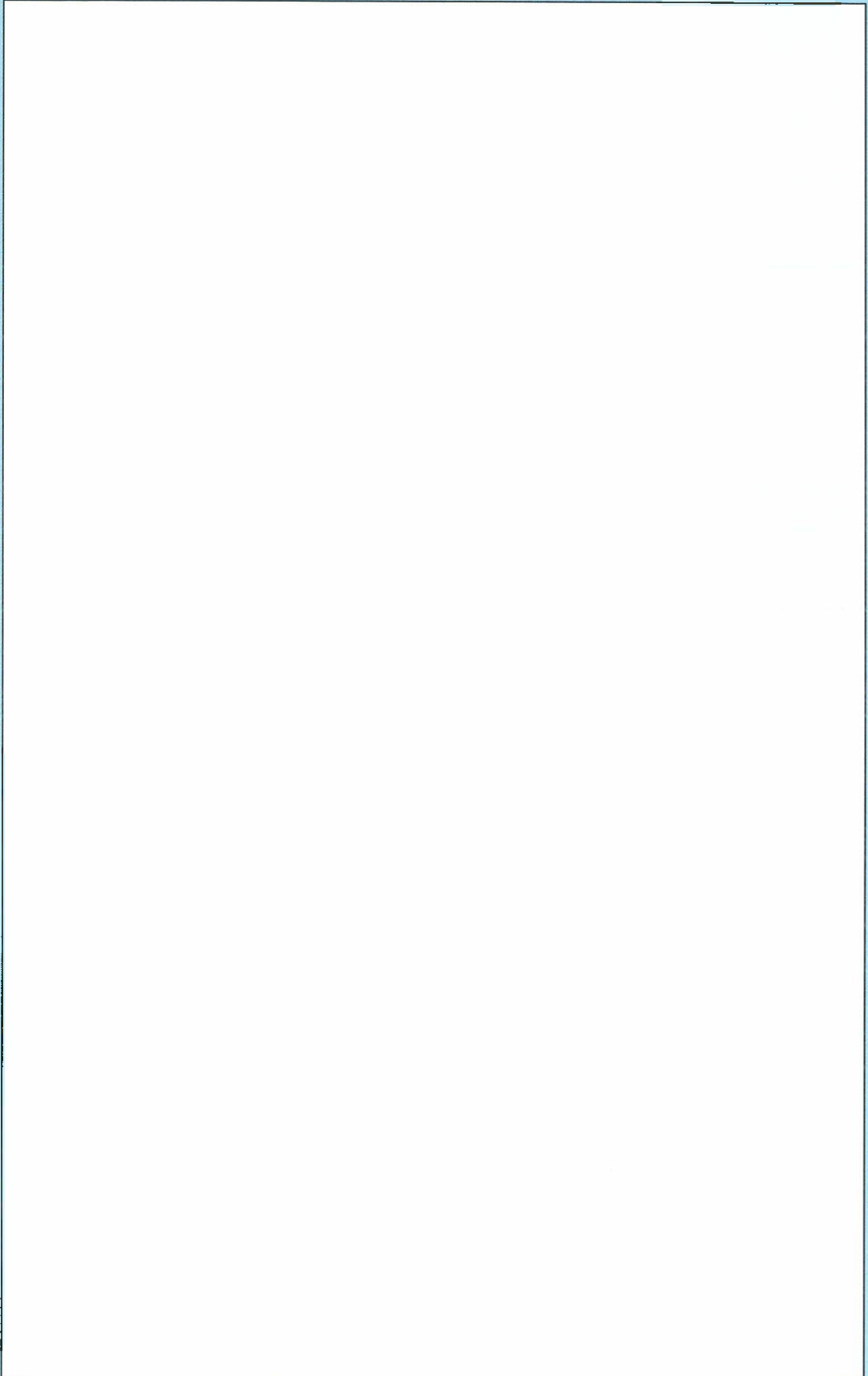
Impact on amenities and the community:

- Children losing a popular green space where they can currently play safely and securely.
- Unwanted direct access to dual carriageway.
- Noise pollution from a busy dual carriageway.
- Reduced parking capacity for residents of Ayrfield Drive.

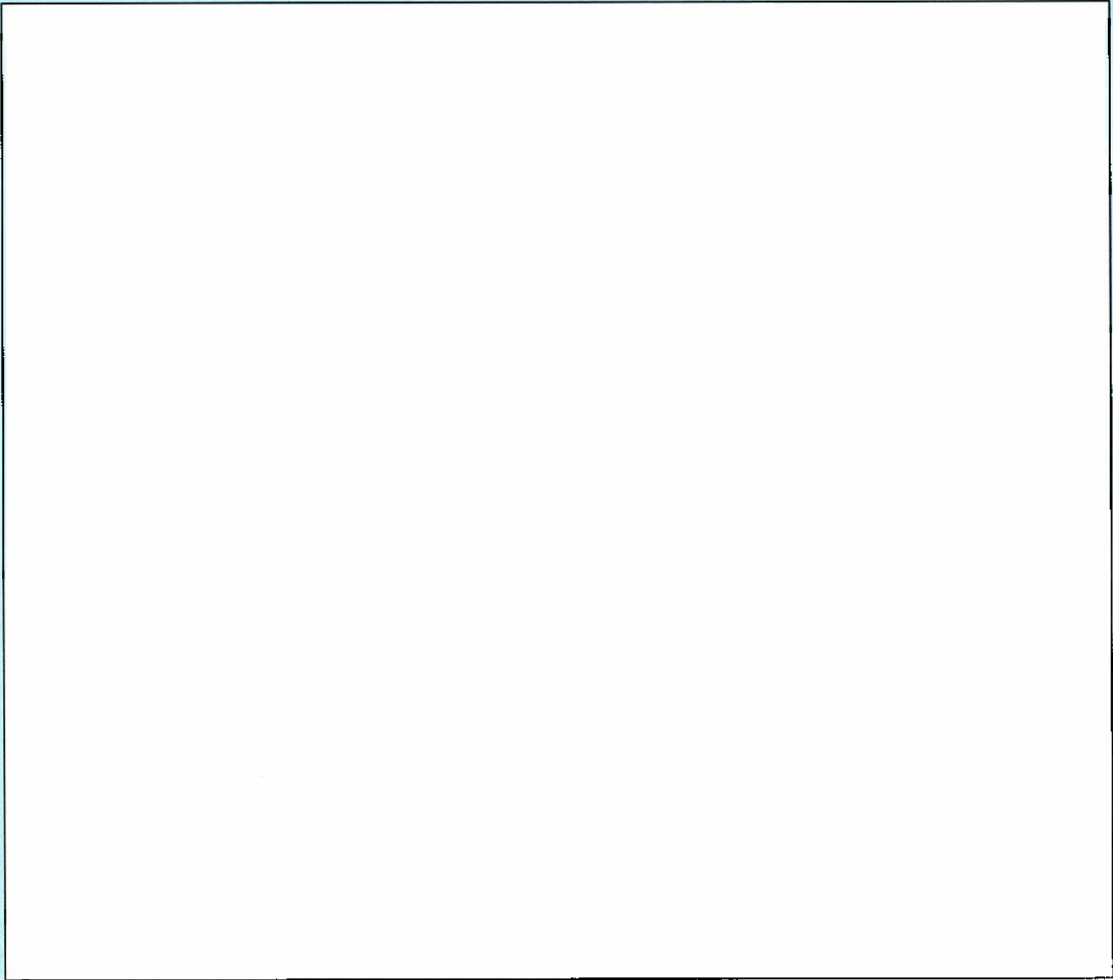
Traffic Hazards:

- Increased risk of road traffic accidents for our residents - large opening onto a dual carriageway.
- Increase in vehicle parking for people wanting to use the bus connect service (difficulty crossing the road, poor visibility).
- Increase in traffic volume in the estate (safety issues where children and residents are used to low volume)

**5. Grounds**



## 5. Grounds



## Supporting materials

6. If you wish, you can include supporting materials with your observation.

Supporting materials include:

- photographs,
- plans,
- surveys,
- drawings,
- digital videos or DVDs,
- technical guidance, or



- other supporting materials.

You can insert photographs and similar items in your observation details: grounds (part 5 of this form).

If your supporting materials are physical objects, you must send them together with your observation by post or deliver it in person to our office. You cannot use the online uploader facility.

## Fee

7. You **must** make sure that the correct fee is included with your observation.

### Observers (except prescribed bodies)

- strategic infrastructure observation is €50.
- there is no fee for an oral hearing request

## Oral hearing request

8. If you wish to **request the Board to hold an oral hearing**, please tick the “Yes, I wish to request an oral hearing” box below.

You can find information on how to make this request on [our website](#) or by contacting us.

If you do not wish to request an oral hearing, please tick the “No, I do not wish to request an oral hearing” box.

**Yes, I wish to request an oral hearing**

**No, I do not wish to request an oral hearing**

## Final steps before you send us your observations

9. If you are sending us your observation using the **online uploader facility**, remember to save this document as a Microsoft word or PDF and title it with:

- the case number and your name, or
- the name and location of the development and your name.

This also applies to prescribed bodies sending an observation by email.

If you are sending your observation to us by post or delivering in person, remember to print off all the pages of this document and send it to us.

---

### For Office Use Only

FEM – Received		SIDS – Processed	
Initials		Initials	
Date		Date	

### Notes