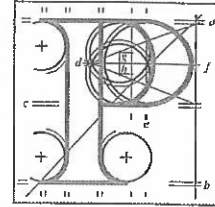


Our Case Number: ABP-313182-22



An
Bord
Pleanála

Niall Maher
65 Ayrfield Drive
Ayrfield
Dublin 13
D13C6H2

Date: 15 June 2022

Re: BusConnects Clongriffin to City Centre Core Bus Corridor Scheme
County Dublin

Dear Sir / Madam,

An Bord Pleanála has received your recent submission in relation to the above-mentioned proposed road development and will take it into consideration in its determination of the matter. A receipt for the fee lodged is enclosed.

Please note that the proposed road development shall not be carried out unless the Board has approved it or approved it with modifications.

The Board has also received an application for confirmation of a compulsory purchase order which relates to this proposed road development. The Board has discretion to hold an oral hearing in respect of any application before it. Accordingly, the Board will inform you in due course on this matter. The Board shall also make a decision on both applications at the same time.

If you have any queries in relation to this matter please contact the undersigned officer of the Board.

Please quote the above-mentioned An Bord Pleanála reference number in any correspondence or telephone contact with the Board.

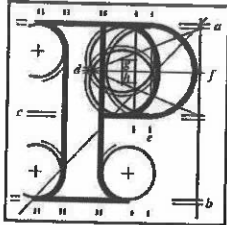
Yours faithfully,

Niamh Thornton
Executive Officer
Direct Line: 01-8737247

HA02A

Tel	Tel	(01) 858 8100
Glaó Áitiúil	LoCall	1890 275 175
Facs	Fax	(01) 872 2684
Láithreán Gréasáin	Website	www.pleanala.ie
Ríomhphost	Email	bord@pleanala.ie

64 Sráid Maoilbhríde	64 Marlborough Street
Baile Átha Cliath 1	Dublin 1
D01 V902	D01 V902



**An
Bord
Pleanála**

SID Online Observation

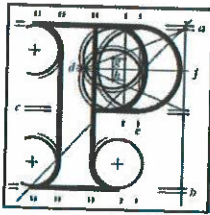
Online Reference: (SID-OBS-
000046)

Online Observation Details

Contact Name:	Niall Maher
Lodgement Date:	25/05/2022 19:36:59
Case Number / Description:	313182

Payment Details

Payment Method:	Online Payment
Cardholder Name:	Niall Maher
Payment Amount:	€50.00



An
Bord
Pleanála

Observation on a Strategic Infrastructure Development Application

Observer's details

1. Observer's details (person making the observation)

If you are making the observation, write your full name and address.

If you are an agent completing the observation for someone else, write the observer's details:

(a) Observer's name

Niall Maher

(b) Observer's postal address

65 Ayrfield Drive
Ayrfield
Dublin 13
D13C6H2

Agent's details

2. Agent's details (if applicable)

If you are an agent and are acting for someone else **on this observation**, please **also** write your details below.

If you are not using an agent, please write "Not applicable" below.

(a) Agent's name

Not applicable

(b) Agent's postal address

Click or tap here to enter text.

Observation on a Strategic
Infrastructure Development
Application

At
Bord
Éireann



Department of Transport, Tourism and Sport

Observation details

Observation details

Observation details

Postal address for letters

3. During the process to decide the application, we will post information and items to you or to your agent. For this **current application**, who should we write to? (Please tick ✓ one box only)

You (the observer) at the postal address in Part 1

The agent at the postal address in Part 2

Details about the proposed development

4. Please provide details about the **current application** you wish to make an observation.

- (a) **An Bord Pleanála case number for the current application (if available)**
(for example: 300000)

ABP 313182-22

- (b) **Name or description of proposed development**

Open space between 45 & 47 Ayrfield Drive, Dublin 13

- (c) **Location of proposed development**

(for example: 1 Main Street, Baile Fearainn, Co Abhaile)

Open space between 45 & 47 Ayrfield Drive, Dublin 13

Observation details

5. Grounds

Please describe the grounds of your observation (planning reasons and arguments). You can type or write them in the space below. There is **no word limit** as the box expands to fit what you write.

You can also insert photographs or images in this box. (See part 6 – Supporting materials for more information).

I wish to offer the following observations in relation to the proposed development of the green open space between 45 & 47 Ayrfield Drive, Dublin 13.

Impact on amenities and the local community:

- Loss of a valuable safe open green space enjoyed by the young children of the neighbourhood for decades.
- Unwanted and unnecessary direct egress to a busy dual carriageway directly from a quite family friendly cul de sac.
- The current wall dividing Ayrfield Drive from this major arterial route offers some level of protection against severe noise pollution and the proposal would severely impact this quiet neighbourhood.

Traffic Hazards

- A large opening directly onto a major arterial route from a heretofore quiet cul de sac brings unnecessary risks of potential accidents for our young children who have not been exposed to such levels of high volume traffic.
- This proposal would inevitably lead to a huge increase in the volume of traffic in and around Ayrfield Drive by those wishing to use it as a park and ride facility in order to access the proposed bus corridor. Ayrfield Drive and the neighbouring roads are totally unsuitable for such an inevitable outcome.
- The safety of our young children in the neighbourhood should quite rightly be the top priority of all concerned and this proposal clearly compromises that safety.

5. Grounds

Public health and safety

-As it stands Ayrfield Estate has only one access/egress point. This unwanted proposal would inevitably lead to an increase in anti-social and potentially criminal activity given that the Gardai would be unable to pursue suspects via this unwanted and unnecessary proposal.

-To date Ayrfield Drive and the general Ayrfield estate has very low levels of crime and child protection issues have not arisen. This proposal has the potential to undermine the safety of our children given the easy access it would provide for the ne'er do wells.

-The right of children to play in a safe secure environment has to trump this unnecessary and unwanted proposal.

Conclusion

-Access to public transport has never been an issue for the people of Ayrfield, as it stands, such access is currently only a short walk away.

-This unwanted proposal will undermine the safety and security of this area for the children, the wider residents and brings no tangible benefits but creates difficulties which currently don't exist.

I hope these brief observations will assist with your decision making.

Supporting materials

6. If you wish, you can include supporting materials with your observation.

Supporting materials include:

- photographs,
- plans,
- surveys,
- drawings,
- digital videos or DVDs,
- technical guidance, or
- other supporting materials.

You can insert photographs and similar items in your observation details: grounds (part 5 of this form).

If your supporting materials are physical objects, you must send them together with your observation by post or deliver it in person to our office.

You cannot use the online uploader facility.

Fee

7. You **must** make sure that the correct fee is included with your observation.

Observers (except prescribed bodies)

- strategic infrastructure observation is €50.
- there is no fee for an oral hearing request

Oral hearing request

8. If you wish to request the Board to hold an oral hearing, please tick the "Yes, I wish to request an oral hearing" box below.

You can find information on how to make this request on [our website](#) or by contacting us.

If you do not wish to request an oral hearing, please tick the "No, I do not wish to request an oral hearing" box.

Yes, I wish to request an oral hearing

No, I do not wish to request an oral hearing

Final steps before you send us your observations

9. If you are sending us your observation using **the online uploader facility**, remember to save this document as a Microsoft word or PDF and title it with:

- the case number and your name, or
- the name and location of the development and your name.

This also applies to prescribed bodies sending an observation by email.

If you are sending your observation to us by post or delivering in person, remember to print off all the pages of this document and send it to us.

For Office Use Only

FEM – Received		SIDS – Processed	
Initials		Initials	
Date		Date	

Notes