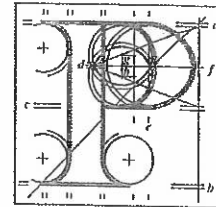


Our Case Number: ABP-313182-22

Planning Authority Reference Number:



An  
Bord  
Pleanála

Patrick Carey and Others  
25 Ayrfield Park  
Ayrfield  
Dublin 13

Date: 14 June 2022

Re: BusConnects Clongriffin to City Centre Core Bus Corridor Scheme  
County Dublin

Dear Sir / Madam,

An Bord Pleanála has received your observation or submission in relation to the case mentioned above and will take it into consideration in its determination of the matter. Please accept this letter as a receipt for the fee of €50 that you have paid.

Please be advised that copies of all submissions / observations received in relation to the application will be made available for public inspection at the offices of the Local Authority and at the offices of An Bord Pleanála when they have been processed by the Board.

For further information on this case please access our website at [www.pleanala.ie](http://www.pleanala.ie) and input the 6-digit case number into the search box. This number is shown on the top of this letter (for example: 303000).

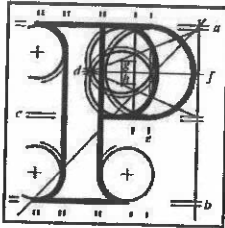
Yours faithfully,

Kevin McGettigan  
Administrative Assistant  
Direct Line: 01-8737263

BL50A

Tel	Tel	(01) 858 8100
Glaao Áitiúil	LoCall	1890 275 175
Facs	Fax	(01) 872 2684
Láithreán Gréasáin	Website	<a href="http://www.pleanala.ie">www.pleanala.ie</a>
Riomhphost	Email	<a href="mailto:bord@pleanala.ie">bord@pleanala.ie</a>

64 Sráid Maoilbhríde	64 Marlborough Street
Baile Átha Cliath 1	Dublin 1
D01 V902	D01 V902



**An  
Bord  
Pleanála**

## SID Online Observation

Online Reference: (SID-OBS-  
000053)

### Online Observation Details

<b>Contact Name:</b>	Patrick carey
<b>Lodgement Date:</b>	30/05/2022 16:31:57
<b>Case Number / Description:</b>	313182

### Payment Details

<b>Payment Method:</b>	Online Payment
<b>Cardholder Name:</b>	Patrick carey
<b>Payment Amount:</b>	€50.00

Observations on:

An Bord Pleanála Case number - ABP-313182-22. Open Space between 45 & 47 Ayrfield Drive.

Opening this space brings up several issues:

**Public health and safety:**

This proposal will open health and safety issues such as:

**(1) Child Safety.** Ayrfield is a quiet road filled with numerous amounts of young children, the children use this open space daily and opening it up to direct access to a dual carriage would endanger children who are not used to playing beside a dual carriageway.

**(2) Overall safety of the area and increase in anti-social behaviour.**

Opening the space gives people a space to loiter, litter and increase anti-social behaviour.

**(3) Increase in crime**

-Strong probability of change in our low crime area to an area of high crime as it is easier to abscond from Garda

**Impact on amenities and the community:**

**(1) Children losing a popular green space.**

This space is currently used daily by children of all ages to run, play, and play sports and games. It is used as a garden to grow flowers to teach the children the importance of looking after your area and the environment. It's used for party's and get togethers for the children.

Simply put this plan takes all that away.

**Traffic Hazards:**

**(1) Increased risk of road traffic accidents for our residents - large opening onto a dual carriageway**

(2) Increase in non-resident vehicle parking for people wanting to use the bus connect service.

---

(3) Increase in traffic volume in the

Thank you for your considerations of these observations:

Thanks

Residents of 25 Ayrfield Park:

Patrick Carey

Ann Carey

Shauna Carey