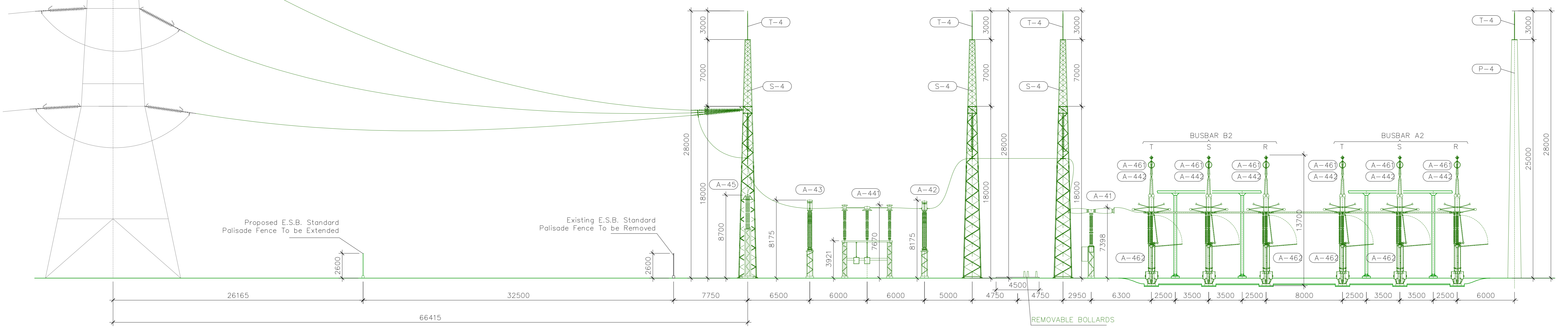
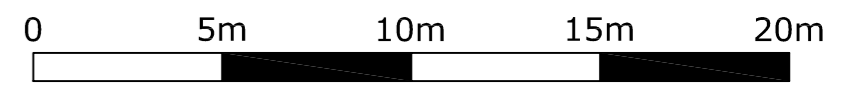


Section A-A

EQUIPMENT SCHEDULE		
POSITION	QUANT.	DENOMINATION
(A-41)	1	CIRCUIT BREAKER SF6 420 kV
(A-42)	3	CURRENT TRANSFORMER 420 kV
(A-43)	3	INDUCTIVE VOLTAGE TRANSFORMER 420 kV
(A-44)	3	THREE POLE DISCONNECTOR WITH EARTH CONNECTION 420 kV
(A-442)	6	PANTOGRAPH DISCONNECTING SWITCH 420 kV (With earthing switch)
(A-45)	3	SURGE ARRESTER 420 kV, RATED VOLTAGE 312 kV (rnc)
(A-46)	6	SUPPORT INSULATOR (BARS)
(A-462)	5	SUPPORT INSULATOR
(P-4)	1	LIGHTNING MONOPOLE
(S-4)	3	GANTRY
(T-4)	7	FRANKLIN TIP



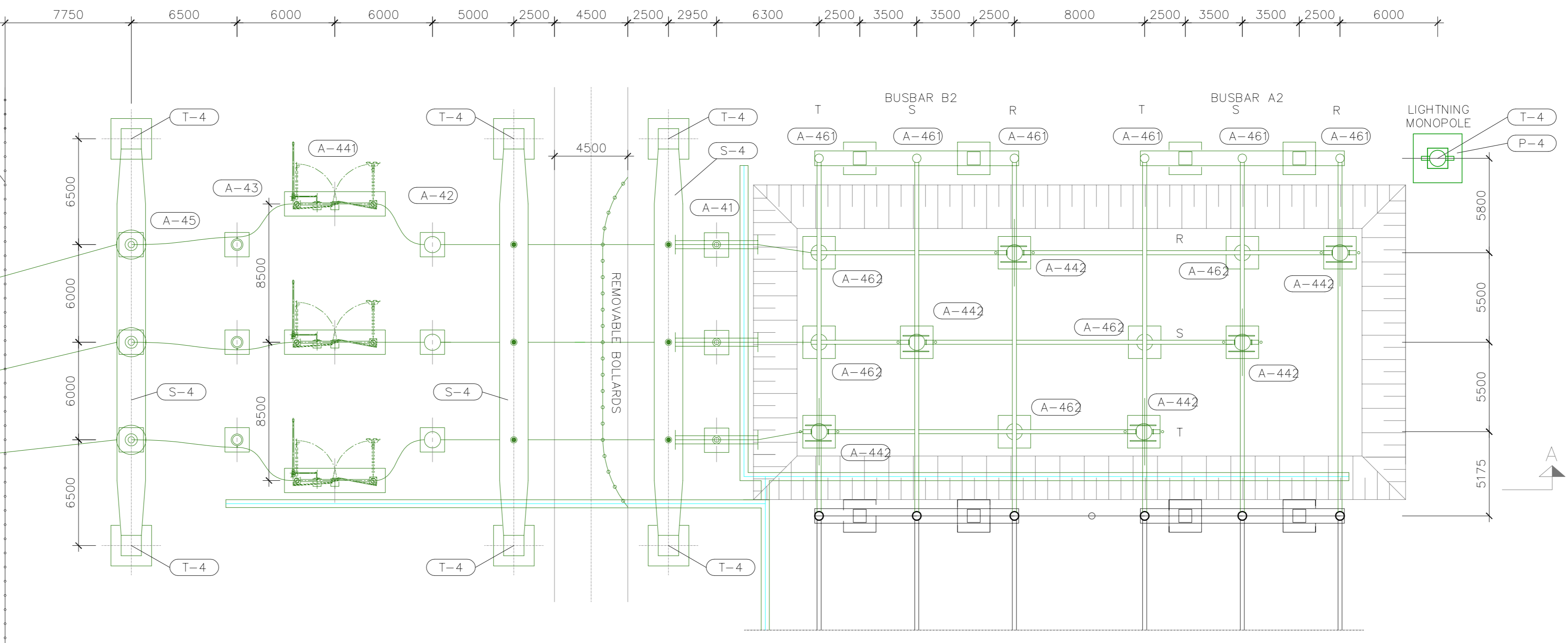
DRAFT



- NOTES:
- FIGURED DIMENSIONS ONLY TO BE TAKEN FROM THIS DRAWING.
 - ALL LEVELS SHOWN RELATE TO ORDNANCE SURVEY DATUM AT MALIN HEAD

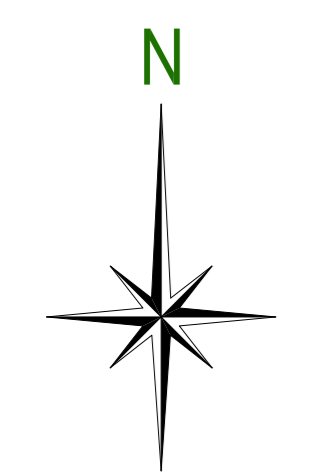
Proposed E.S.B. Standard Palisade Fence To be Extended

Existing E.S.B. Standard Palisade Fence To be Removed



Note:
For Location of Woodland Substation please refer to Drg. No: MT-006-001 & MT-006-002.

Layout



TURLEENAN

Existing Tower 410

- Legend:
- Existing Equipment
 - Proposed Equipment



Rev	Date	Description	By	Chkd.
A	Jan '14	PLANNING ISSUE	MN	DG

Client:

Project: NORTH - SOUTH 400 kV INTERCONNECTION DEVELOPMENT

Title: MEATH STUDY AREA (MSA) WOODLAND 400 kV SUBSTATION PLAN & SECTIONS

Scale @ A0: 1:200
 Prepared by: M. Nolan
 Checked: D. Grehan
 Date: January 2014
 Project Director: D. Grehan
 Planning Dwg. Ref: MT-006-004

TOBIN Consulting Engineers
 Block 10-4, Blanchardstown Corporate Park,
 Dublin 15, Ireland.
 tel: +353-(0)1-8030406
 fax: +353-(0)1-8030409
 e-mail: dublin@tobin.ie
 www.tobin.ie

Drawing No.: 6244-2055
 Revision: A