

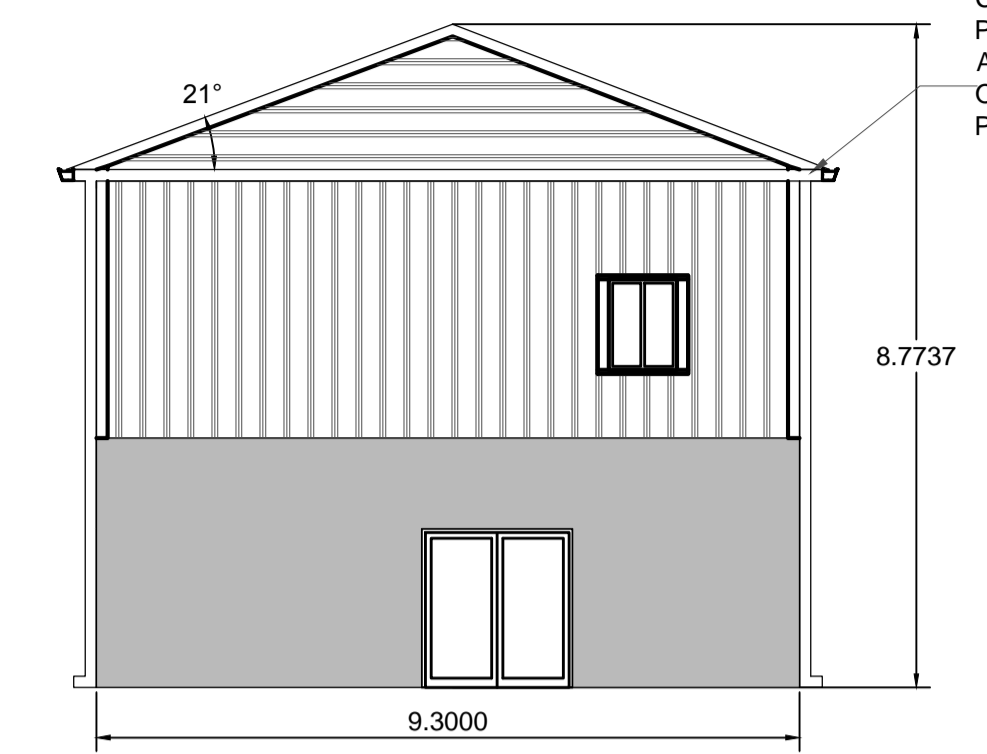


NORTH ELEVATION

ROOF FINISH: GALVANISED METAL KS1000RW TRAPEZOIDAL PANELS OR SIMILAR APPROVED

FIRST FLOOR EXTERIOR FINISH: GALVANISED METAL KS1000RW TRAPEZOIDAL WALL PANELS OR SIMILAR APPROVED

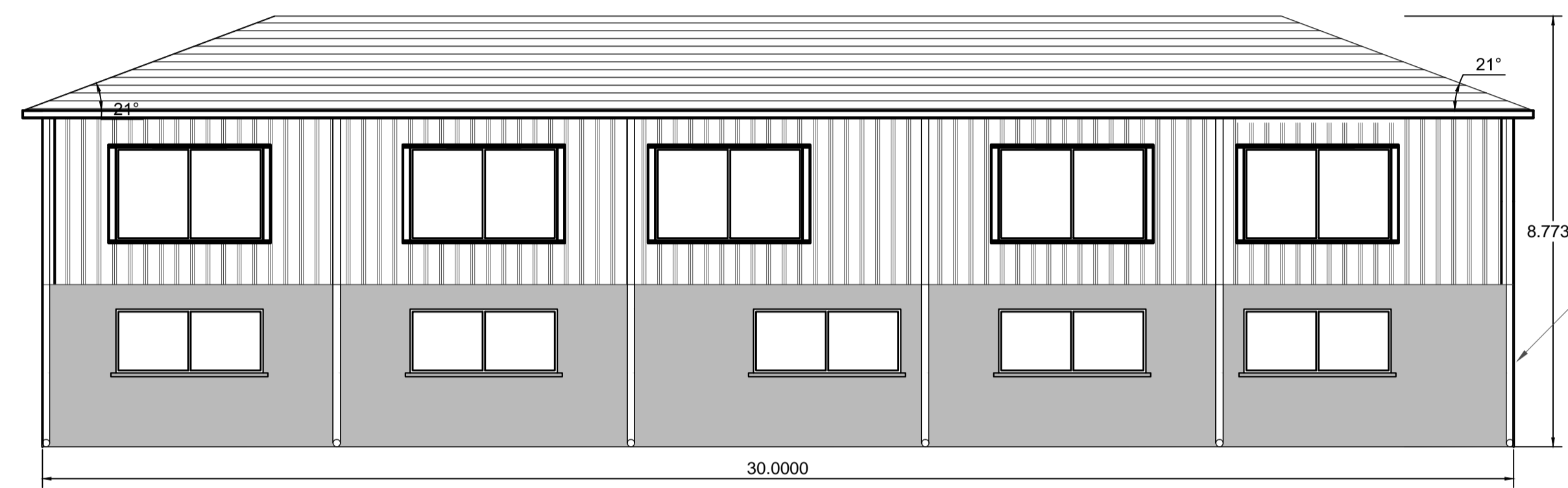
GROUND FLOOR EXTERIOR FINISH: OUTER LEAF CONCRETE BLOCKWORK WITH RENDERED FINISH



WEST ELEVATION

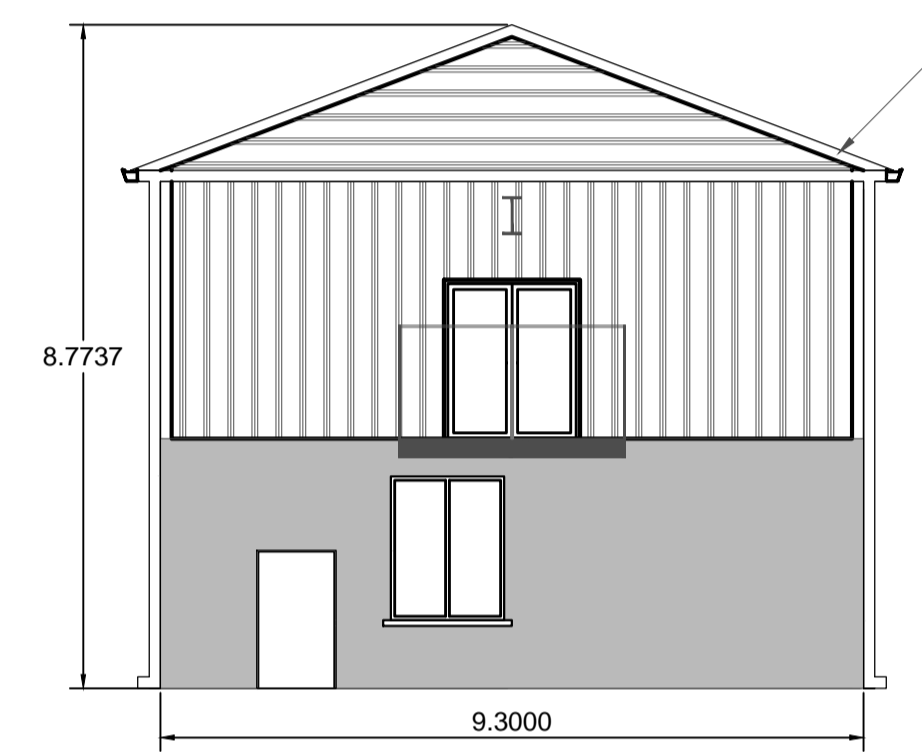
GUTTER: ALUTEC EXTRUDED ALUMINIUM COMMERCIAL SIZE (GIANT) TRAPEZOIDAL PROFILE GUTTER WITH EXTERNAL UNIONS AND CONCEALED SUPPORTS. CAPACITY OF 10 L/S. ELECTROSTATIC POLYESTER POWDER COATED TO BS6496:1984.

FASCIA: 'TRIM FIX' PRESSED ALUMINIUM FASCIA OR SIMILAR APPROVED. POLYESTER POWDER COATED TO OUTSIDE SURFACES IN ACCORDANCE WITH BS6496



SOUTH ELEVATION

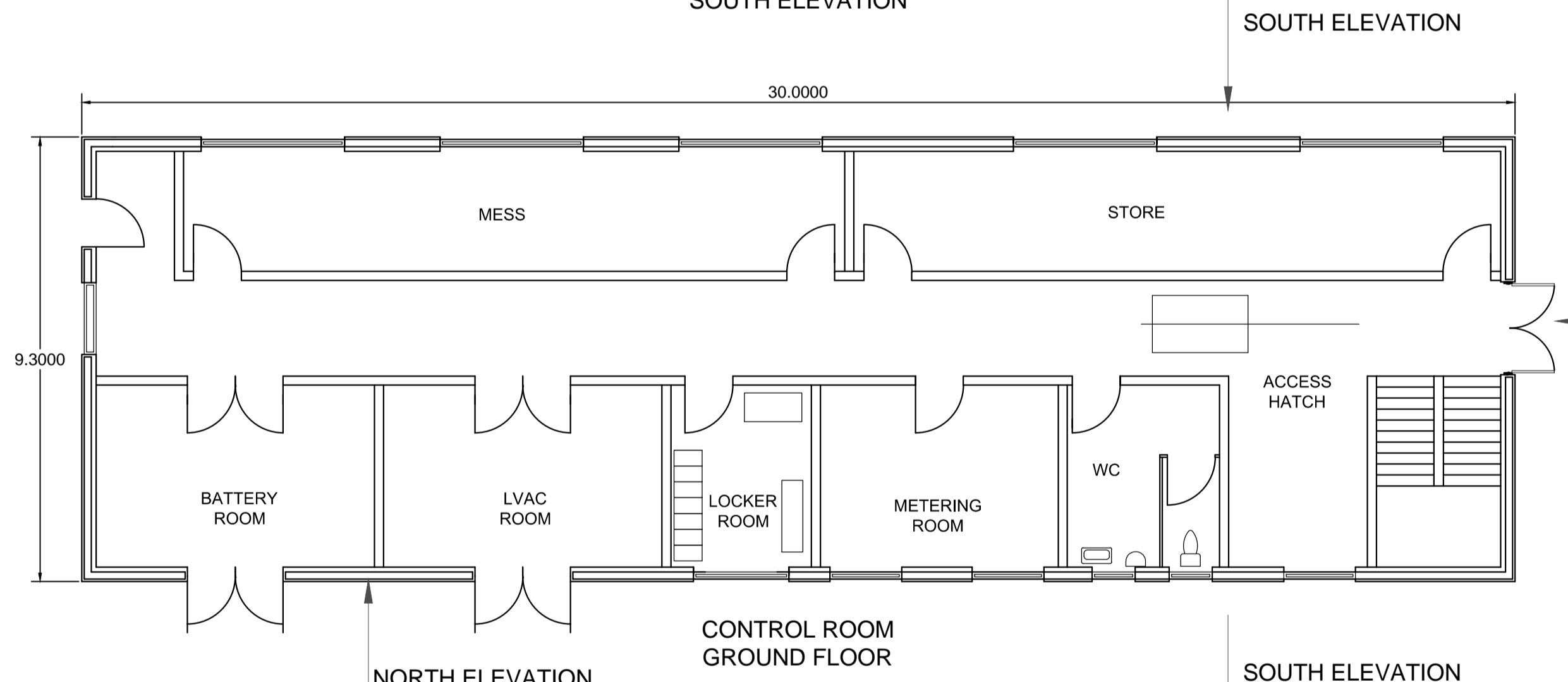
DOWN PIPE: ALUTEC EXTRUDED ALUMINIUM 120mm DIAMETER TUBE OR SIMILAR APPROVED TO BS 1474:1987 WITH CAST SOCKETS TO BS1490:1970. ELECTROSTATIC POLYESTER POWDER COATED TO BS6496:1984.



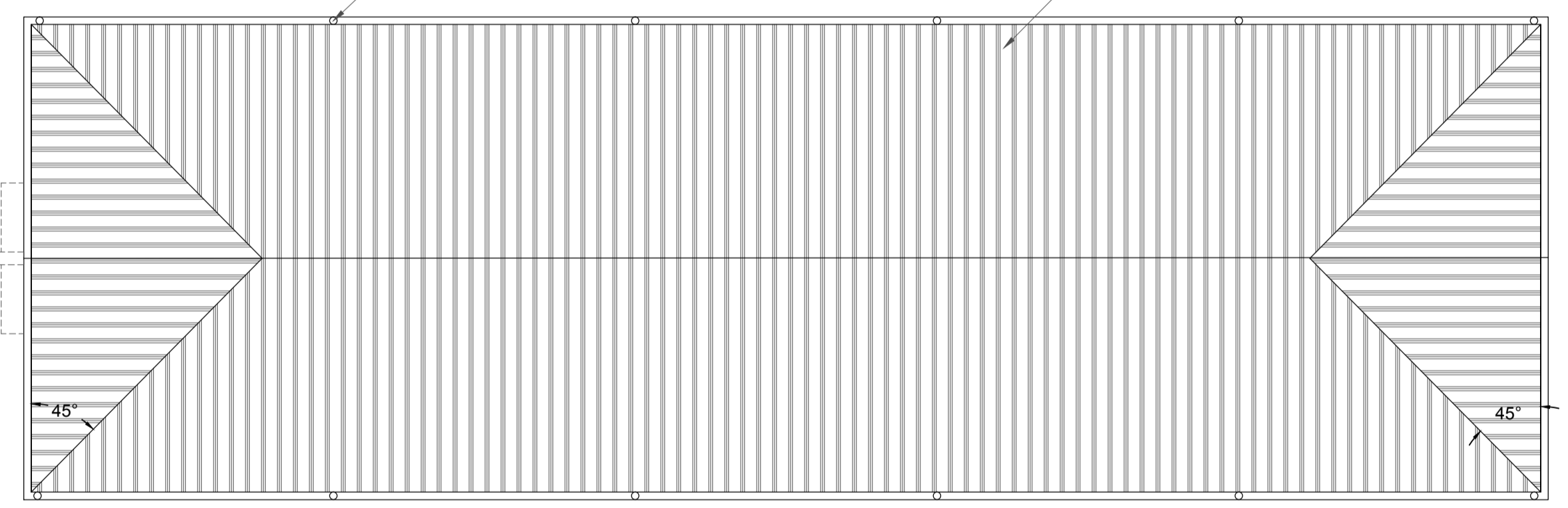
EAST ELEVATION

ROOF FINISH: GALVANISED METAL KS1000RW TRAPEZOIDAL PANELS OR SIMILAR APPROVED

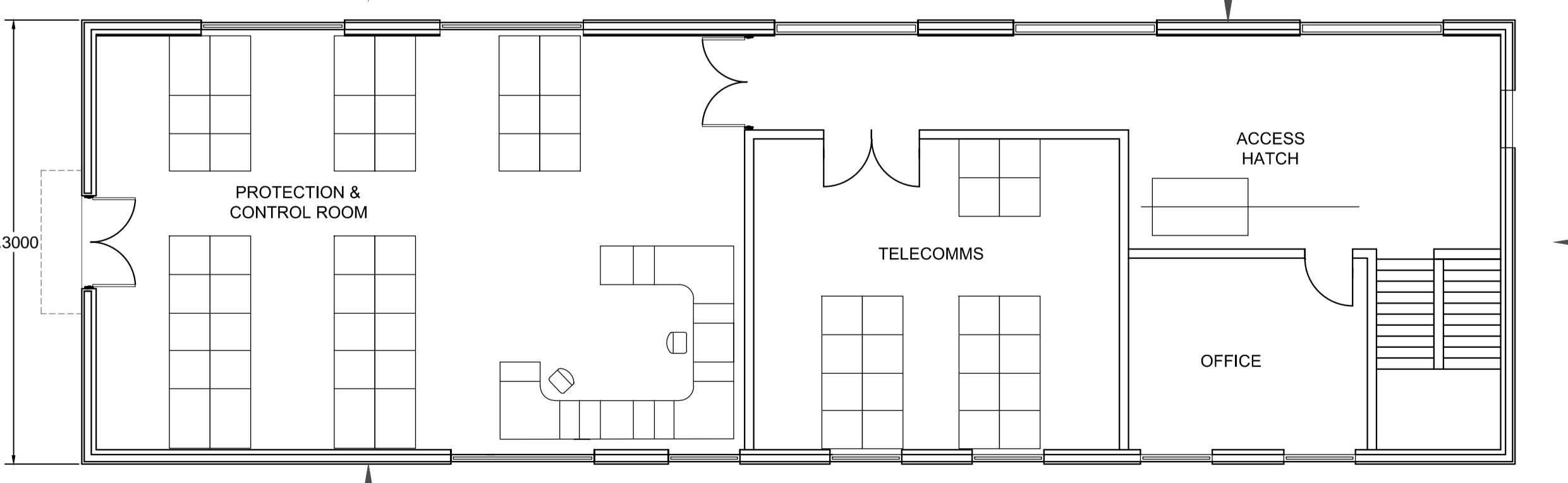
INDICATIVE DOWNPIPE LOCATION AT 6m CENTRES



CONTROL ROOM GROUND FLOOR



ROOF PLAN



CONTROL ROOM FIRST FLOOR

**NOTES**

**COLOURS**

TRAPEZOIDAL PANELS/CLADDING: NATO GREEN (BS381C) COLOUR NUMBER 285 OR OTHER AGREED AND APPROVED.

REFLECTIVITY: SURFACES SHOULD BE NON REFLECTIVE WITH TEXTURED CLADDING.

RENDERED BLOCKWORK: CAMOUFLAGE GREY (BS381C) COLOUR NUMBER 626 OR OTHER AGREED AND APPROVED

**FINISHED FLOOR LEVEL**  
THE PROPOSED BUILDINGS WILL CONFORM WITH ALL BUILDING REGULATIONS.  
FINISHED FLOOR LEVEL WILL BE 300MM ABOVE OUTSIDE FINISHED GROUND LEVEL OF 17.75m

Status: **PLANNING**



Project: **TYRONE TO CAVAN INTERCONNECTOR**

Title: **PROPOSED PLANS & ELEVATIONS OF CONTROL BUILDING**

Design: PB Power	CAD: PB Power
Chk'd: PB Power	App'd: PB Power
Date: 03/03/13	Scale: 1:100

No. 60032220 00 300

Rev: A

cm A1