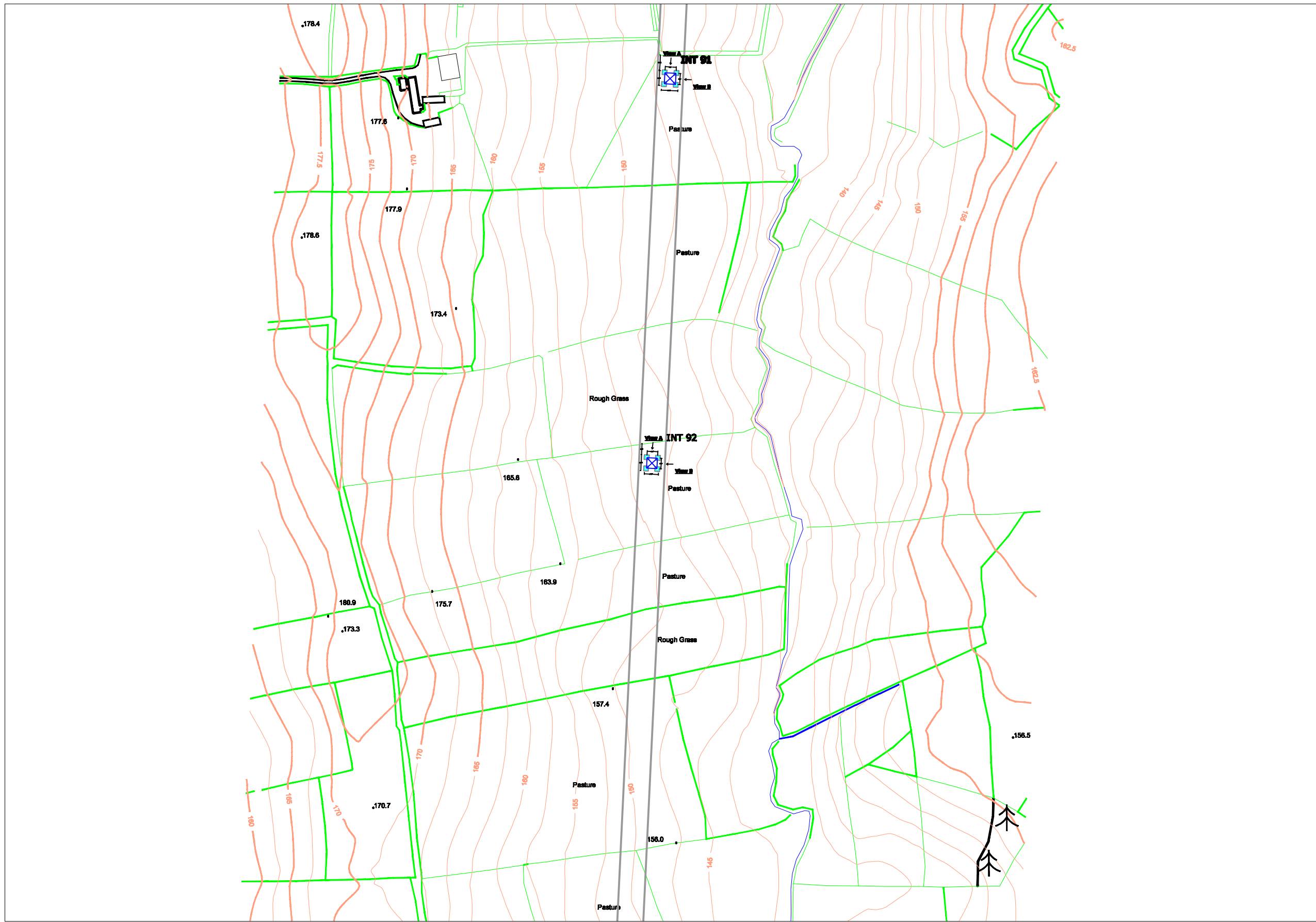
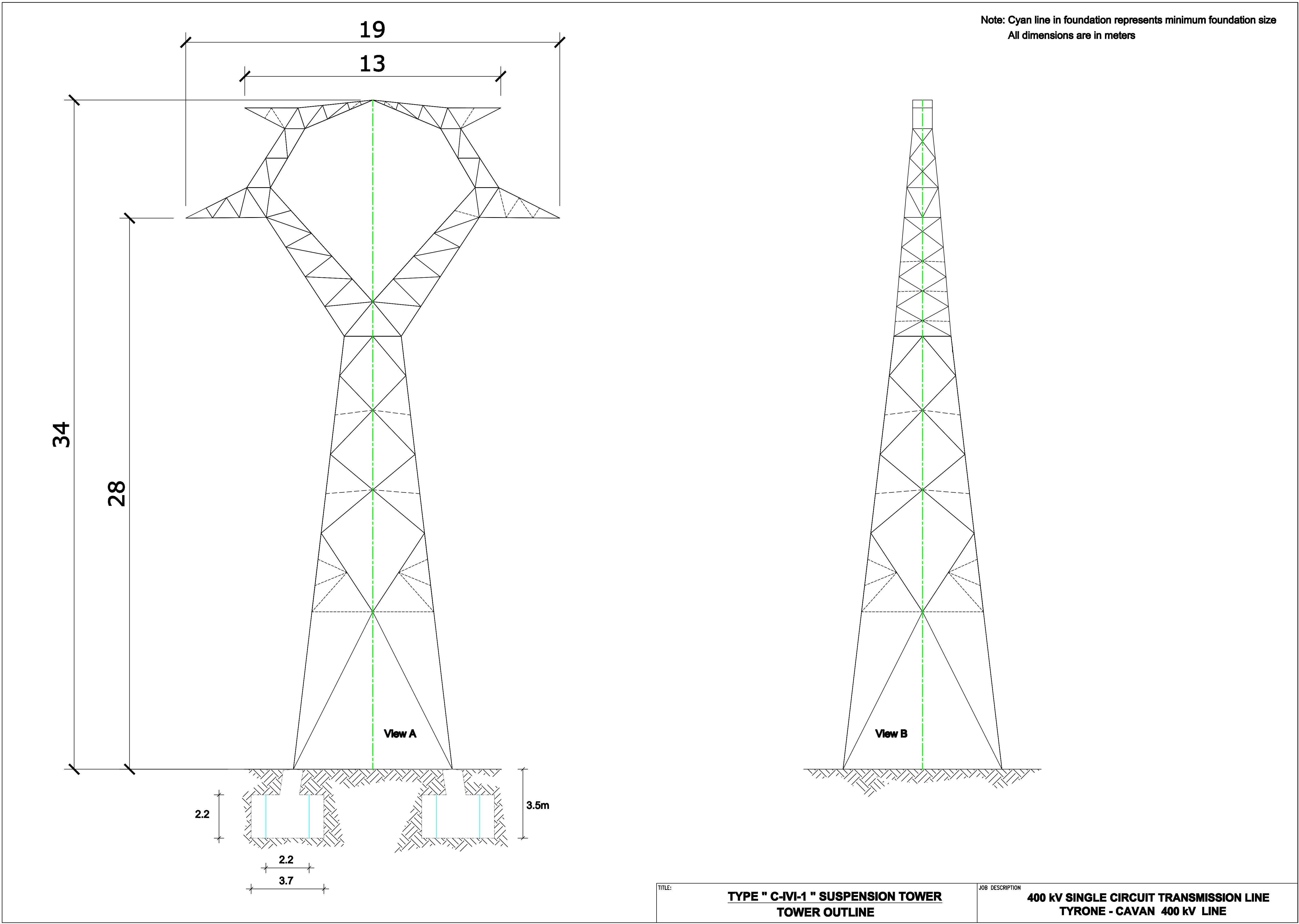


View 1
Not To
Scale



View 2: 1/100



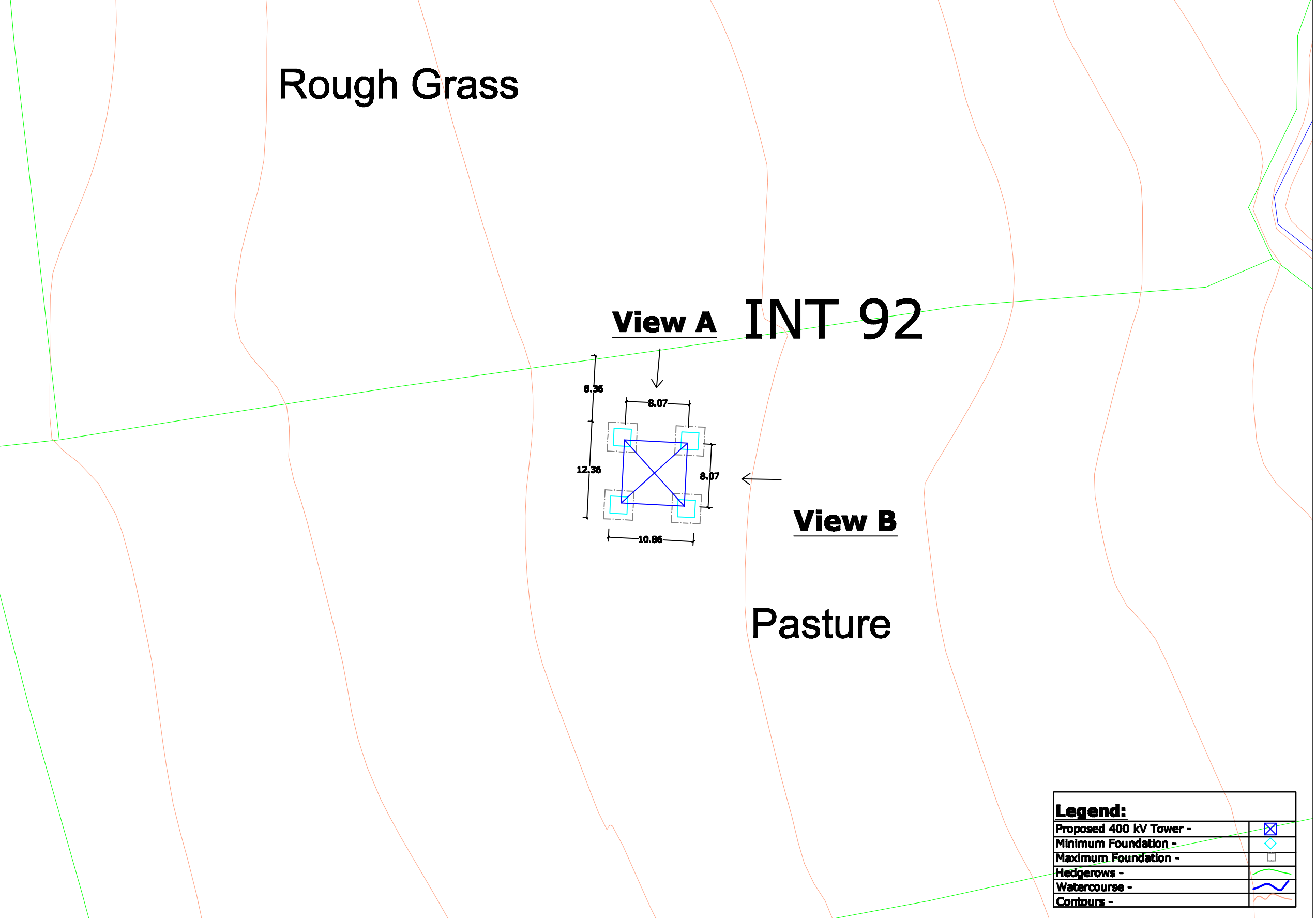
View 3: Not To Scale



View 4: Not To Scale



View 5: 1/500



- View 1 - Site Location Map
View 2 - Tower Drawing
View 3 - Associated Works Drawing
View 4 - Overhead Line Route Map
View 5 - Tower & Foundation Layout

Note:
All foundations and towers are square in plan.

REV.	DATE	ISSUED FOR	AB	AB	AB	AB	AB	AB	AB
0	00.00.00	ISSUED FOR							
PURPOSE OF ISSUE - PRELIMINARY UNLESS INDICATED									
TENDER <input type="checkbox"/> CLIENT APPROVAL <input type="checkbox"/> CONSTRUCTION <input type="checkbox"/> AS-BUILT <input type="checkbox"/> REVISED <input type="checkbox"/>									
Client: N.I.E.									
Project: Tyrone - Cavan 400 kV Interconnector									
Contract:									
Drawing Title: Proposed 400 kV Line Structure Location No 92 Composite Drawing									
Production Unit: High Voltage									
ES&F Engineering Solutions, Stephen Court, 16-21 St. Stephens Green, Dublin 2, Ireland. Tel: +353 (0)1 708 8000 Fax: +353 (0)1 708 7188 Email: marketing@esf.ie Web: www.esf.ie ES&F Engineering Solutions is a trading name of ES&F Engineering & Facility Management Limited. Registered Office as above. Registered in Ireland No. 112254.									
DESIGN	PROJECT	DESIGN	CM	APPROVED	APPROVED	APPROVED	APPROVED	APPROVED	APPROVED
JW	JW	JW	JW	JW	JW	JW	JW	JW	JW
CLIENT REP	102	AD	AD	AD	AD	AD	AD	AD	AD
DRAWING NUMBER: PE687-D141-093-092-000									