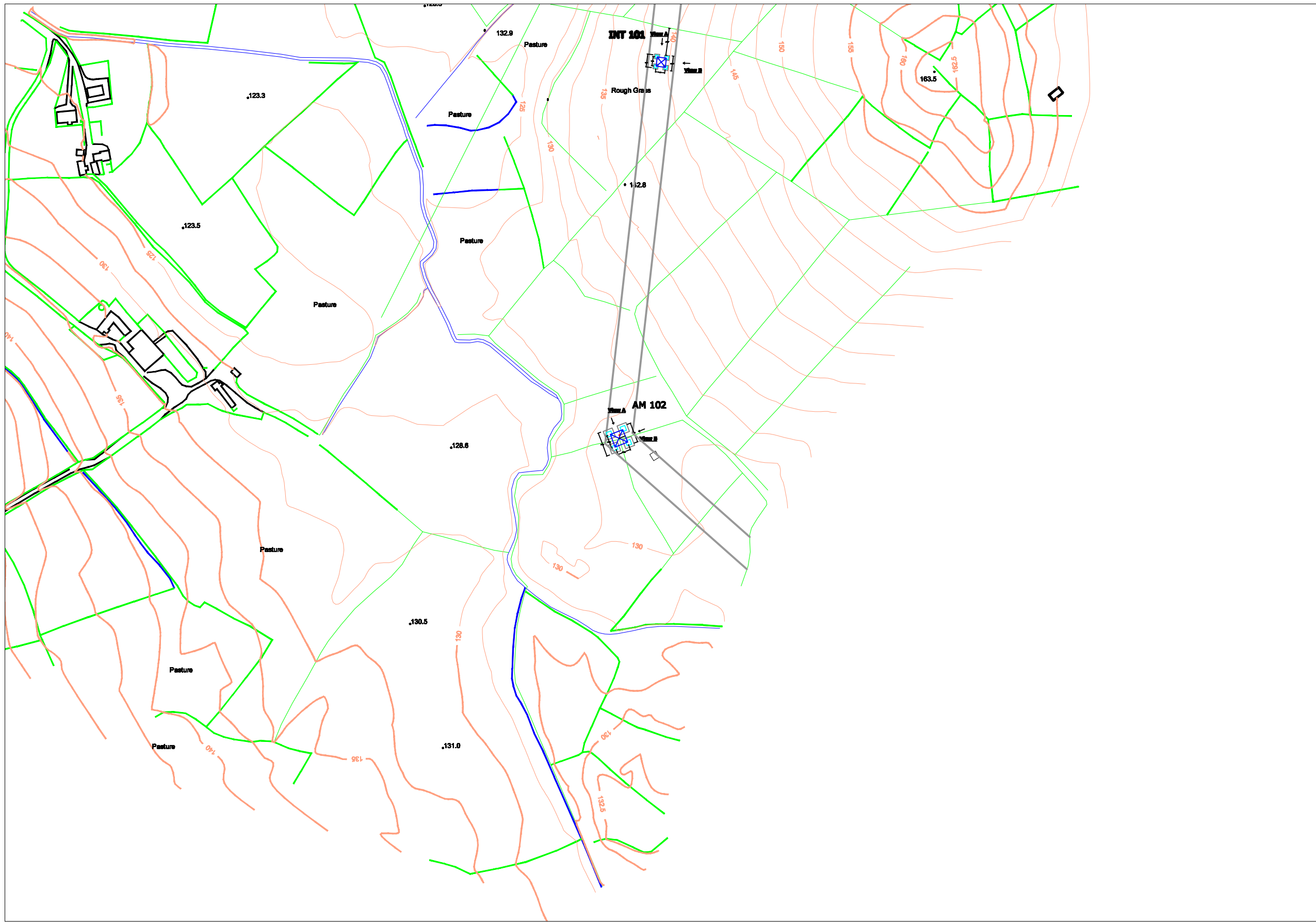
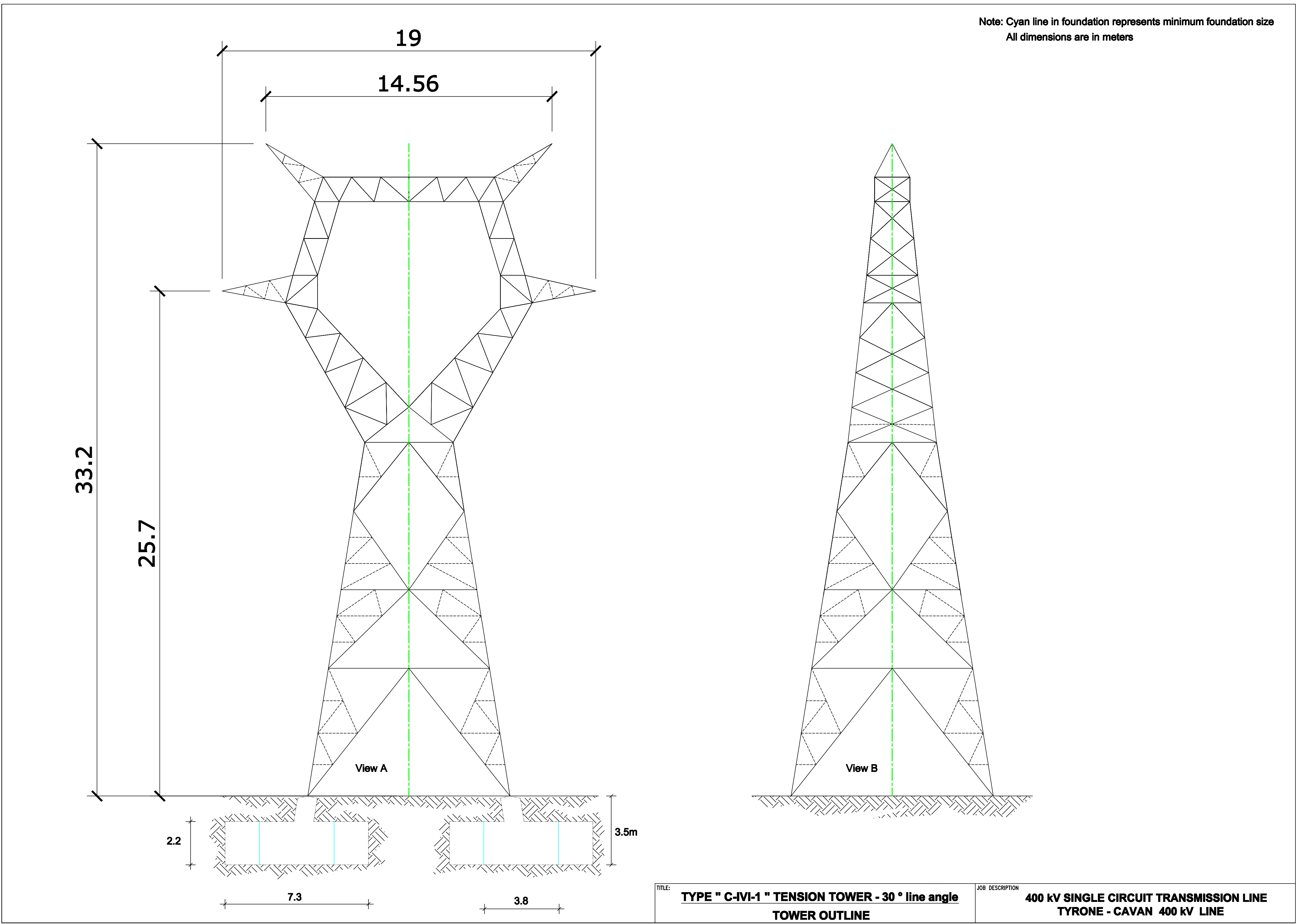


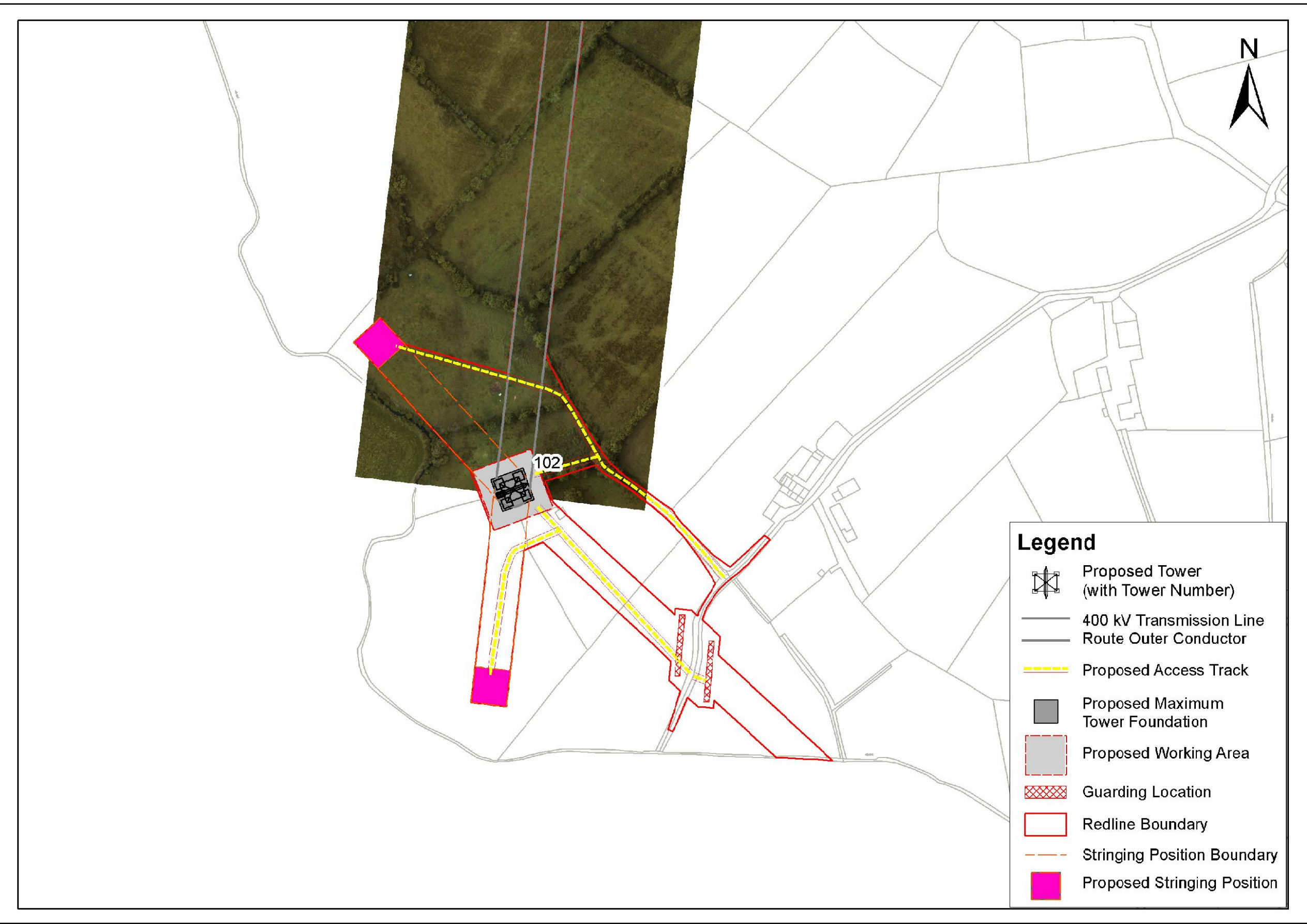
View 1
Not To
Scale



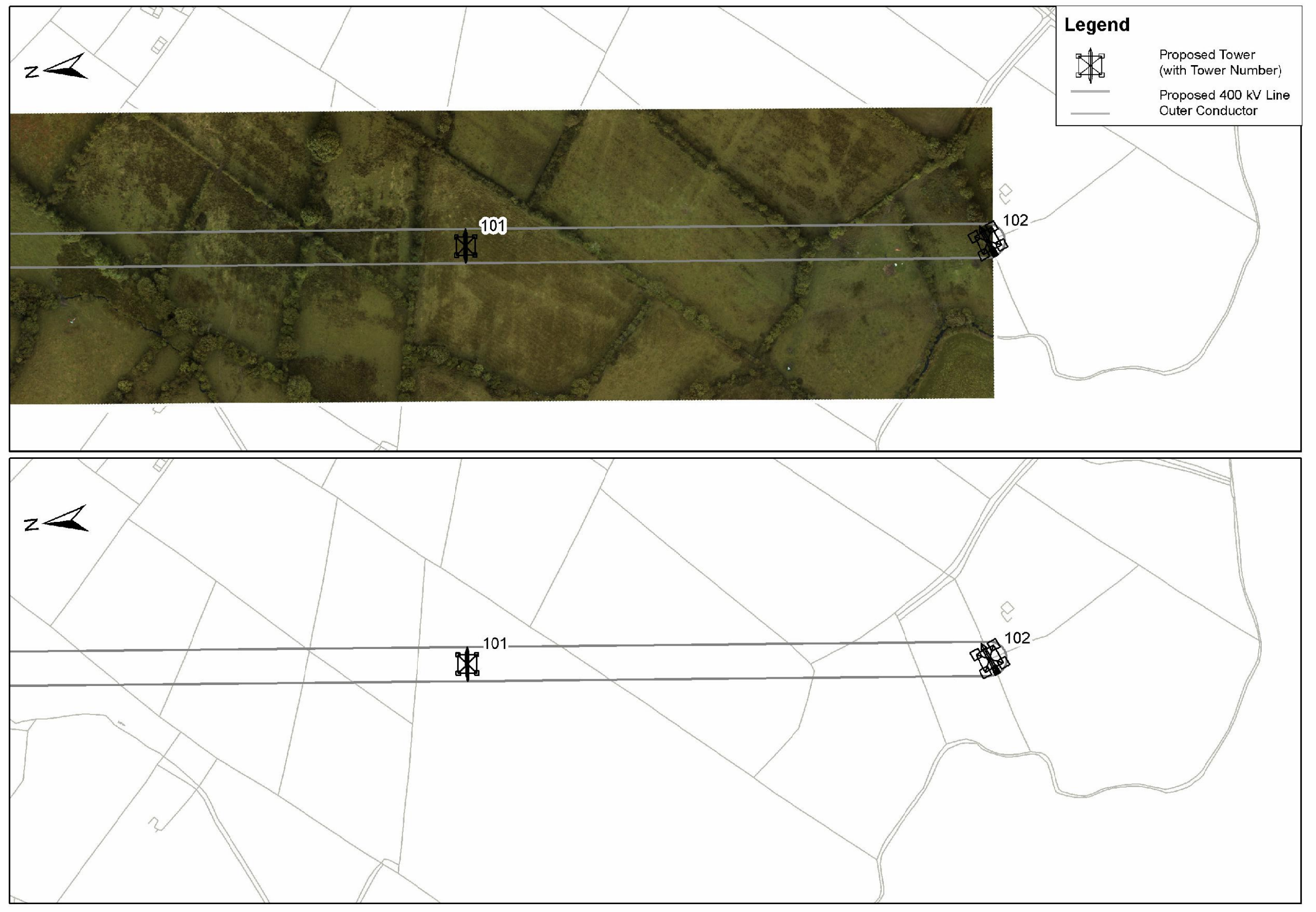
View 2: 1/100



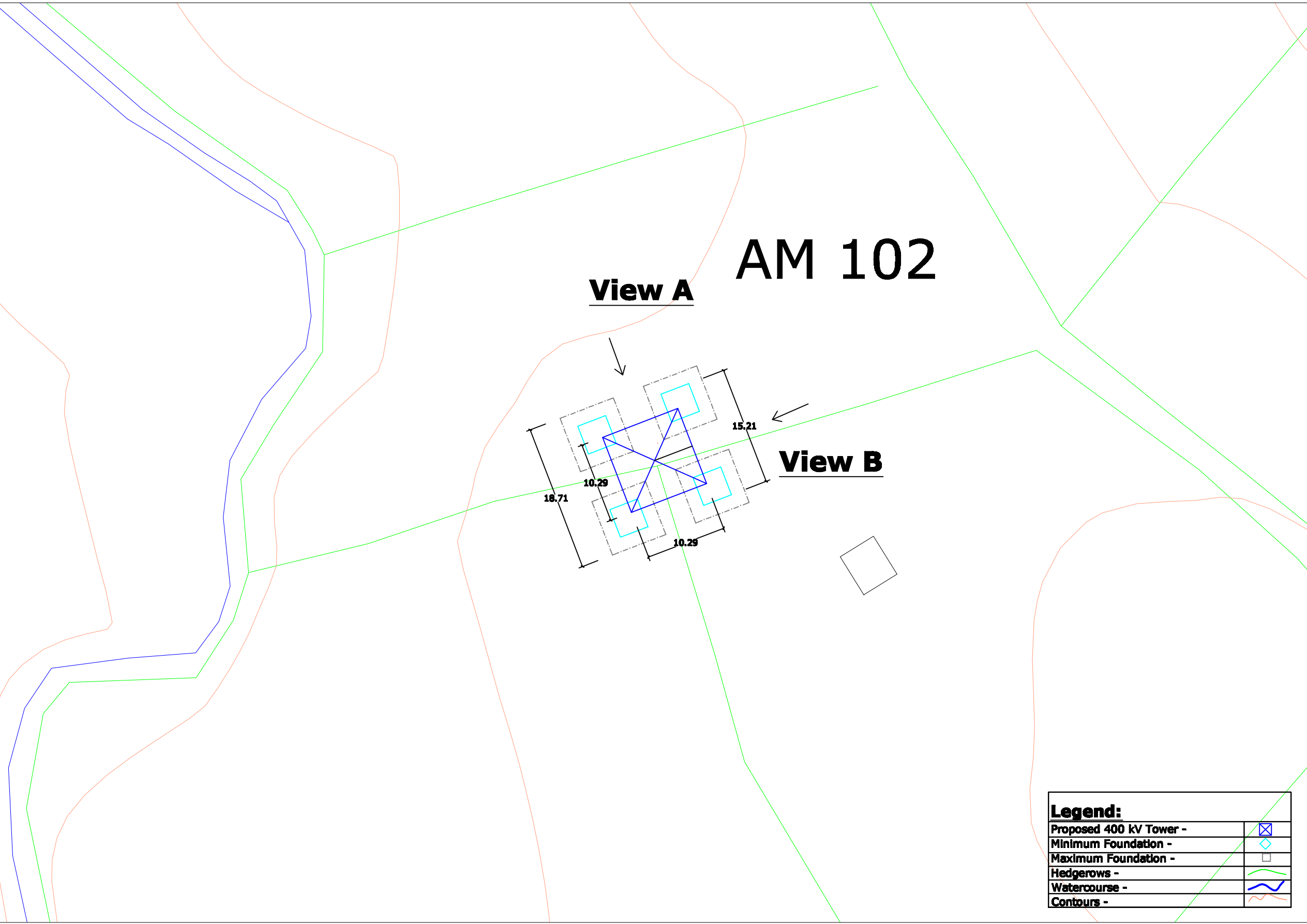
View 3: Not To Scale



View 4: Not To Scale



View 5: 1/500



View 1 - Site Location Map
View 2 - Tower Drawing
View 3 - Associated Works Drawing
View 4 - Overhead Line Route Map
View 5 - Tower & Foundation Layout

Note:
All foundations and towers are square in plan.

REV.	DATE	ISSUED FOR	AB	AB	AB	AB
PURPOSE OF ISSUE - PRELIMINARY UNLESS INDICATED						
TENDER	APPROVAL	CONSTRUCTION	AS-BUILT	REVISED		
Client: N.I.E.						
Project: Tyrone - Cavan 400 kV Interconnector						
Contract:						
Drawing Title: Proposed 400 kV Line Structure Location No 102 Composite Drawing						
Production Unit: High Voltage						
ES&I Energy Innovation						
ES&I Engineering Solutions, Stephen Court, 16-21 St. Stephen's Green, Dublin 2, Ireland. Tel: +353 (0)1 708 8000 Fax: +353 (0)1 708 7188 Email: marketing@es-i.ie Web: www.es-i.ie ES&I Engineering Solutions is a trading name of ES&I Engineering & Facility Management Limited. Registered Office as above. Registered in Ireland No. 102546						
OWNER	DESIGNER	ENGINEER	APPROVED	APPROVAL	APPROVAL	
JW	JW	CM	JD	RD	April 2013	
CLIENT REP	DESIGNER	ENGINEER	APPROVED	APPROVAL	As Shown	
102	AD	AD	AD	AD		
DRAWING NUMBER: PE687-D141-093-102-000						