

Rev	Date	Revision Description	Drn	Pro	Ver	App

COPYRIGHT © ESBI ENGINEERING & FACILITY MANAGEMENT LIMITED.
All rights reserved. No part of this work may be modified or reproduced or copied in any form or by any means - graphics, electronic or mechanical, including photocopying, recording, taping or information-and-retrieval system, or used for any purpose than its designated purpose, without the written permission of ESBI Engineering & Facility Management Ltd.

ESB INTERNATIONAL

ESB International
18/21 Stephen Court, St. Stephen's Green, Dublin 2
Tel: 353 1 703 8000 Email: marketing@esbi.ie Web: www.esbi.ie
ESB International is a trading name of ESBI Engineering & Facility Management Ltd
Registered Office: as above Registered in Ireland No. 155249

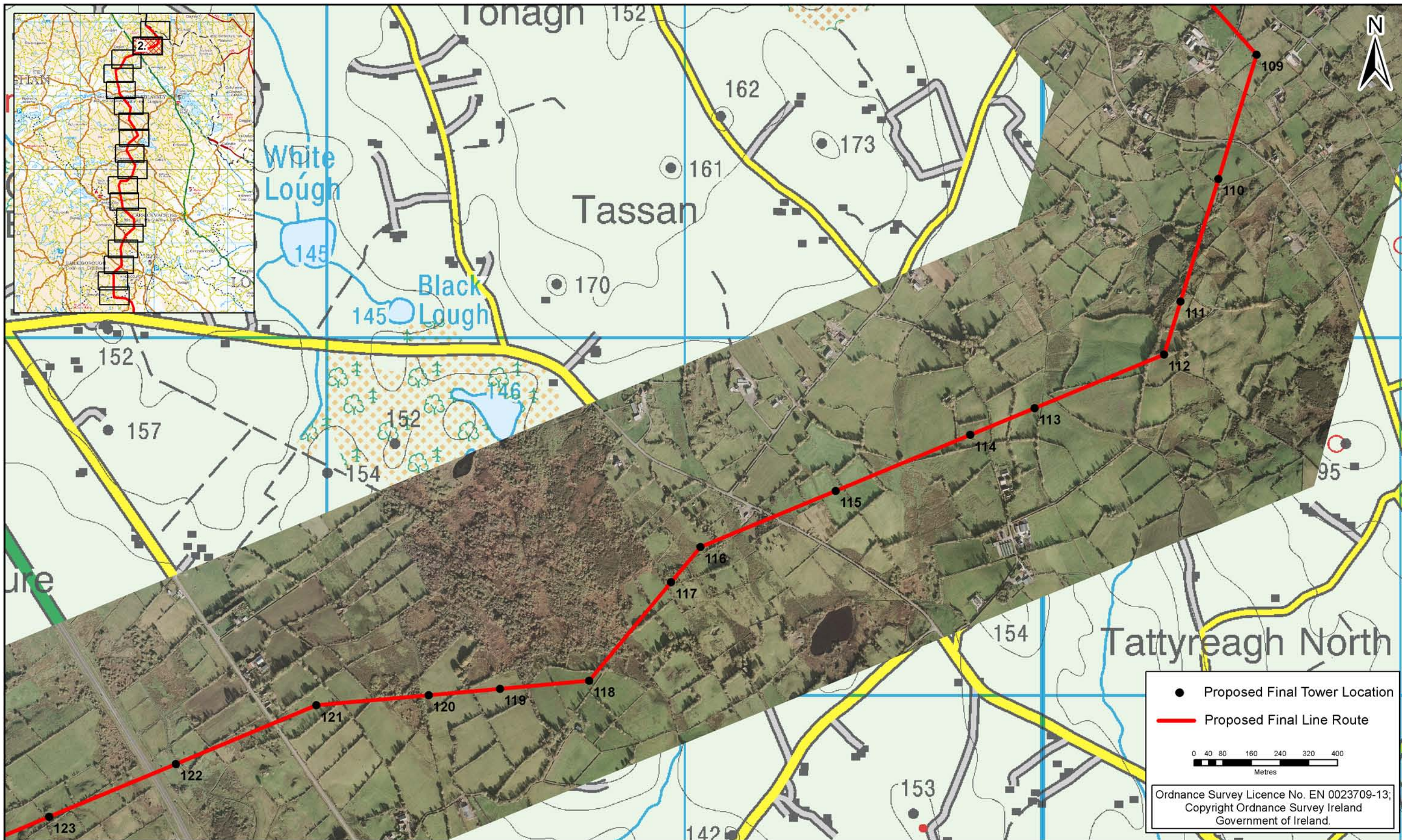
Client
EIRGRID

Project
North-South 400 kV
Interconnection Development

Drawing title
**Proposed Final Line Route
(CMSA)
Sheet 01 of 18**

Production unit
High Voltage Engineering

Drawn KS	Produced KS	Verified KC	Approved CM	Approved date Oct-13
Client ref.	No. of sheets 01 of 18	Size A3	Scale 1 : 10,000	
Drawing number PE687-D141-126-001-000		Sheet Rev		



Rev	Date	Revision Description	Drn	Pro	Ver	App

COPYRIGHT © ESB ENGINEERING & FACILITY MANAGEMENT LIMITED.
All rights reserved. No part of this work may be modified or reproduced or copied in any form or by any means - graphics, electronic or mechanical, including photocopying, recording, taping or information-and-retrieval system, or used for any purpose than its designated purpose, without the written permission of ESB Engineering & Facility Management Ltd.

ESB INTERNATIONAL

ESB International
18/21 Stephen Court, St. Stephen's Green, Dublin 2
Tel: 353 1 703 8000 Email: marketing@esbi.ie Web: www.esbi.ie
ESB International is a trading name of ESB Engineering & Facility Management Ltd
Registered Office: as above Registered in Ireland No. 155249

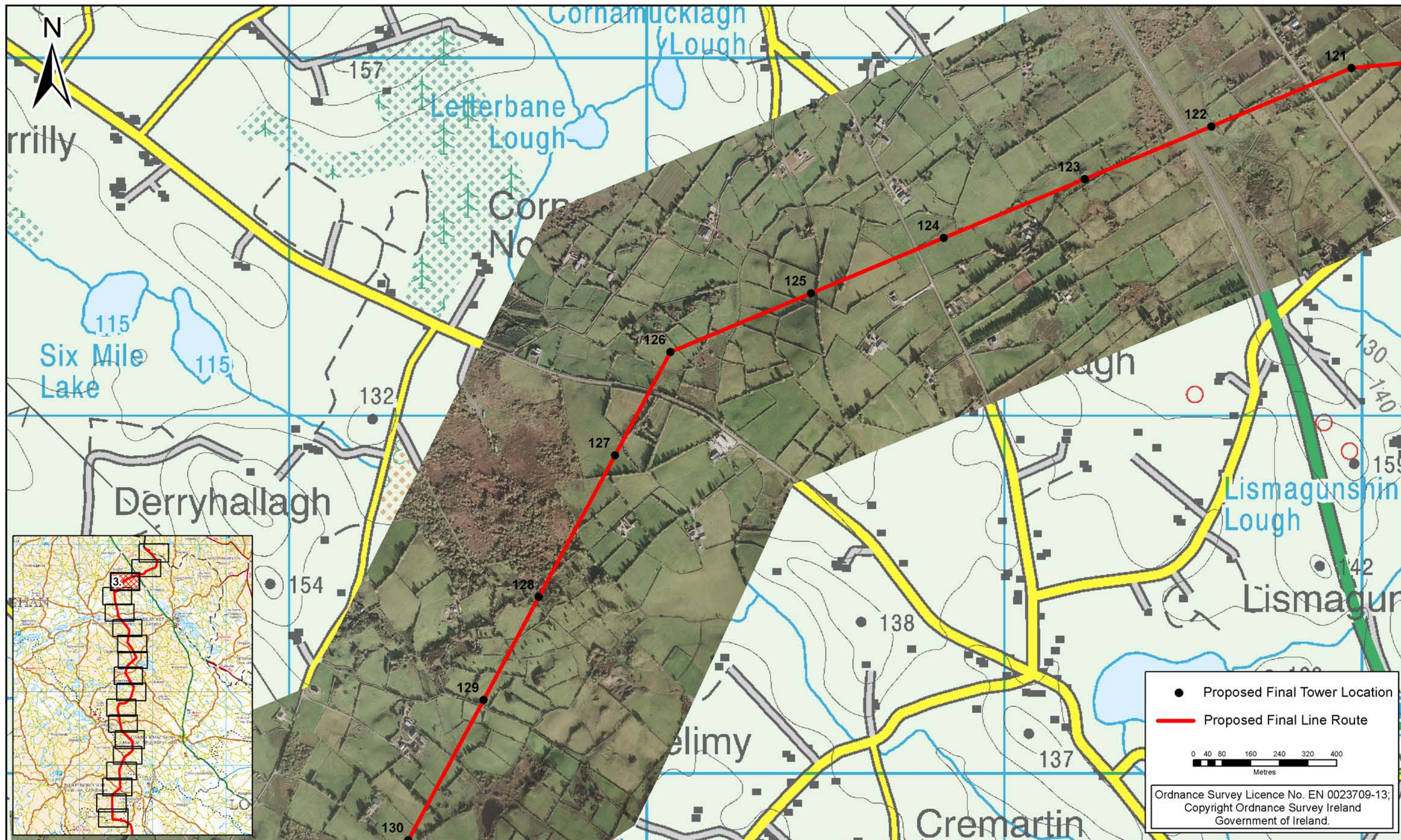
Client
EIRGRID

Project
North-South 400 kV
Interconnection Development

Drawing title
**Proposed Final Line Route
(CMSA)
Sheet 02 of 18**

Production unit
High Voltage Engineering

Drawn KS	Produced KS	Verified KC	Approved CM	Approved date Oct-13
Client ref.	No. of sheets 02 of 18	Size A3	Scale 1 : 10,000	
Drawing number PE687-D141-126-002-000		Sheet Rev		



Rev	Date	Revision Description	Dr	Pro	Ver	App

COPYRIGHT © ESB ENGINEERING & FACILITY MANAGEMENT LIMITED.
All rights reserved. No part of this work may be modified or reproduced or copied in any form or by any means - graphics, electronic or mechanical, including photocopying, recording, taping or information-and-retrieval system, or used for any purpose than its designated purpose, without the written permission of ESB Engineering & Facility Management Ltd.

ESB INTERNATIONAL

ESB International
18/21 Stephen Court, St. Stephen's Green, Dublin 2
Tel: 353 1 703 8000 Email: marketing@esbi.ie Web: www.esbi.ie
ESB International is a trading name of ESB Engineering & Facility Management Ltd
Registered Office: as above Registered in Ireland No. 155249

Client
EIRGRID

Project
North-South 400 kV
Interconnection Development

Drawing title
Proposed Final Line Route (CMSA)
Sheet 03 of 18

Production unit
High Voltage Engineering

Drawn KS	Produced KS	Verified KC	Approved CM	Approved date Oct-13
Client ref.	No. of sheets 03 of 18	Size A3	Scale 1 : 10,000	
Drawing number PE687-D141-126-003-000		Sheet Rev		



Rev	Date	Revision Description	Drn	Pro	Ver	App

COPYRIGHT © ESB ENGINEERING & FACILITY MANAGEMENT LIMITED.
All rights reserved. No part of this work may be modified or reproduced or copied in any form or by any means - graphics, electronic or mechanical, including photocopying, recording, taping or information-and-retrieval system, or used for any purpose than its designated purpose, without the written permission of ESB Engineering & Facility Management Ltd.

ESB INTERNATIONAL

ESB International
18/21 Stephen Court, St. Stephen's Green, Dublin 2
Tel: 353 1 703 8000 Email: marketing@esbi.ie Web: www.esbi.ie
ESB International is a trading name of ESB Engineering & Facility Management Ltd
Registered Office: as above Registered in Ireland No. 155249

Client
EIRGRID

Project
North-South 400 kV
Interconnection Development

Drawing title
Proposed Final Line Route
(CMSA)
Sheet 04 of 18

Production unit
High Voltage Engineering

Drawn KS	Produced KS	Verified KC	Approved CM	Approved date Oct-13
Client ref.	No. of sheets 04 of 18	Size A3	Scale 1 : 10,000	
Drawing number PE687-D141-126-004-000		Sheet Rev		



Rev	Date	Revision Description	Dm	Pro	Ver	App
1	Nov-13	Tower Move 143	KS	KS	KC	CM

COPYRIGHT © ESB ENGINEERING & FACILITY MANAGEMENT LIMITED.
All rights reserved. No part of this work may be modified or reproduced or copied in any form or by any means - graphics, electronic or mechanical, including photocopying, recording, taping or information-and-retrieval system, or used for any purpose than its designated purpose, without the written permission of ESB Engineering & Facility Management Ltd.

ESB INTERNATIONAL

ESB International
18/21 Stephen Court, St. Stephen's Green, Dublin 2
Tel: 353 1 703 8000 Email: marketing@esbi.ie Web: www.esbi.ie
ESB International is a trading name of ESB Engineering & Facility Management Ltd
Registered Office: as above Registered in Ireland No. 155249

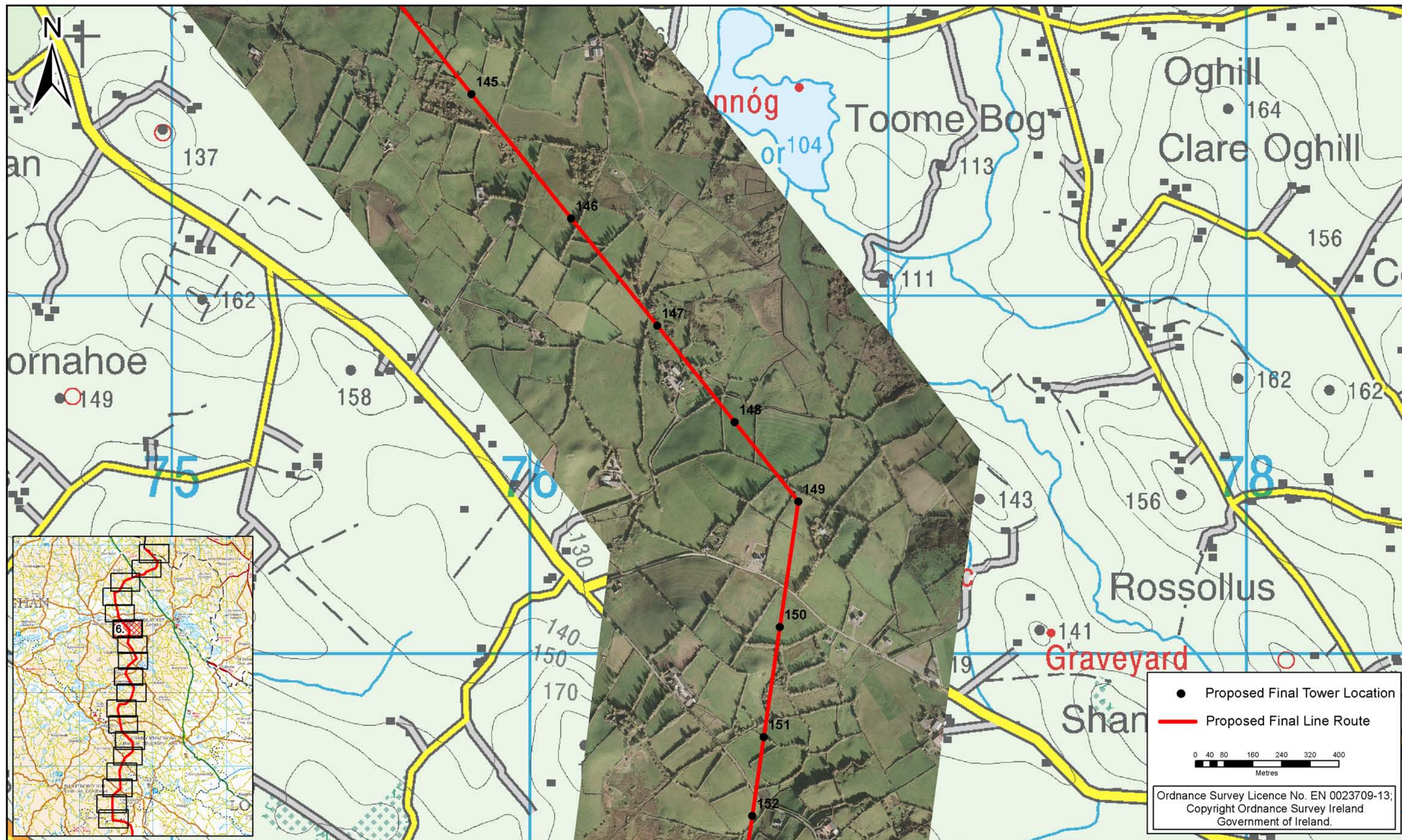
Client
EIRGRID

Project
North-South 400 kV
Interconnection Development

Drawing title
**Proposed Final Line Route
(CMSA)
Sheet 05 of 18**

Production unit
High Voltage Engineering

Drawn KS	Produced KS	Verified KC	Approved CM	Approved date Nov-13
Client ref.		No. of sheets 05 of 18	Size A3	Scale 1 : 10,000
Drawing number PE687-D141-126-005-001		Sheet Rev		



Rev	Date	Revision Description	Drn	Pro	Ver	App

COPYRIGHT © ESB ENGINEERING & FACILITY MANAGEMENT LIMITED.
 All rights reserved. No part of this work may be modified or reproduced or copied in any form or by any means - graphics, electronic or mechanical, including photocopying, recording, taping or information-and-retrieval system, or used for any purpose than its designated purpose, without the written permission of ESB Engineering & Facility Management Ltd.

ESB INTERNATIONAL

ESB International
 18/21 Stephen Court, St. Stephen's Green, Dublin 2
 Tel: 353 1 703 8000 Email: marketing@esbi.ie Web: www.esbi.ie
 ESB International is a trading name of ESB Engineering & Facility Management Ltd
 Registered Office: as above Registered in Ireland No. 155249

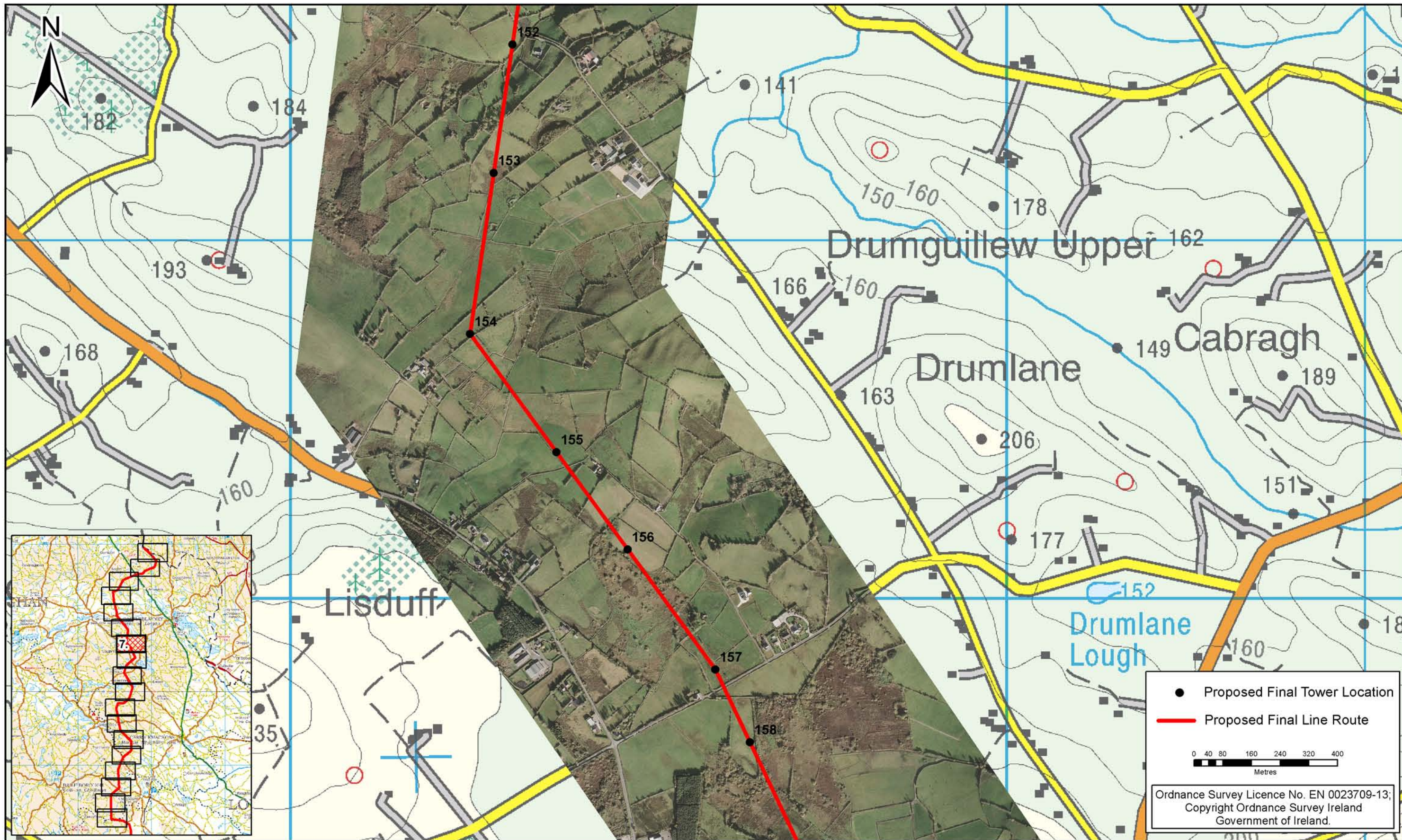
Client
EIRGRID

Project
 North-South 400 kV
 Interconnection Development

Drawing title
 Proposed Final Line Route
 (CMSA)
 Sheet 06 of 18

Production unit
 High Voltage Engineering

Drawn KS	Produced KS	Verified KC	Approved CM	Approved date Oct-13
Client ref.	No. of sheets 06 of 18	Size A3	Scale 1 : 10,000	
Drawing number PE687-D141-126-006-000		Sheet Rev		



Rev	Date	Revision Description	Om	Pro	Ver	App

COPYRIGHT © ESB ENGINEERING & FACILITY MANAGEMENT LIMITED.
All rights reserved. No part of this work may be modified or reproduced or copied in any form or by any means - graphics, electronic or mechanical, including photocopying, recording, taping or information-and-retrieval system, or used for any purpose than its designated purpose, without the written permission of ESB Engineering & Facility Management Ltd.

ESB INTERNATIONAL

ESB International
18/21 Stephen Court, St. Stephen's Green, Dublin 2
Tel: 353 1 703 8000 Email: marketing@esbi.ie Web: www.esbi.ie
ESB International is a trading name of ESB Engineering & Facility Management Ltd
Registered Office: as above Registered in Ireland No. 155249

Client
EIRGRID

Project
North-South 400 kV
Interconnection Development

Drawing title
**Proposed Final Line Route
(CMSA)
Sheet 07 of 18**

Production unit
High Voltage Engineering

Drawn KS	Produced KS	Verified KC	Approved CM	Approved date Oct-13
Client ref.	No. of sheets 07 of 18	Size A3	Scale 1 : 10,000	
Drawing number PE687-D141-126-007-000		Sheet Rev		



Rev	Date	Revision Description	Dr	Pro	Ver	App

COPYRIGHT © ESB ENGINEERING & FACILITY MANAGEMENT LIMITED.
All rights reserved. No part of this work may be modified or reproduced or copied in any form or by any means - graphics, electronic or mechanical, including photocopying, recording, taping or information-and-retrieval system, or used for any purpose than its designated purpose, without the written permission of ESB Engineering & Facility Management Ltd.

ESB INTERNATIONAL

ESB International
18/21 Stephen Court, St. Stephen's Green, Dublin 2
Tel: 353 1 703 8000 Email: marketing@esbi.ie Web: www.esbi.ie
ESB International is a trading name of ESB Engineering & Facility Management Ltd
Registered Office: as above Registered in Ireland No. 155249

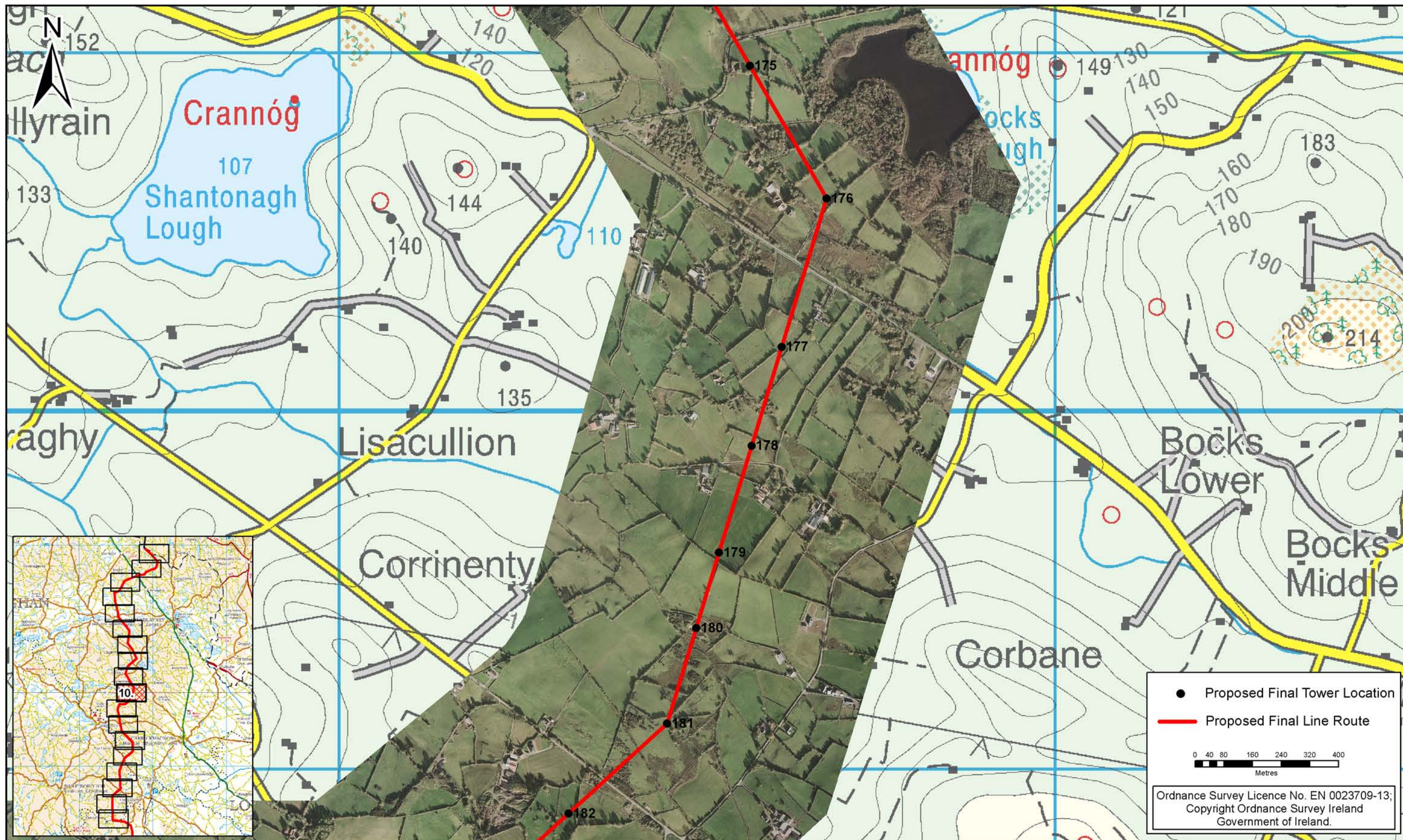
Client
EIRGRID

Project
North-South 400 kV
Interconnection Development

Drawing title
Proposed Final Line Route (CMSA)
Sheet 09 of 18

Production unit
High Voltage Engineering

Drawn KS	Produced KS	Verified KC	Approved CM	Approved date Oct-13
Client ref.		No. of sheets 09 of 18	Size A3	Scale 1 : 10,000
Drawing number PE687-D141-126-009-000		Sheet Rev		



Rev	Date	Revision Description	Om	Pro	Ver	App

COPYRIGHT © ESB ENGINEERING & FACILITY MANAGEMENT LIMITED.
All rights reserved. No part of this work may be modified or reproduced or copied in any form or by any means - graphics, electronic or mechanical, including photocopying, recording, taping or information-and-retrieval system, or used for any purpose than its designated purpose, without the written permission of ESB Engineering & Facility Management Ltd.

ESB INTERNATIONAL

ESB International
18/21 Stephen Court, St. Stephen's Green, Dublin 2
Tel: 353 1 703 8000 Email: marketing@esbi.ie Web: www.esbi.ie
ESB International is a trading name of ESB Engineering & Facility Management Ltd
Registered Office: as above Registered in Ireland No. 155249

Client
EIRGRID

Project
North-South 400 kV
Interconnection Development

Drawing title
Proposed Final Line Route (CMSA)
Sheet 10 of 18

Production unit
High Voltage Engineering

Drawn KS	Produced KS	Verified KC	Approved CM	Approved date Oct-13
Client ref.	No. of sheets 10 of 18	Size A3	Scale 1 : 10,000	
Drawing number PE687-D141-126-010-000		Sheet Rev		



Rev	Date	Revision Description	Dr	Pro	Ver	App

COPYRIGHT © ESB ENGINEERING & FACILITY MANAGEMENT LIMITED.
 All rights reserved. No part of this work may be modified or reproduced or copied in any form or by any means - graphics, electronic or mechanical, including photocopying, recording, taping or information-and-retrieval system, or used for any purpose than its designated purpose, without the written permission of ESB Engineering & Facility Management Ltd.

ESB INTERNATIONAL

ESB International
 18/21 Stephen Court, St. Stephen's Green, Dublin 2
 Tel: 353 1 703 8000 Email: marketing@esbi.ie Web: www.esbi.ie
 ESB International is a trading name of ESB Engineering & Facility Management Ltd
 Registered Office: as above Registered in Ireland No. 155249

Client

Project
 North-South 400 kV
 Interconnection Development

Drawing title
 Proposed Final Line Route
 (CMSA)
 Sheet 11 of 18
Production unit
 High Voltage Engineering

Drawn KS	Produced KS	Verified KC	Approved CM	Approved date Oct-13
Client ref.	No. of sheets 11 of 18	Size A3	Scale 1 : 10,000	
Drawing number PE687-D141-126-011-000	Sheet 11	Rev 001		



Rev	Date	Revision Description	Om	Pro	Ver	App

COPYRIGHT © ESB ENGINEERING & FACILITY MANAGEMENT LIMITED.
All rights reserved. No part of this work may be modified or reproduced or copied in any form or by any means - graphics, electronic or mechanical, including photocopying, recording, taping or information-and-retrieval system, or used for any purpose than its designated purpose, without the written permission of ESB Engineering & Facility Management Ltd.

ESB INTERNATIONAL

ESB International
18/21 Stephen Court, St. Stephen's Green, Dublin 2
Tel: 353 1 703 8000 Email: marketing@esbi.ie Web: www.esbi.ie
ESB International is a trading name of ESB Engineering & Facility Management Ltd
Registered Office: as above Registered in Ireland No. 155249

Client
EIRGRID

Project
North-South 400 kV
Interconnection Development

Drawing title
**Proposed Final Line Route
(CMSA)
Sheet 12 of 18**

Production unit
High Voltage Engineering

Drawn KS	Produced KS	Verified KC	Approved CM	Approved date Oct-13
Client ref.	No. of sheets 12 of 18	Size A3	Scale 1 : 10,000	

Drawing number
PE687-D141-126-012-000



Rev	Date	Revision Description	Dr	Pro	Ver	App

COPYRIGHT © ESB ENGINEERING & FACILITY MANAGEMENT LIMITED.
 All rights reserved. No part of this work may be modified or reproduced or copied in any form or by any means - graphics, electronic or mechanical, including photocopying, recording, taping or information-and-retrieval system, or used for any purpose than its designated purpose, without the written permission of ESB Engineering & Facility Management Ltd.

ESB INTERNATIONAL

ESB International
 18/21 Stephen Court, St. Stephen's Green, Dublin 2
 Tel: 353 1 703 8000 Email: marketing@esbi.ie Web: www.esbi.ie
 ESB International is a trading name of ESB Engineering & Facility Management Ltd
 Registered Office: as above Registered in Ireland No. 155249

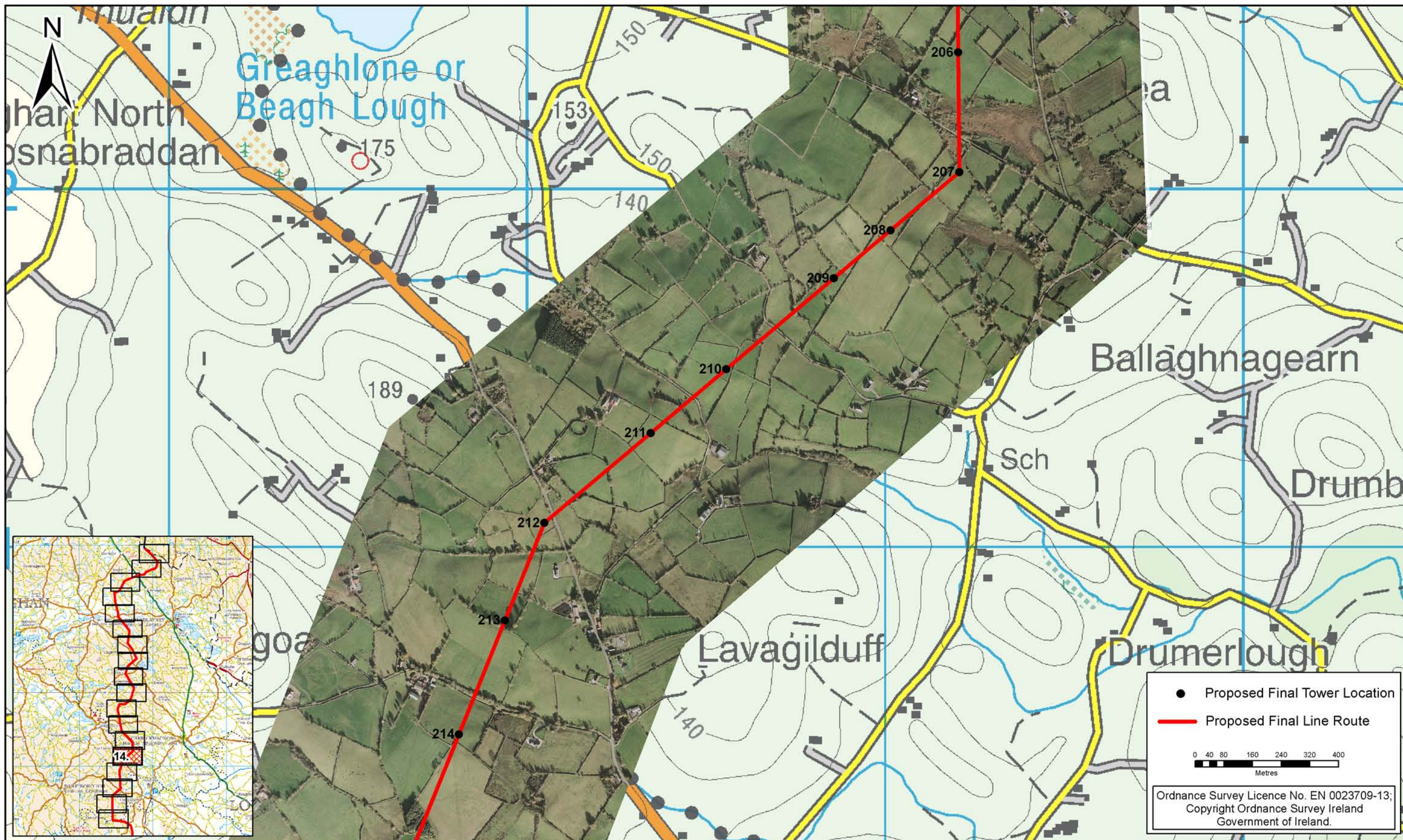
Client
EIRGRID

Project
 North-South 400 kV
 Interconnection Development

Drawing title
 Proposed Final Line Route
 (CMSA)
 Sheet 13 of 18

Production unit
 High Voltage Engineering

Drawn	Produced	Verified	Approved	Approved date
KS	KS	KC	CM	Oct-13
Client ref.	No. of sheets	Size	Scale	
	13 of 18	A3	1 : 10,000	
Drawing number	Sheet	Rev		
PE687-D141-126-013-000				



Rev	Date	Revision Description	Om	Pro	Ver	App

COPYRIGHT © ESB ENGINEERING & FACILITY MANAGEMENT LIMITED.
All rights reserved. No part of this work may be modified or reproduced or copied in any form or by any means - graphics, electronic or mechanical, including photocopying, recording, taping or information-and-retrieval system, or used for any purpose than its designated purpose, without the written permission of ESB Engineering & Facility Management Ltd.

ESB INTERNATIONAL

ESB International
18/21 Stephen Court, St. Stephen's Green, Dublin 2
Tel: 353 1 703 8000 Email: marketing@esbi.ie Web: www.esbi.ie
ESB International is a trading name of ESB Engineering & Facility Management Ltd
Registered Office: as above Registered in Ireland No. 155249

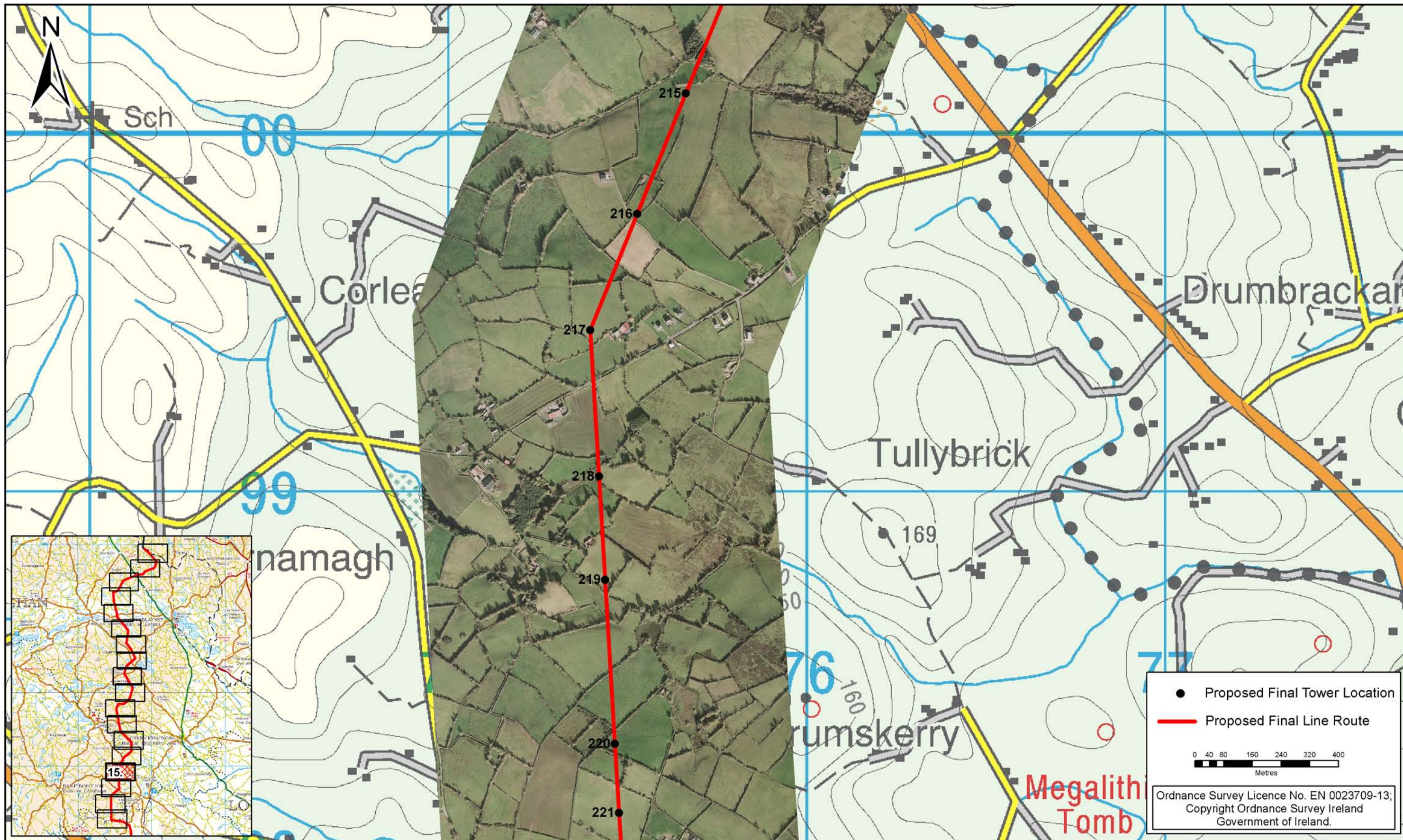
Client
EIRGRID

Project
North-South 400 kV
Interconnection Development

Drawing title
Proposed Final Line Route (CMSA)
Sheet 14 of 18

Production unit
High Voltage Engineering

Drawn KS	Produced KS	Verified KC	Approved CM	Approved date Oct-13
Client ref.	No. of sheets 14 of 18	Size A3	Scale 1 : 10,000	
Drawing number PE687-D141-126-014-000		Sheet Rev		



Rev	Date	Revision Description	Drn	Pro	Ver	App

COPYRIGHT © ESB ENGINEERING & FACILITY MANAGEMENT LIMITED.
All rights reserved. No part of this work may be modified or reproduced or copied in any form or by any means - graphics, electronic or mechanical, including photocopying, recording, taping or information-and-retrieval system, or used for any purpose than its designated purpose, without the written permission of ESB Engineering & Facility Management Ltd.

ESB INTERNATIONAL

ESB International
18/21 Stephen Court, St. Stephen's Green, Dublin 2
Tel: 353 1 703 8000 Email: marketing@esbi.ie Web: www.esbi.ie
ESB International is a trading name of ESB Engineering & Facility Management Ltd
Registered Office: as above Registered in Ireland No. 155249

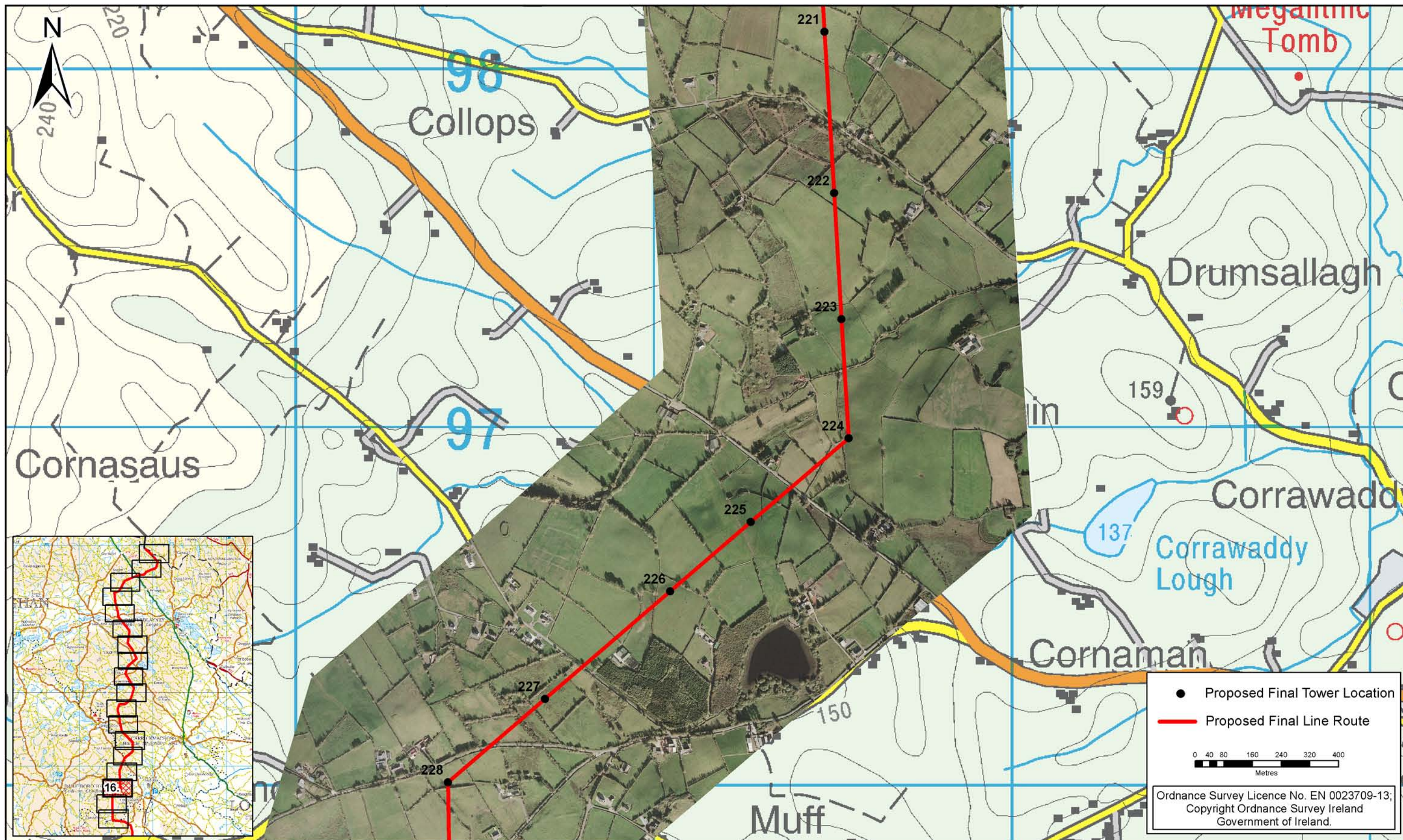
Client
EIRGRID

Project
North-South 400 kV
Interconnection Development

Drawing title
**Proposed Final Line Route
(CMSA)
Sheet 15 of 18**

Production unit
High Voltage Engineering

Drawn KS	Produced KS	Verified KC	Approved CM	Approved date Oct-13
Client ref.	No. of sheets 15 of 18	Size A3	Scale 1 : 10,000	
Drawing number PE687-D141-126-015-000		Sheet Rev		



Rev	Date	Revision Description	Om	Pro	Ver	App

COPYRIGHT © ESB ENGINEERING & FACILITY MANAGEMENT LIMITED.
All rights reserved. No part of this work may be modified or reproduced or copied in any form or by any means - graphics, electronic or mechanical, including photocopying, recording, taping or information-and-retrieval system, or used for any purpose than its designated purpose, without the written permission of ESB Engineering & Facility Management Ltd.

ESB INTERNATIONAL

ESB International
18/21 Stephen Court, St. Stephen's Green, Dublin 2
Tel: 353 1 703 8000 Email: marketing@esbi.ie Web: www.esbi.ie
ESB International is a trading name of ESB Engineering & Facility Management Ltd
Registered Office: as above Registered in Ireland No. 155249

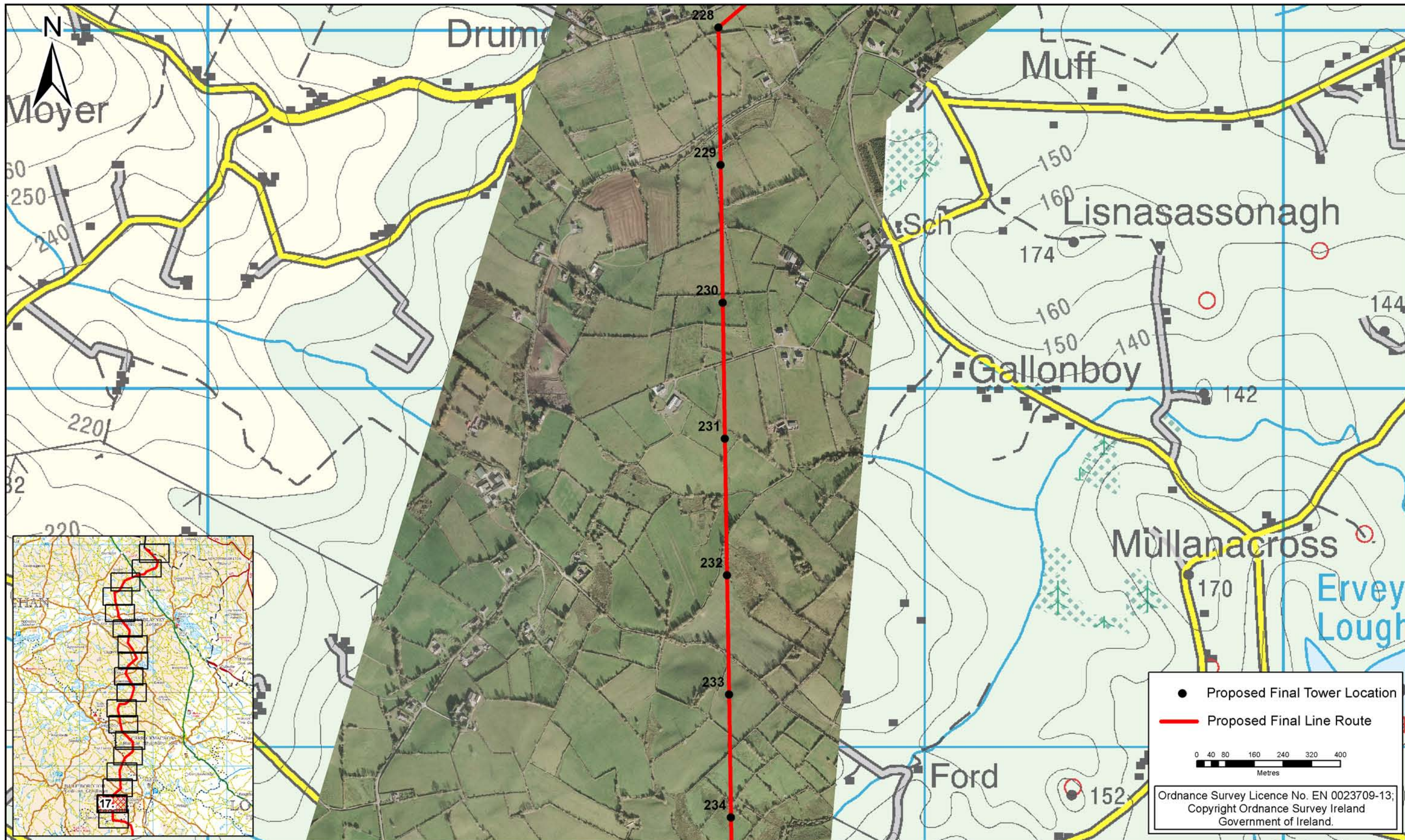
Client
EIRGRID

Project
North-South 400 kV
Interconnection Development

Drawing title
**Proposed Final Line Route
(CMSA)
Sheet 16 of 18**

Production unit
High Voltage Engineering

Drawn KS	Produced KS	Verified KC	Approved CM	Approved date Oct-13
Client ref.	No. of sheets 16 of 18	Size A3	Scale 1 : 10,000	
Drawing number PE687-D141-126-016-000		Sheet Rev		



Rev	Date	Revision Description	Om	Pro	Ver	App

COPYRIGHT © ESB ENGINEERING & FACILITY MANAGEMENT LIMITED.
All rights reserved. No part of this work may be modified or reproduced or copied in any form or by any means - graphics, electronic or mechanical, including photocopying, recording, taping or information-and-retrieval system, or used for any purpose than its designated purpose, without the written permission of ESB Engineering & Facility Management Ltd.

ESB INTERNATIONAL

ESB International
18/21 Stephen Court, St. Stephen's Green, Dublin 2
Tel: 353 1 703 8000 Email: marketing@esbi.ie Web: www.esbi.ie
ESB International is a trading name of ESB Engineering & Facility Management Ltd
Registered Office: as above Registered in Ireland No. 155249

Client
EIRGRID

Project
North-South 400 kV
Interconnection Development

Drawing title
**Proposed Final Line Route
(CMSA)
Sheet 17 of 18**

Production unit
High Voltage Engineering

Drawn KS	Produced KS	Verified KC	Approved CM	Approved date Oct-13
Client ref.	No. of sheets 17 of 18	Size A3	Scale 1 : 10,000	
Drawing number PE687-D141-126-017-000		Sheet Rev		



Rev	Date	Revision Description	Dr	Pro	Ver	App

COPYRIGHT © ESB ENGINEERING & FACILITY MANAGEMENT LIMITED.
 All rights reserved. No part of this work may be modified or reproduced or copied in any form or by any means - graphics, electronic or mechanical, including photocopying, recording, taping or information-and-retrieval system, or used for any purpose than its designated purpose, without the written permission of ESB Engineering & Facility Management Ltd.

ESB INTERNATIONAL

ESB International
 18/21 Stephen Court, St. Stephen's Green, Dublin 2
 Tel: 353 1 703 8000 Email: marketing@esbi.ie Web: www.esbi.ie
 ESB International is a trading name of ESB Engineering & Facility Management Ltd
 Registered Office: as above Registered in Ireland No. 155249

Client
EIRGRID

Project
 North-South 400 kV
 Interconnection Development

Drawing title
 Proposed Final Line Route
 (CMSA)
 Sheet 18 of 18

Production unit
 High Voltage Engineering

Drawn KS	Produced KS	Verified KC	Approved CM	Approved date Oct-13
Client ref.	No. of sheets 18 of 18	Size A3	Scale 1 : 10,000	
Drawing number PE687-D141-126-018-000		Sheet Rev		