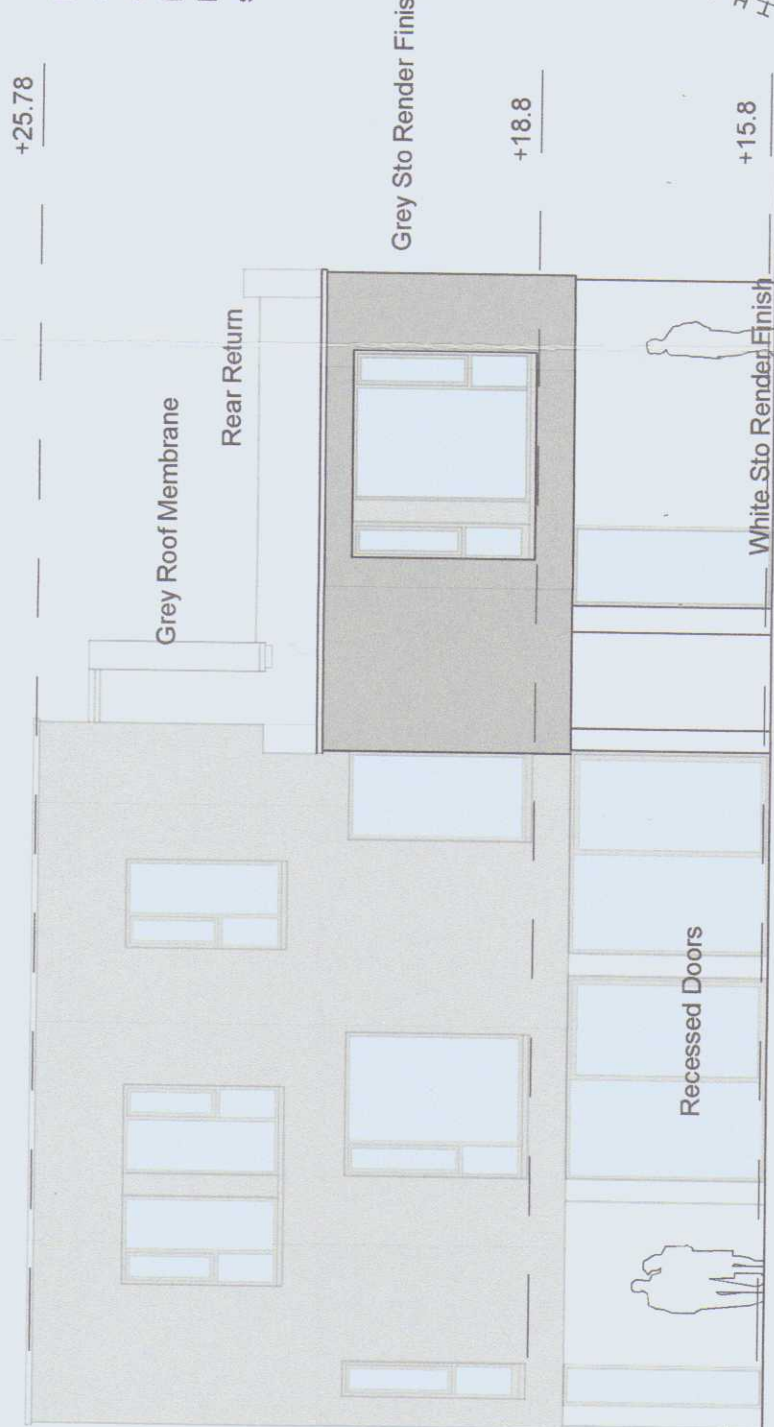
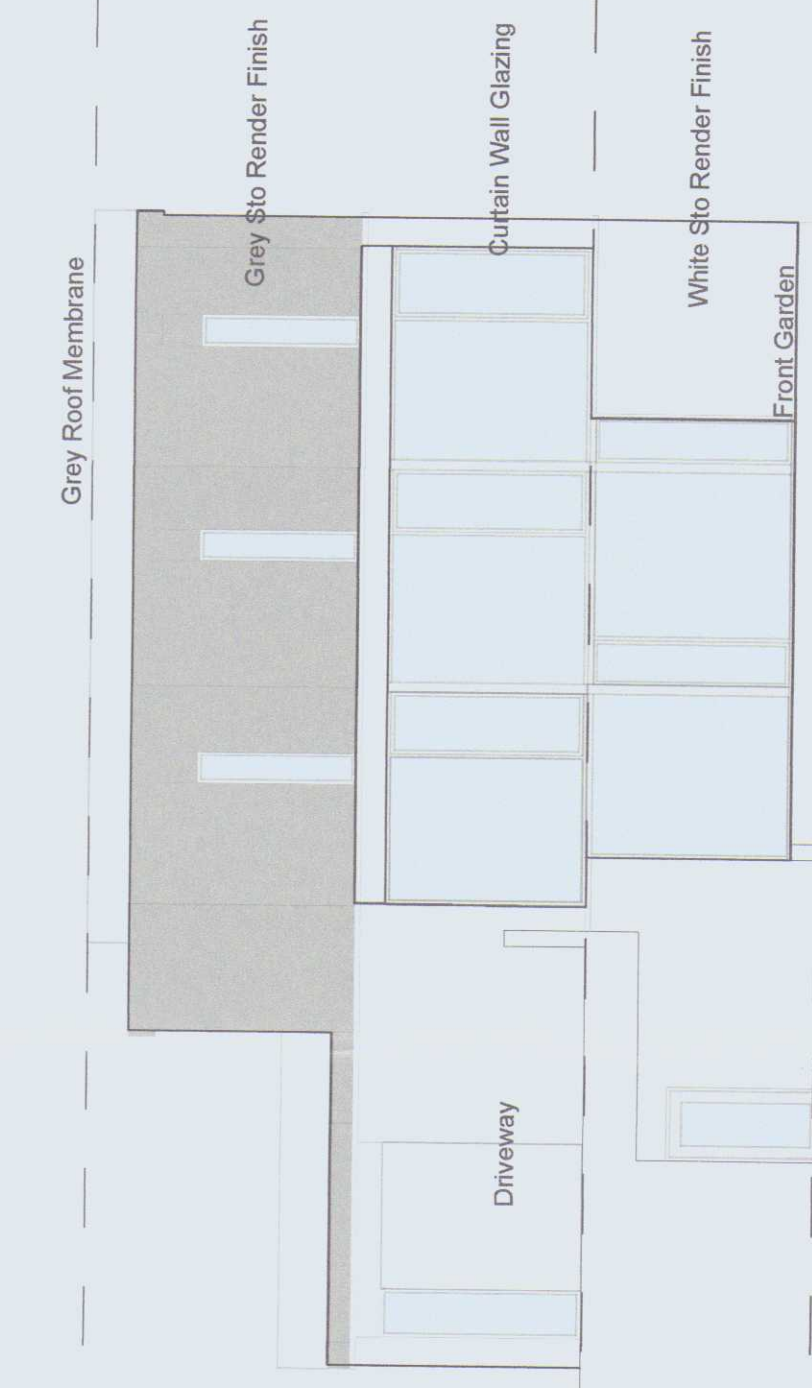


WEST Elevation - to Street - Per PP 13/94 and Per PP Con2&3
1:100
Conformance Drawing 2018 - Penetration and Materials.

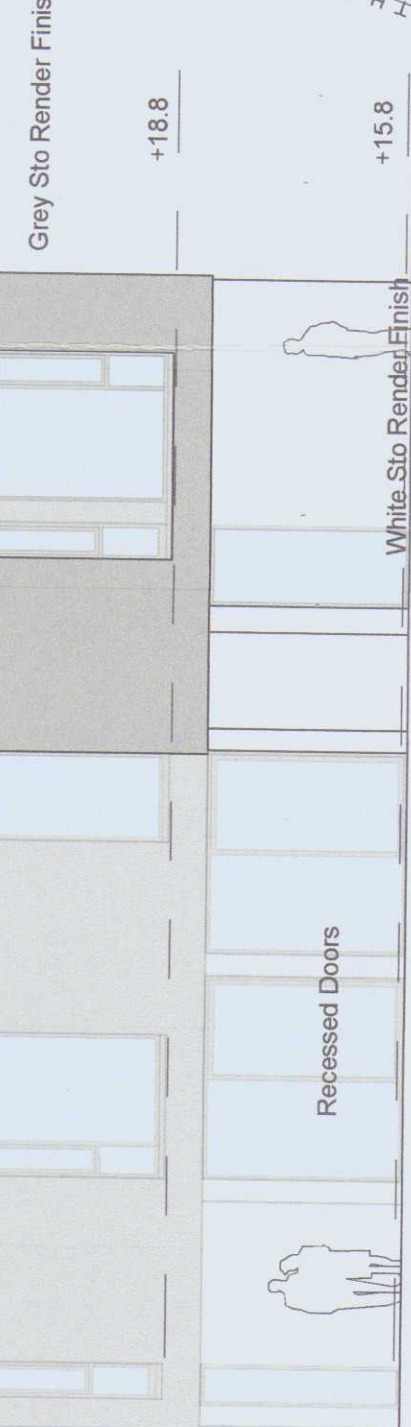


WEST Elevation - to Street - Declaration of Exemption 2021
1:100



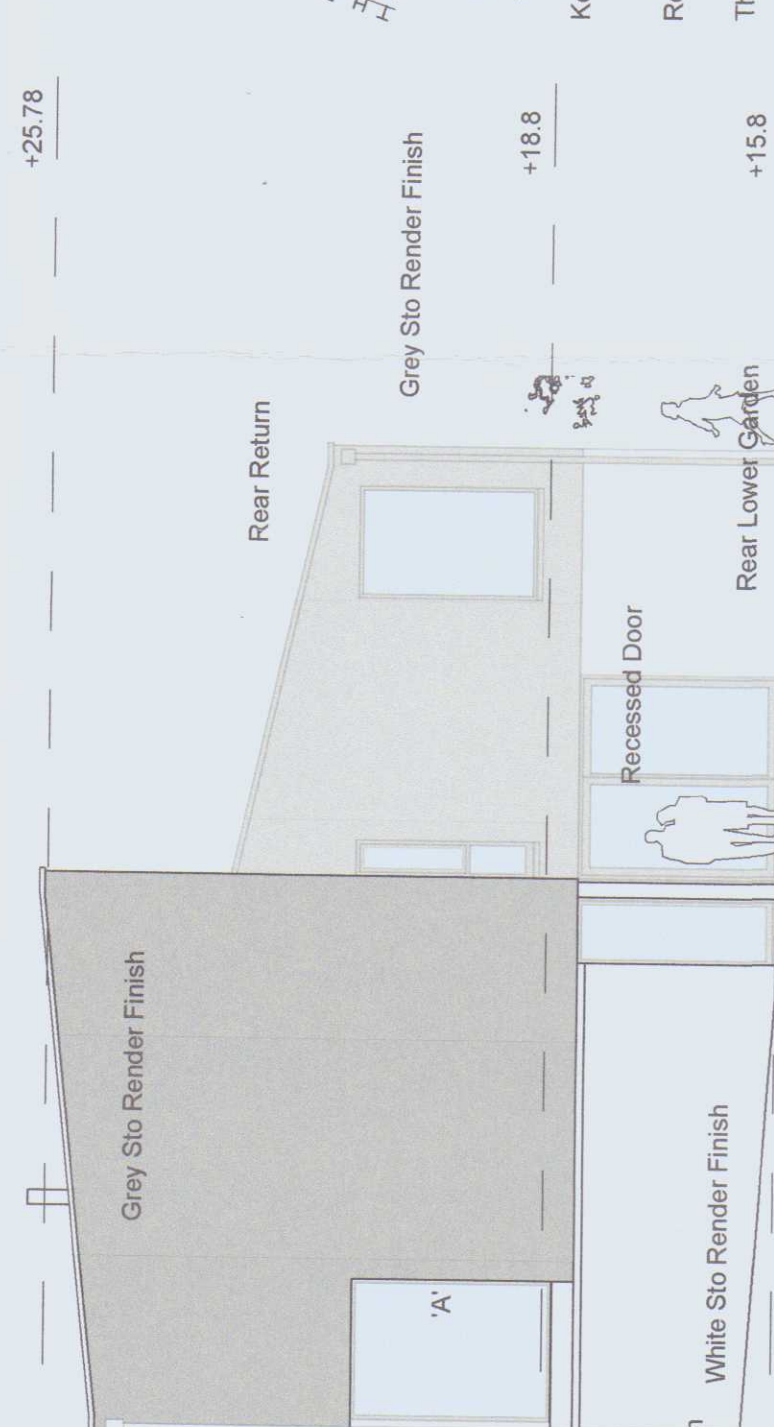
Key Plan West Elevation
1:500

Note on Elevations that the 2 x different tone solid grey hatch in the elevation drawing is intended to convey foreground and background parts of each elevation. E.g. in the East Elevation the RHS rear return of the building is in the foreground (dark grey) the LHS of the building is in the background (light grey). The building has 1 x only shade of grey sto-render colour in use that is used on upper floors.

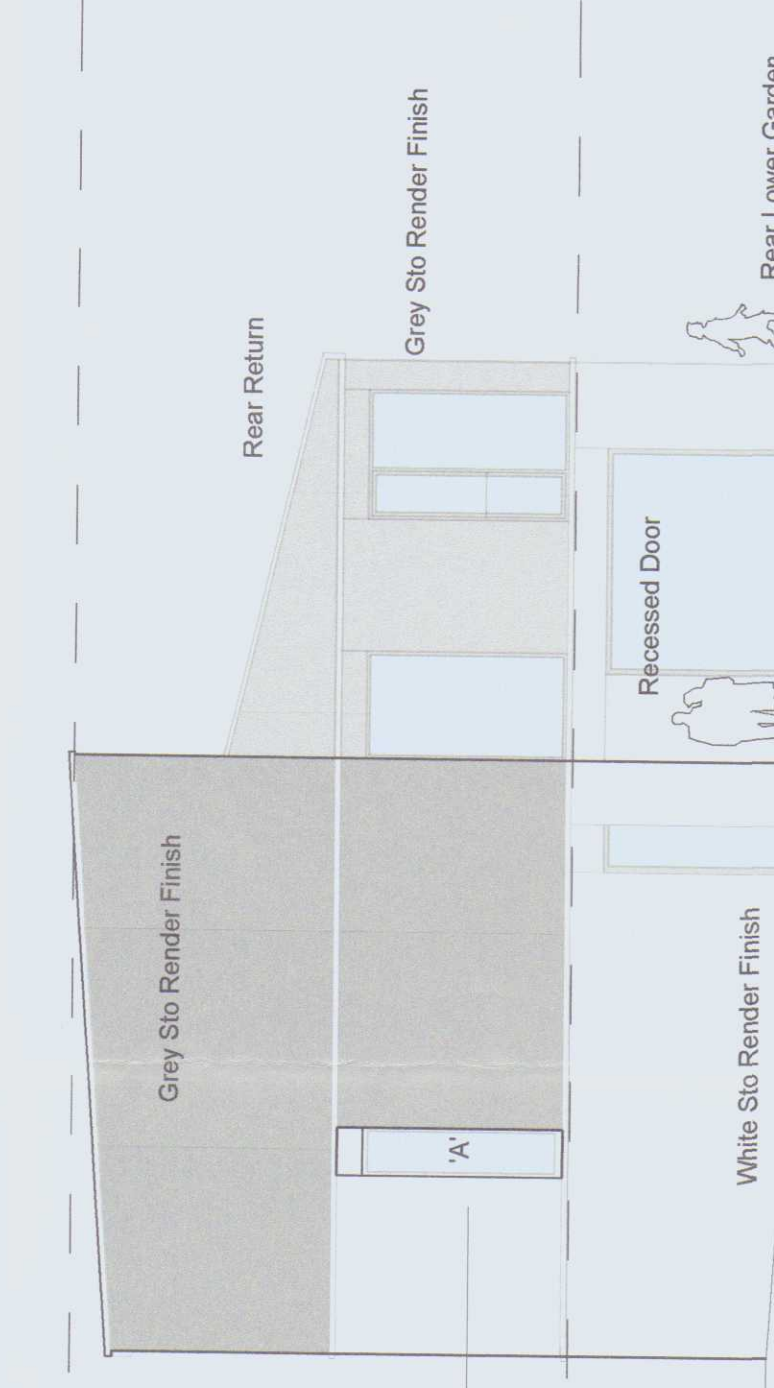


Key Plan East Elevation
1:500

East Elevation - Rear Garden - Declaration of Exemption 2021
1:100



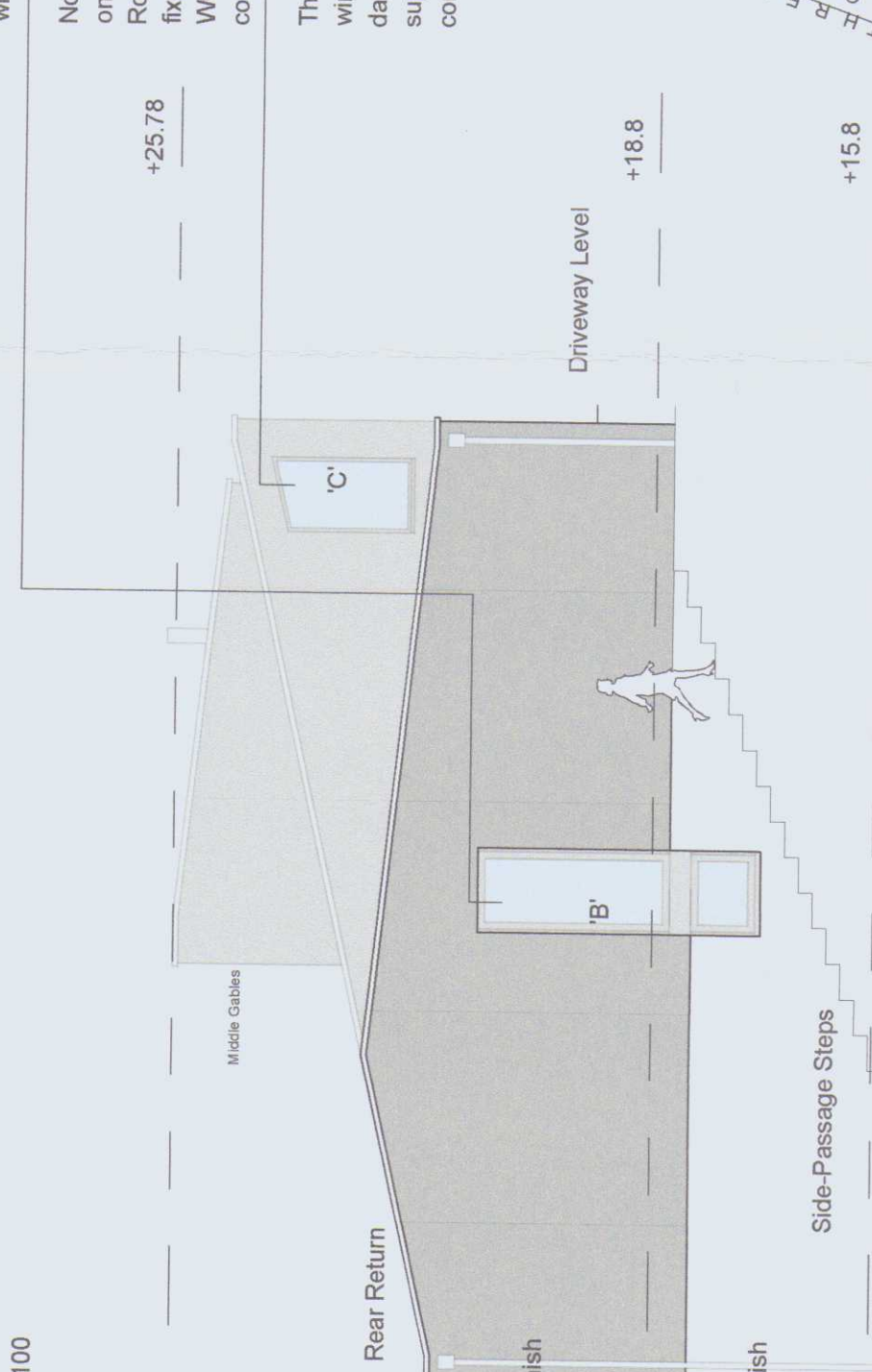
East Elevation - Rear Garden - Declaration of Exemption 2021
1:100



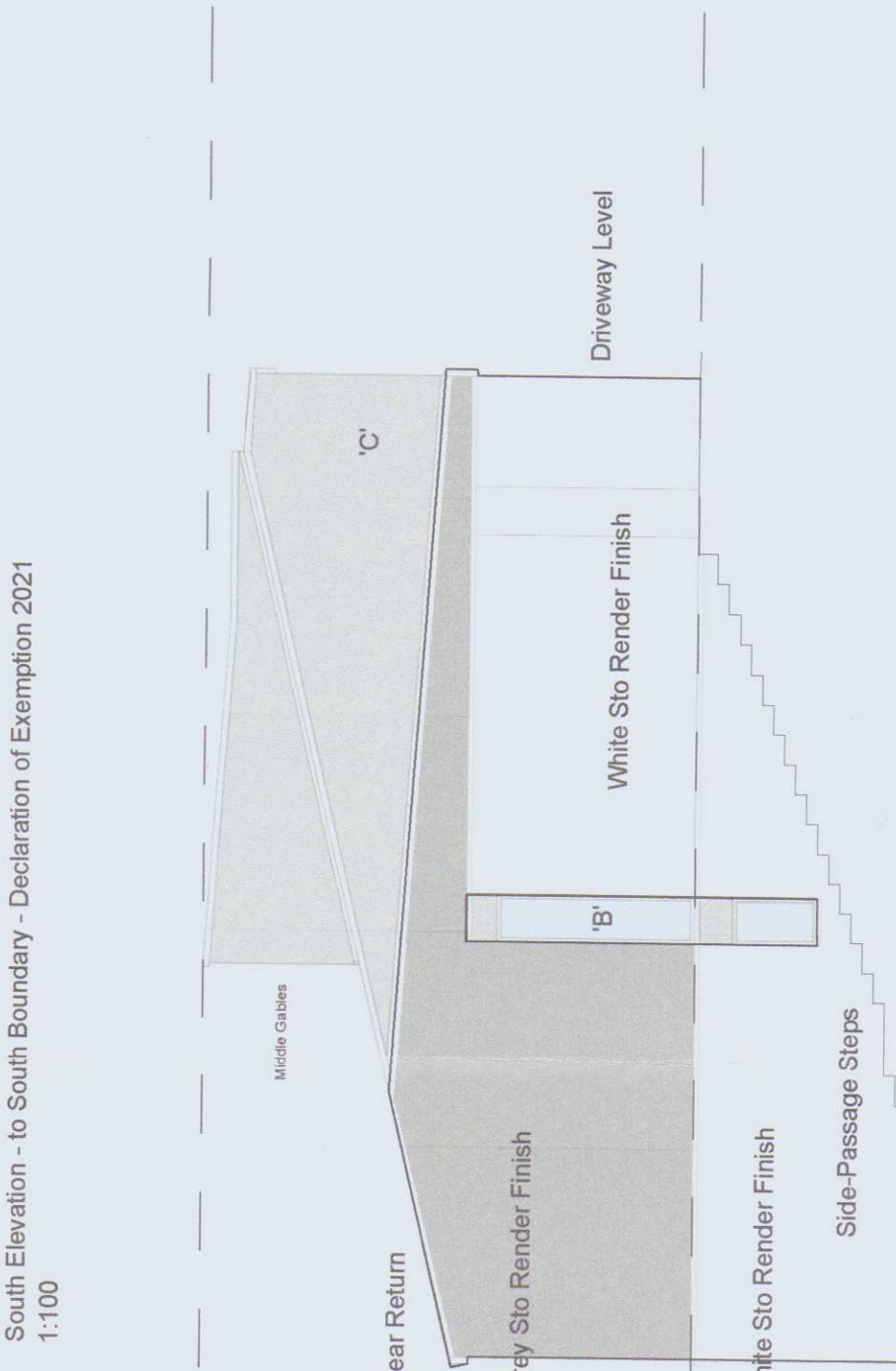
Key Plan South Elevation
1:500

Key: 'A', 'B', 'C'
Re the gable Elevations, please note as follows:
The window marked 'A' on the drawing DoE 03: This window is on the south elevation facing the adjacent boundary with 61 Threadneedle Road. This has been reduced in the horizontal width dimension only, and is a fixed pane, non-opening, opal glass (translucent but NOT transparent), WC window. The sill level here is adjusted consequent to ground conditions and rock levels on-site.
The window marked 'B' on the drawing DoE 03: This window is on the north elevation facing the adjacent boundary with 65 Threadneedle Road. This has been reduced in the horizontal width dimension only, and is a fixed pane, non-opening, opal glass (translucent but NOT transparent), WC's window. The sill level here is adjusted consequent to ground conditions and rock levels on-site.
The window marked 'C' is omitted on the north elevation (as 2 no. windows were added to the west elevation, these 2 x windows are daylighting the same circulation area internally, so rendering 'C' superfluous). The 2 x windows were added to comply with PP 13/94 condition 2. (see drawing PP Con 2+3 attached).

South (Gable) Elevation - South Boundary - Per PP 13/94
1:100



South Elevation - to South Boundary - Declaration of Exemption 2021
1:100



North Elevation - to North Boundary - Per PP 13/94
1:100

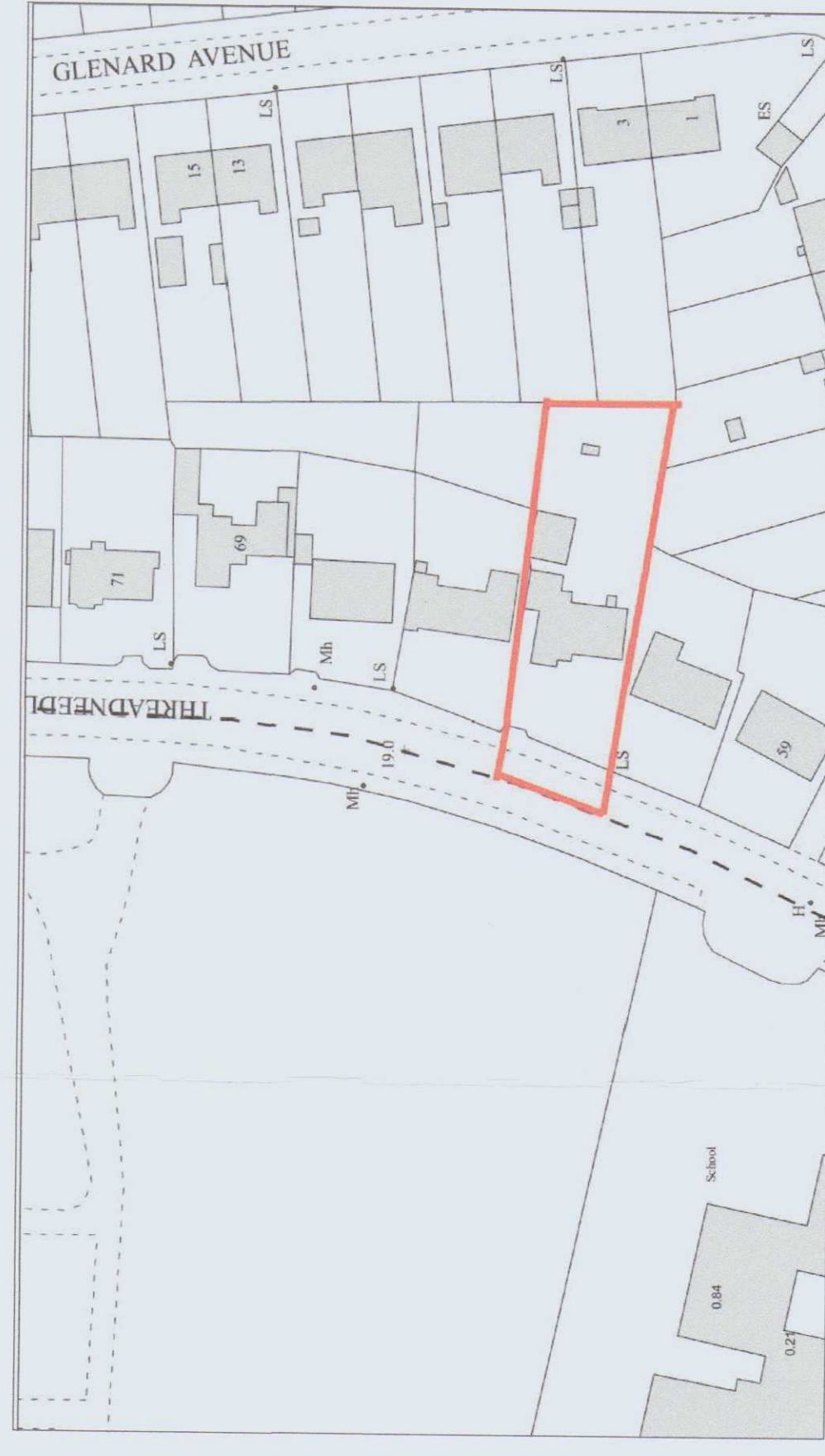
North Elevation - to North Boundary - Declaration of Exemption 2021
1:100



Roof Plan 1:100
1:100



Site Plan O.S. ref 3407-15
1:500



Site Plan O.S. ref 3407-15 (2013 OS Survey)
1:1000

NOTE: Views of the building with changes are to be proposed in the context of the surrounding area.

FEENEY MCMAHON ARCHITECTS
The Old School House, Tel: 087 4515616
Bishopsgate, www.fmcma.com
Limerick, office@fmcma.com

Job: Threadneedle road, Galway
Drawing: Elevations

Drawing No: DoE 03
Scale: Varies
Date: 24.11.2021

AN BORD PLEANALA
19 JAN 2022
UPDATED FROM Application
LDG: 3158302
APP: 3158302